

THIS DRAWING IS UNPUBLISHED.

RELEASED FOR PUBLICATION

20

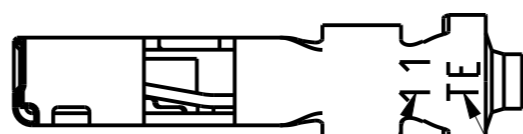
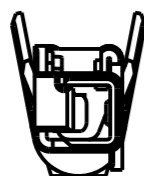
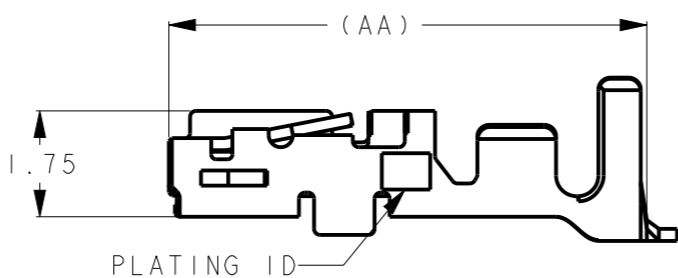
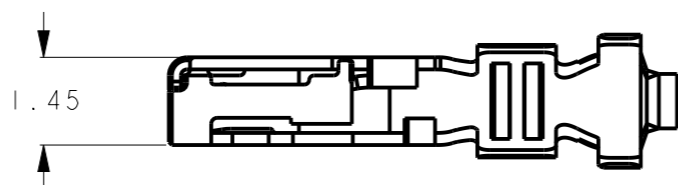
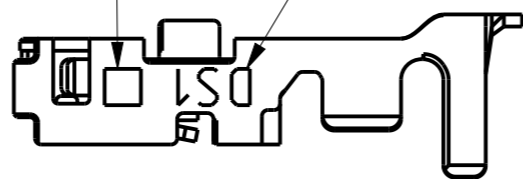
© COPYRIGHT 20 BY -

ALL RIGHTS RESERVED.

REVISIONS

| P | LTR | DESCRIPTION | DATE      | DWN | APVD |
|---|-----|-------------|-----------|-----|------|
|   | A   | RELEASED    | 23MAR2021 | Y.O | E.I  |
|   |     |             |           |     |      |
|   |     |             |           |     |      |

SIZE ID SERIES ID

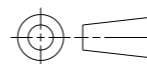


1. TECHNICAL CHARACTERISTICS:  
CONTACT MATERIAL: Cu ALLOY  
SURFACE PLATING:  
GOLD PLATING: 0.2µmMIN

| 7.9             | 0.1g          | M          | I             | 1.08-1.6        | AWG28-22, 0.08-0.37SQmm | M SIZE, GOLD 0.2µm | 2367818-2 |
|-----------------|---------------|------------|---------------|-----------------|-------------------------|--------------------|-----------|
| 7.9             | 0.1g          | S          | I             | 0.6-1.2         | AWG30-28, 0.05-0.1SQmm  | S SIZE, GOLD 0.2µm | 2367818-1 |
| DIMENSION<br>AA | NET<br>WEIGHT | SIZE<br>ID | PLATING<br>ID | INSUL.<br>RANGE | WIRE RANGE              | DESCRIPTION        | PART NO   |

THIS DRAWING IS A CONTROLLED DOCUMENT.

DIMENSIONS:  
mm



TOLERANCES UNLESS OTHERWISE SPECIFIED:

|        |      |
|--------|------|
| 0 PLC  | ±0.5 |
| 1 PLC  | ±0.5 |
| 2 PLC  | ±0.5 |
| 3 PLC  | ±0.5 |
| 4 PLC  | ±0.5 |
| ANGLES | ±3°  |

MATERIAL

FINISH

DWN 13APR2020

Y. OKADA

CHK 13APR2020

T. SHIMOYASU

APVD 13APR2020

F. IKEMATSU

PRODUCT SPEC

108-140257

APPLICATION SPEC

114-5377

WEIGHT

-

CUSTOMER DRAWING



TE Connectivity

NAME  
LOOSE PIECE, REC CONTACT,  
D1000 SLIM, DYNAMIC

SIZE CAGE CODE DRAWING NO RESTRICTED TO

A3 - C-2367818 -

SCALE 8:1 SHEET 1 OF 1 REV A