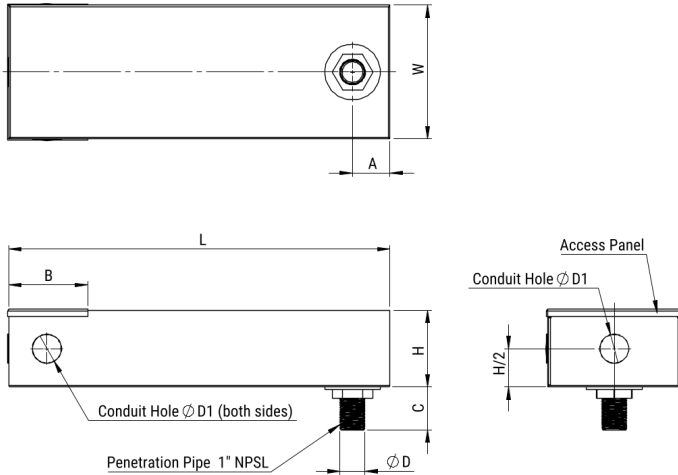


FLLE2030ASRW1

Aliases (LLE2030ASRW1)

KEMET, FLLE2-SR, EMI/RFI Filters, Noise Suppression, 480 VAC, 30 A, 510x180x105mm



Click [here](#) for the 3D model.

Dimensions

D	34mm MIN
L	510mm MIN
W	180mm MIN
H	105mm MIN
A	51.5mm
B	102mm

Packaging Specifications

Packaging	Bulk
Packaging Quantity	1

General Information

Series	FLLE2-SR
Style	Screen Room Filters
Description	Single Phase Power Line Filters for Shielded Rooms and Secure Areas
Phase	Single-phase
RoHS	Yes
Qualifications	UL 1283
Terminal Type	1" NPSL

Specifications

Voltage AC	480 VAC
Rated Current	30 A
Rated Temperature	40°C
Temperature Range	-25/+85°C
Climate Category	25/085/21
Leakage Current	2,290 mA
DC Resistance	14 mOhms
Capacitance	20 uF