

DO NOT SCALE DRAWING
DIMENSION IN METRIC

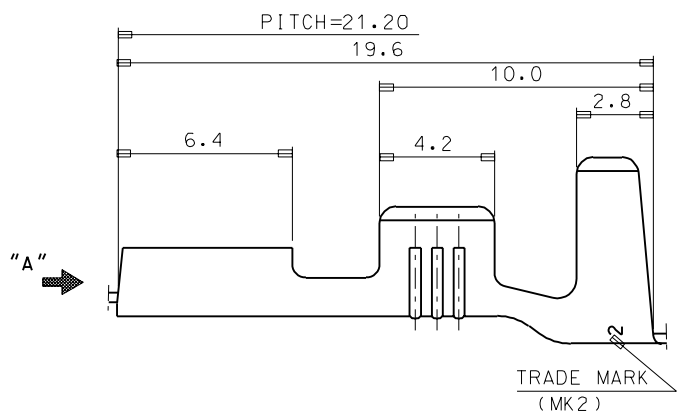
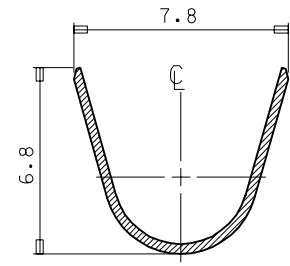
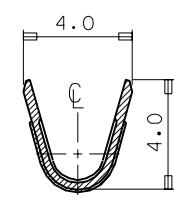
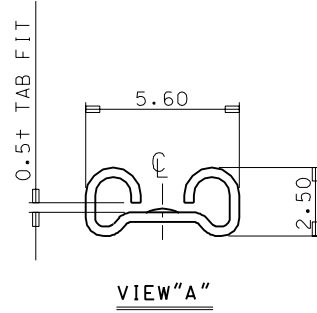
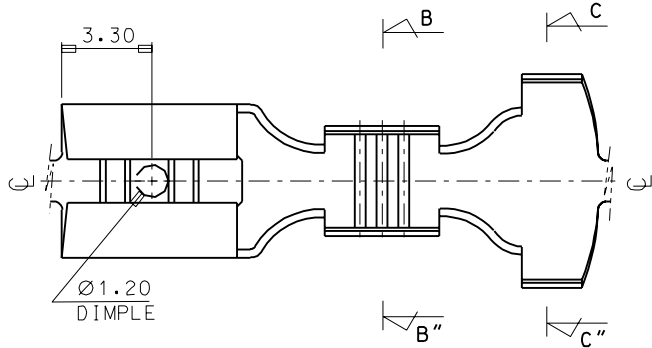
ENG. NO
SD 35718-15*0

EDP NO.

SIMILAR ITEM

PROJECT NO.

8
7
6
5
4
3
2
1



SECTION B-B''

SECTION C-C''

- NOTES
1. MATERIAL: BRASS , 0.35THICKNESS
 2. FINISH: 35718-1500: UNPLATED
35718-1510: POST-TIN PLATED
 3. RECOMMENDED LENGTH OF WIRE STRIP IS 6.2-6.7

ASS'Y PART		QTY/REEL OR PACK	SURFACE AREA	MATERIAL	SEE NOTES	WIRE RANGE	GENERAL TOLERANCES	molex MOLEX-KOREA CO.,LTD.
DESCRIPTION	ENG.NO.	4,000 0'ty / reel	MM ²	DIMENSION CLASSIFICATION		AWG: #14	DIM. : ±0.30	
		DIE NO.	LAYOUT NO.	<input checked="" type="checkbox"/> : CRITICAL <input checked="" type="checkbox"/> : MAJOR <input type="checkbox"/> : MINOR () : REFERENCE		MM ² : -#10	ANGLE : ±0.20	REVISE ONLY ON CAD SYSTEM
		WIRE CRIMP WIDTH	INS. CRIMP WIDTH	DRAWN BY	CHK'D BY	INSULATION RANGE	TITLE: .187 SLIP-ON RECEPTACLE(L)	1 of 1
A	CAD REDRAWING	93-011	93.5.24	W.Y. YANG	B.K. CHOI	∅ 4.4-5.3	ENG.NO.	SD 35718-15*0
LTR	REVISION RECORD	ECN	DR/CHK	DATE	DIE FEED	APPL FEED	WBDW	IBDW
					APP'D BY	SCALE		6:1