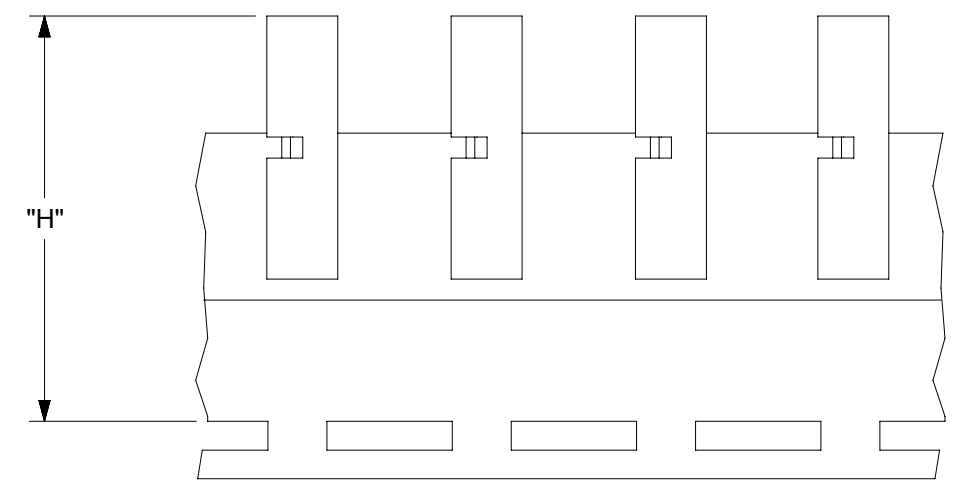
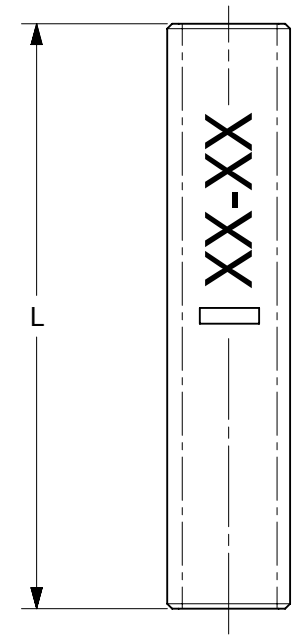
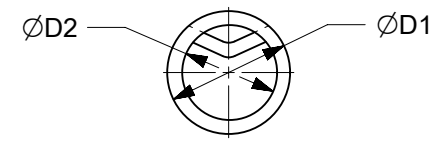


MATERIAL NO.	ENGINEERING NO.	D1 MAX	D2 MAX	L MAX	H NOMINAL	WIRE RANGE AWG	DESCRIPTION
192030384	19203-0384	.14/3.6	.05/1.2	.627/15.92	-----	22-18	LOOSE
192030385	19203-0385	.17/4.3	.07/1.9	.627/15.92	-----	16-14	LOOSE
192030386	C-S-146 (P)	.23/5.8	.12/3.0	.627/15.92	-----	12-10	LOOSE
192030523	19203-0523	.14/3.6	.05/1.2	.627/15.92	1.218/30.94	22-18	TAPE
192030479	19203-0479	.17/4.3	.07/1.9	.627/15.92	1.218/30.94	16-14	TAPE
192030480	19203-0480	.23/5.8	.12/3.0	.627/15.92	1.218/30.94	12-10	TAPE

(A2)



PARTS ON TAPE

- NOTES:
- MATERIAL: STEEL .031/0.80 THICK REF.
 - FINISH: NICKEL PLATED WITH OPTIONAL COPPER FLASH UNDERPLATING, IS ALLOWED FOR IMPROVED ADHESION.
 - PART IS ROHS COMPLIANT.

(A2)

FUNCTIONAL SYMBOLS	THIS DRAWING CONTAINS INFORMATION THAT IS PROPRIETARY TO MOLEX ELECTRONIC TECHNOLOGIES, LLC AND SHOULD NOT BE USED WITHOUT WRITTEN PERMISSION					
	DIMENSION UNITS		SCALE		CURRENT REV DESC: REMASTERED IN ECTR AND UPDATED NOTE	
	IN/MM		1:1			
	GENERAL TOLERANCES (UNLESS SPECIFIED)					
DIVISIONAL SYMBOLS	4 PLACES ±		MM		INCH	
	3 PLACES ±					
	2 PLACES ±					
	1 PLACE ±					
	0 PLACES ±					
ANGULAR TOL ± °						
DRAFT WHERE APPLICABLE MUST REMAIN WITHIN DIMENSIONS		THIRD ANGLE PROJECTION		DRAWING		
		B-SIZE		SERIES		
		19203		MATERIAL NUMBER		
		SEE CHART		CUSTOMER		
		GENERAL MARKET		SHEET NUMBER		
		1 OF 1				

molex

STEP DOWN BUTT SPLICE SEAMLESS

PRODUCT CUSTOMER DRAWING

DOCUMENT NUMBER: SD-19203-015
 DOC TYPE: PSD
 DOC PART: 001
 REVISION: A2