

ITEM	PART#	DESCRIPTION	QTY	UOM
A	510210500	PicoBlade1.25 Rec Hsg 5P	1	PC
B	500588000	PicoBlade1.25 Crimp Rec Term Chain Tin	5	PC
C	--	Blank label 12.7x35.5mm (WHT:12.7mm) HF	1	PC
D	510470500	PicoBlade1.25 Plug Hsg 5P	1	PC
E	501338000	PicoBlade1.25 Crimp Plug Term Chain	5	PC

FROM	TO	DESCRIPTION	COLOR
A1	D5	CABLE 28 AWG UL 1061 BLACK	BLACK
A2	D4	CABLE 28 AWG UL 1061 BLACK	BLACK
A3	D3	CABLE 28 AWG UL 1061 BLACK	BLACK
A4	D2	CABLE 28 AWG UL 1061 BLACK	BLACK
A5	D1	CABLE 28 AWG UL 1061 BLACK	BLACK

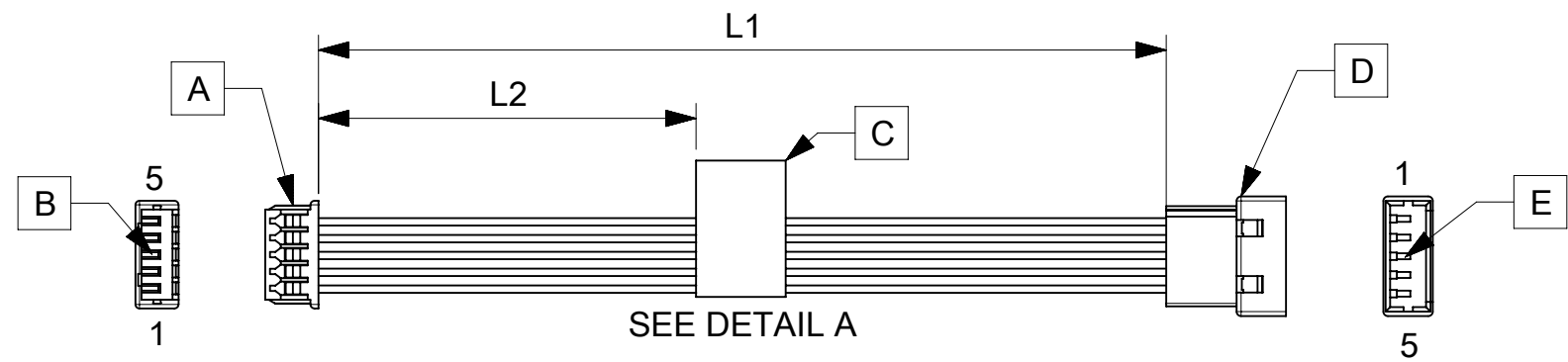
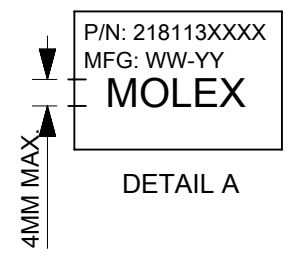


TABLE			
PART NUMBER	L1	L2 (REF)	TITLE
2181130500	75±5	30	5 CIRCUIT PICOBLADE R:P CABLE 75MM
2181130501	150±6	70	5 CIRCUIT PICOBLADE R:P CABLE 150MM
2181130502	225±6	105	5 CIRCUIT PICOBLADE R:P CABLE 225MM
2181130503	300±8	145	5 CIRCUIT PICOBLADE R:P CABLE 300MM
2181130504	425±8	205	5 CIRCUIT PICOBLADE R:P CABLE 425MM



- NOTES
1. Cable assembly to be tested 100% for continuity and polarity.
 2. Connector view shown is from mating side.
 3. Label text must be 2mm max. in height with Arial font.
 4. Label must be wrapped in flag type on the cables.

FUNCTIONAL SYMBOLS $\frac{E}{A} = 0$ $\frac{E}{E} = 0$ $\frac{E}{P} = 0$ DIVISIONAL SYMBOLS	THIS DRAWING CONTAINS INFORMATION THAT IS PROPRIETARY TO MOLEX ELECTRONIC TECHNOLOGIES, LLC AND SHOULD NOT BE USED WITHOUT WRITTEN PERMISSION		CURRENT REV DESC:				
	DIMENSION UNITS	SCALE	GENERAL TOLERANCES (UNLESS SPECIFIED)				
	mm	NTS	ANGULAR TOL ± °				
	4 PLACES ±		3 PLACES ±				
3 PLACES ±		2 PLACES ±		EC NO: 659320	PRODUCT CUSTOMER DRAWING DOCUMENT NUMBER: 2181130500 DOC TYPE: PSD DOC PART: 000 REVISION: A		
2 PLACES ±		1 PLACE ±		DRWN: ARAJU 2021/03/04			
1 PLACE ±		0 PLACES ±		CHK'D: RDESAI01 2021/03/26			
DRAFT WHERE APPLICABLE MUST REMAIN WITHIN DIMENSIONS		THIRD ANGLE PROJECTION	DRAWING	SERIES	MATERIAL NUMBER	CUSTOMER	SHEET NUMBER
			A4-SIZE	218113	SEE TABLE	GENERAL MARKET	1 OF 1

REVISION			
DATE	REV	DESCRIPTION	CHANGER
04/03/2021	A	INITIAL RELEASE	ARAJU

DOCUMENT STATUS	P1	RELEASE DATE	2021/03/26	04:03:47
-----------------	----	--------------	------------	----------