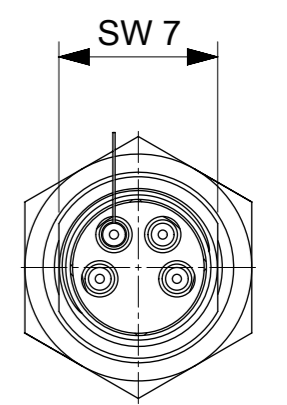
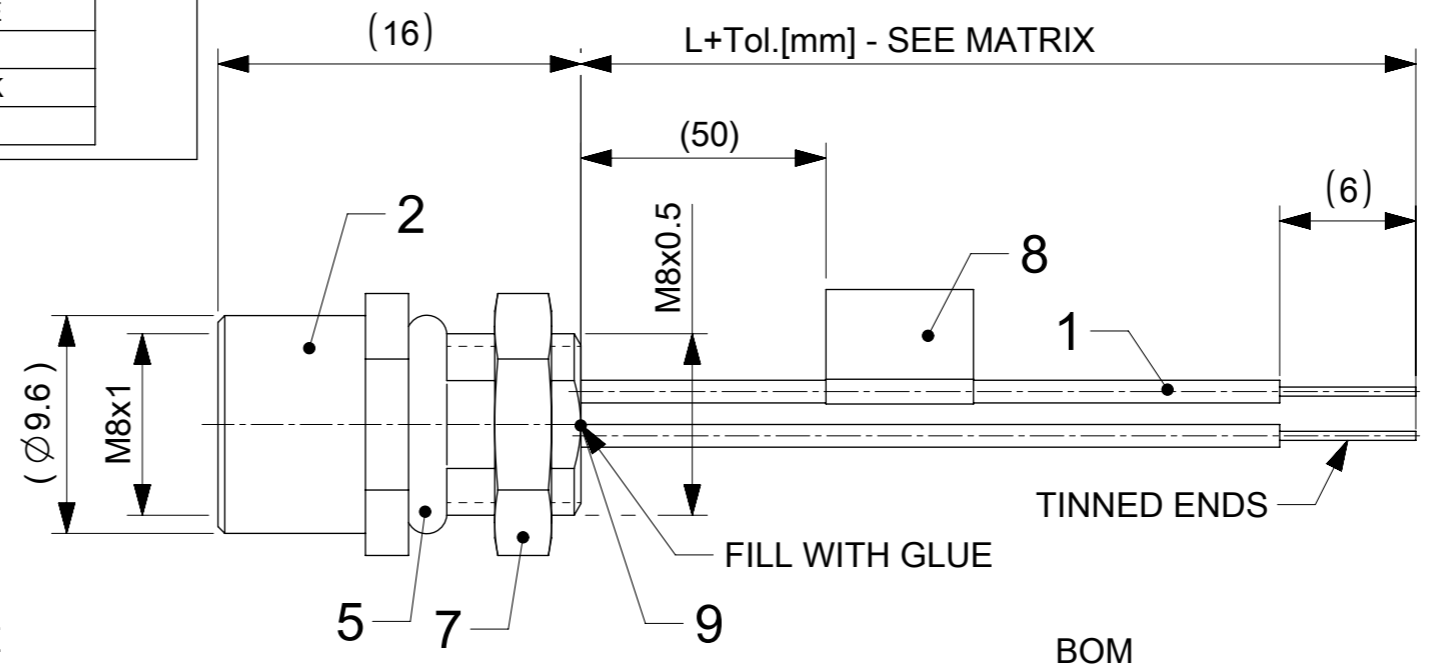
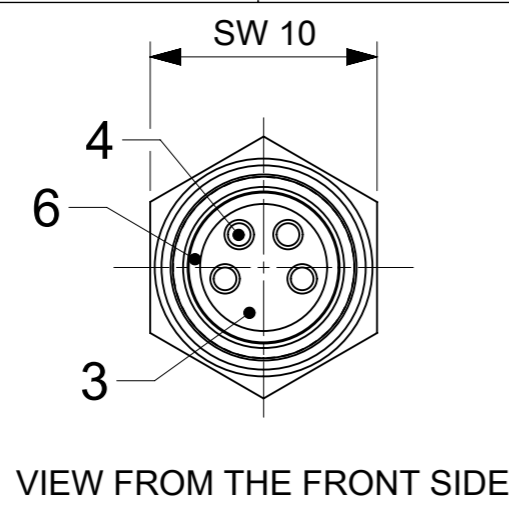


PART No. MATRIX

4 R X F 3 0 E 0 2 X X X X X

- 4R = M8 REC
- Poles: 4 = 4 Poles, 5 = 5 Poles, 8 = 8 Poles
- Shell Type
- Wires E02 = 0.25mm² PVC
- Units: M = Meters, C = Centimeters
- Length Examples: 005 = 0.5 unit, 010 = 1 unit, 100 = 10 units
- Shell material: Blank = Aluminum, 1 = stainless steel, 3 = brass with nickel plated



M8 3-4-5P A-B Code:
 ELECTRICAL DATA:
 3P VOLTAGE RATING: 60V
 4-5P VOLTAGE RATING: 30V
 AMPERAGE RATING: 3A
 INSULATION RESISTANCE: 10⁸ Ω MIN.
 MATING CYCLES: MIN. 100

ENVIRONMENTAL:
 PROTECTION: IP65 in mated and locked position.
 OPERATING TEMPERATURE: -25°C TO +85°C

PART LIST

MOLEX PN	ENGINEERING NO.	LENGTH (MM)
1200905071	4R3F30E02C200	2000
1200310015	4R3F30E02C3003	3000
1200310053	4R3F30E02M0203	2000
1200905076	4R4F30E02C200	2000
1200908035	4R4F30E02C2103	2100
1200908011	4R4F30E02C300	3000
1200310049	4R4F30E02C3003	3000
1200905106	4R5F30E02C200	2000
1200310028	4R5F30E02C3003	3000

RECOMMENDED PANEL CUT OUT

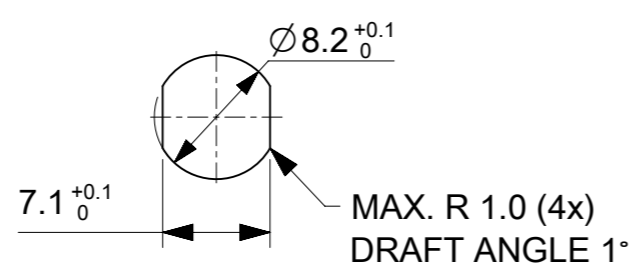
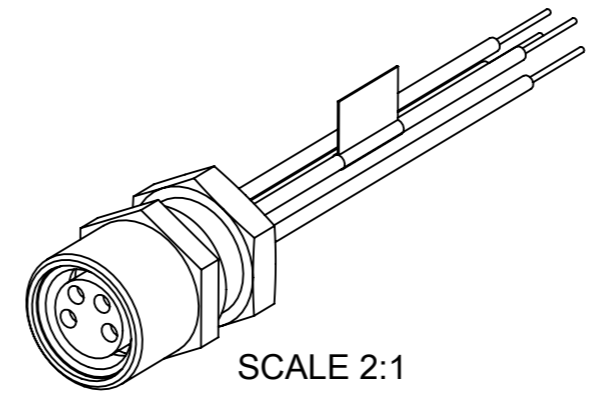


Table of length tolerances [mm]

Over	Up to and including	Tolerance
0	305	+19
305	915	+45
915	1830	+56
1830	3660	+89
3660	7320	+165
7320	14640	+317
14640	30500	+610
30500	>	+2% of length

BOM

ITEM	QTY	DESCRIPTION	MATERIAL	FINISH/COLOR
9	-	POTTING MATERIAL	WEVO	-
8	1	LABEL	VINYL	YELLOW
7	1	LOCKNUT M8X0.5	BRASS	NICKEL PLATED
6	1	GASKET	FKM	RED
5	1	O-RING	NBR	BLACK
4	3/4/5	CONTACT 10 FE	BRONZE	GOLD OVER NICKEL PLATED
3	1	INSERT M8 FE 5P	ELASTOLLAN	BLACK
2	1	REC SHELL M8(FE)XM8(M)	BRASS	NICKEL PLATED
1	-	WIRE;24AWG;OD=1.43mm	PVC	GRAY
	-	WIRE;24AWG;OD=1.43mm		BROWN
	-	WIRE;24AWG;OD=1.43mm		WHITE
	-	WIRE;24AWG;OD=1.43mm		BLUE
	-	WIRE;24AWG;OD=1.43mm		BLACK



THIS DRAWING CONTAINS INFORMATION THAT IS PROPRIETARY TO MOLEX ELECTRONIC TECHNOLOGIES, LLC AND SHOULD NOT BE USED WITHOUT WRITTEN PERMISSION

FUNCTIONAL SYMBOLS: $\sqrt{A} = 0$, $\sqrt{E} = 0$, $\sqrt{F} = 0$

DIVISIONAL SYMBOLS: $\sqrt{A} = 0$, $\sqrt{E} = 0$, $\sqrt{F} = 0$

THIS DRAWING CONTAINS INFORMATION THAT IS PROPRIETARY TO MOLEX ELECTRONIC TECHNOLOGIES, LLC AND SHOULD NOT BE USED WITHOUT WRITTEN PERMISSION

CURRENT REV DESC: MIGRATED AND REVISED

EC NO: 702547
 DRWN: MDHARMANTI 2022/04/05
 CHK'D: RSILLER 2022/04/08
 APPR: RSILLER 2022/04/08

INITIAL REVISION:
 DRWN: MDHARMANTI 2022/04/05
 APPR: RSILLER 2022/04/08

THIRD ANGLE PROJECTION

DRAWING: A3-SIZE
 SERIES: 120090
 MATERIAL NUMBER: SEE PART LIST
 CUSTOMER: GENERAL MARKET
 SHEET NUMBER: 1 OF 1

molex

REC M8 5P BC FE STR PVC M8 FM WIR UNSH

PRODUCT CUSTOMER DRAWING

DOCUMENT NUMBER: 1200905076
 DOC TYPE: PSD
 DOC PART: 000
 REVISION: A

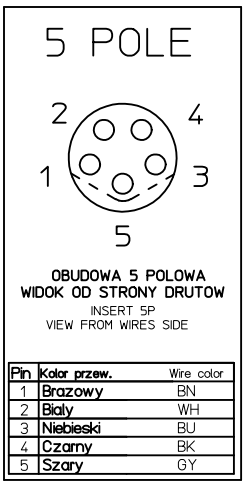
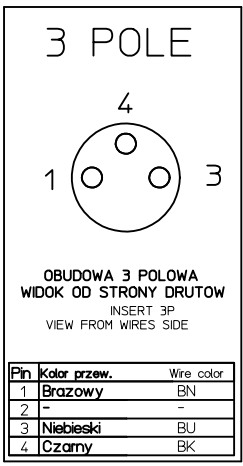


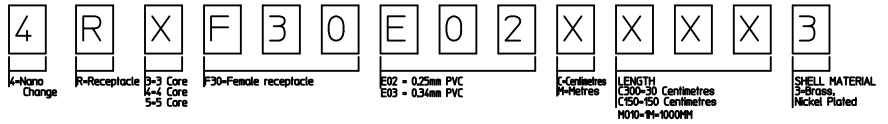
TABELA 1
CHART 1

MOLEX PN	WOODHEAD PN	L(mm)	TYP
1200310015	4R3F30E02C3003	300	3 POLOWY
1200310053	4R3F30E02M0203	2000	3 POLOWY
1200310034	4R4F30E02C2003	200	4 POLOWY
1200310049	4R4F30E02C3003	300	4 POLOWY
1200310058	4R4F30E02M0103	1000	4 POLOWY
1200310028	4R5F30E02C3003	300	5 POLOWY
1200310111	4R4F30E02M010	1000	4 POLOWY
1200905002	4R4F30E03M0203	2000	4 POLOWY
1200908011	4R4F30E02C300	300	4 POLOWY

Tablica tolerancji dlugosci
Table of length tolerances

Powyzej Over	Do-wlacznice Up to and including	Tolerancja (+) Tolerance
0	305	+19
305	915	+45
915	1830	+56
1830	3660	+89
3660	7320	+165
7320	14640	+317
14640	30500	+610
30500	>	+2% dlugosci of length

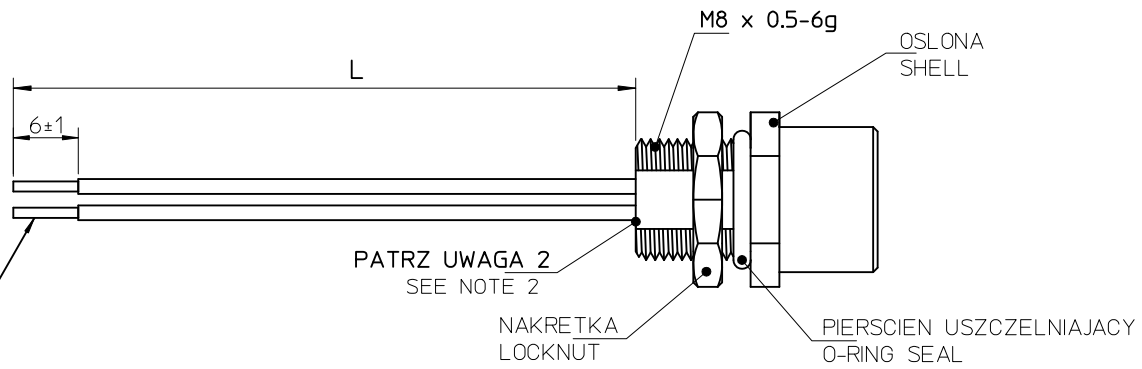
PART No MATRIX



WIDOK OD STRONY CZOLA
FACE VIEW



CYNOWAC
TINNED



- UWAGI:
- DLUGOSC CIECIA I SPECYFIKACJE NABIJANIA WEDLUG LISTY CIECIA.
 - PO OSADZENIU TERMINALI ZALAC KLEJEM.

- NOTES:
- FOR CUTTING LENGTH AND CRIMPING SPECIFICATION SEE CUTTING LIST.
 - AFTER ASSEMBLED TERMINALS THE CONNECTOR MUST BE FLOOD BY GLUE.

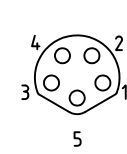
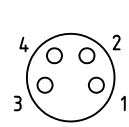
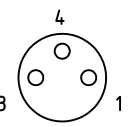
ORIGINAL RELEASE EC NO: WEU2009-0439 DRWN: MWOLSZCZAK 2009/06/04 CHKD: APPR: MDYSZEWSKA 2011/12/08	QUALITY SYMBOLS	GENERAL TOLERANCES (UNLESS SPECIFIED)		DIMENSION STYLE MM ONLY		SCALE ---	DESIGN UNITS METRIC	FIRST ANGLE PROJECTION		
	▽=0 ∇=0	mm	INCH	DRAWN BY MWOLSZCZAK	DATE 2008/05/10	TITLE NC-XP-FE-REC -XXXM-M8-THD.				
		4 PLACES ± --- ± ---	3 PLACES ± --- ± ---	2 PLACES ± --- ± ---	CHECKED BY MDABROWSKA	DATE 2008/05/10	APPROVED BY MDYSZEWSKA 2011/12/08			
		1 PLACE ± --- ± ---	ANGULAR ± ---°		MATERIAL NO. SEE DRAWING		DOCUMENT NO. 4RXF30XXXXXXX3		SHEET NO. 1 OF 1	
	DRAFT WHERE APPLICABLE MUST REMAIN WITHIN DIMENSIONS		THIS DRAWING CONTAINS INFORMATION THAT IS PROPRIETARY TO MOLEX INCORPORATED AND SHOULD NOT BE USED WITHOUT WRITTEN PERMISSION							

FEMALE FACE VIEW

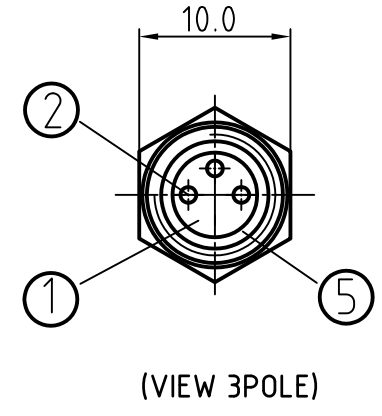
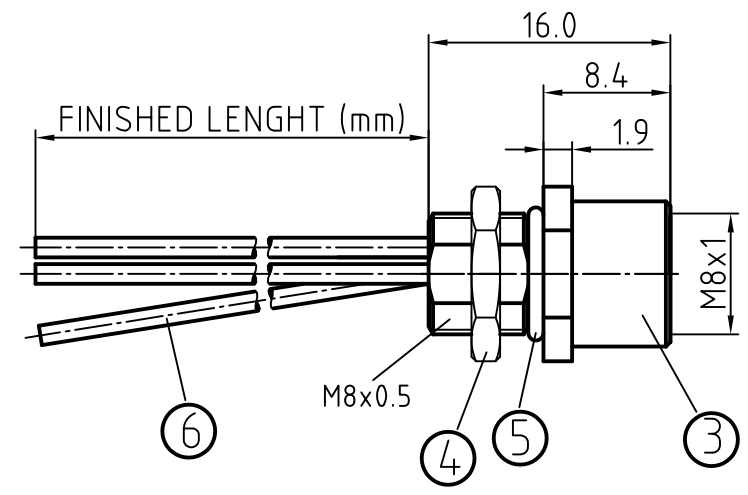
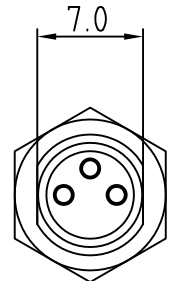
3 POLE

4 POLE

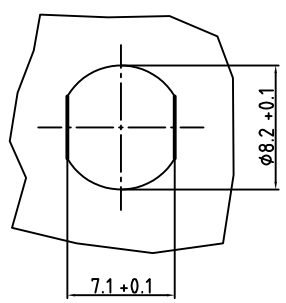
5 POLE



Pin No.	Wire	Pin No.	Wire	Pin No.	Wire
1	Brown	1	Brown	1	Brown
2	-	2	White	2	White
3	Blue	3	Blue	3	Blue
4	Black	4	Black	4	Black
				5	Grey



PANEL CUT OUT



POLE	MATERIAL NUMBER	ENGINEERING NUMBER	FINISHED LENGHT (MM)
3	1200310015	4R3F30E02C3003	300±25
4	1200310034	4R4F30E02C2003	200±25
5	1200310028	4R5F30E02C3003	300±25

CONNECTOR SPECIFICATION:	
VOLTAGE RATING	3-4POL:60V/AC 75V/DC 5POL:30V/AC 36V/DC
AMPERAGE RATING	3 AMPS
PROTECTION	IP67
OPERATING TEMPERATURE	-25°C TO +90°C

ITEM	COMPONENT	MATERIAL	FINISH
1	INSERT	POLYURETHANE (PUR)	BLACK
2	CONTACT SOCKET	COPPER ALLOY	GOLD OVER NICKEL
3	SHELL	BRASS	NICKEL PLATED
4	LOCKNUT	BRASS	NICKEL PLATED
5	O-RING	VITON	
6	COPPER STRANDING AWG24/0.25mm ²	JACKET: PVC	

DESCRIPTION EC NO: WEU2010-0338 DRWN: REISSNER 2010/02/18 CHKD: RE APPR: FPACHER 2010/02/24	QUALITY SYMBOLS	GENERAL TOLERANCES (UNLESS SPECIFIED) mm INCH 4 PLACES ±--- ±--- 3 PLACES ±--- ±--- 2 PLACES ±--- ±--- 1 PLACE ±0.1 ±--- ANGULAR ± --- °	DIMENSION STYLE	SCALE	DESIGN UNITS	THIRD ANGLE PROJECTION	
			MM ONLY	2:1	METRIC		
			DRAWN BY DATE REISSNER 2010/02/18 CHECKED BY DATE FP 2010/02/18 APPROVED BY DATE FPACHER 2010/02/19				
			MATERIAL NO. DOCUMENT NO. SHEET NO. SEE TABLE SD-120090-028 1 OF 1				
1	REV	DRAFT WHERE APPLICABLE MUST REMAIN WITHIN DIMENSIONS	SIZE	THIS DRAWING CONTAINS INFORMATION THAT IS PROPRIETARY TO MOLEX INCORPORATED AND SHOULD NOT BE USED WITHOUT WRITTEN PERMISSION			
			A3				