

4

3

2

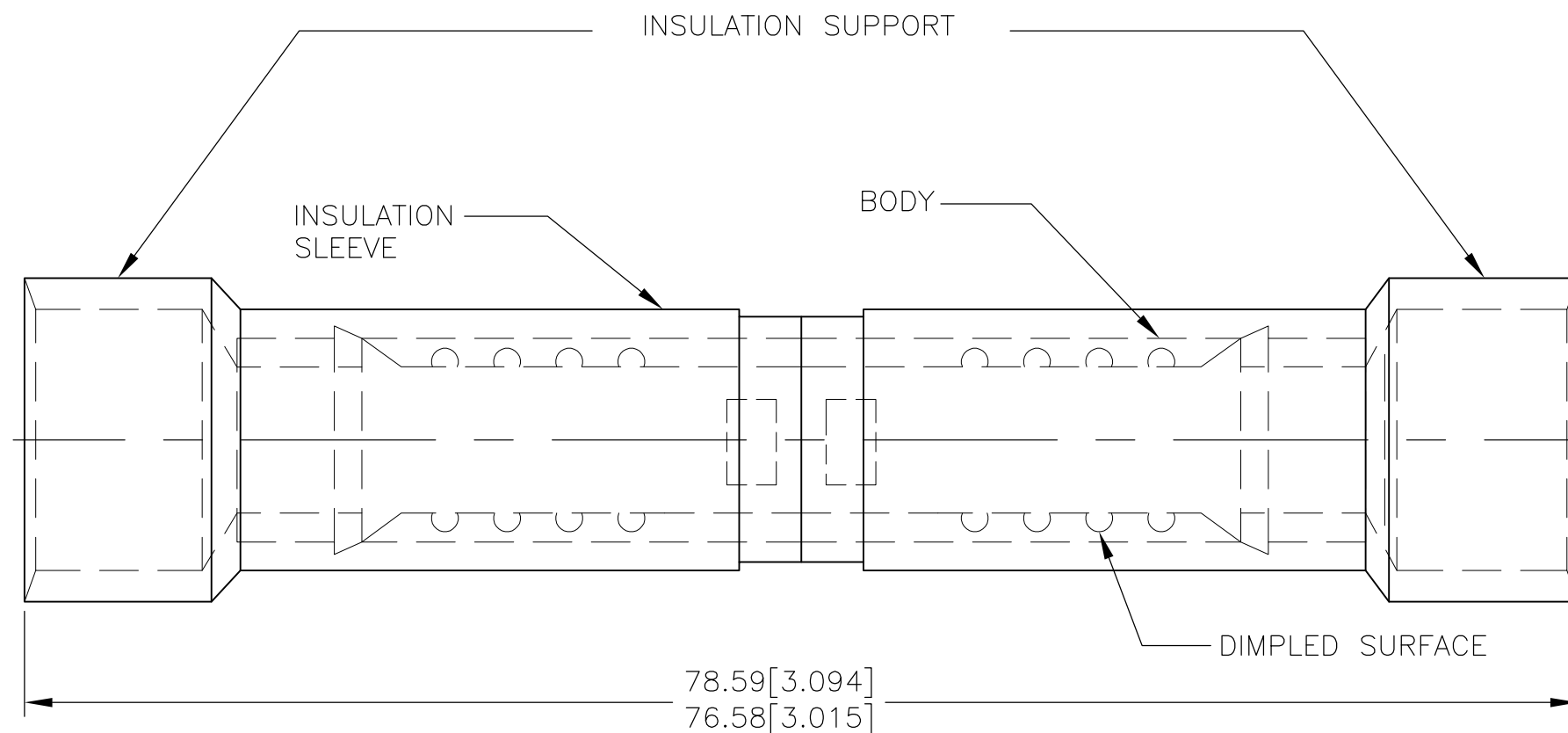
1

THIS DRAWING IS UNPUBLISHED. RELEASED FOR PUBLICATION - , - .
 © COPYRIGHT - By - ALL RIGHTS RESERVED.

| LOC | DIST | REVISIONS | | | | | |
|-----|------|-----------|-----|---------------------------|-----------|-----|------|
| G | 14 | P | LTR | DESCRIPTION | DATE | DWN | APVD |
| | | F | | REVISED PER ECO-14-019230 | 04APR2015 | NK | DR |

AMP
WIRE RANGE

2 AWG
STRANDED



1 WIRE INSULATION DIA 15.11 [.595] MAX.

OBSOLETE

| | | | | | | | | | | | | | |
|--|--|--|---|--|--------------------------------|---|--|-------|--------------|------------|---------------|-----|---|
| AMP INCORPORATED CUSTOMER SERVICE SYSTEMS | | MAX RECOMMENDED OPERATING TEMPERATURE: 105° C | THIS DRAWING IS A CONTROLLED DOCUMENT. | | DWN S.S. GOULDEN 8-30-93 | TE TE Connectivity | | 50 | LOOSE PC | 324663 | | | |
| FOR ADDITIONAL PRODUCT INFORMATION OR COPIES OF DRAWINGS AND TECHNICAL DOCUMENTS | PRODUCT INFORMATION CENTER 1-800-522-6752 | VOLTAGE RATING: 600 V MAX | DIMENSIONS: mm[INCHES] | TOLERANCES UNLESS OTHERWISE SPECIFIED: | CHK R. HERSEY 8-30-93 | NAME SPLICE, BUTT, MULTIPLE TO MULTIPLE, TERMINYL, WIRE SIZE: 2 AWG | | QTY | PACKAGE TYPE | PART NO | | | |
| FOR APPLICATION TOOLING INFORMATION | TOOLING ASSISTANCE CENTER 1-800-722-1111 | CIRCULAR MIL AREA: 26.65-42.41mm ² [52,600-83,700] STRANDED | | 0 PLC ± - 1 PLC ± - 2 PLC ± 0.20[.008] 3 PLC ± - 4 PLC ± - ANGLES ± - | APVD B. BARE 8-30-93 | APPLICATION SPEC | | SIZE | CAGE CODE | DRAWING NO | RESTRICTED TO | | |
| FOR ORDER ENTRY | 1-800-526-5142 | | MATERIAL COPPER PER ASTM B-152 NYLON, COLOR:RED | FINISH TIN PLATE PER MIL-T-10727 | PRODUCT SPEC | WEIGHT | | A3 | 00779 | C-324663 | | | |
| CUSTOMER DRAWING | | | | | | | | SCALE | NTS | SHEET | 1 of 1 | REV | F |