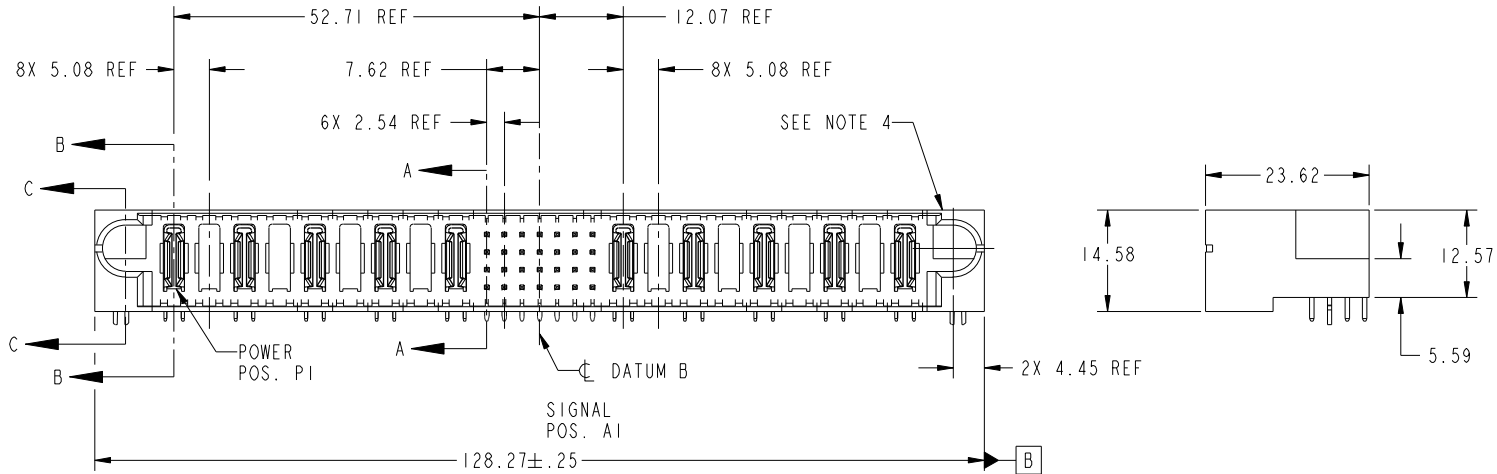


Tous droits strictement reserves. Reproduction ou communication a des tiers interdite sous quelque forme que ce soit sans autorisation écrite du propriétaire. Propriete de c FCI. Droits de reproduction FCI.

All rights strictly reserved. Reproduction or issue to third parties in any form whatever is not permitted without written authority from the proprietor. Property of FCI. Copyright FCI.



PRODUCT NO.	ROWS	POWER								SIGNAL							POWER												
		E1	P1	P2	P3	P4	P5	P6	P7	P8	P9	1	2	3	4	5	6	7	P10	P11	P12	P13	P14	P15	P16	P17	P18	E2	
51730-135-- NOTE 3	D C B A	HA	PA	X	PA	X	PA	X	PA	X	PA	X	PA	UUUUUUUU	TTTTTTTTTT	SSSSSSSSSS	RRRRRRRRRR	PA	X	PA	X	PA	X	PA	X	PA	X	PA	HA



CODE	DIM "M" MATING LENGTH	CONTACT TYPE
U	[6.86]	SIGNAL
T	[6.86]	SIGNAL
S	[6.86]	SIGNAL
R	[6.86]	SIGNAL
PA	[N/A]	POWER
HA	[N/A]	HOLD-DOWN
X	[N/A]	OMITTED

mat'l code				SEE NOTE		tolerances unless otherwise specified		CUSTOMER		FCI	
ltr	ecn no.	dr	date	linear	0.X ± 0.3	projection	1	2	www.fciconnect.com		title
A	DG07-0408	JC	09/27/07	angles	0.XX ± 0.13	MM	1	2	9P + 28S + 9P		RIGHT ANGLE SOLDER HEADER
B	DG08-0042	SH	02/21/08		0.XXX ± 0.051	1:1	1	2	product family	PwrBlade	code
				dr	0° ± 2°		1	2	size	A	213
				enrg	Jerome Chen 09/27/07		1	2	dwg no	51730-135	sheet
				chr	Jerome Chen 09/27/07		1	2	scale	1:1	1 of 4
				appd	Gary Hsieh 09/27/07		1	2			
					Joseph Hsia 09/27/07		1	2			
sheet index	revision sheet	B 1	B 2	B 3	B 4						
									cage code	22526	

Pro/E

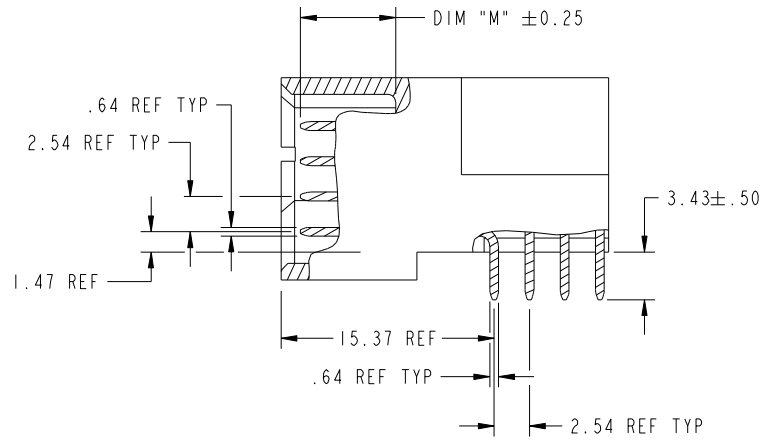
cage code 22526

Tous droits strictement reserves. Reproduction ou communication a des tiers interdite sous quelque forme que ce soit sans autorisation écrite du propriétaire. Propriete de c FCI. Droits de reproduction FCI.

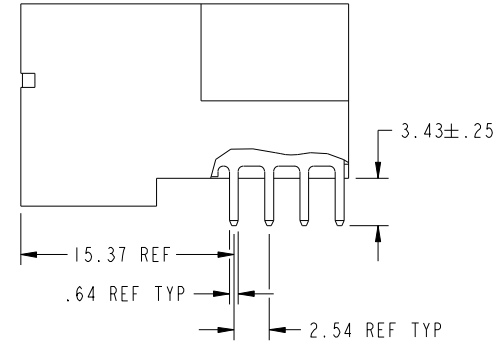
All rights strictly reserved. Reproduction or issue to third parties in any form whatever is not permitted without written authority from the proprietor. Property of FCI. Copyright FCI.



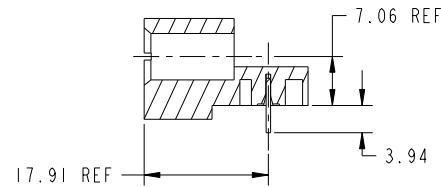
PRODUCT NUMBER  
51730-135-  
NOTE: 3



BROKEN-OUT SECTION A-A  
SCALE 2:1



BROKEN-OUT SECTION B-B  
SCALE 2:1



SECTION C-C

mat'l code		SEE NOTE		tolerances unless otherwise specified		CUSTOMER		 www.fciconnect.com	
ltr	ecn no.	dr	date	linear	0.X ±0.3	COPY		title	
B					0.XX ±0.13	projection		9P + 28S + 9P	
				angles	0.XXX ±0.051			RIGHT ANGLE SOLDER HEADER	
					0° ±2°			product family PwrBlade code	
				dr	Jerome Chen 09/27/07	scale		size	
				enr	Jerome Chen 09/27/07	1:1		dwg no	
				chr	Gary Hsieh 09/27/07	A		51730-135	
				appd	Joseph Hsia 09/27/07			sheet	
sheet index	revision sheet							2 of 4	

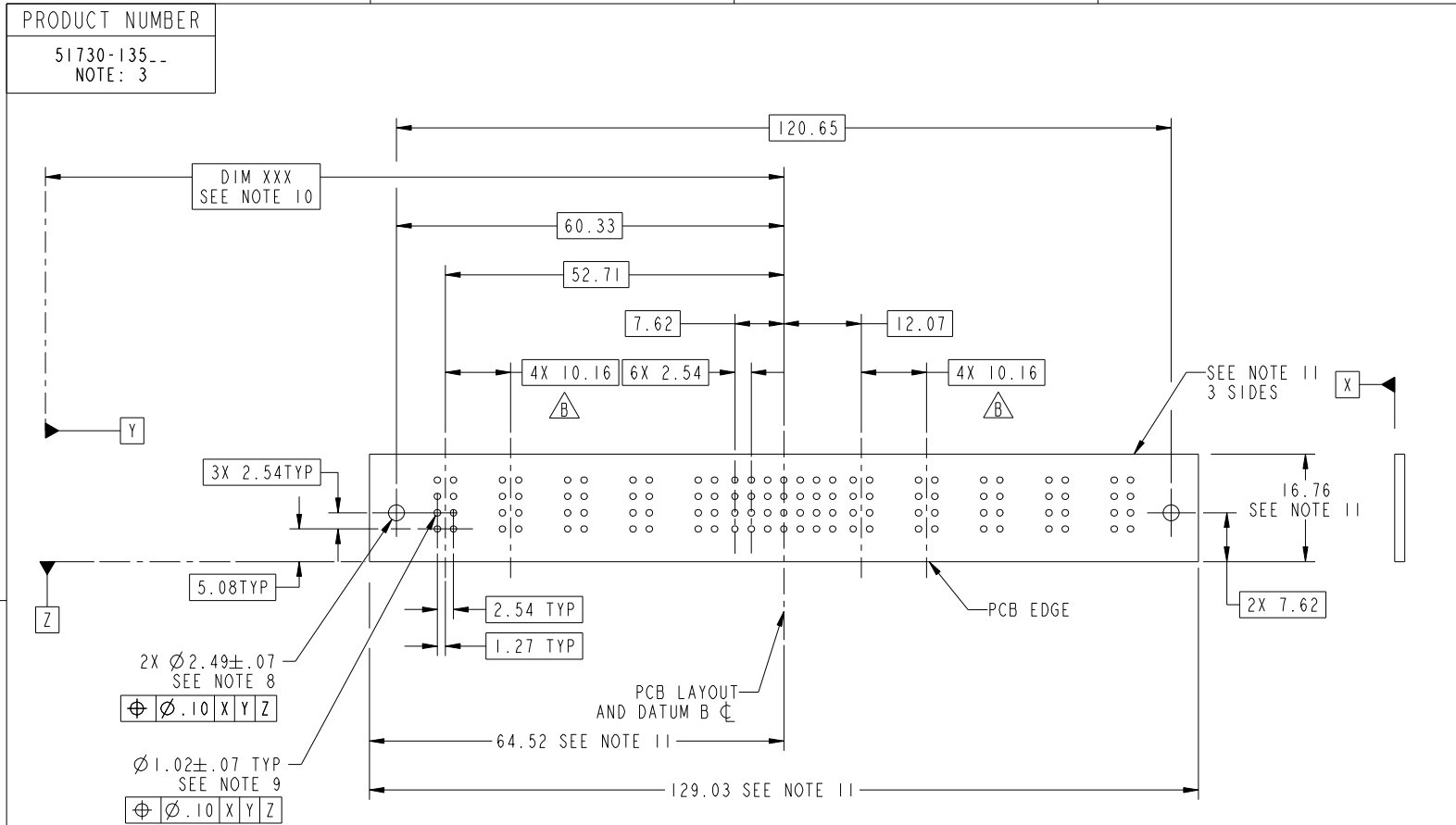
cage code 22526

Pro/E

Tous droits strictement reserves. Reproduction ou communication a des tiers interdite sous quelque forme que ce soit sans autorisation écrite du propriétaire. Propriete de c FCI. Droits de reproduction FCI.



All rights strictly reserved. Reproduction or issue to third parties in any form whatever is not permitted without written authority from the proprietor. Property of FCI. Copyright FCI.



RECOMMENDED PCB LAYOUT

mat'l code				SEE NOTE	tolerances unless otherwise specified		CUSTOMER		 www.fciconnect.com	
ltr	ecn no.	dr	date	linear	0.X ± 0.3	COPY		title		
B					0.XX ± 0.13	projection		9P + 28S + 9P		
				angles	0.XXX ± 0.051			RIGHT ANGLE SOLDER HEADER		
				dr	Jerome Chen 09/27/07	MIM		product family	PwrBlade	code
				enr	Jerome Chen 09/27/07			size	dwg no	213
				chr	Gary Hsieh 09/27/07	scale		A	51730-135	sheet
				appd	Joseph Hsia 09/27/07	1:1				3 of 4
sheet index	revision sheet									

cage code 22526

Pro/E

Tous droits strictement réservés. Reproduction ou communication a des tiers interdite sous quelque forme que ce soit sans autorisation écrite du propriétaire. Propriété de c FCI. Droits de reproduction FCI.



All rights strictly reserved. Reproduction or issue to third parties in any form whatever is not permitted without written authority from the proprietor. Property of FCI. Copyright FCI.

PRODUCT NUMBER  
51730-135--  
NOTE: 3

NOTES:

1. DIMENSIONS AND TOLERANCES ARE IN ACCORDANCE WITH ASME Y14.5M, 1994 UNLESS OTHERWISE SPECIFIED.

CONNECTOR NOTES:

- 2. HOUSING MATERIAL: UL 94 V-0 GLASS FILLED HIGH-TEMP THERMOPLASTIC  
POWER CONTACT MATERIAL: COPPER ALLOY  
SIGNAL PIN MATERIAL: COPPER ALLOY
  - 3. 51730-135; 51730-135LF PLATING SPEC. SEE PRINT:10064183
  - 4. MANUFACTURER'S NAME, P/N, AND DATE CODE TO APPEAR ON THIS SURFACE.
  - 5. PRODUCT SPECIFICATION GS-12-149.  
APPLICATION SPECIFICATION BUS-20-067.
  - 6. PACKAGED IN TRAYS.
- PCB NOTES:
- 7. ALL HOLE DIAMETERS ARE FINISHED HOLE SIZE.
  - 8. MOUNTING HOLES, WHERE APPLICABLE, ARE UNPLATED.
  - 9.  $\varnothing 1.151 \pm 0.025$  DRILLED HOLES PLATED WITH  
0.008 MIN SnPb OR Sn OVER 0.03  
TO 0.08 Cu PLATING TO ACHIEVE  
 $\varnothing 1.02 \pm .07$  HOLE.
  - 10. "DIM XXX" TO BE DETERMINED BY THE CUSTOMER.
  - 11. CONNECTOR KEEP-OUT ZONE.
  - 12. A  $\triangle B$  SYMBOL WILL BE NEXT TO ANY DIMENSION, VIEW, OR NOTE WHICH HAS BEEN MODIFIED WITH CURRENT DRAWING REVISION.

mat'l code				SEE NOTE	tolerances unless otherwise specified	CUSTOMER	FCI www.fciconnect.com	
ltr	ecr no.	dr	date	linear	0.X ± 0.3	COPY	title	
B					0.XX ± 0.13	projection	9P + 28S + 9P RIGHT ANGLE SOLDER HEADER	
				angles	0.XXX ± 0.051		product family PwrBlade code 213	
				dr	0° ± 2°	MIM	size	sheet
				enr	Jerome Chen 09/27/07	← MIM →	dwg no	4 of 4
				chr	Jerome Chen 09/27/07	scale	A	
				appd	Gary Hsieh 09/27/07	1:1	51730-135	
					Joseph Hsia 09/27/07			
sheet index	revision sheet							

cage code 22526

Pro/E