

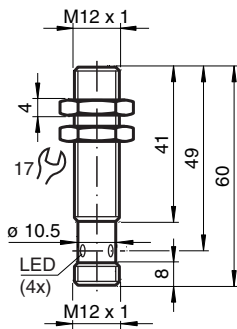
Magnetic field sensor MMB70-12GH50-1N-V1



- Comfort series
- 70 mm flush



Dimensions



Technical Data

General specifications

Switching function		Normally open (NO)
Output type		NAMUR
Rated operating distance	s_n	5 ... 70 mm
Installation		flush in non-magnetic metal
Output type		2-wire

Nominal ratings

Nominal voltage	U_o	8.2 V (R_i approx. 1 k Ω)
Switching frequency	f	0 ... 1000 Hz
Current consumption		
Magnet detected		≥ 2.5 mA
Magnet not detected		≤ 1 mA
Switching state indicator		LED, yellow

Functional safety related parameters

Release date: 2021-04-16 Date of issue: 2021-04-16 Filename: 70108302_eng.pdf

Refer to "General Notes Relating to Pepperl+Fuchs Product Information".

Pepperl+Fuchs Group
www.pepperl-fuchs.com

USA: +1 330 486 0001
fa-info@us.pepperl-fuchs.com

Germany: +49 621 776 1111
fa-info@de.pepperl-fuchs.com

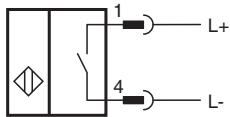
Singapore: +65 6779 9091
fa-info@sg.pepperl-fuchs.com

PEPPERL+FUCHS

Technical Data

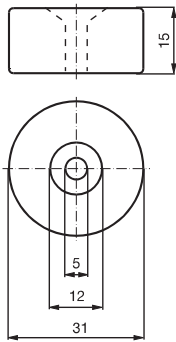
MTTF _d	3477 a
Mission Time (T _M)	20 a
Diagnostic Coverage (DC)	0 %
Compliance with standards and directives	
Standard conformity	
NAMUR	EN 60947-5-6:2000
Standards	EN 60947-5-2:2007 EN 60947-5-2/A1:2012
Approvals and certificates	
IECEX approval	
Equipment protection level Ga	IECEX TUN 20.0007
Equipment protection level Da	IECEX TUN 20.0007
ATEX approval	
Equipment protection level Ga	TÜV 20 ATEX 241336
Equipment protection level Da	TÜV 20 ATEX 241336
Ambient conditions	
Ambient temperature	-25 ... 70 °C (-13 ... 158 °F)
Mechanical specifications	
Connection type	Connector plug M12 x 1 , 4-pin
Housing material	stainless steel 1.4404 / AISI 316L
Sensing face	stainless steel 1.4404 / AISI 316L
Degree of protection	IP67
General information	
Use in the hazardous area	see instruction manuals

Connection

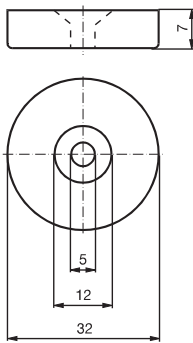


Additional Information





Magnet DM 60-31-15



Magnet DM 25-32-07



Accessories

	BF 12	Mounting flange, 12 mm
	EXG-12	Quick mounting bracket with dead stop
	DM 60-31-15	Permanent magnet for magnetic field sensors
	DM 25-32-07	Permanent magnet for magnetic field sensors

Release date: 2021-04-16 Date of issue: 2021-04-16 Filename: 70108302_eng.pdf