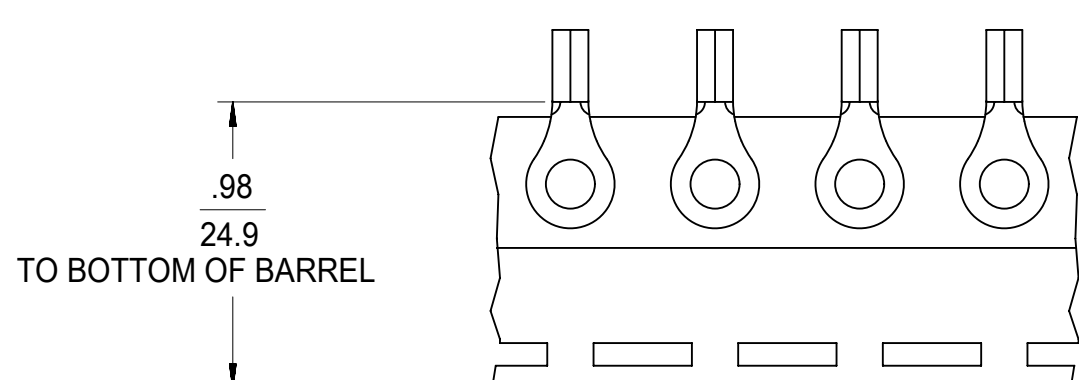
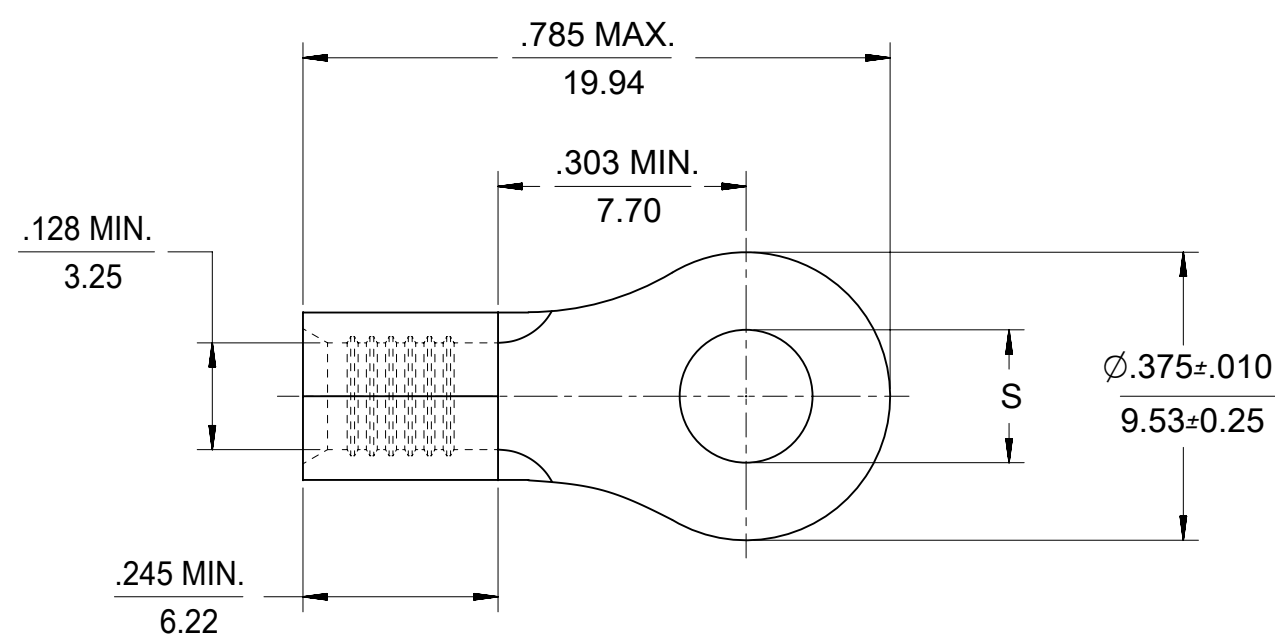


MAT'L NO. (LOOSE PIECE)	ENG. NO.	MAT'L NO. (TAPE MOUNTED)	ENG. NO.	STUD SIZE	"S" ±.005 (0.13)	STOCK THICKNESS	FINISH
190690200	C-128-04	190690147	C-128-04T	4	.126 (3.20)	COPPER .040 (1.02)	SEE NOTE 1
190690202	C-128-06	----- A2	-----	6	.146 (3.71)		
190690205	C-128-08	190690208	C-128-08T	8	.173 (4.39)		
190690209	C-128-10	190690212	C-128-10T	10	.198 (5.03)		
190690215	C-128-209	-----	-----	209	.209 (5.18)	NICKEL A2	NONE A2
192030159	C-U-128-06	----- A2	-----	6	.146 (3.71)		
192030160	C-U-128-08	----- A2	-----	8	.173 (4.39)		
192030113	C-U-128-10	192030114	C-U-128-10T	10	.198 (5.03)	COPPER .040 (1.02)	SEE NOTE 2
190690682	C-128-10-AU	-----	-----	10	.198 (5.03)		



- A2** NOTES:
1. FINISH: TIN PLATING, 100(2.5)µin(µm) MIN
 2. FINISH: GOLD, 50(1.25)µin(µm) MIN. OVER NICKEL, 50(1.25)µin(µm) MIN. PLATING.
 3. WIRE SIZE: 12-10 AWG, 4.0-6.0 MM²
 3. PARTS ARE RoHS COMPLIANT.

THIS DRAWING CONTAINS INFORMATION THAT IS PROPRIETARY TO MOLEX ELECTRONIC TECHNOLOGIES, LLC AND SHOULD NOT BE USED WITHOUT WRITTEN PERMISSION									
SYMBOLS		DIMENSION UNITS		SCALE		CURRENT REV DESC: PLATING ERR ON DWG			
▽ = 0		INCH/MM		1:1		molex RING TONGUE TERMINAL KRIMPTITE, 128 SERIES 12-10 AWG PRODUCT CUSTOMER DRAWING DOCUMENT NUMBER: SD-19069-020 DOC TYPE: PSD DOC PART: 001 REVISION: A2 MATERIAL NUMBER: CUSTOMER: GENERAL MARKET SHEET NUMBER: 1 OF 1			
▽ = 0		GENERAL TOLERANCES (UNLESS SPECIFIED)							
▽ = 0		MM		INCH					
▽ = 0		4 PLACES ±		±					
▽ = 0		3 PLACES ±		±					
▽ = 0		2 PLACES ±		±		EC NO: 621682 DRWN: DMYRICK 2019/07/26 CHK'D: GROJAS01 2019/08/13 APPR: GROJAS01 2019/08/13 INITIAL REVISION: DRWN: APPR:			
▽ = 0		1 PLACE ±		±		THIRD ANGLE PROJECTION			
▽ = 0		0 PLACES ±		±		DRAWING		SERIES	
□ = 0		ANGULAR TOL ± °		± °		B-SIZE		19069	
■ = 0		DRAFT WHERE APPLICABLE MUST REMAIN WITHIN DIMENSIONS				DRAWING		SERIES	
▽ = 0		DRAFT WHERE APPLICABLE MUST REMAIN WITHIN DIMENSIONS		THIRD ANGLE PROJECTION		DRAWING		SERIES	