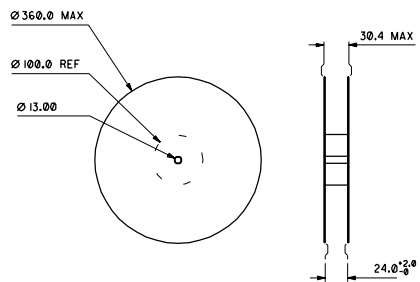
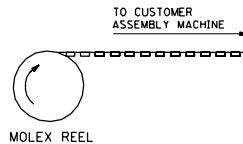
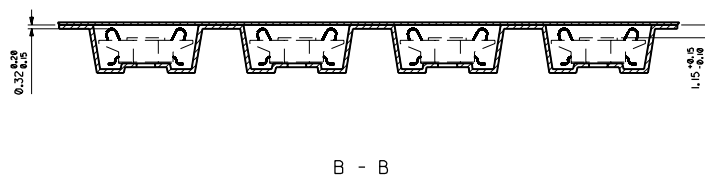


REFERENCE ONLY



REEL DIMENSIONS
DO NOT SCALE

- (1600) PIECES / REEL - SUBJECT TO CHANGE
- (5) REELS / CARDBOARD BOX
- (8000) PIECES / CARDBOARD BOX



COMPONENTS	PART NO.
HOUSING	91361-0001
TERMINAL	91301-0002

NOTES:

- MATERIAL :
CARRIER TAPE : VOLUME CONDUCTIVE POLYSTYRENE , 0.40 REF THICK , BLACK
COVER TAPE : COLD SEAL POLYESTER , 0.06 REF THICK , TRANSPARENT
- PITCH TOLERANCE OVER ANY 10 PITCHES ± 0.20
- PEEL FORCE OF THE COVER TAPE IS 0.1N TO 1.0N
AT A MAXIMUM PEEL SPEED OF 300/min. ± 10%
- PACKAGING SPEC. TBA.
- REFERENCE TO IEC 286-3 EXCEPT WHERE NOTED

REV	DESCRIPTION	GENERAL TOLERANCES: (UNLESS SPECIFIED)		SCALE	DESIGN UNITS	THIRD ANGLE PROJECTION	DIMENSIONS:		SHT	REV
		mm	INCH				mm	INCH		
C	DIMS FOR SUCTION PAD EC No. E2001-0763 DRW: ROC CHK: / APP: /	4 PLACES	± 0.10	±	5 : 1	mm	mm	mm		
		3 PLACES	± 0.10	±		mm	mm	mm		
		2 PLACES	± 0.10	±		mm	mm	mm		
		1 PLACE	± 0.20	±		mm	mm	mm		
			ANGULAR: ± 1/2°							
			DRAFT WHERE APPLICABLE MUST REMAIN WITHIN DIMENSIONS							
			THIS DRAWING CONTAINS INFORMATION THAT IS PROPRIETARY TO MOLEX INCORPORATED AND SHOULD NOT BE USED WITHOUT WRITTEN PERMISSION.							
			DRAWN BY & DATE ROCONNOR 99/04/15							
			CHECKED BY & DATE MKEANE 99/04/16							
			APPROVED BY & DATE MWILHITE 99/04/19							
			CAD FILENAME S91361X1.DGN							
			MATERIAL NO. 91361-0002							
			DRAWING NO. SD-91361-004							
			SHEET NO. 1 OF 1							
			SIZE D							