

THIS DRAWING IS UNPUBLISHED. RELEASED FOR PUBLICATION 20
 © COPYRIGHT 20 BY - ALL RIGHTS RESERVED.

REVISIONS					
P	LTR	DESCRIPTION	DATE	DWN	APVD
C2		REVISED PER ECR-14-001994	11FEB2014	A.Z	D.Z
D		REVISED PER ECR-19-009721	01JUL2019	M.G	D.Z

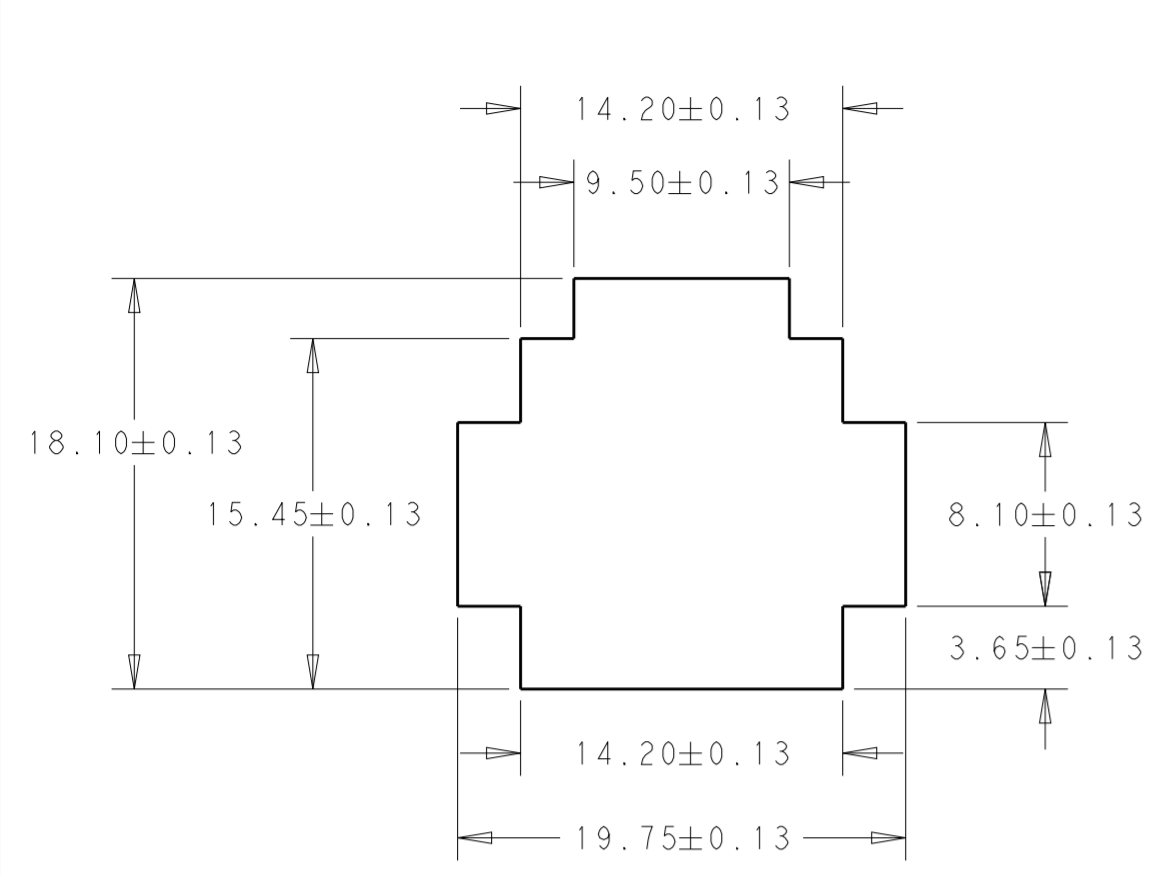
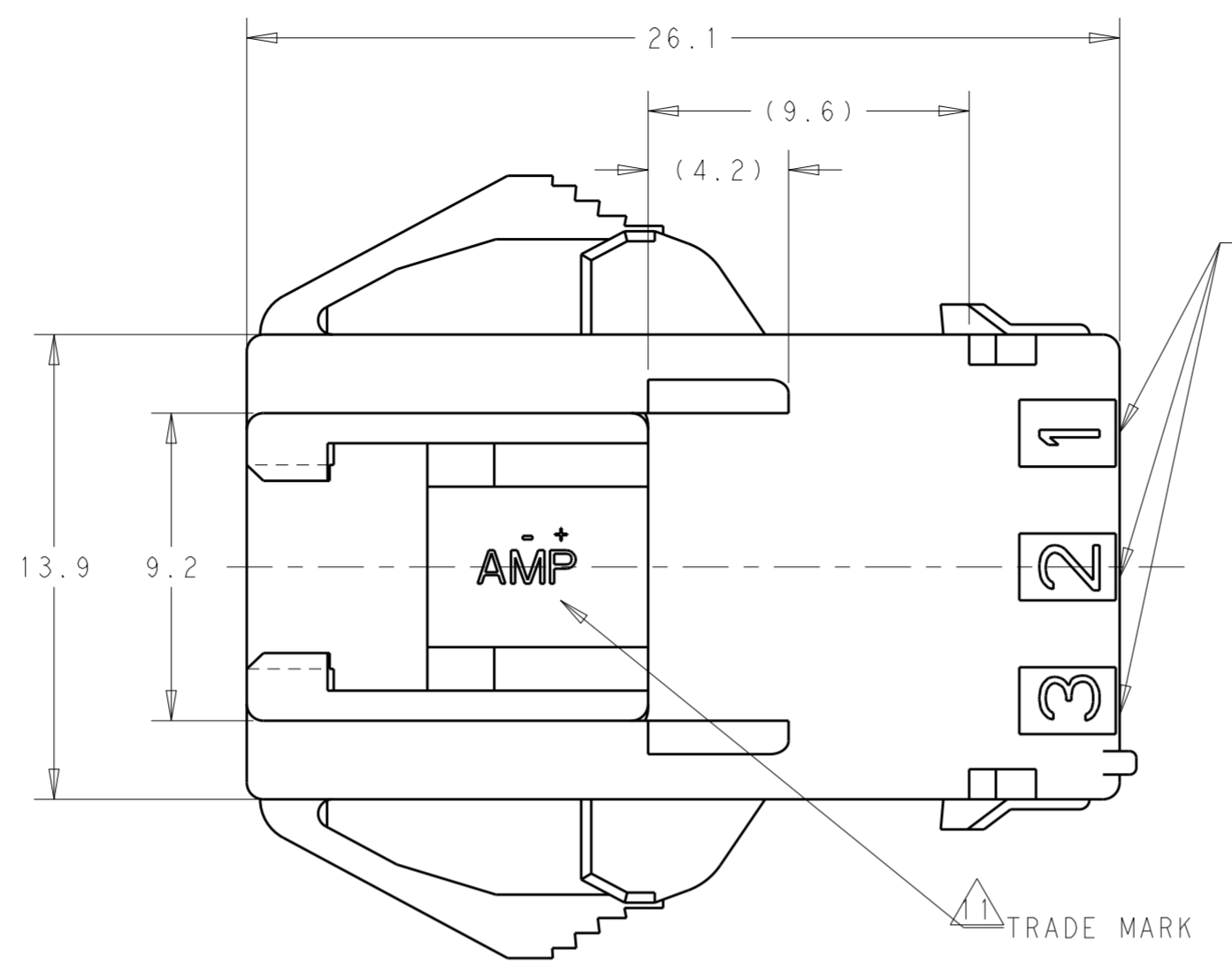
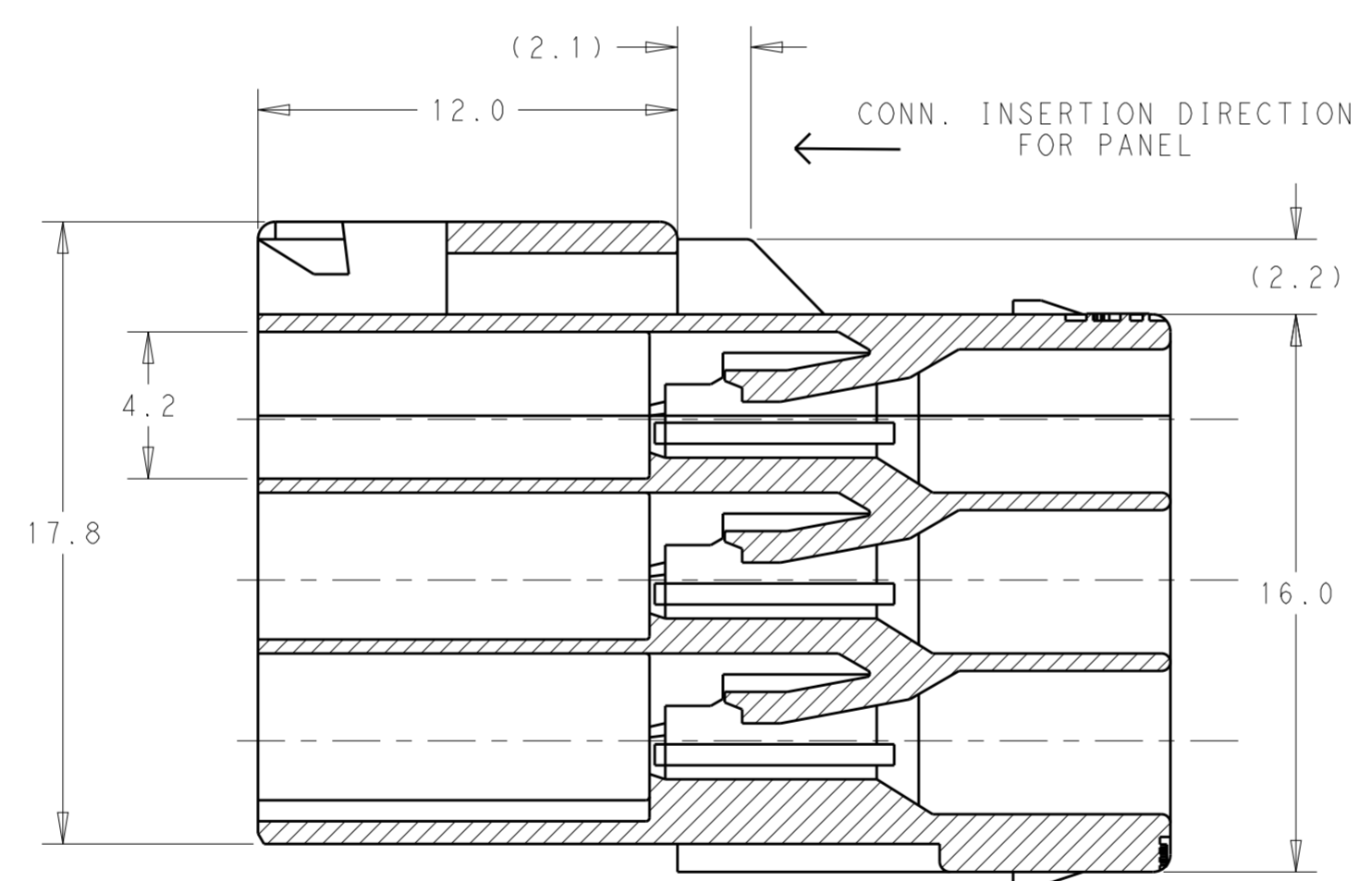
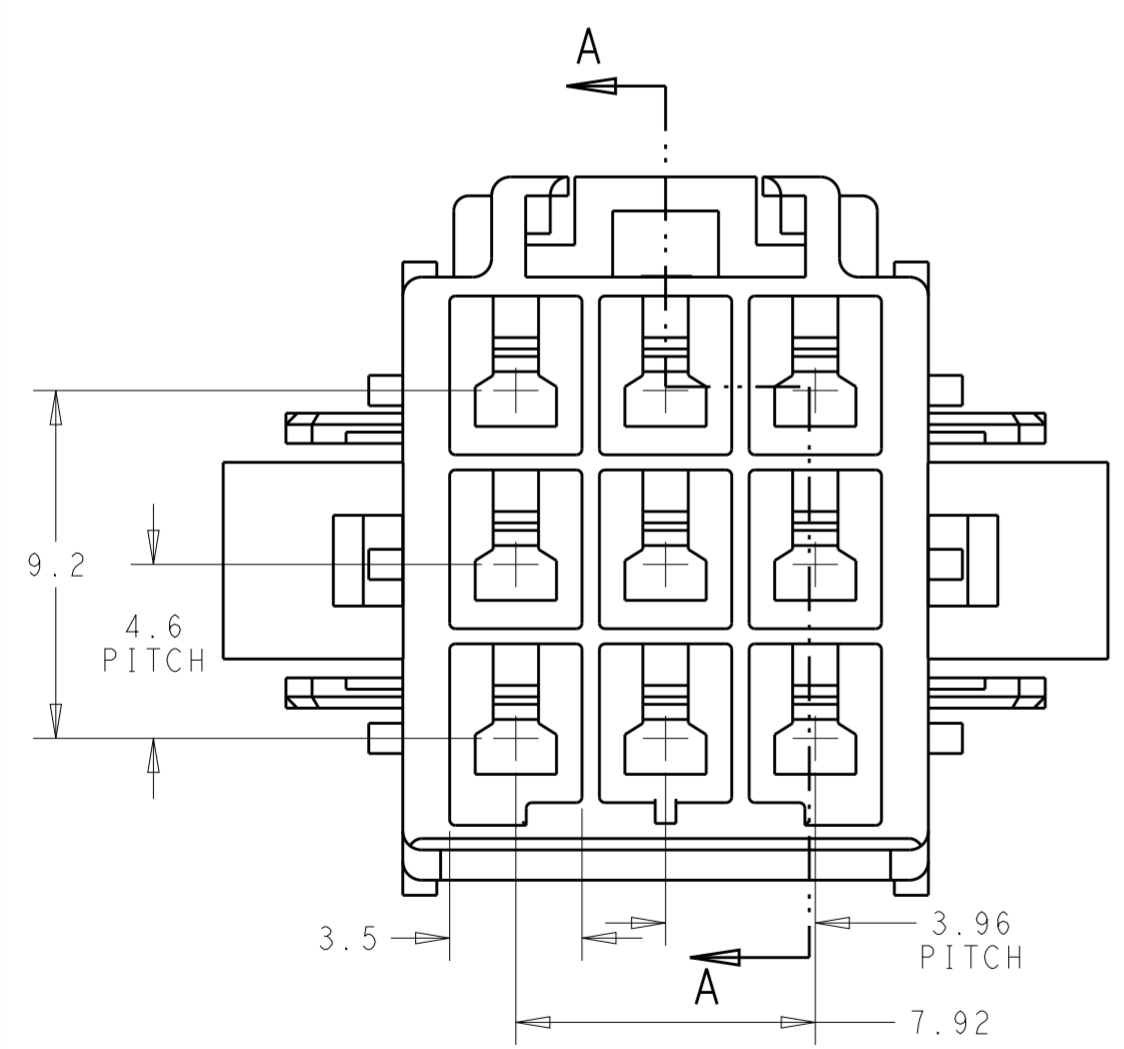


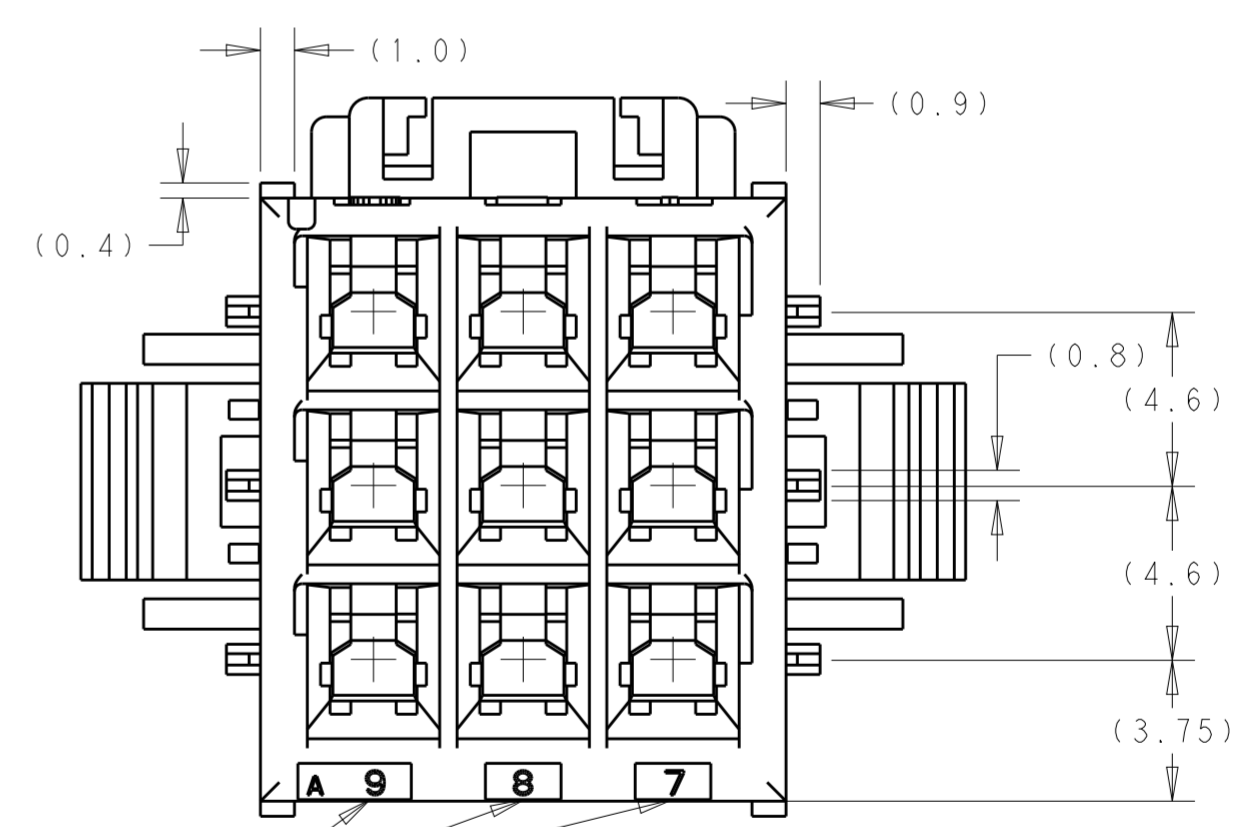
FIG 1
RECOMMENDED PANEL OPENING DIMENSION



- THIS HOUSING ACCEPTS TAB TERMINAL:
TAB CONTACT: 177917-□ (#20-#16AWG)
177916-□ (#26-#22AWG)
- MATING CONN. P/N
PLUG HSG: □-177903-□ (#20-#16AWG)
REC CONTACT: 177915-□ (#20-#16AWG)
177914-□ (#26-#22AWG)
- APPLICABLE PLATE P/N: 177919-□
- INSTRUCTION SHEET: 411-5638
- APPLICABLE PANEL THICKNESS: 0.8~2.0(SEE FIG 1)
- INSERT CONN. FROM PRESS DIRECTION SIDE FOR METAL PANEL.
- EDGE OF THICKNESS WAY MUST NOT ROUND FOR MOLDED PANEL.
- ALL PARTS MEET RTI ELECTRICAL RATING OF 105°C ACCORDING TO UL 1977.
- MATERIAL: 6/6 NYLON UL94V-0
- PART 5-177911-1 COMPLY WITH GLOW WIRE REQUIREMENT FOR PARTS OF NON-METALLIC MATERIAL SUPPORTING A CURRENT-CARRYING CONNECTION DETAILED IN IEC 60335-1, SECTION 30(GWT)
- SEE TABLE 1
- GENERAL TOLERANCE:
<10:±0.2
10~30:±0.25,
ANGLE:±3°



SECTION A-A



CIRCUIT NO.

9	NATURAL	5-177911-1
9	BLUE	177911-6
9	YELLOW	177911-4
9	NATURAL	177911-1
POS	COLOR	PART NUMBER

TABLE 1

TRADE MARK	MANUFACTURING PLACE
-AMP OR AMP	JAPAN
-+AMP OR AMP	CHINA
+AMP OR AMP	KOREA

THIS DRAWING IS A CONTROLLED DOCUMENT.

DWN	M. SUZUKI	09SEPT1993
CHK	M. SHINDO	09SEPT1993
APVD	Y. KASHIWA	09SEPT1993

PRODUCT SPEC: 108-5410
 APPLICATION SPEC: 114-5175
 WEIGHT: -

STE TE Connectivity

NAME: AMP POWER DBL LOCK CONN, 3.96mm PITCH (TRIPLE ROW) 9 Pos CAP HOUSING (PANEL MOUNT)

SIZE: A2 CAGE CODE: 00779 DRAWING NO: C-177911 RESTRICTED TO: -

CUSTOMER DRAWING SCALE: 5:1 SHEET: 1 OF 1 REV: D