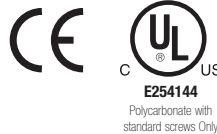
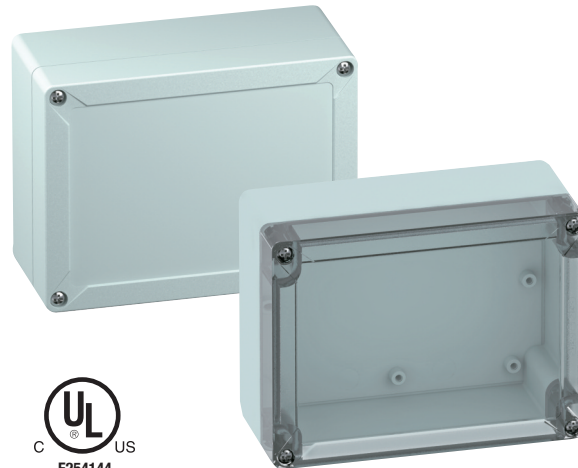


# TG1612-9 – ABS and Polycarbonate – 162 x 122 x 90 mm (6.38 x 4.80 x 3.54 in.)

## Standard Features

- **Protection Level:** IP67 (UL TYPE 4X/12\*)
- **Technical:**
  - Smooth Sidewalls
  - Gray or Transparent Cover
  - Standard or Quick Turn Screws
  - 135 x 95 x 0.4 mm Recess in Cover
  - Integrated Cover Retainer
- **UL Recognized Enclosure Materials:** ABS or Polycarbonate
- **Transparent Cover Material:** Polycarbonate
- **Gasket Material:** Polyurethane
- **Color:** Light Gray
- **Material Temperature Range:**
  - ABS: -40°C to 80°C (-40°F to 176°F)
  - Polycarbonate: -40°C to 120°C (-40°F to 248°F)
- **Accessories:** See section below



\* UL TYPE 4X (Polycarbonate, standard screws)  
UL TYPE 12 (Polycarbonate, quick turn screws)

## TG

| Ordering Information | Cat. No.            |                      | Type           | Length            | Dimensions mm (in) |                  |   | Std. Pk. |
|----------------------|---------------------|----------------------|----------------|-------------------|--------------------|------------------|---|----------|
|                      | w/ Standard Screws  | w/ Quick Turn Screws |                |                   | Width              | Height           |   |          |
| <b>ABS</b>           |                     |                      |                |                   |                    |                  |   |          |
| Gray cover           | <b>DISCONTINUED</b> | 100-407-01           | TGABS1612-6-o  | 162 mm (6.38 in.) | 122 mm (4.80 in.)  | 90 mm (3.54 in.) | 1 |          |
| Transparent cover    |                     | 101-007-01           | TGABS1612-6-to | 162 mm (6.38 in.) | 122 mm (4.80 in.)  | 90 mm (3.54 in.) | 1 |          |
| <b>Polycarbonate</b> |                     |                      |                |                   |                    |                  |   |          |
| Gray cover           | 200-407-91          | 200-407-01           | TGPC1612-6-o   | 162 mm (6.38 in.) | 122 mm (4.80 in.)  | 90 mm (3.54 in.) | 1 |          |
| Transparent cover    | 201-007-91          | 201-007-01           | TGPC1612-6-to  | 162 mm (6.38 in.) | 122 mm (4.80 in.)  | 90 mm (3.54 in.) | 1 |          |

## Accessories

| Ordering Information              | Cat. No. | Type       | Std. Pk. |
|-----------------------------------|----------|------------|----------|
| Mounting Plate (plastic)          | 186-007  | TGMPI-1612 | 1        |
| Mounting Plate (steel)            | 187-007  | TGMPS-1612 | 1        |
| DIN Rail – TS35-146               | 198-146  | NS35-146   | 1        |
| DIN Rail - TS15-146               | 197-146  | TS15-146   | 1        |
| Internal Hinge Kit Set (longside) | 182-001  | TGISS      | 1        |
| Mounting Tab Kit                  | 182-002  | TGABL      | 1        |

Please refer to pages 149-152 additional accessories and detailed information

