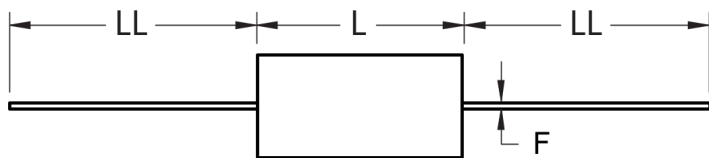
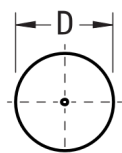


FRONT VIEW



SIDE VIEW



Click [here](#) for the 3D model.

Dimensions

D	22mm MAX
L	33mm MAX
LL	40mm +/-5mm
F	1mm +/-0.05mm

Packaging Specifications

Packaging	Bulk, Bag
Packaging Quantity	100

General Information

Series	A50
Dielectric	Metallized Polyester
Style	Axial
Features	Automotive Grade
RoHS	Yes
Lead	Wire Leads
Qualifications	AEC-Q200
AEC-Q200	Yes
Component Weight	11 g
Miscellaneous	Above 85C DC And AC Voltage Derating Is 1.25%/C. maxK0 = 20000.

Specifications

Capacitance	0.47 μ F
Capacitance Tolerance	10%
Voltage AC	250 VAC
Voltage DC	1000 VDC, 750 VDC (105C)
Temperature Range	-55/+105°C
Rated Temperature	85°C
Dissipation Factor	0.8% 1kHz, 1.2% 10kHz
Insulation Resistance	21.2766 GOhms
Max dV/dt	10 V/us
Inductance	7 nH