

# Serial Memory I<sup>2</sup>C Evaluation Kit

## Quick Start Guide

### Americas

Atlanta, GA - 678-957-9614  
Austin, TX - 512-257-3370  
Boston, MA - 774-760-0087  
Chicago, IL - 630-285-0071  
Dallas, TX - 972-818-7423  
Detroit, MI - 248-848-4000  
Houston, TX - 281-894-5983  
Indianapolis, IN - 317-773-8323  
Los Angeles, CA - 949-462-9523  
New York, NY - 631-435-6000  
Phoenix, AZ - 480-792-7200  
Raleigh, NC - 919-844-7510  
San Jose, CA - 408-735-9110  
Canada - Toronto - 905-695-1980

### Europe

Austria - Wels - 43-7242-2244-39  
Denmark - Copenhagen - 45-4450-2828  
Finland - Espoo - 358-9-4520-820  
France - Paris - 33-1-69-53-63-20  
France - Saint Cloud - 33-1-30-60-70-00  
Germany - Garching - 49-8931-9700  
Germany - Haan - 49-2129-3766400  
Germany - Heilbronn - 49-7131-67-3636  
Germany - Karlsruhe - 49-721-625370  
Germany - Munich - 49-89-627-144-0  
Germany - Rosenheim - 49-8031-354-560  
Israel - Ra'anana - 972-9-744-7705  
Italy - Milan - 39-0331-742611  
Italy - Padova - 39-049-7625286  
Netherlands - Drunen - 31-416-690399  
Norway - Trondheim - 47-7289-7561  
Poland - Warsaw - 48-22-3325737  
Romania - Bucharest - 40-21-407-87-50  
Spain - Madrid - 34-91-708-08-90  
Sweden - Gothenberg - 46-31-704-60-40  
Sweden - Stockholm - 46-8-5090-4654  
UK - Wokingham - 44-118-921-5800

### Asia/Pacific

Australia - Sydney - 61-2-9868-6733  
China - Beijing - 86-10-8569-7000  
China - Chengdu - 86-28-8665-5511  
China - Chongqing - 86-23-8980-9588  
China - Dongguan - 86-769-8702-9880  
China - Guangzhou - 86-20-8755-8029  
China - Hangzhou - 86-571-8792-8115  
China - Hong Kong SAR - 852-2943-5100  
China - Nanjing - 86-25-8473-2460  
China - Qingdao - 86-532-8502-7355  
China - Shanghai - 86-21-3326-8000  
China - Shenyang - 86-24-2334-2829  
China - Shenzhen - 86-755-8864-2200  
China - Wuhan - 86-27-5980-5300  
China - Xian - 86-29-8833-7252  
China - Xiamen - 86-592-2388138  
China - Zhuhai - 86-756-3210040  
India - Bangalore - 91-80-3090-4444  
India - New Delhi - 91-11-4160-8631  
India - Pune - 91-20-4121-0141  
Japan - Osaka - 81-6-6152-7160  
Japan - Tokyo - 81-3-6880-3770  
Korea - Daegu - 82-53-744-4301  
Korea - Seoul - 82-2-554-7200  
Malaysia - Kuala Lumpur - 60-3-7651-7906  
Malaysia - Penang - 60-4-227-8870  
Philippines - Manila - 63-2-634-9065  
Singapore - 65-6334-8870  
Taiwan - Hsin Chu - 886-3-577-8366  
Taiwan - Kaohsiung - 886-7-213-7830  
Taiwan - Taipei - 886-2-2508-8600  
Thailand - Bangkok - 66-2-694-1351  
Vietnam - Ho Chi Minh - 84-28-5448-2100

02/28/20



**MICROCHIP**

Microchip Technology Inc. • 2355 West Chandler Blvd. • Chandler, AZ 85224-6199

[www.microchip.com](http://www.microchip.com)

The Microchip name and logo, the Microchip logo, and MPLAB are registered trademarks of Microchip Technology Incorporated in the U.S.A. and other countries. All other trademarks mentioned herein are property of their respective companies. © 2020, Microchip Technology Incorporated, Printed in the U.S.A. All Rights Reserved. 8/20

DS20005844C

## Overview

The Serial Memory I<sup>2</sup>C Evaluation Kit (DM160237) is an easy-to-use interactive user tool that demonstrates the best-in-class features, functionality and low-power operation of Microchip I<sup>2</sup>C Serial EEPROM devices. The included Graphical User Interface (GUI) makes it easy for engineers and developers to configure and evaluate I<sup>2</sup>C Serial EEPROMs, shortening the overall development time needed to bring new designs from prototype to production.

## Board Schematics, User's Guide and Other Resources

The hardware schematics and other information relating to the Serial Memory I<sup>2</sup>C Evaluation Kit can be found in the user's guide for the board, which can be obtained from <http://www.microchip.com/DM160237>.

## Evaluation Kit Contents

The Serial Memory I<sup>2</sup>C Evaluation Kit comes with a USB Base Board (Figure 1), a I<sup>2</sup>C Socket Board (Figure 2) and various I<sup>2</sup>C (two-wire) Serial EEPROM devices.

## Operating Requirements

For the Serial Memory I<sup>2</sup>C Evaluation Kit to function properly, the following hardware and software requirements must be met:

- PC compatible system
- An available USB port on the PC
- Windows<sup>®</sup> 7 or higher operating systems<sup>(1)</sup>

**Note 1:** Testing was performed on a 64-bit Windows<sup>®</sup> 10 operating system.

# Serial Memory I<sup>2</sup>C Evaluation Kit

## Quick Start Guide

### Evaluation Kit Setup

To start using the evaluation kit, download the latest version of the Graphical User Interface (GUI) which includes the USB driver from <http://www.microchip.com/DM160237>.

Once the GUI and USB driver are installed, simply plug the USB Base Board into the I<sup>2</sup>C Socket Board using the H1 and J1 headers (Figure 3), and plug the USB Base Board into an unused USB port. Launch the GUI by double clicking on the desktop icon or by finding the program under the Microchip program folder.

**Note:** The GUI may prompt the user to update the USB Base Board firmware when the GUI is first started. Please follow the on-screen instructions to update the USB Base Board firmware or use the USB Base Board Firmware Update procedure as outlined in the User's Guide.

FIGURE 1: USB BASE BOARD (02-10682)

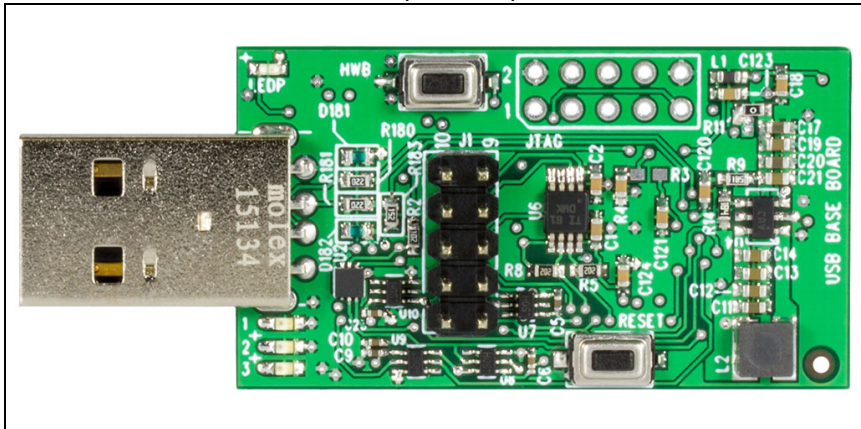


FIGURE 2: I<sup>2</sup>C SOCKET BOARD (02-10727)

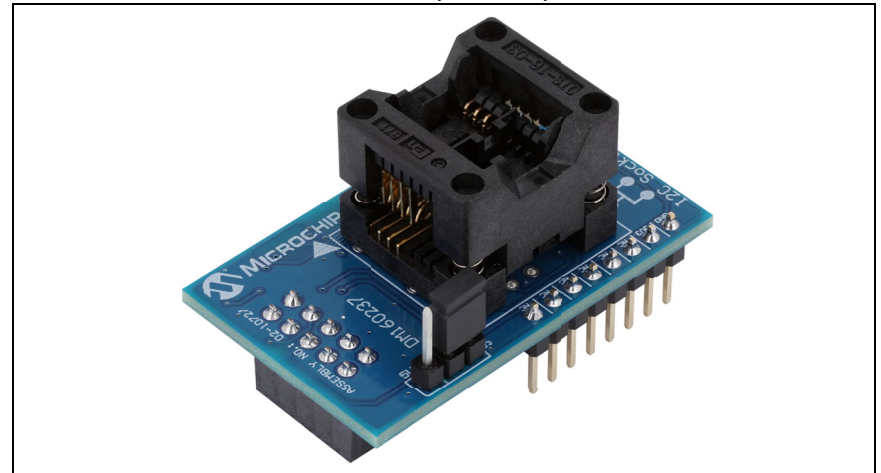


FIGURE 3: DM160237 USB BASE BOARD AND I<sup>2</sup>C SOCKET BOARD

