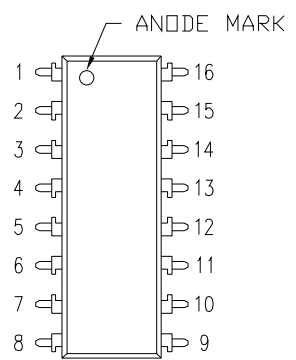
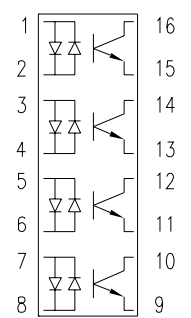


UNCONTROLLED DOCUMENT

PART NUMBER		REV.
OCP-PCT4216/X-TR		
REV.	E.C.N. NUMBER AND REVISION COMMENTS	DATE



TOP VIEW

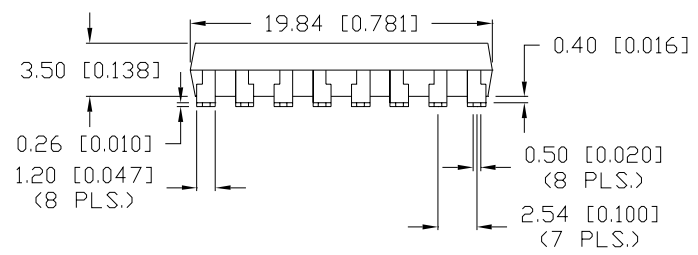
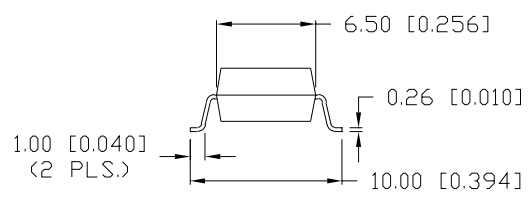


NOTES:

- 1,3,5,7. ANODE/CATHODE  
2,4,6,8. CATHODE/ANODE  
9,11,13,15. EMITTER  
10,12,14,16. COLLECTOR
- PARTS CURRENTLY SUPPLIED IN TUBES.  
TAPE SPECS PENDING.

CAUTION: STATIC SENSITIVE DEVICE  
FOLLOW PROPER E.S.D. HANDLING PROCEDURES  
WHEN WORKING WITH THIS PART.

PART=	/X	CTR (%)
	/A	60 TO 600
	/B	60 TO 300



UNCONTROLLED DOCUMENT

\*UNLESS OTHERWISE SPECIFIED TOLERANCE IS ±0.25mm (±0.010")

REV.	PART NUMBER
	OCP-PCT4216/X-TR

**CONFIDENTIAL INFORMATION**  
THE INFORMATION CONTAINED IN THIS DOCUMENT IS THE PROPERTY OF LUMEX INC. EXCEPT AS SPECIFICALLY AUTHORIZED IN WRITING BY LUMEX INC., THE HOLDER OF THIS DOCUMENT SHALL KEEP ALL INFORMATION CONTAINED HEREIN CONFIDENTIAL AND SHALL PROTECT SAME IN WHOLE OR IN PART FROM DISCLOSURE AND DISSEMINATION TO ALL THIRD PARTIES.



290 E. HELLEN ROAD  
PALATINE, ILLINOIS 60067  
PHONE: 1-847-359-2790  
WEB: HTTP://WWW.LUMEX.COM

SIXTEEN PIN SURFACE MOUNT QUAD CHANNEL PHOTOCOUPLER,  
BIPOLEAR INPUT, TRANSITOR OUTPUT,  
WITHOUT EXTERNAL BASE CONNECTION.

**RELIABILITY NOTE**  
OUR MANY YEARS OF EXPERIENCE DATA ACCUMULATION INDICATE THAT SOLDER HEAT IS A MAJOR CAUSE OF EARLY AND FUTURE FAILURE. PLEASE PAY ATTENTION TO YOUR SOLDERING PROCESS.

DRAWN BY:	CHECKED BY:	APPROVED BY:	DATE: 8-12-99
			PAGE: 1 OF 2
			SCALE: N/A

TM/BC