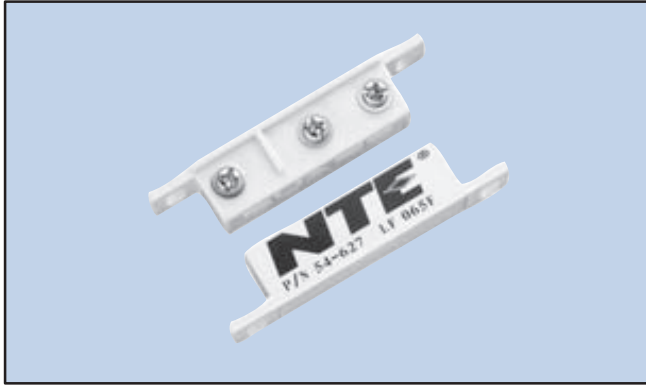


# Magnetic Alarm Switches

## Reed Switch

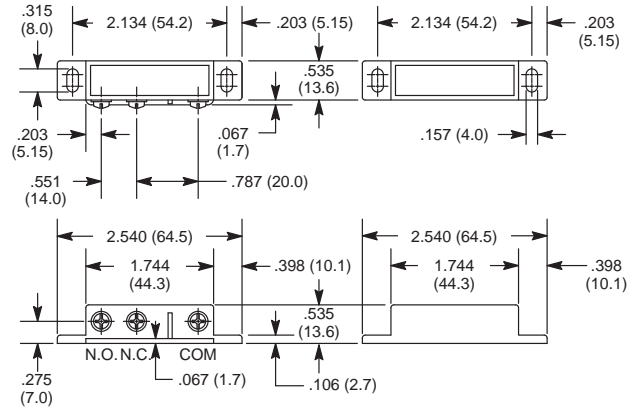
### Features

- Can be installed/wired to be Normally Closed & Normally Open
- Commonly Seen on Door and Window Alarms



NTE Type No.	Circuitry	Action	Actuator	Diag No.
54-627	SPDT	NO or NC	Magnet	S99

### S99



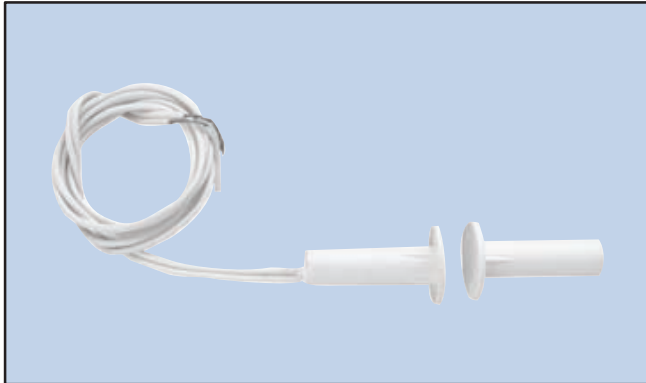
## Specifications

- Contact Rating:** 3 W/VA
- Contact Resistance:** 200 megohms
- Contact Material:** Ruthenium Oxide over Rhodium
- Voltage Rating:** 125 VAC, 100 VDC
- Switching Current:** 250mA
- Insulation Resistance:** 10 gigohms
- Shock Resistance:** nil
- Vibration Resistance:** nil
- Life Expectancy:** 10,000,000 cycles
- Operating Gap:** 1.180" (3cm) max.
- Terminal Type:** Screw
- Mounting Hole:** .157" (4mm)

## Reed Switch

### Features

- 3/8" (9mm) Diameter Press Fit
- Operating Gap\*: 5/8" (16mm) min.
- 18" Wire Leads
- 3/4" (19mm) Collar Flange for Better Retention

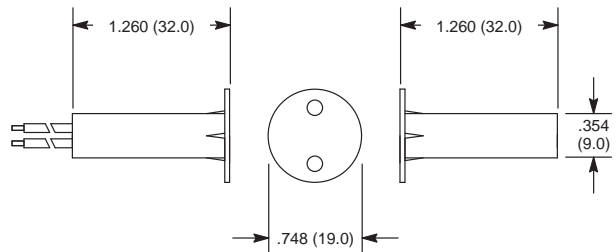


NTE Type No.	Circuitry	Action	Actuator	Diag No.
54-628	SPST-NO	NO for Closed Loop System	Magnet	S100

NOTE: The circuit is open when the magnet is not present.

\* The operating gap is the maximum distance that the magnet can be from the switch before operation is released.

### S100



## Specifications

- Contact Rating:** 10W/VA
- Contact Resistance:** 150 milliohms.
- Contact Material:** Ruthenium Oxide over Palladium
- Switching Voltage:** 200 VDC max.
- Switching Current:** 500mA max.
- Insulation Resistance:** 10 gigohms
- Shock Resistance:** 30G for 11mS
- Vibration Resistance:** 20G (10 to 1000Hz)
- Life Expectancy:** 20,000,000 cycles (resistive load, 12VDC, 250mA)
- Operating Gap:** .629" (16mm) min.
- Terminal Type:** Wire Leads
- Mounting Hole:** .375" (9mm)

# Magnetic Alarm Switches

## Reed Switch

### Features

- 3/8" (9mm) Dia with 18" Long Wire Leads
- Easy & Quick Installation
- Longer Length
- Operating Gap\*: 3/4" (19mm) min.

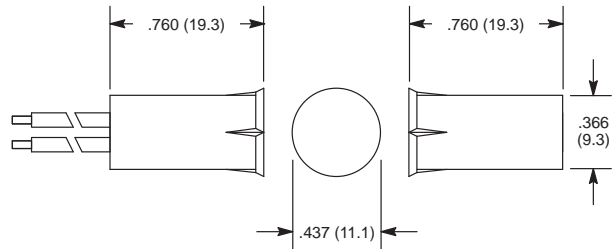


NTE Type No.	Circuitry	Action	Actuator	Diag No.
54-629	SPST-NO	NO for Closed Loop System	Magnet	S101

NOTE: The circuit is open when the magnet is not present.

\* The operating gap is the maximum distance that the magnet can be from the switch before operation is released.

### S101



## Specifications

**Contact Rating:** 10W/VA  
**Contact Resistance:** 150 milliohms.  
**Contact Material:** Ruthenium Oxide over Palladium  
**Switching Voltage:** 200 VDC max.  
**Switching Current:** 500mA max.  
**Insulation Resistance:** 10 gigohms  
**Shock Resistance:** 30G for 11mS  
**Vibration Resistance:** 20G (10 to 1000Hz)  
**Life Expectancy:** 20,000,000 cycles (resistive load, 12VDC, 250mA)  
**Operating Gap:** .748" (19mm) min.  
**Terminal Type:** Wire Leads  
**Mounting Hole:** .375" (9mm)

## Reed Switch

### Features

- 3/8" (9mm) Dia with Adaptor Holder
- Operating Gap\*: 3/4" (19mm) min.
- Easy & Quick Installation
- 3/4" Adaptor/Holder

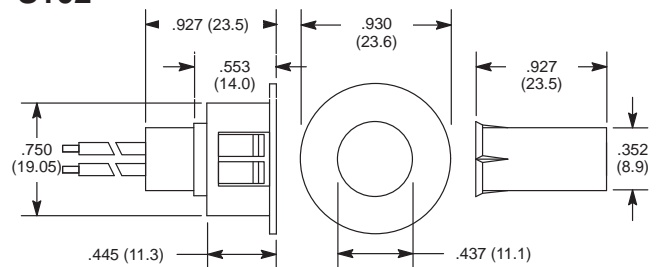


NTE Type No.	Circuitry	Action	Actuator	Diag No.
54-631	SPST-NO	NO for Closed Loop System	Magnet	S102

NOTE: The circuit is open when the magnet is not present.

\* The operating gap is the maximum distance that the magnet can be from the switch before operation is released.

### S102



## Specifications

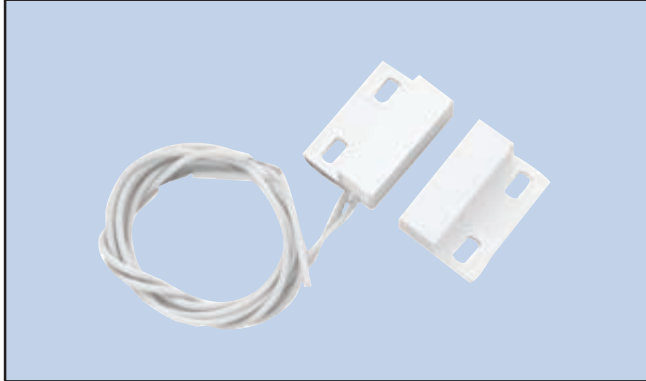
**Contact Rating:** 10W/VA  
**Contact Resistance:** 150 milliohms.  
**Contact Material:** Ruthenium Oxide over Palladium  
**Switching Voltage:** 200 VDC max.  
**Switching Current:** 500mA max.  
**Insulation Resistance:** 10 gigohms  
**Shock Resistance:** 30G for 11mS  
**Vibration Resistance:** 20G (10 to 1000Hz)  
**Life Expectancy:** 20,000,000 cycles (resistive load, 12VDC, 250mA)  
**Operating Gap:** .748" (19mm) min.  
**Terminal Type:** Wire Leads  
**Mounting Hole:** .375" (9mm)

# Magnetic Alarm Switches

## Reed Switch

### Features

- Mini Stick-On Surface Mount Contact with Side Leads
- 18" Long Side Wire Leads
- Adhesive & Screw Mounting
- Operating Gap\*: 3/4" (19mm) min.

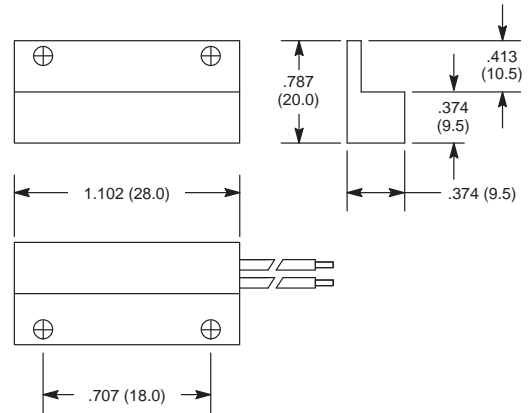


NTE Type No.	Circuitry	Action	Actuator	Diag No.
54-632	SPST-NO	NO for Closed Loop System	Magnet	S103

NOTE: The circuit is open when the magnet is not present.

\* The operating gap is the maximum distance that the magnet can be from the switch before operation is released.

### S103



## Specifications

**Contact Rating:** 10W/VA

**Contact Resistance:** 150 milliohms.

**Contact Material:** Ruthenium Oxide over Palladium

**Switching Voltage:** 200 VDC max.

**Switching Current:** 500mA max.

**Insulation Resistance:** 10 gigohms

**Shock Resistance:** 30G for 11mS

**Vibration Resistance:** 20G (10 to 1000Hz)

**Life Expectancy:** 20,000,000 cycles (resistive load, 12VDC, 250mA)

**Operating Gap:** .748" (19mm) min.

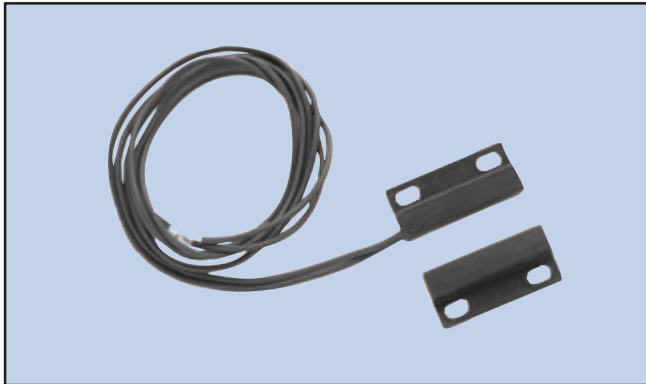
**Terminal Type:** Wire Leads

**Mounting Hole:** .250" (6.35mm)

## Reed Switch

### Features

- Mini Stick-On Contact with Flange Center Leads
- 18" Leads
- Adhesive and Screw Mount
- Operating Gap\*: 1" (25mm)

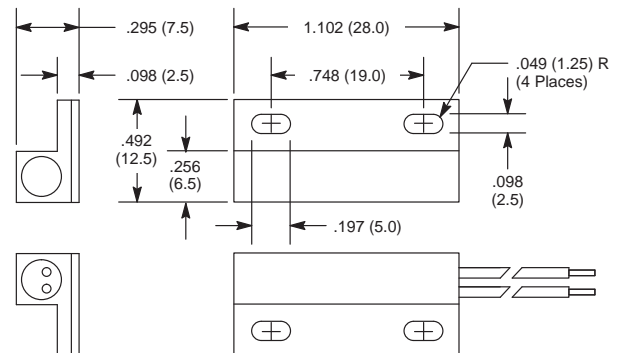


NTE Type No.	Color	Circuitry	Action	Actuator	Diag No.
54-630	White	SPST-NO	NO for Closed Loop System	Magnet	S107
54-636	Brown	SPST-NO	NO for Closed Loop System	Magnet	S107
54-637	Black	SPST-NO	NO for Closed Loop System	Magnet	S107

NOTE: The circuit is open when the magnet is not present.

\* The operating gap is the maximum distance that the magnet can be from the switch before operation is released.

### S107



## Specifications

**Contact Rating:** 10W/VA

**Contact Resistance:** 150 milliohms.

**Contact Material:** Ruthenium Oxide over Palladium

**Switching Voltage:** 200 VDC max.

**Switching Current:** 500mA max.

**Insulation Resistance:** 10 gigohms

**Shock Resistance:** 30G for 11mS

**Vibration Resistance:** 20G (10 to 1000Hz)

**Life Expectancy:** 20,000,000 cycles (resistive load, 12VDC, 250mA)

**Terminal Type:** Wire Leads

**Mounting Hole:** .200" (5mm)

# Magnetic Alarm Switches

## Roller Ball Switch

### Features

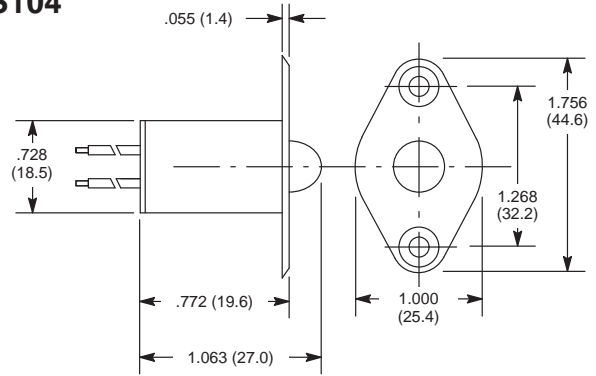
- 3/8" Dia with 18" Long Wire Leads
- Flange for Reliable Retention
- Suitable For Sliding as well as Swing Doors



NTE Type No.	Circuitry	Action	Actuator	Diag No.
54-633	SPST-NO	NO for Closed Loop System	Magnet	S104

NOTE: The circuit is open when the ball is not depressed.

### S104



### Specifications

**Contact Rating:** 10W/VA  
**Contact Resistance:** 150 milliohms.  
**Contact Material:** Ruthenium Oxide over Palladium  
**Switching Voltage:** 200 VDC max.  
**Switching Current:** 500mA max.  
**Insulation Resistance:** 10 gigohms  
**Shock Resistance:** 30G for 11mS  
**Vibration Resistance:** 20G (10 to 1000Hz)  
**Life Expectancy:** 20,000,000 cycles (resistive load, 12VDC, 250mA)  
**Terminal Type:** Wire Leads  
**Mounting Hole:** .375" (9mm)

## Panic Switch

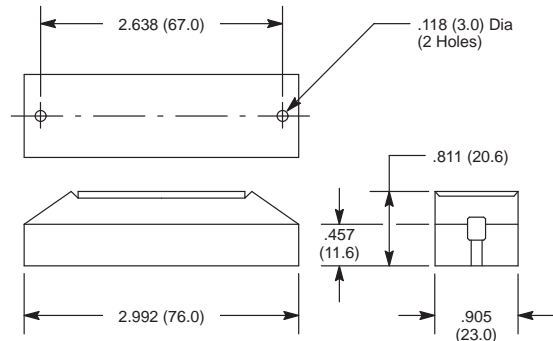
### Features

- Surface Mount Type
- Push Button Function
- Emergency Marking on the Button



NTE Type No.	Circuitry	Action	Actuator	Diag No.
54-634	SPST-NO	NO for Closed Loop System	Microswitch	S105

### S105



### Specifications

**Contact Rating:** 10W/VA  
**Contact Resistance:** 150 milliohms.  
**Contact Material:** Silver over Palladium  
**Switching Voltage:** 200 VDC max.  
**Switching Current:** 500mA max.  
**Insulation Resistance:** 10 gigohms  
**Shock Resistance:** 30G for 11mS  
**Vibration Resistance:** 20G (10 to 1000Hz)  
**Life Expectancy:** 20,000,000 cycles (resistive load, 12VDC, 250mA)  
**Terminal Type:** Y Type Tin Plated Brass

# Magnetic Alarm Switches

## Plunger Switch

### Features

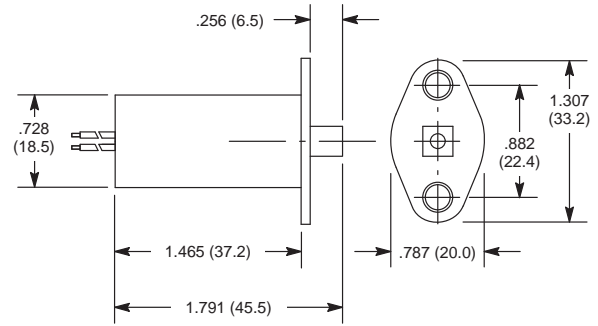
- 3/8" Dia Mounting Hole
- Flange for Reliable Retention
- 3mm Pre-Travel Stroke and 7mm Overall Operating Stroke
- 18" Long Wire Leads
- Screw Provided



NTE Type No.	Circuitry	Action	Actuator	Diag No.
54-635	SPST-NO	NO for Closed Loop System	Magnet	S106

NOTE: The circuit is open when the plunger is not depressed.

### S106



## Specifications

**Contact Rating:** 10W/VA

**Contact Resistance:** 150 milliohms.

**Contact Material:** Ruthenium Oxide over Palladium

**Switching Voltage:** 200 VDC max.

**Switching Current:** 500mA max.

**Insulation Resistance:** 10 gigohms

**Shock Resistance:** 30G for 11mS

**Vibration Resistance:** 20G (10 to 1000Hz)

**Life Expectancy:** 20,000,000 cycles (resistive load, 12VDC, 250mA)

**Terminal Type:** Wire Leads

**Mounting Hole:** .375" (9mm)