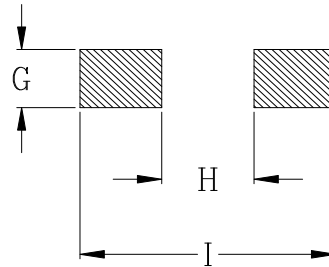
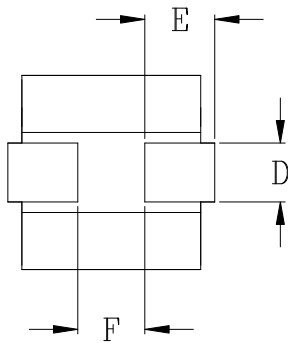
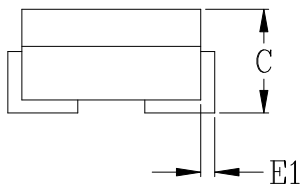
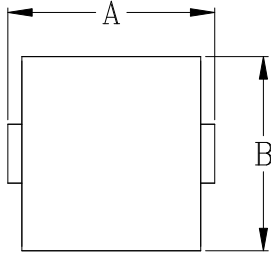




DELTA P/N : HCB444 Series

Mechanical Dimensions



PCB LAYOUT

Dimensions (Unit : mm)

A	4.0 MAX
B	4.0 MAX
C	4.0 MAX
D	1.2
E	1.3
E1	0~0.35
F	1.4
G	1.7
H	0.9
I	4.3

Electrical Characteristics @ 25°C, 100kHz, 1V

Delta P/N	L ¹ (nH)	Li (nH)MIN	DCR (mΩ)	Isat ² (A)			Ir ³ (A)
				25°C	100°C	125°C	
HCB444-500	50	34	0.32 ± 9%	29	26	21	19
HCB444-650	65	44		26	22	19	
HCB444-800	80	51		22	17	16	
HCB444-101	100	64		17	13	12	

1. Tolerance of inductance: ± 15% for 50nH & 65nH parts, ± 20% for 80nH & 100nH parts.
2. Isat is the DC current which causes the inductance drop not lower than Li.
3. Ir is the DC current which causes the surface temperature of the part increase approximately 40 °C.
4. Operation temperature: -40°C to 125°C (Self-temperature rise includes).