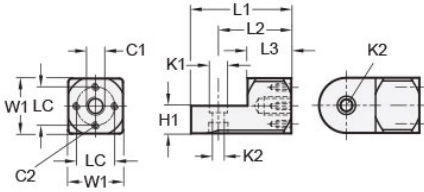




## MT20-SWMB-M8-AN

Ruland Swivel Mounting Block, Width/Height 30mm, Length 55mm, Black Anodized Aluminum



### Description

Ruland MT20-SWMB-M8-AN is an swivel mounting block with a M8 center thread, M4 cross threads, 15mm base height, 10mm recess diameter, 30mm width/height, and 55mm overall length. It is made of aluminum with a black anodized finish. Swivel mounting blocks are primarily designed to mount sensor and mounting brackets with the same width/height. In addition, this part can be combined with swivel and t-swivel clamp joints with the same width/height to make articulated swivel clamp mounting joints. Adjustable lever clamping kits with the same width/height can be attached to the swivel mounting block.

### Product Specifications

<b>Center Thread C1</b>	M8	<b>Cross Thread C2</b>	M4 x 4
<b>Counterbore 1 Diameter K1</b>	10 mm	<b>Counterbore 2 Diameter K2</b>	6.5 mm
<b>Width &amp; Height W1</b>	30 mm	<b>Base Height H1</b>	15 mm
<b>Center To Center LC</b>	20 mm	<b>Edge To Center Of Counterbore L2</b>	40 mm
<b>Overall Length L1</b>	55 mm	<b>Hub Length LH</b>	24 mm
<b>Material Specification</b>	Anodized Aluminum	<b>Manufacturer</b>	JW Winco/ Otto Ganter
<b>Country of Origin</b>	Germany	<b>Weight (lbs)</b>	0.184100
<b>UPC</b>	634529302354	<b>Tariff Code</b>	7609.00.0000
<b>UNSPC</b>	31162908		