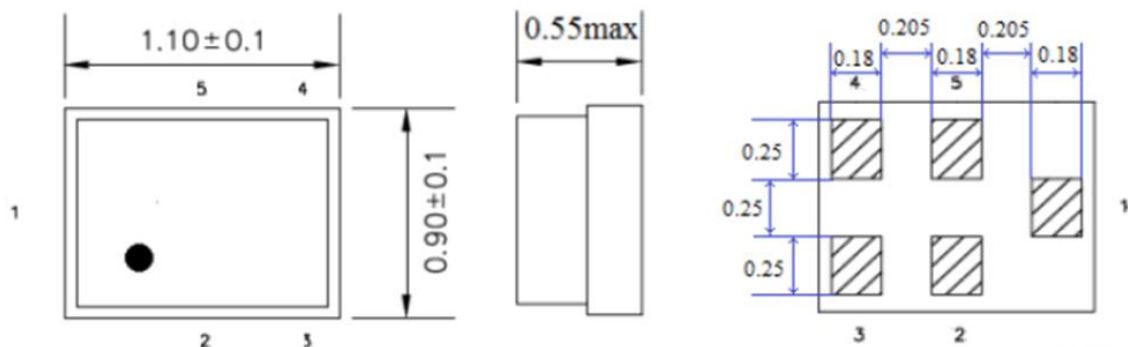


Electrical Specification

Parameters		Value	Unit
Center Frequency (Fo)		1900.000	MHz
Insertion Loss, typ/max	1880 MHz ~ 1920 MHz	2.8 / 3.3	dB
Pass Band Ripple, typ/max	1880 MHz ~ 1920 MHz	1.0 / 1.5	dB
VSWR, typ/max	1880 MHz ~ 1920 MHz	1.5 / 2.0	-
Amplitude Balance, min/typ/max	1880 MHz ~ 1920 MHz	-1.5 / 0.2 / +1.5	dB
Phase Balance, min/typ/max	1880 MHz ~ 1920 MHz	165 / 185 / 195	°
Absolute Attenuation, min/typ	10 MHz ~ 915 MHz	-55 / -65	dB
	915 MHz ~ 1710 MHz	-50 / -62	dB
	1710 MHz ~ 1785 MHz	-50 / -60	dB
	1785 MHz ~ 1830MHz	-30 / -58	dB
	1830 MHz ~ 1850 MHz	-8 / -25	dB
	1950 MHz ~ 2980 MHz	-12 / -25	dB
	1980 MHz ~ 2010 MHz	-30 / -43	dB
	2010 MHz ~ 2025 MHz	-30 / -45	dB
	2025 MHz ~ 2400 MHz	-30 / -50	dB
	2400 MHz ~ 2500 MHz	-50 / -70	dB
2500 MHz ~ 6000 MHz	-30 / -60	dB	
ESD voltage	EDS (MM)	50	VDC
Sensitive discharge device	ESD (HBM)	175	VDC
DC Voltage VDC		5	V
Input Power, max, 2000h		15	dBm
Terminating Impedance	Source	50 // 10	Ω // nH
	Load	100 // 22	Ω // nH
Impedance Transformation		50 to 100	Ω
Operating Temperature Range		-30 ~ 85	°C
Storage Temperature		-40 ~ 85	°C

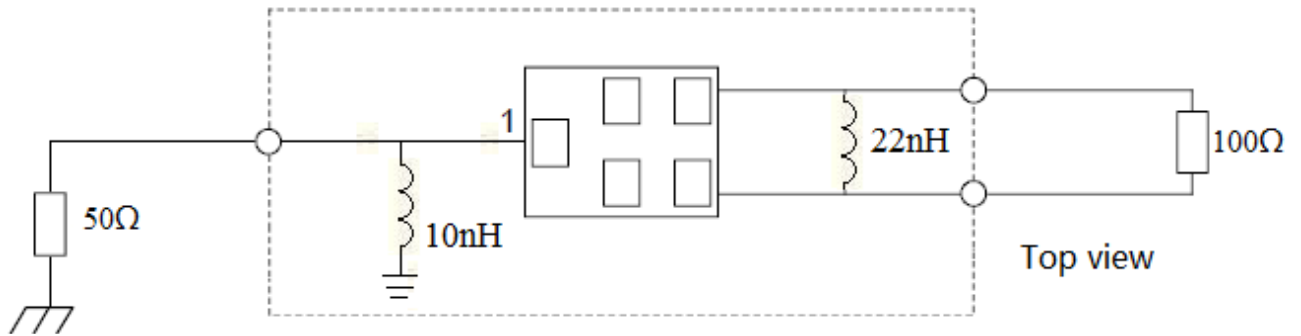
Dimension



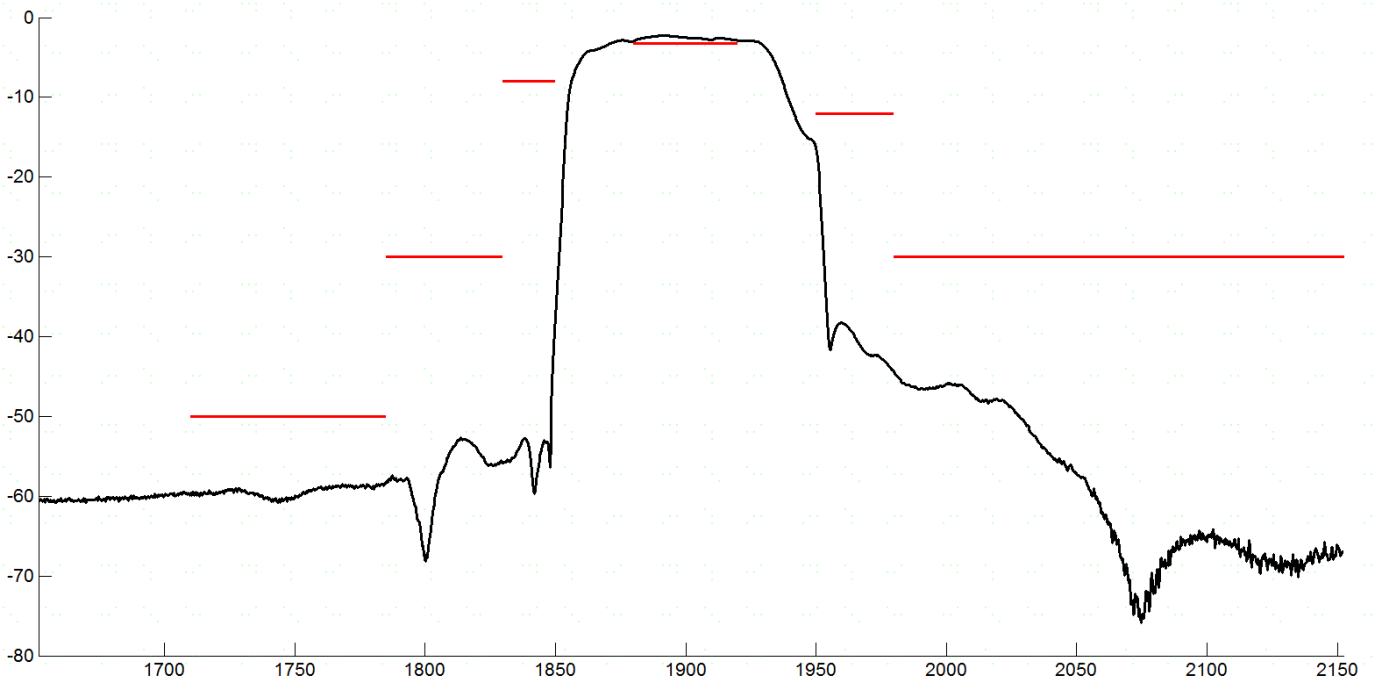
Unit: mm

PIN #	PIN NAME	DESCRIPTION
1	IN	Input
3, 4	OUT	Output
2, 5	GND	Ground

Test Circuit



Frequency Characteristics

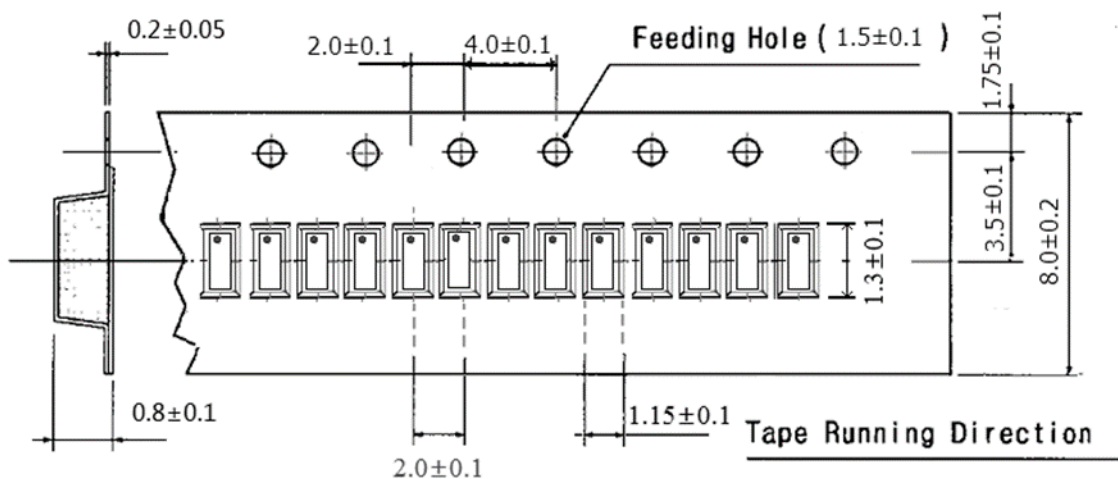


Environmental

PARAMETER	VALUE
MOISTURE SENSITIVITY LEVEL	2
REACH – SVHC	Compliant
RoHS	Compliant
PACKAGING	TAPE & REEL



Tape Dimension



APPROVAL

DRAWN BY	ZZ, August 12, 2021
APPROVED BY	AR, August 12, 2021
REVISION	A, Initial Release

Raltron Electronics / RAMI Technology USA, LLC, including its affiliates, employees, agents and other persons acting on its behalf (collectively Raltron/RAMI Tech), disclaim any and all liability for any errors or inaccuracies contained in this data sheet. While Raltron/RAMI Tech has made every reasonable effort ensure the accuracy of all product information, specifications and data contained herein, Raltron/RAMI Tech does not guarantee that the information is accurate, reliable or current. The product information is provided only for reference purposes only and is subject to change, correction or revision, at any time without notice. Raltron/RAMI Tech does not assume any liability arising out of an application or use of any product described herein and disclaims any warranties expressed or implied. The user of products in such applications shall assume all risks of such use and will agree to hold Raltron/RAMI Tech harmless against all damages.

Copyright © 2016, Raltron Electronics / RAMI Technology USA, LLC. All rights reserved. No part of this document may be reproduced in any form without the prior written permission of Raltron Electronics / RAMI Technology USA, LLC.