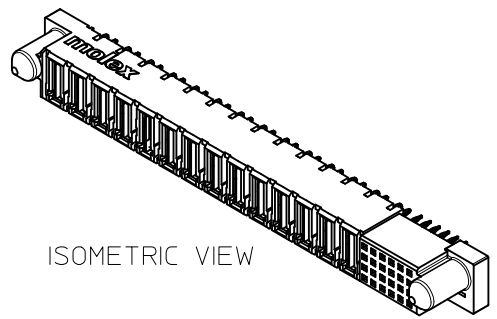
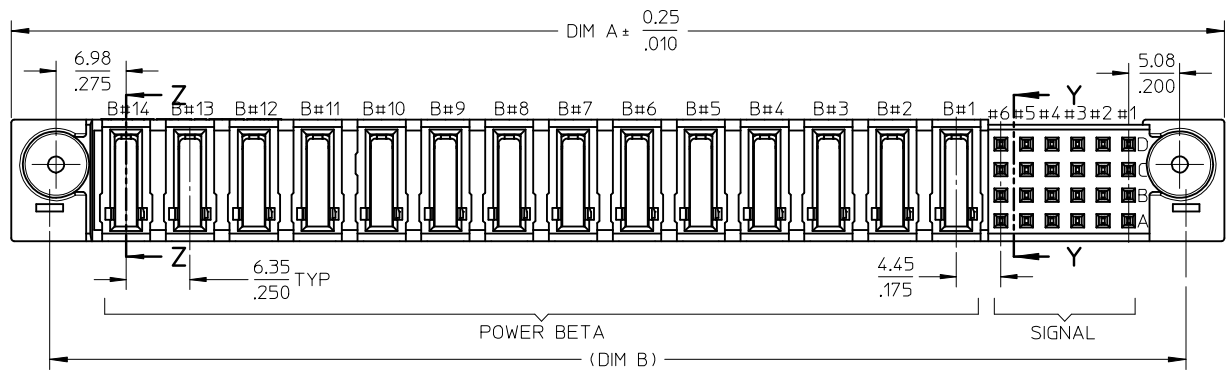
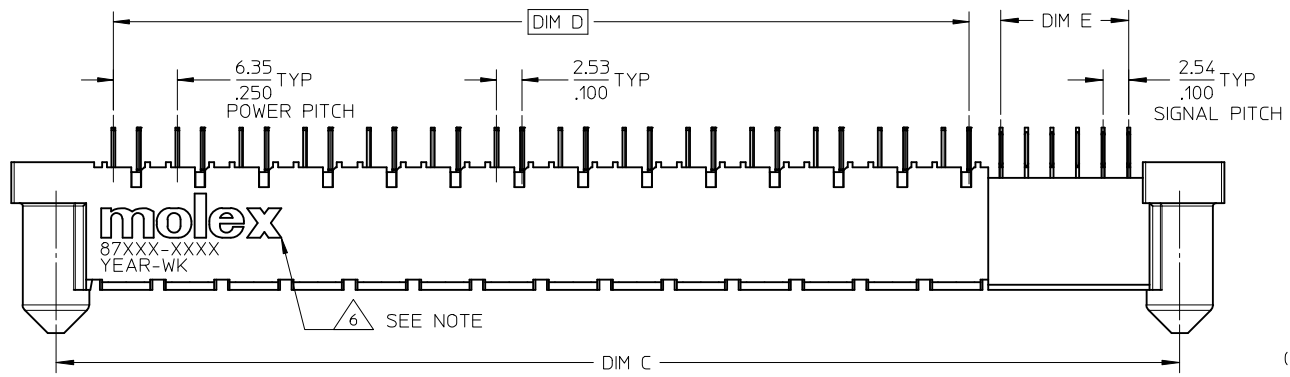
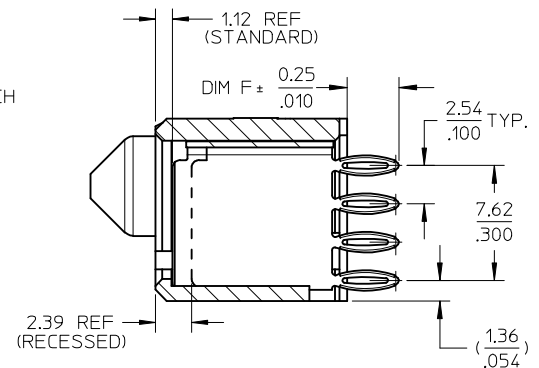


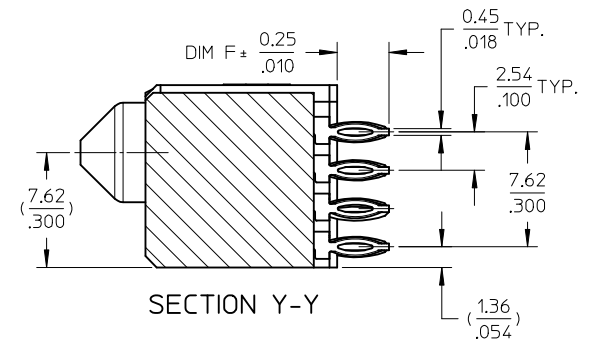
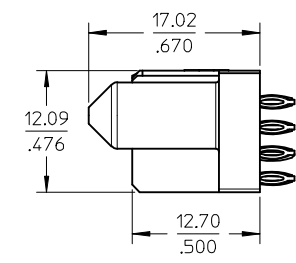
10 9 8 7 6 5 4 3 2 1



ISOMETRIC VIEW



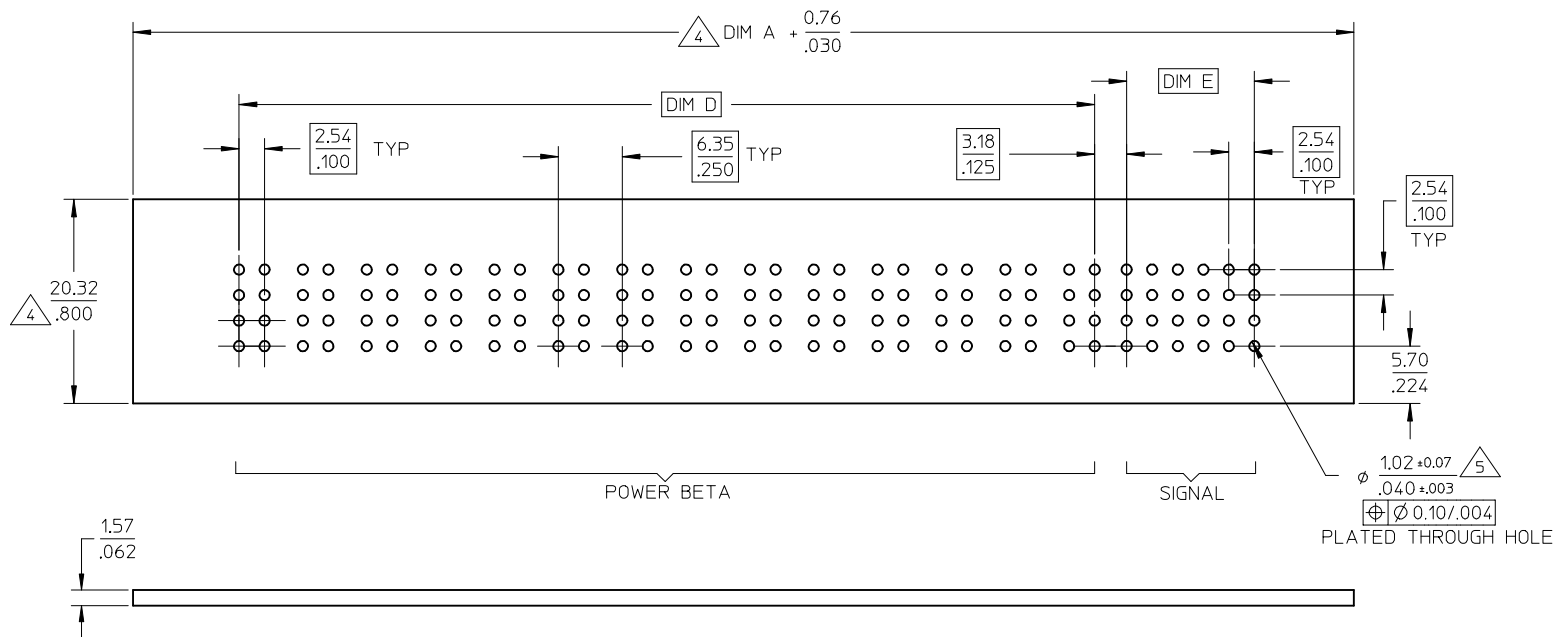
SECTION Z-Z



SECTION Y-Y

<b>REVISED</b> IEC NO: S2014-0060 DRW:SKANG 2013/07/16 CH:KD:MLONG 2013/09/06 APPR:MLONG 2013/09/09	QUALITY SYMBOLS $F_A=0$ $F_G=0$ $F_B=0$	GENERAL TOLERANCES (UNLESS SPECIFIED)		DIMENSION STYLE <b>MM/IN</b>		SCALE NTS	DESIGN UNITS METRIC	THIRD ANGLE PROJECTION
			mm	INCH	DRAWN BY	DATE	TITLE	
		4 PLACES	± ---	± ---	KMGOH	2002/10/10	POWER CONN. RECEPTACLE S-P(B) CONFIGURATION VERTICAL PRESS-FIT <b>molex</b>	
		3 PLACES	± ---	± .010	CHECKED BY	DATE		
2 PLACES	± 0.25	± ---	PTLIM	2002/11/25				
1 PLACE	± ---	± ---	APPROVED BY	DATE				
0 PLACE	± ---	± ---	SKTOH	2002/11/26				
		ANGULAR ± 3°		MATERIAL NO.	DOCUMENT NO.			
		DRAFT WHERE APPLICABLE MUST REMAIN WITHIN DIMENSIONS		SEE TABLE		SD-87710-011		
				SIZE A3	THIS DRAWING CONTAINS INFORMATION THAT IS PROPRIETARY TO MOLEX INCORPORATED AND SHOULD NOT BE USED WITHOUT WRITTEN PERMISSION			

9 8 7 6 5 4 3 2 1



RECOMMENDED PCB LAYOUT

CONNECTOR - NOTES

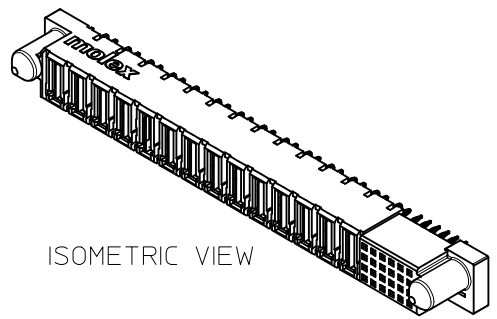
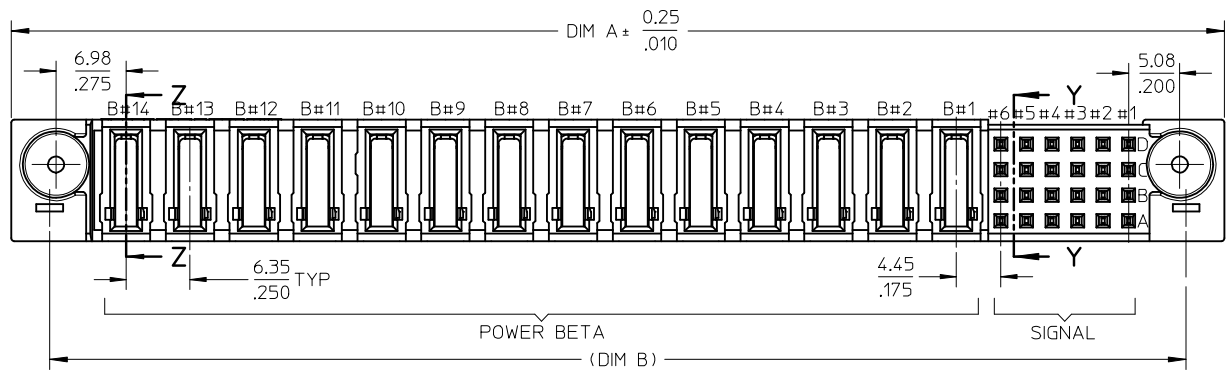
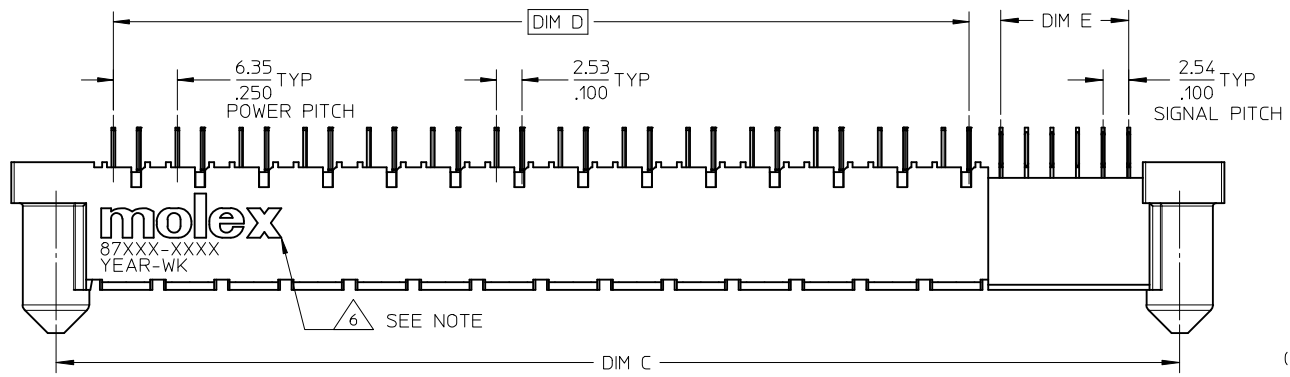
1. MATERIALS :
  - HOUSING - LCP, GLASS FILLED, UL94-0,COLOR:BLACK.
  - SIGNAL PIN - COPPER ALLOY
  - POWER PIN - COPPER ALLOY
2. FINISH :
  - SIGNAL & POWER CONTACTS
  - 0.76 MICROMETER MINIMUM GOLD (Au) AT CONTACT AREA AND
  - 2.54 MICROMETER MINIMUM TIN (Sn) AT SOLDER TAIL AREA
  - OVER 1.27um MIN. NICKEL (Ni) UNDERPLATE.
3. PRODUCT SPECIFICATION: PS-87633-006.
4. COMPONENT STAY AWAY ZONE FROM CONNECTOR.
5. PCB NOTE FOR DIAMETER 1.02/0.40 PLATED HOLE.
  - DRILLED HOLE SIZE IS 1.151/0.453
  - PLATE WITH 0.007/0.003 MINIMUM TIN OVER 0.03/0.001 TO 0.08/0.003 COPPER PLATING TO ACHIEVE 1.02+0.08/0.40+0.003 HOLE. SEE SHEET 2 FOR RECOMMENDED PCB LAYOUT.
6. MANUFACTURER LOGO,PART NUMBER AND YEAR-WEEK CODE.
7. 14 POWER BETA-24 SIGNAL CONFIGURATION IS SHOWN FOR ILLUSTRATION ONLY.

REVISED EC NO: S2014-0060 DRWN:SKANG 2013/07/16 CHKD:MLONG 2013/09/06 APPR:MLONG 2013/09/09	DESCRIPTION REV	QUALITY SYMBOLS		GENERAL TOLERANCES (UNLESS SPECIFIED)		DIMENSION STYLE		SCALE	DESIGN UNITS	THIRD ANGLE PROJECTION	
						MM/IN		NTS	METRIC		
						DRAWN BY DATE		TITLE			
						CHECKED BY DATE		POWER CONN. RECEPTACLE S-P(B) CONFIGURATION VERTICAL PRESS-FIT			
				APPROVED BY DATE							
				MATERIAL NO.						DOCUMENT NO. SD-87710-011	
				ANGULAR ± 3 °		SEE TABLE				SHEET NO. 2 OF 3	
				DRAFT WHERE APPLICABLE MUST REMAIN WITHIN DIMENSIONS		SIZE A3		THIS DRAWING CONTAINS INFORMATION THAT IS PROPRIETARY TO MOLEX INCORPORATED AND SHOULD NOT BE USED WITHOUT WRITTEN PERMISSION			

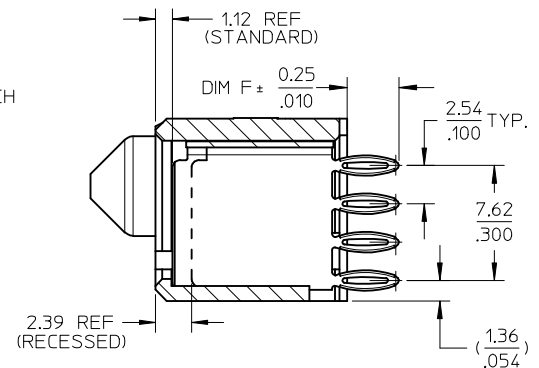
PART NUMBER	P-S CONFIGURATION		RECESS POWER CIRCUIT #	DIM A	DIM B	DIM C	DIM D	DIM E	DIM F +0.25	PACKAGING
	POWER BETA	SIGNAL								
87710-2001	14	24	NIL	$\frac{120.65}{4.750}$	$\frac{113.03}{4.450}$	$\frac{111.76}{4.400}$	$\frac{85.09}{3.350}$	$\frac{12.70}{.500}$	$\frac{3.43}{.135}$	TRAY
87710-2002	6	24	NIL	$\frac{69.85}{2.750}$	$\frac{62.23}{2.450}$	$\frac{60.96}{2.400}$	$\frac{34.29}{1.350}$	$\frac{12.70}{.500}$	$\frac{3.43}{.135}$	TRAY
87710-2003	6	24	B4,B5,B6	$\frac{69.85}{2.750}$	$\frac{62.23}{2.450}$	$\frac{60.96}{2.400}$	$\frac{34.29}{1.350}$	$\frac{12.70}{.500}$	$\frac{3.43}{.135}$	TRAY
87710-2005	10	24	NIL	$\frac{95.25}{3.750}$	$\frac{87.63}{3.450}$	$\frac{86.36}{3.400}$	$\frac{59.69}{2.350}$	$\frac{12.70}{.500}$	$\frac{3.43}{.135}$	TRAY
87710-2011	4	16	NIL	$\frac{52.07}{2.050}$	$\frac{44.45}{1.750}$	$\frac{43.18}{1.700}$	$\frac{21.59}{.850}$	$\frac{7.62}{.300}$	$\frac{3.43}{.135}$	TRAY
87710-2012	4	24	NIL	$\frac{57.15}{2.250}$	$\frac{49.53}{1.950}$	$\frac{48.26}{1.900}$	$\frac{21.59}{.850}$	$\frac{12.70}{.500}$	$\frac{3.43}{.135}$	TRAY

<b>REVISED</b> EC NO: SZ014-0060 DRWN:SKANG 2013/07/16 CHKD:MLONG 2013/09/06 APPR:MLONG 2013/09/09	QUALITY SYMBOLS	GENERAL TOLERANCES (UNLESS SPECIFIED)	DIMENSION STYLE	SCALE	DESIGN UNITS	THIRD ANGLE PROJECTION																	
	$\nabla_F=0$ $\nabla_{F'}=0$ $\nabla_{F''}=0$	<table border="1"> <tr> <th></th> <th>mm</th> <th>INCH</th> </tr> <tr> <td>4 PLACES</td> <td>± ---</td> <td>± ---</td> </tr> <tr> <td>3 PLACES</td> <td>± ---</td> <td>± .010</td> </tr> <tr> <td>2 PLACES</td> <td>± 0.25</td> <td>± ---</td> </tr> <tr> <td>1 PLACE</td> <td>± ---</td> <td>± ---</td> </tr> <tr> <td>0 PLACE</td> <td>±</td> <td>±</td> </tr> </table>		mm	INCH		4 PLACES	± ---	± ---	3 PLACES	± ---	± .010	2 PLACES	± 0.25	± ---	1 PLACE	± ---	± ---	0 PLACE	±	±	MM/IN	NTS
		mm	INCH																				
	4 PLACES	± ---	± ---																				
3 PLACES	± ---	± .010																					
2 PLACES	± 0.25	± ---																					
1 PLACE	± ---	± ---																					
0 PLACE	±	±																					
REV	DESCRIPTION	DRAWN BY: KMGH CHECKED BY: PTLIM APPROVED BY: SKTOH DATE: 2002/10/10 DATE: 2002/11/25 DATE: 2002/11/26	TITLE	<b>POWER CONN. RECEPTACLE          S-P(B) CONFIGURATION          VERTICAL PRESS-FIT</b>																			
D1		ANGULAR ± 3 ° DRAFT WHERE APPLICABLE MUST REMAIN WITHIN DIMENSIONS	MATERIAL NO. <b>SEE TABLE</b>	DOCUMENT NO. <b>SD-87710-011</b>	SHEET NO. <b>3 OF 3</b>																		

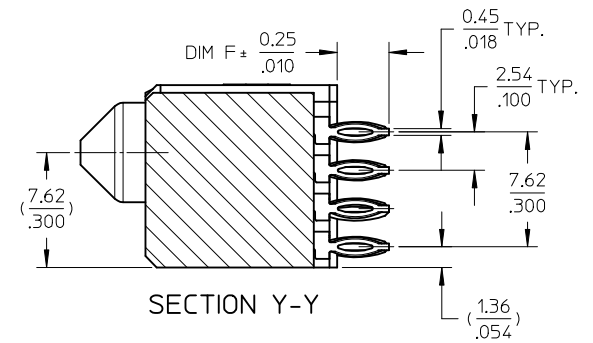
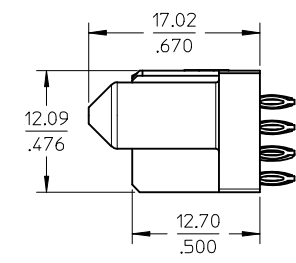
10 9 8 7 6 5 4 3 2 1



ISOMETRIC VIEW



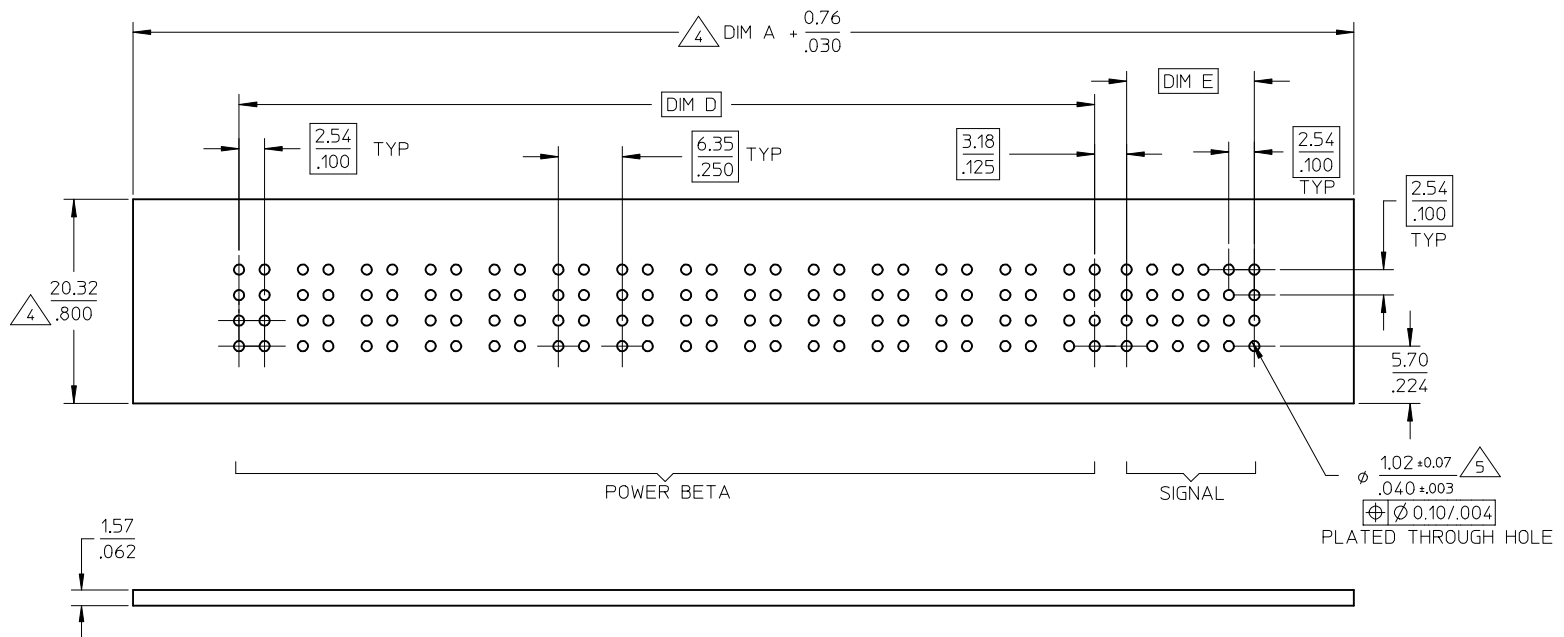
SECTION Z-Z



SECTION Y-Y

REVISED IEC NO: S2014-0060 DRW:SKANG 2013/07/16 CH:KD:MLONG 2013/09/06 APPR:MLONG 2013/09/09	QUALITY SYMBOLS $F_A=0$ $F_G=0$ $F_B=0$	GENERAL TOLERANCES (UNLESS SPECIFIED)		DIMENSION STYLE MM/IN		SCALE NTS	DESIGN UNITS METRIC	THIRD ANGLE PROJECTION
			mm	INCH	DRAWN BY	DATE	TITLE	
		4 PLACES	± ---	± ---	KMGOH	2002/10/10	POWER CONN. RECEPTACLE	
		3 PLACES	± ---	± .010	CHECKED BY	DATE	S-P(B) CONFIGURATION	
	2 PLACES	± 0.25	± ---	PTLIM	2002/11/25	VERTICAL PRESS-FIT	<b>molex</b>	
	1 PLACE	± ---	± ---	APPROVED BY	DATE			
	0 PLACE	± ---	± ---	SKTOH	2002/11/26			
		ANGULAR ± 3°		MATERIAL NO.	DOCUMENT NO.		SHEET NO.	
		DRAFT WHERE APPLICABLE MUST REMAIN WITHIN DIMENSIONS		SEE TABLE		SD-87710-011		1 OF 3
D1	REV			SIZE A3	THIS DRAWING CONTAINS INFORMATION THAT IS PROPRIETARY TO MOLEX INCORPORATED AND SHOULD NOT BE USED WITHOUT WRITTEN PERMISSION			

9 8 7 6 5 4 3 2 1



RECOMMENDED PCB LAYOUT

CONNECTOR - NOTES

1. MATERIALS :
  - HOUSING - LCP, GLASS FILLED, UL94-0,COLOR:BLACK.
  - SIGNAL PIN - COPPER ALLOY
  - POWER PIN - COPPER ALLOY
2. FINISH :
  - SIGNAL & POWER CONTACTS
  - 0.76 MICROMETER MINIMUM GOLD (Au) AT CONTACT AREA AND
  - 2.54 MICROMETER MINIMUM TIN (Sn) AT SOLDER TAIL AREA
  - OVER 1.27um MIN. NICKEL (Ni) UNDERPLATE.
3. PRODUCT SPECIFICATION: PS-87633-006.
4. COMPONENT STAY AWAY ZONE FROM CONNECTOR.
5. PCB NOTE FOR DIAMETER 1.02/.040 PLATED HOLE.
  - DRILLED HOLE SIZE IS 1.151/.0453
  - PLATE WITH 0.007/.0003 MINIMUM TIN OVER 0.03/.001 TO 0.08/.003 COPPER PLATING TO ACHIEVE 1.02±0.08/.040±.003 HOLE. SEE SHEET 2 FOR RECOMMENDED PCB LAYOUT.
6. MANUFACTURER LOGO,PART NUMBER AND YEAR-WEEK CODE.
7. 14 POWER BETA-24 SIGNAL CONFIGURATION IS SHOWN FOR ILLUSTRATION ONLY.

REVISED EC NO: S2014-0060 DRWN:SKANG 2013/07/16 CHKD:MLONG 2013/09/06 APPR:MLONG 2013/09/09	DESCRIPTION REV	QUALITY SYMBOLS		GENERAL TOLERANCES (UNLESS SPECIFIED)		DIMENSION STYLE		SCALE	DESIGN UNITS	THIRD ANGLE PROJECTION	
						MM/IN		NTS	METRIC		
						DRAWN BY DATE		TITLE			
						CHECKED BY DATE		POWER CONN. RECEPTACLE S-P(B) CONFIGURATION VERTICAL PRESS-FIT			
				APPROVED BY DATE		<b>molex</b>					
				MATERIAL NO. DOCUMENT NO.						SD-87710-011	
				DRAFT WHERE APPLICABLE MUST REMAIN WITHIN DIMENSIONS		SEE TABLE		SHEET NO.		2 OF 3	
				ANGULAR ± 3 °		SIZE A3		THIS DRAWING CONTAINS INFORMATION THAT IS PROPRIETARY TO MOLEX INCORPORATED AND SHOULD NOT BE USED WITHOUT WRITTEN PERMISSION			

PART NUMBER	P-S CONFIGURATION		RECESS POWER CIRCUIT #	DIM A	DIM B	DIM C	DIM D	DIM E	DIM F +0.25	PACKAGING
	POWER BETA	SIGNAL								
87710-2001	14	24	NIL	$\frac{120.65}{4.750}$	$\frac{113.03}{4.450}$	$\frac{111.76}{4.400}$	$\frac{85.09}{3.350}$	$\frac{12.70}{.500}$	$\frac{3.43}{.135}$	TRAY
87710-2002	6	24	NIL	$\frac{69.85}{2.750}$	$\frac{62.23}{2.450}$	$\frac{60.96}{2.400}$	$\frac{34.29}{1.350}$	$\frac{12.70}{.500}$	$\frac{3.43}{.135}$	TRAY
87710-2003	6	24	B4,B5,B6	$\frac{69.85}{2.750}$	$\frac{62.23}{2.450}$	$\frac{60.96}{2.400}$	$\frac{34.29}{1.350}$	$\frac{12.70}{.500}$	$\frac{3.43}{.135}$	TRAY
87710-2005	10	24	NIL	$\frac{95.25}{3.750}$	$\frac{87.63}{3.450}$	$\frac{86.36}{3.400}$	$\frac{59.69}{2.350}$	$\frac{12.70}{.500}$	$\frac{3.43}{.135}$	TRAY
87710-2011	4	16	NIL	$\frac{52.07}{2.050}$	$\frac{44.45}{1.750}$	$\frac{43.18}{1.700}$	$\frac{21.59}{.850}$	$\frac{7.62}{.300}$	$\frac{3.43}{.135}$	TRAY
87710-2012	4	24	NIL	$\frac{57.15}{2.250}$	$\frac{49.53}{1.950}$	$\frac{48.26}{1.900}$	$\frac{21.59}{.850}$	$\frac{12.70}{.500}$	$\frac{3.43}{.135}$	TRAY

<b>REVISED</b> EC NO: SZ014-0060 DRWN:SKANG 2013/07/16 CHKD:MLONG 2013/09/06 APPR:MLONG 2013/09/09	QUALITY SYMBOLS $\nabla_F=0$ $\nabla_F=0$ $\nabla_F=0$	GENERAL TOLERANCES (UNLESS SPECIFIED)		DIMENSION STYLE <b>MM/IN</b>		SCALE <b>NTS</b>	DESIGN UNITS <b>METRIC</b>	THIRD ANGLE PROJECTION		
				mm	INCH	DRAWN BY KMGH	DATE 2002/10/10	TITLE <b>POWER CONN. RECEPTACLE S-P(B) CONFIGURATION VERTICAL PRESS-FIT</b>		
		4 PLACES	± ---	± ---		CHECKED BY PTLIM	DATE 2002/11/25			
		3 PLACES	± ---	± .010		APPROVED BY SKTOH	DATE 2002/11/26	MATERIAL NO.		DOCUMENT NO.
2 PLACES	± 0.25	± ---		DRAFT WHERE APPLICABLE MUST REMAIN WITHIN DIMENSIONS		<b>SEE TABLE</b>		<b>SD-87710-011</b>		
1 PLACE	± ---	± ---				SIZE <b>A3</b>		THIS DRAWING CONTAINS INFORMATION THAT IS PROPRIETARY TO MOLEX INCORPORATED AND SHOULD NOT BE USED WITHOUT WRITTEN PERMISSION		
0 PLACE	±	±		ANGULAR ± 3 °						