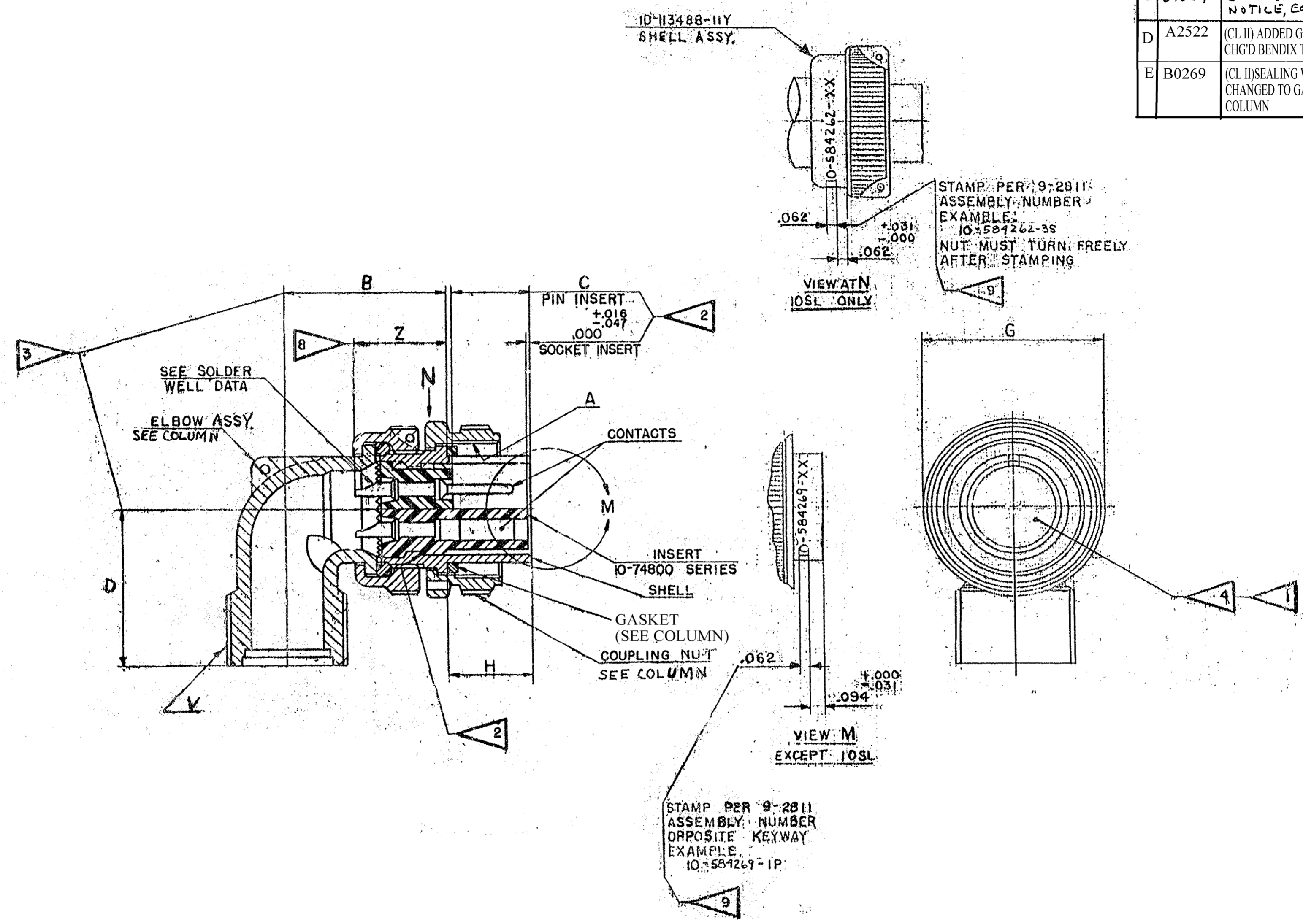


REV.	DATE	BY	APP.
A			
B	8/29/75	JED	JED
C	2-9-00	JED	JED
D	10-23-09	JONES	
E	12-20-11	JONES	



STAMP PER 9-2811  
ASSEMBLY NUMBER  
EXAMPLE:  
10-584262-3S  
NUT MUST TURN FREELY  
AFTER STAMPING

STAMP PER 9-2811  
ASSEMBLY NUMBER  
OPPOSITE KEYWAY  
EXAMPLE:  
10-584269-1P

10-584260 THRU  
10-584279  
SHEET 1 OF 2

USE OF THIS DOCUMENT IS UNLIMITED. DOCUMENTS REFERENCED HEREON CONTAIN LIMITED RIGHTS DATA.

SOLDER WELL DATA						
CONTACT SIZE	0	4	8	12	16	16M
WELL DIA	469 $\pm$ .003	332 $\pm$ .003	209 $\pm$ .004	116 $\pm$ .004	078 $\pm$ .004	078 $\pm$ .004
WELL DEPTH	$\pm$ .031 -.000	.625	.500	.250	.188	.188
SOLDER WELLS ARE FILLED WITH 50-50 TIN-LEAD SOLDER						
MATERIAL SPEC.	PROCESS SPEC. SEE SHEET 2.	AMPHENOL CORPORATION 40-60 DELAWARE AVENUE SIDNEY, NEW YORK			TOLERANCES UNLESS OTHERWISE SPECIFIED DECIMALS $\pm$ .010	
MEAS. TREAT SPEC.	FINISH SPEC.	NAME CONNECTOR, ELECTRICAL PLUG, TYPE SC( ) MC, 90° SPECIAL BLACK ZINC ALLOY PLATE			NEXT ASSEMBLY WEIGHT SEE PARTS LIST	
D'MAN		CHECKER	MAT.	ST'OS	CH. D'MAN	APPROVED
ALGER		JED				6-16-74
5-31-74		6-16-74				NONE
SCALE		SUPERSEDED BY		SCALE		
NONE				NONE		

NOTES:  
SEE SHEET 2

