

TABLE 1

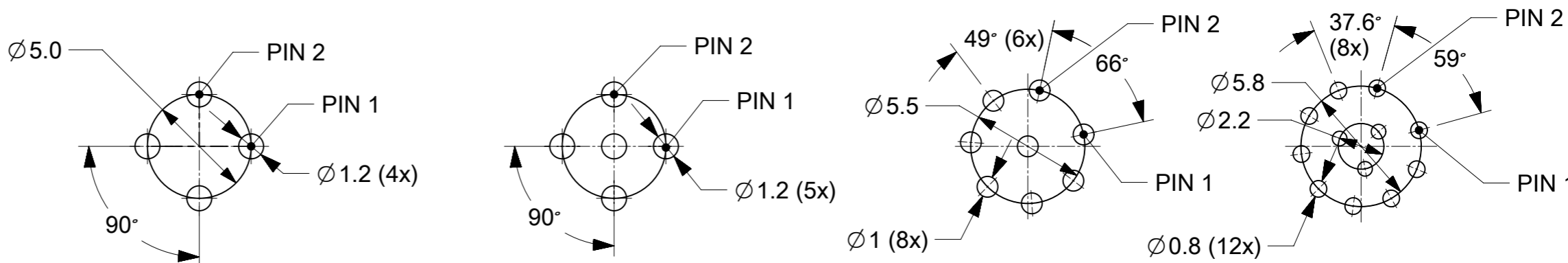
ITEM	QTY.	COMPONENT	MATERIAL	FINISH
1	1	REC SHELL MALE	BRASS	NICKEL PLATED
2	1	INSERT	PA	BLACK
3	4/5/8/12	PIN CONTACT 0.6mm	BRASS	CuZn Ni/Au
4	1	LOCKNUT	BRASS	Ni PLATED
5	1	O-RING 16x1.5	EPDM	BLACK
6	1	O-RING 7.1x1.35	VITON	RED
7	-	POTTING MATERIAL	EPOXY	NONE

THIS DRAWING CONTAINS INFORMATION THAT IS PROPRIETARY TO MOLEX ELECTRONIC TECHNOLOGIES, LLC AND SHOULD NOT BE USED WITHOUT WRITTEN PERMISSION

EC NO: 169742 DRWN: RSILLER CHK'D: APPR: RSILLER	2017/12/21	2017/12/21	GENERAL TOLERANCES (UNLESS SPECIFIED)	DIMENSION UNITS	SCALE	
			ANGULAR TOL ± 1.0 °	mm	2:1	
	4 PLACES ±		3 PLACES ±	SSM	DATE 2017/09/27	
	2 PLACES ± 0.05		1 PLACE ± 0.1	CHK'D BY	DATE	
		0 PLACES ±	RSILLER	DATE 2017/12/06		
DRAFT WHERE APPLICABLE MUST REMAIN WITHIN DIMENSIONS			DRAWING SIZE	THIRD ANGLE PROJECTION		SERIES 120084 MATERIAL NUMBER SEE TABLE 2 CUSTOMER GENERAL MARKET
A1	REV		A3			DOCUMENT NUMBER 1200845175 DOC TYPE PSD DOC PART 000 SHEET NUMBER 1 OF 2

TABLE 3

MATERIAL-NO.	1200845175	1200845179	1200840048	1200845176
ENG-NO.	WR4W400003	WR5W400003	WR8W400003	WRCW400003
LAYOUT				
VOLTAGE RATING	250V	60V	30V	30V
AC/DC CODING	A - Code	A - Code	A - Code	A - Code
AMPERE RATING	4A	4A	2A	1.5A
PROTECTION CLASS CONNECTOR INTERFACE SHELL TO ENCLOSURE	IP67/69K (in mated condition / when properly installed)			
OPERATING TEMP.	-25°C / 85°C			
UL CERTIFICATION	FILE NO. E152210			
CSA CERTIFICATION	FILE NO. LR6837			
PIN DIAMETER	1.0 mm	1.0 mm	0.8 mm	0.6 mm



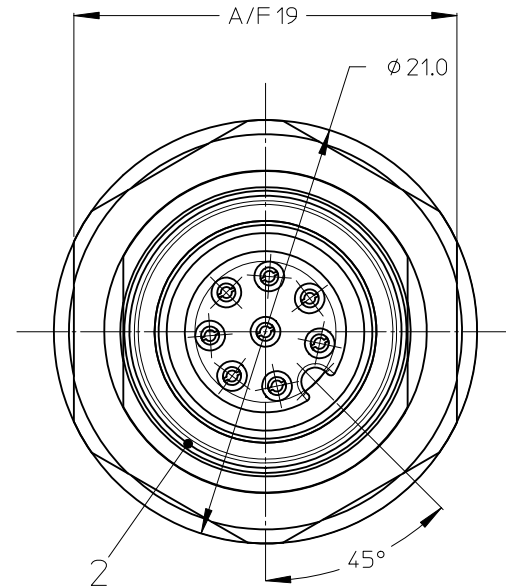
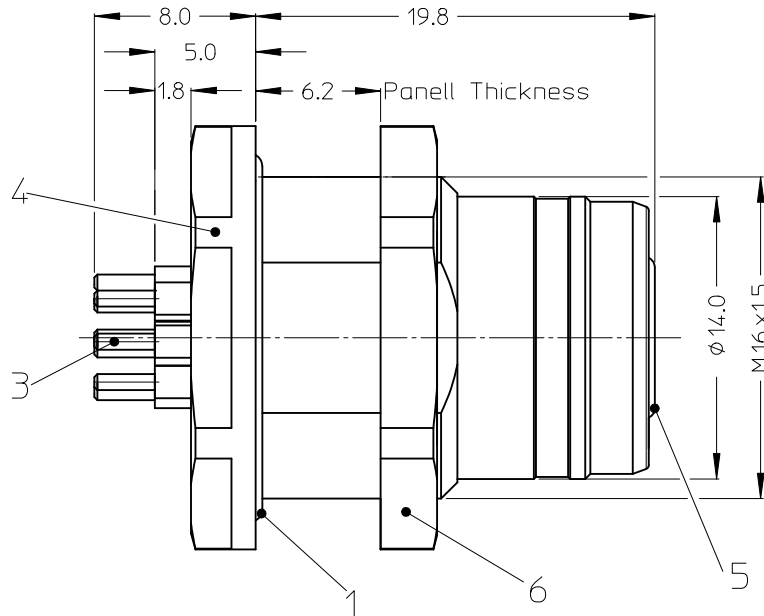
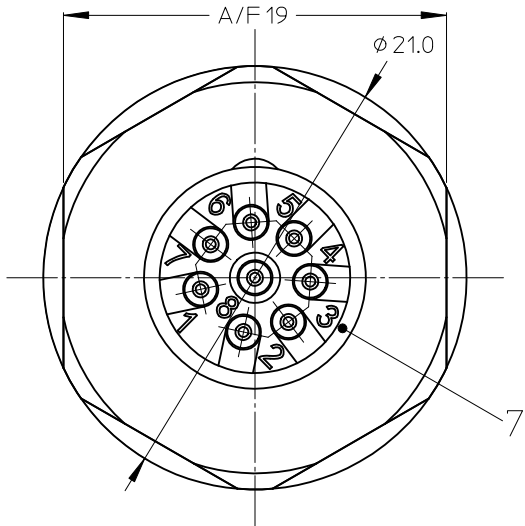
**DRILL LAYOUT BACKSIDE**

TABLE 2

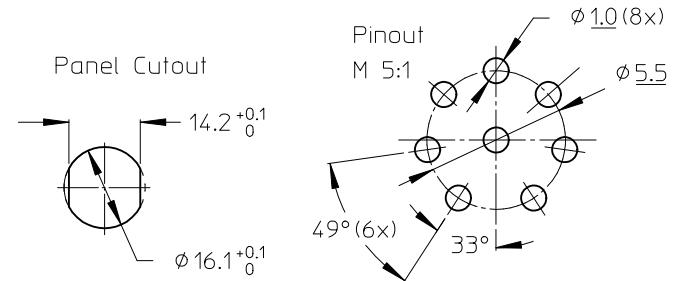
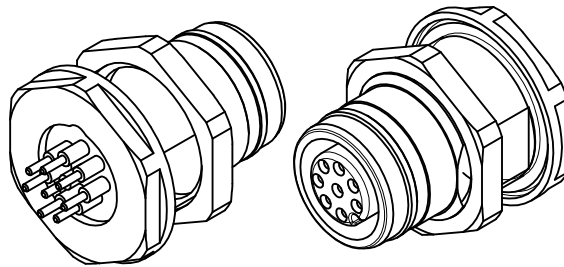
MOLEX P/N	ENGINEERING NR.	DESCRIPTION
1200845175	WR4W400003	REC U12 4P AC FE M16 BM SOL BRA AU
1200845179	WR5W400003	REC U12 5P AC FE M16 BM SOL BRA AU
1200840048	WR8W400003	REC U12 8P AC FE M16 BM SOL BRA AU
1200845176	WRCW400003	REC U12 12P AC FE M16 BM SOL BRA AU

THIS DRAWING CONTAINS INFORMATION THAT IS PROPRIETARY TO MOLEX ELECTRONIC TECHNOLOGIES, LLC AND SHOULD NOT BE USED WITHOUT WRITTEN PERMISSION

2017/12/21	2017/12/21	GENERAL TOLERANCES (UNLESS SPECIFIED)	DIMENSION UNITS	SCALE	<b>molex</b> <sup>®</sup>
		mm	2:1		
EC NO: 169742 DRWN: RSILLER CHK'D: REV APPR: RSILLER	2017/12/21	ANGULAR TOL ± 1.0 °	DRWN BY	DATE	REC U12 XP AC FE M16 BM SOL BRA AU
		4 PLACES ±	SSM	2017/09/27	
		3 PLACES ±	CHK'D BY	DATE	
		2 PLACES ± 0.05	CHKD BY	DATE	
1 PLACE ± 0.1	APPR BY	DATE	RSILLER	2017/12/06	PRODUCT CUSTOMER DRAWING
0 PLACES ±	DRAFT WHERE APPLICABLE MUST REMAIN WITHIN DIMENSIONS	DRAWING SIZE	THIRD ANGLE PROJECTION	A3	SERIES: 120084 MATERIAL NUMBER: SEE TABLE 2 CUSTOMER: GENERAL MARKET
A1	REV	DOCUMENT NUMBER: 1200845175 DOC TYPE: PSD DOC PART: 000 SHEET NUMBER: 2 OF 2			



VOLTAGE RATING: 30 VAC / 36 VDC  
 AMPERE RATING: 2 A  
 PROTECTION CLASS: IP 67/68/69K  
 OPERATING TEMPERATURE: -25°C / 90°C  
 UL CERTIFICATION: FILE NO. E152210  
 CSA CERTIFICATIONS: FILE NO. LR6837



ITEM	COMPONENT	MATERIAL	FINISH
1	O-RING 15.7x1.3	EPDM	BLACK
2	O-RING 7,1x1.35	VITON	RED
3	FEM CONTACT 0,8MM	BRASS	CuZn Ni/Au
4	REC. SHELL FEMALE	BRASS	Ni PLATED
5	INSERT	PA	BLACK
6	LOCKNUT	BRASS	Ni PLATED
7	POTTING MATERIAL	EPOXY	NONE

ENTER DESCRIPTION	EC NO: IPG2012-0511	2012/03/16
DRW:RSILLER	2012/03/16	
CHKD:ZISMAYILOV	2012/03/21	
APPR:CBURGER	2012/03/22	
REV	DESCRIPTION	
1		

QUALITY SYMBOLS	GENERAL TOLERANCES (UNLESS SPECIFIED)
▽=0	mm INCH
∇=0	4 PLACES ± --- ± ---
	3 PLACES ± --- ± ---
	2 PLACES ± 0.05 ± ---
	1 PLACE ± 0.10 ± ---
	0 PLACE ± --- ± ---
	ANGULAR ± .5 °
	DRAFT WHERE APPLICABLE MUST REMAIN WITHIN DIMENSIONS

DIMENSION STYLE	SCALE	DESIGN UNITS
MM ONLY	4:1	METRIC
DRAWN BY	DATE	TITLE
RSILLER	2012/03/16	REC M12 8P AC FE
CHECKED BY	DATE	M16 BM SOL SHLD BRA
ZISMAYILOV	2012/03/22	
APPROVED BY	DATE	
CBURGER	2012/03/22	
MATERIAL NO.	DOCUMENT NO.	SHEET NO.
1200840048	SD-120084-043	1 OF 1

THIRD ANGLE PROJECTION	
<b>molex</b>	
THIS DRAWING CONTAINS INFORMATION THAT IS PROPRIETARY TO MOLEX INCORPORATED AND SHOULD NOT BE USED WITHOUT WRITTEN PERMISSION	