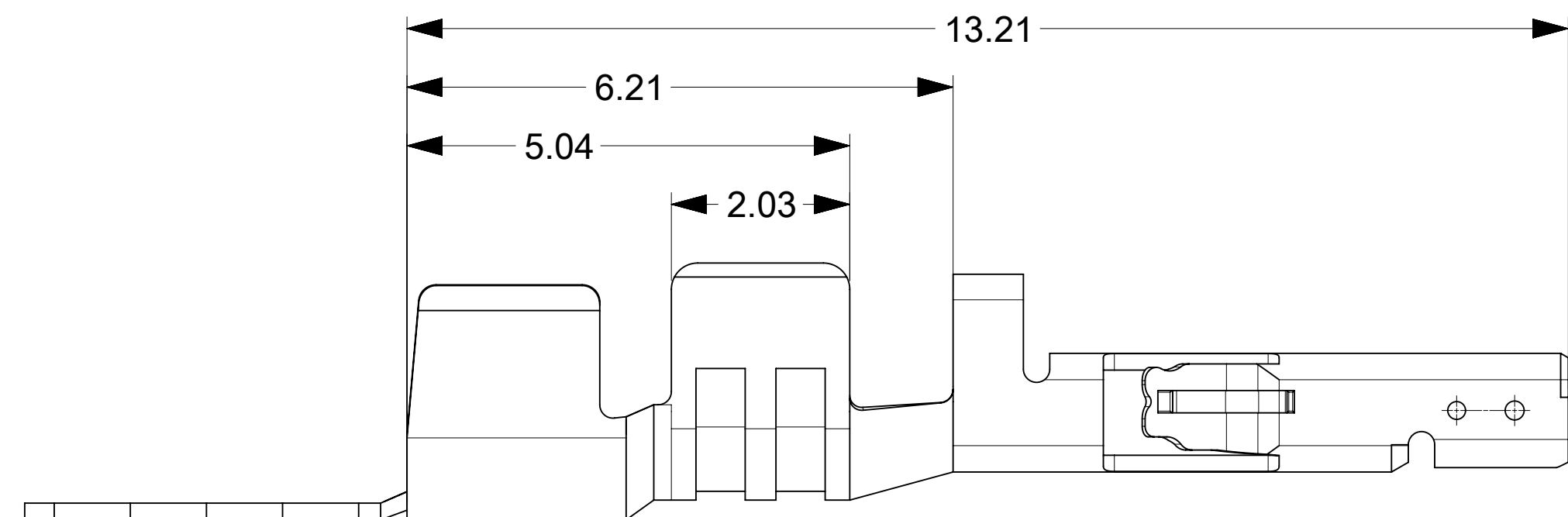


FOR 2064600041 ONLY



PART NUMBER	CONTACT PLATING OPTION	WIRE SIZE	ASSEMBLY OPTION	A	B	C	D
2064600011	TIN/NICKEL	26-30 AWG	CHAIN	2.10	1.91	1.65	1.47
2064600021	TIN/NICKEL	20-24 AWG		2.51	2.31	2.08	1.91
2064600031	TIN/NICKEL	18 AWG		2.51	2.31	2.39	2.18
2064600041	TIN/NICKEL	16 AWG		2.97	2.67	2.70	2.70
2064600012	15AU/NICKEL	26-30 AWG	CHAIN	2.10	1.91	1.65	1.47
2064600022	15AU/NICKEL	20-24 AWG		2.51	2.31	2.08	1.91
2064600032	15AU/NICKEL	18 AWG		2.51	2.31	2.39	2.18
2064600042	15AU/NICKEL	16 AWG		2.97	2.67	2.70	2.70
2064600013	30AU/NICKEL	26-30 AWG	CHAIN	2.10	1.91	1.65	1.47
2064600023	30AU/NICKEL	20-24 AWG		2.51	2.31	2.08	1.91
2064600033	30AU/NICKEL	18 AWG		2.51	2.31	2.39	2.18
2064600043	30AU/NICKEL	16 AWG		2.97	2.67	2.70	2.70

- NOTES:
- MATERIAL: HIGH COPPER ALLOY
 - PLATING :
 - OPTION 1: TIN OVER NICKEL OVERALL
 - OPTION 2: SELECT 15MICROINCH GOLD AND SELECT MATTE TIN OVER NICKEL.
 - OPTION 3: SELECT 30MICROINCH GOLD AND SELECT MATTE TIN OVER NICKEL.
 - PRODUCT SPECIFICATION: 2064600000-PS
 - PACKAGING SPECIFICATION: 2064600000-PK
 - TERMINAL FOR USE IN RECEPTACLE SERIES 206461
 - COSMETIC SPECIFICATION: PS-45499-002 CLASS B

THIS DRAWING CONTAINS INFORMATION THAT IS PROPRIETARY TO MOLEX ELECTRONIC TECHNOLOGIES, LLC AND SHOULD NOT BE USED WITHOUT WRITTEN PERMISSION											
DIMENSION UNITS mm		SCALE 15:1		CURRENT REV DESC:							
GENERAL TOLERANCES (UNLESS SPECIFIED)				EC NO: 626316							
ANGULAR TOL ± 0.5°		4 PLACES ±		DRWN: SCHEN76		2019/05/15		FEMALE TERMINAL MICRO-FIT + SOLUTION			
3 PLACES ±		2 PLACES ± 0.25		CHK'D: YXZHENG		2019/10/25					
1 PLACE ± 0.35		0 PLACES ±		APPR: YXZHENG		2019/10/25		PRODUCT CUSTOMER DRAWING			
DRAFT WHERE APPLICABLE MUST REMAIN WITHIN DIMENSIONS				INITIAL REVISION:							
THIRD ANGLE PROJECTION		DRAWING		DRWN: SMAHAJANSHET		2018/05/08		DOCUMENT NUMBER 2064600000-SD			
D-SIZE		SERIES		APPR: NCSR		2019/04/02					
SERIES		MATERIAL NUMBER		CUSTOMER		SHEET NUMBER		DOC TYPE PSD			
206460		SEE TABLE		GENERAL MARKET		1 OF 1					