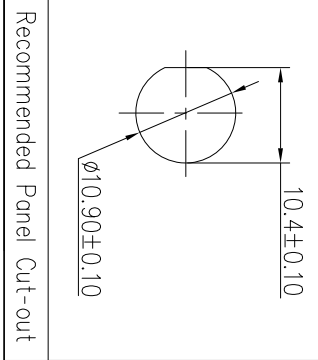
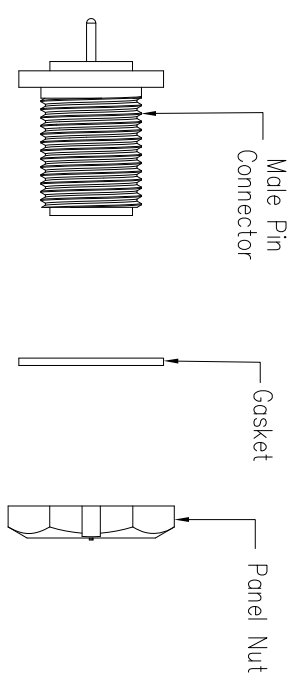
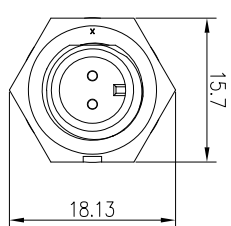
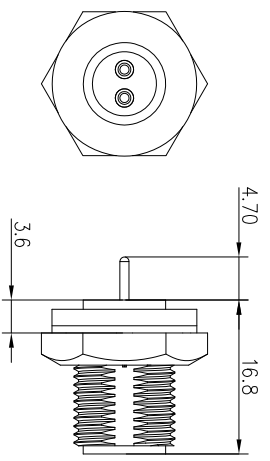


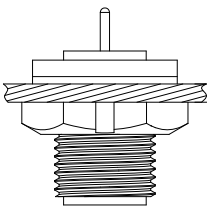
PCB Layout



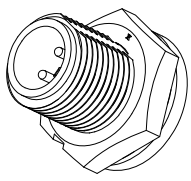
Recommended Panel Cut-out



Panel T: Max 4.0



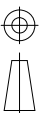
21XXX515-XX
Code
Pin Number



- Specification:
1. Operation Temperature: -45°C~105°C.
 2. Insulation Resistance: 100MΩ at DC 500V.
 3. Contact Resistance: <10mΩ.
 4. Withstand Voltage: 1500V AC.
 5. Operating Current: 5A.
 6. Operating Voltage: AC 110V.
 7. Waterproof Rate: IP67(Mated).
 8. Connector: Nylon+GF, Black.
 9. Panel Nut: Nylon, Black.
 10. Gasket: Silicon, Gray.
 11. Male Pin: Copper Alloy, Gold Plated.
 12. RoHS Compliant.
 13. UL Compliant: 2Pin~3Pin.
 14. Mating Cap P/N: 806-00028-00

2 Pin	P/N: 21002515-02	P/N: 21003515-02	P/N: 21004515-06
-------	------------------	------------------	------------------

Pin Assignments Front View



UNIT: mm

DESCRIPTION Mini Series Screw Type Front Mount With Male Pin(PCB)

TOLERANCE	±0.25
.X	±0.15
.XX	±0.05
.XXX	±1'
ANGLES	

SCALE	4:5	SHEET	1 OF 1
REV	C1	SIZE	A4
* : Inspection Item			

CHOGORI

PART NO	21XXX515-XX	DRAWN BY	Victory	DATE	2020/04/16
DWG NO		CHECKED BY	Ivan	DATE	2020/04/16
CUSTOMER		APPROVED BY	Ponson	DATE	2020/04/16

REV.	EN. NO.	DESCRIPTION	SIGN	DATE
C1	N/A	INITIAL DRAWING	Victory	2020/04/16