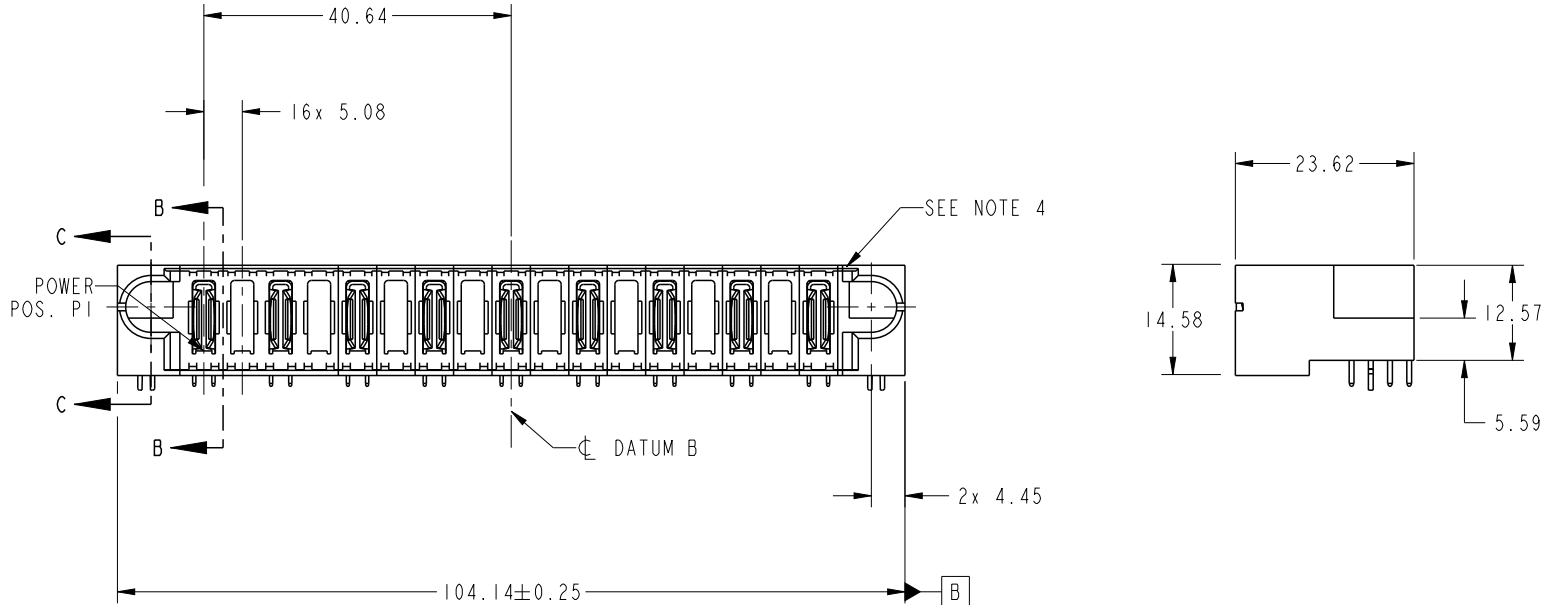
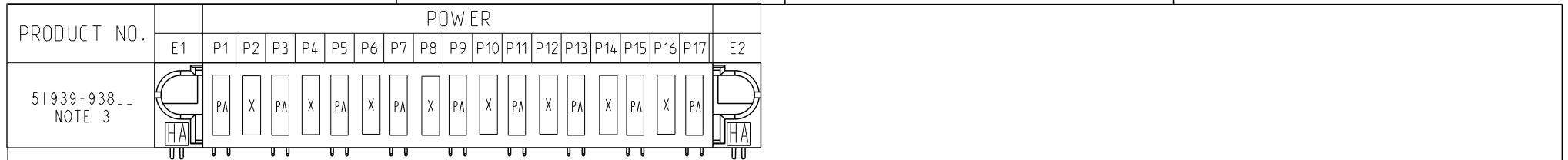


A

B

C

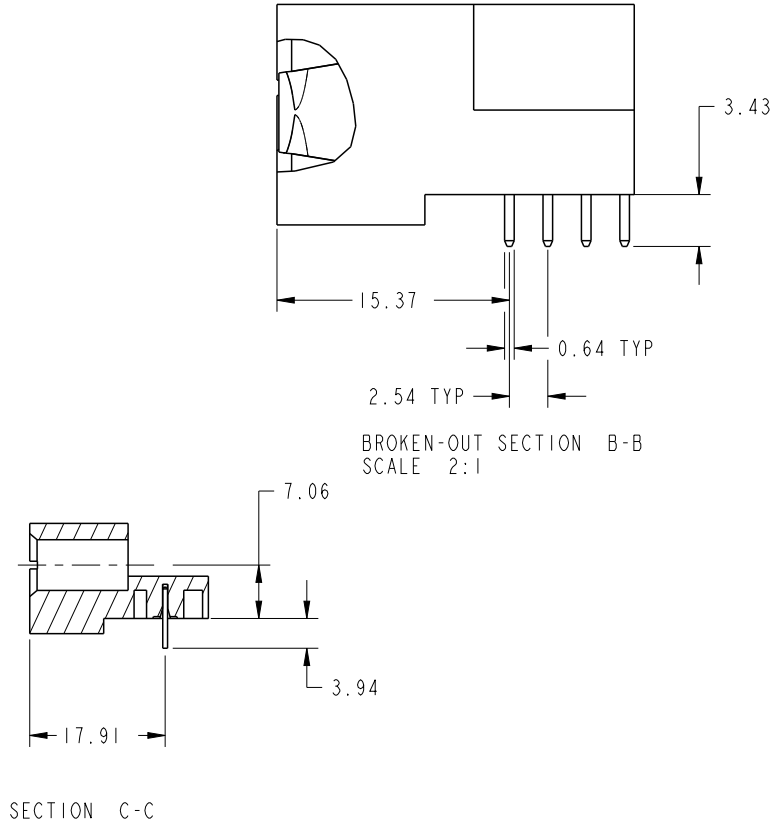
D



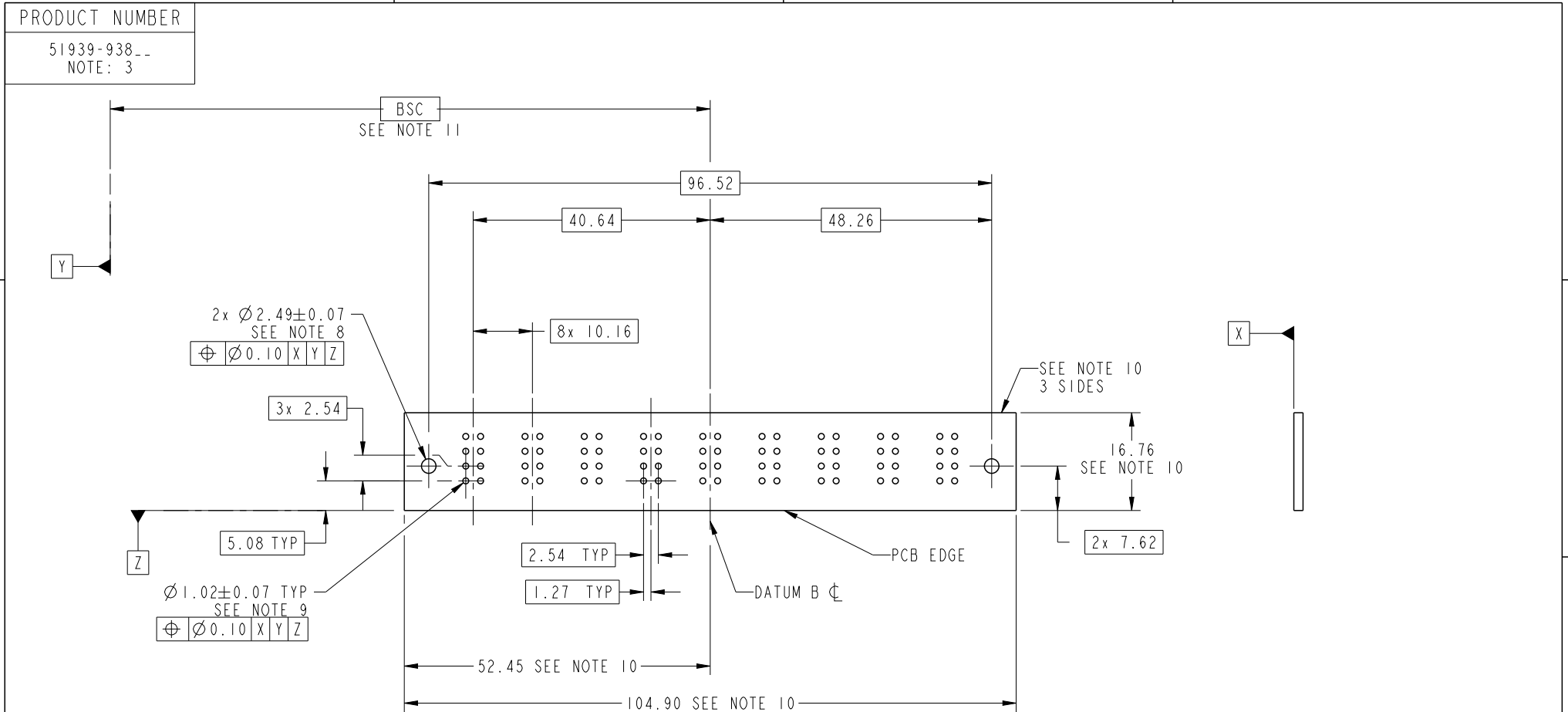
CODE	DIM "M" MATING LENGTH	CONTACT TYPE
PA	[N/A]	POWER
HA	[N/A]	HOLD-DOWN
X	[N/A]	OMITTED

spec ref	*	dr	Weller Luo	2014/12/02	projection 	MM ←→	size	A4	scale	1:1	
tolerance std	ASME Y14.5	eng	Yun-Ping Zhu	2017/08/29			ecn no	ELX-DG-27763-1			
TOLERANCES UNLESS OTHERWISE SPECIFIED		chr	Kaka Zhang	2017/09/14			product family	PwrBlade		rel level	Released
surface	linear	0.X	±0.50	Amphenol FCi	title	17P	dwg no	51939-938	rev	B	
ASME Y14.5		0.XX	±0.25								
	angular	0°	±2°								RIGHT ANGLE STB HEADER

PRODUCT NUMBER  
51939-938--  
NOTE: 3



spec ref *		dr <a href="#">Weller Luo</a> 2014/12/02		projection 	MM ←————→	size A4	scale 1:1
tolerance std ASME Y14.5	TOLERANCES UNLESS OTHERWISE SPECIFIED	eng <a href="#">Yun-Ping Zhu</a> 2017/08/29				ecn no <a href="#">ELX-DG-27763-1</a>	
		chr <a href="#">Kaka Zhang</a> 2017/09/14				rel level <b>Released</b>	
		appr <a href="#">Pei-Ming Zheng</a> 2017/09/14		product family PwrBlade			
surface ASME Y14.5	linear	0.X	±0.50	<b>Amphenol FCi</b>	title 17P RIGHT ANGLE STB HEADER	dwg no 51939-938	rev <b>B</b>
		0.XX	±0.25				
	0.XXX	±0.10					
	angular	0°	±2°	cat. no.	-	Product - Customer Special Drw	
						sheet 2 of 4	



spec ref		*		dr	Weller Luo	2014/12/02	projection 	MM ←→	size	A4	scale	1:1		
tolerance std		TOLERANCES UNLESS OTHERWISE SPECIFIED		eng	Yun-Ping Zhu	2017/08/29			ecn no	ELX-DG-27763-1				
ASME Y14.5				chr	Kaka Zhang	2017/09/14				rel level	Released			
surface		linear	0.X	±0.50	Amphenol FCi	title	product family		PwrBlade		dwg no	51939-938	rev	B
ASME Y14.5			angular	0.XX			±0.25	RIGHT ANGLE STB HEADER		sheet 3 of 4				
				0.XXX			±0.10	cat. no.	-	Product - Customer Special Drw				
			0°	±2°			PDS: Rev :B		STATUS:Released		Printed: Sep 14, 2017			

PRODUCT NUMBER  
51939-938--  
NOTE: 3

NOTES:

1. DIMENSIONS AND TOLERANCES ARE IN ACCORDANCE WITH ASME Y14.5M, 1994 UNLESS OTHERWISE SPECIFIED.

CONNECTOR NOTES:

2. HOUSING MATERIAL: UL 94 V-0 GLASS FILLED HIGH-TEMP THERMOPLASTIC  
POWER CONTACT MATERIAL: COPPER ALLOY  
SIGNAL PIN MATERIAL: COPPER ALLOY

3. SEE ITEM 1 & 2 IN PRINT 10064183 FOR PLATING SPEC OF 51939-938 AND 51939-938LF RESPECTIVELY.

4. MANUFACTURER'S NAME, DATE CODE AND OPTIONAL P/N TO APPEAR ON THIS SURFACE. THE MARK CAN BE OMITTED IF THERE IS NOT ENOUGH SPACE ON THIS SURFACE.

5. PRODUCT SPECIFICATION GS-12-149.  
APPLICATION SPECIFICATION BUS-20-067.

6. PACKAGED IN TRAYS.

PCB NOTES:

7. ALL HOLE DIAMETERS ARE FINISHED HOLE SIZE.

8. MOUNTING HOLES, WHERE APPLICABLE, ARE UNPLATED.

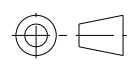
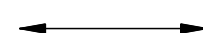
9.  $\varnothing 1.151 \pm 0.025$  DRILLED HOLES PLATED WITH  
0.008 MIN SnPb OR Sn OVER 0.03  
TO 0.08 Cu PLATING TO ACHIEVE  
 $\varnothing 1.02 \pm 0.07$  HOLE.

10. CONNECTOR KEEP-OUT ZONE.

11. DATUM AND BASIC DIMENSIONS ARE ESTABLISHED BY CUSTOMER.

12. MAX. OPERATING VOLTAGES: 480V AC, AND WITHSTAND HOT PLUG WITH 480V AC, 0.1A.

13. A  SYMBOL WILL BE NEXT TO ANY DIMENSION, VIEW, OR NOTE WHICH HAS BEEN MODIFIED WITH THE CURRENT DRAWING REVISION.

spec ref *		dr	Weller Luo	2014/12/02	projection 	MM 	size	A4	scale	1:1				
tolerance std ASME Y14.5	TOLERANCES UNLESS OTHERWISE SPECIFIED		eng	Yun-Ping Zhu			2017/08/29	ecn no	ELX-DG-27763-1					
			chr	Kaka Zhang			2017/09/14		product family	PwrBlade		rel level	Released	
surface	linear	0.X	$\pm 0.50$	Amphenol FCi	title	17P	dwg no	51939-938		rev	B			
ASME Y14.5		0.XX	$\pm 0.25$						cat. no.			-	Product - Customer Special Drw	sheet 4 of 4
		0.XXX	$\pm 0.10$											
	angular	0°	$\pm 2^\circ$											