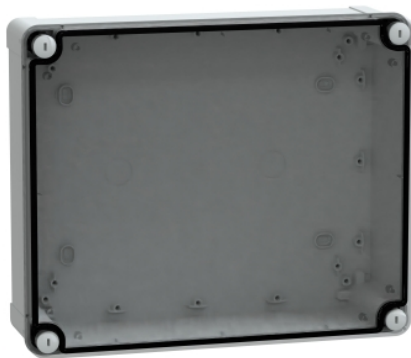


NSYTBS29248T
ABS box IP66 IK07 RAL7035
Int.H275W225D80 Ext.H291W241D88
Transp.cover H20



Main

Range	Thalassa
Product name	Thalassa TBS
Device Application	Multi-purpose
Category	Industrial box
Height	11.46 in (291 mm)
Width	9.49 in (241 mm)
Depth	3.46 in (88 mm)
Internal height	10.83 in (275 mm)
Internal width	8.86 in (225 mm)
Internal depth	3.15 in (80 mm)
Enclosure mounting	Wall mounted
Device composition	1 body 1 cover 4 cover screw
Body type	One piece moulded
Type of front cover	Low transparent cover
Cover fixing	Plastic screws
Lock type	Captive screw flat outside sealed area
Removable parts	Cover by captive screws

Complementary

Material	ABS (acrylonitrile butadiene-styrene)
Color	Gray RAL 7035) Transparent
Standards	IEC 62208
Product Certifications	TÜV
Electrical Insulation Class	Class II
IP degree of protection	IP66 conforming to NEMA 4.4X
IK degree of protection	IK07 IEC 62262
Glow wire resistance	1202 °F (650 °C) IEC 60695-2-11
Ambient Air Temperature for Storage	5...104 °F (-15...40 °C)
Operating temperature	-13...140 °F (-25...60 °C)
Net Weight	2.03 lb(US) (0.92 kg)

Ordering and shipping details

Category	80033-ENCLOSURE SYSTEMS POLYESTER
Discount Schedule	ES1
GTIN	3606480165528
Nbr. of units in pkg.	1
Package weight(Lbs)	31.25 oz (886.0 g)
Returnability	No
Country of origin	HU

The information provided in this documentation contains general descriptions and/or technical characteristics of the products of the performance of the products contained herein. This documentation is not intended as a substitute for and is not to be used for determining suitability or reliability of these products for specific user applications. It is the duty of any such user or integrator to perform the appropriate and complete risk analysis, evaluation and testing of the products with respect to the relevant specific application or use thereof. Neither Schneider Electric Industries SAS nor any of its affiliates or subsidiaries shall be responsible or liable for misuse of the information contained herein.

Packing Units

Unit Type of Package 1	PCE
Package 1 Height	3.94 in (10.0 cm)
Package 1 width	9.84 in (25.0 cm)
Package 1 Length	12.01 in (30.5 cm)
Unit Type of Package 2	PAM
Number of Units in Package 2	200
Package 2 Weight	518.09 lb(US) (235.0 kg)
Package 2 Height	86.61 in (220.0 cm)
Package 2 width	39.37 in (100.0 cm)
Package 2 Length	47.24 in (120.0 cm)
Unit Type of Package 3	CAR
Number of Units in Package 3	8
Package 3 Weight	18.65 lb(US) (8.46 kg)
Package 3 Height	15.94 in (40.5 cm)
Package 3 width	15.75 in (40.0 cm)
Package 3 Length	23.62 in (60.0 cm)

Offer Sustainability

Sustainable offer status	Green Premium product
REACH Regulation	REACH Declaration
REACH free of SVHC	Yes
EU RoHS Directive	Pro-active compliance (Product out of EU RoHS legal scope) EU RoHS Declaration
Toxic heavy metal free	Yes
Mercury free	Yes
RoHS exemption information	Yes
China RoHS Regulation	China RoHS Declaration
Environmental Disclosure	Product Environmental Profile

Contractual warranty

Warranty	18 months
----------	-----------