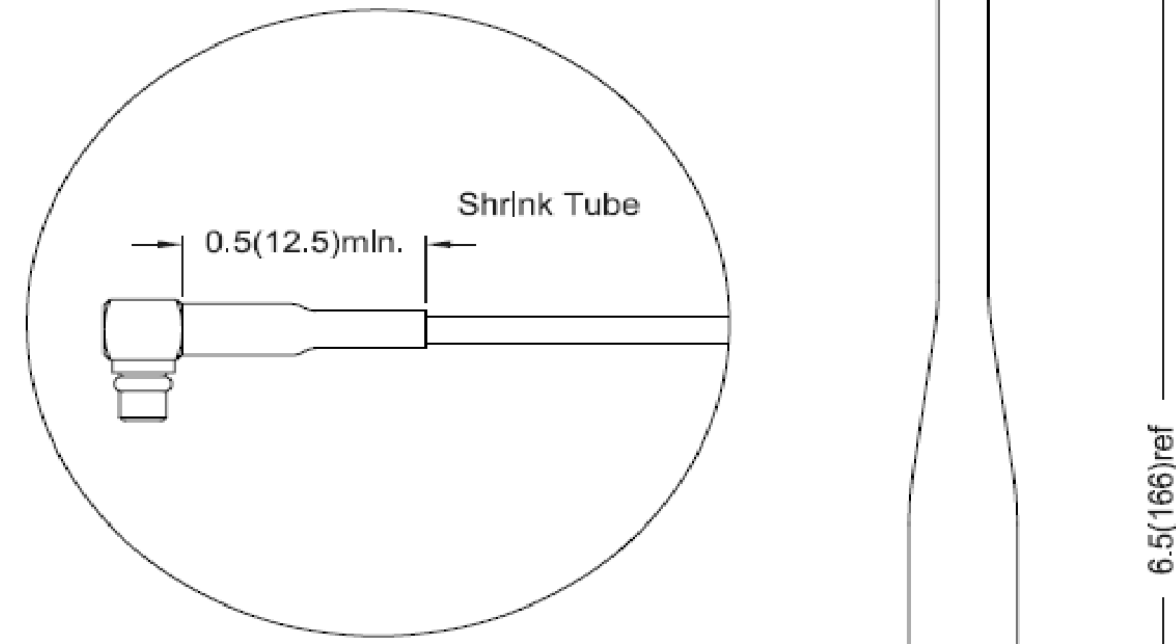


REVISIONS					
REV.	ECN#	ZONE	DESCRIPTION	CHANGED BY/DATE	APPROVED BY/DATE
AA			PRODUCTION RELEASE	WT 06APR20	WT 06APR20

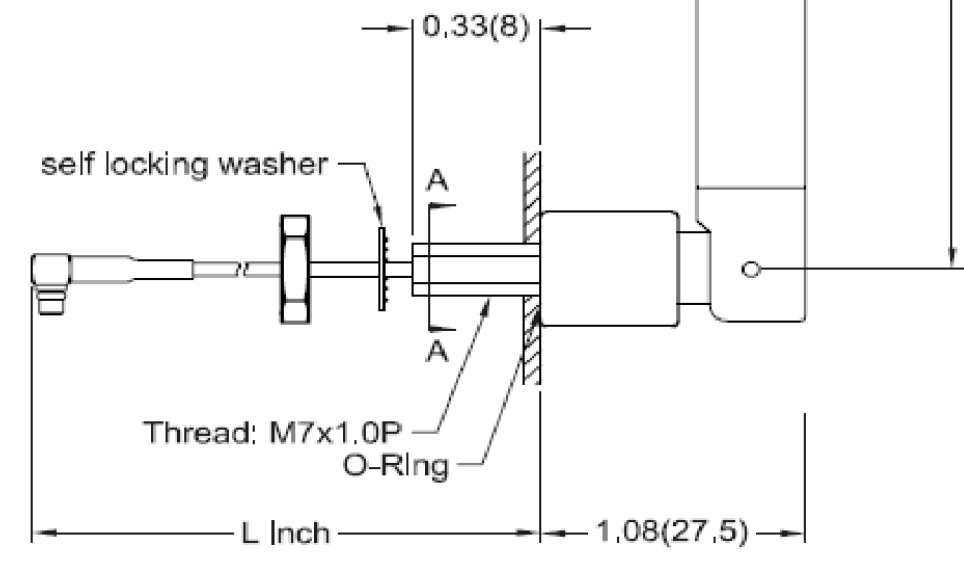


**Electrical Properties:**

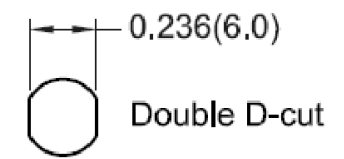
Frequency Range: 2.4~2.5 GHz  
 Impedance: 50Ω nominal  
 VSWR: <2.0:1  
 Gain: \*5.0 dBi  
 Radiation: Omni  
 Polarization: Vertical  
 \*Gain is measured under without flying lead.

**Mechanical Properties:**

Cable: M17/93-RG178; Harbour Industries  
 Cable Length: Standard length L=5 inches, or to be specified.  
 Connector: R/A MMCX Plug(male);  
 Material:  
 Overmold: Polyurethane(Black); BASF  
 Swivel: Polyurethane(Black); BASF and Polycarbonate(Black); Bayer  
 Operation Temp.: -20°C to +65°C  
 Storage Temp.: -30°C to +75°C



**A-A view-Thread cross-section**

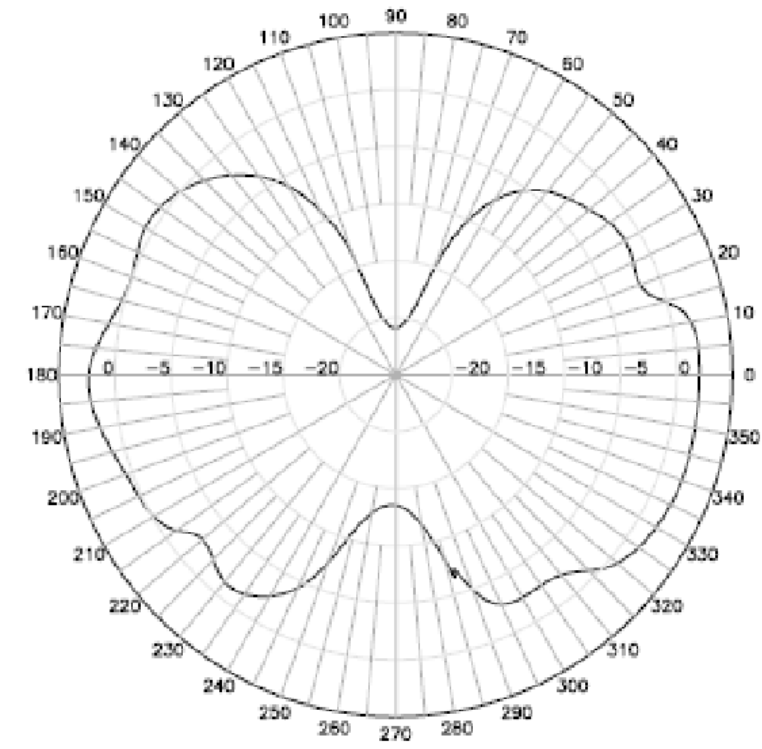


The component(s), including any plating, finishes, coatings, chemicals and surfaces treatments, supplied in this document/drawing must conform and comply with the latest issue of Laird Specification LT-GES-001, which fully includes but is not limited to all contents of Directive (EU) 2015/863 (RoHS Directive), as well as includes requirements of the Joint Industry Guide standard JIG-101, April 2005. The component(s) in this document/drawing may be subject to a full compound analysis for proof of compliance. The latest issue of Laird Specification LT-GES-001, (General Specification for the Environment) is readily available upon request from the supplier.

UNLESS OTHERWISE NOTED, THIS DOCUMENT CONTAINS LAIRD CONFIDENTIAL INFORMATION. REPRODUCTION, USE, DISCLOSURE OR TRANSMITTAL OF ALL OR ANY PART OF THIS DOCUMENT IS PROHIBITED EXCEPT TO THE EXTENT APPROVED IN WRITING BY AN AUTHORIZED REPRESENTATIVE OF LAIRD. LAIRD RESERVES ALL RIGHTS UNDER PATENTS, TRADEMARKS, COPYRIGHTS AND TRADE SECRETS. COPYRIGHT, LAIRD TECHNOLOGIES 2014, ALL RIGHTS RESERVED.

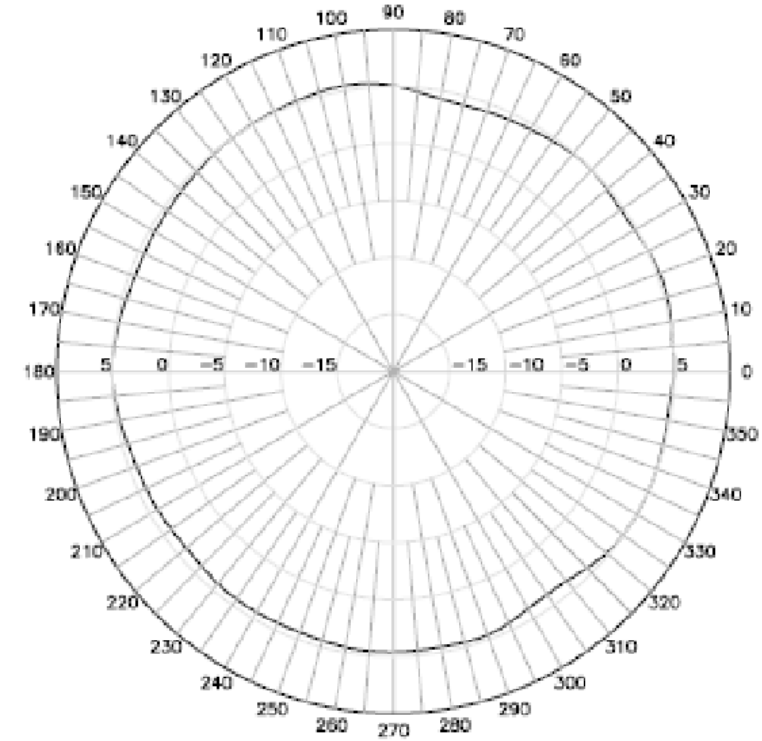
<b>MATERIAL:</b>		THIRD ANGLE PROJECTION		IAS, PENANG MALAYSIA	
<b>FINISH:</b>					
APPROVALS		DATE		TITLE:	
DRAWN BY	WT	06APR20		<b>ANT, 2.4GHZ, 5.0DBI</b> <b>SWIVEL, FL W/ U.FL, 7IN</b>	
ELEC. ENG.	PETER	06APR20			
MECH. ENG.	CY	06APR20		INTERPRET DIMENSIONING AND TOLERANCING IN ACCORDANCE WITH ASME Y14.5M-2009 <b>TOLERANCES UNLESS OTHERWISE SPECIFIED</b>	
MFG./OPS.	GL	06APR20		DIMENSIONS ARE IN INCHES FRACTION : ±1/64 ANGLE: ±30' 1 PLACE DECIMAL: ±0.1 2 PLACE DECIMAL: ±0.01 3 PLACE DECIMAL: ±0.005 SURFACE ROUGHNESS 63/√	
SIZE		DWG. NO.		REV	
<b>B</b>		<b>0600-00039</b>		<b>AA</b>	
SCALE: 2:1		PREVIOUS#		SHEET 1 OF 2	

**E-Plane Pattern @ 2.45GHz**



L (inch)	Attenuation (dB)
3"	0.20 dB
4"	0.27 dB
5"	0.33 dB
6"	0.40 dB
8"	0.53 dB
10"	0.66 dB
12"	0.79 dB

**H-Plane Pattern @ 2.45GHz**



Flying Lead Cable Length v.s. Attenuation Table  
Standard M17/93-RG178 Cable Measured @ 2.4GHz



IAS, PENANG  
MALAYSIA

SIZE	DWG. NO.	REV
<b>B</b>	<b>0600-00039</b>	<b>AA</b>
SCALE: 2:1	PREVIOUS#	SHEET 2 OF 2