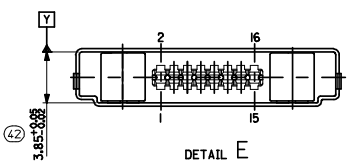


TABLE A		
COMPONENT	PCB PAD DIMENSION	QTY
LOCKING LATCHES	2.60 x 4.65 \square 0.10 R	(x2)
SIGNAL CONTACTS	0.35 $^{+0.05}$ x 2.0 \square 0.10 R	(x16)
SMT RETENTION PADS	2.5 x 5.0 \square 0.10 R	(x2)

TABLE B		
ITEM No	TAIL COPLANARITY	SEE NOTE
1 & 2	39 -0.075 $^{+0.00}$ $^{-0.10}$	3
3 & 4	40 0.00 $^{+0.00}$ $^{-0.125}$	3
5 & 6	41 0.00 $^{+0.05}$ $^{-0.10}$	3 & 4

NOTES:
 1. MATERIALS:
 HOUSING: LCP 35% GLASS FILL, UL94 V-0, COLOUR: BLACK
 SMT RETENTION PADS: PHOSPHOR BRONZE 0.30REF THICK.
 PLATING: 3 - 5µm TIN OVER 127µm NICKEL
 LOCKING LATCHES: PHOSPHOR BRONZE 0.30REF THICK.
 PLATING: 3 - 5µm TIN OVER 127µm NICKEL
 SIGNAL CONTACTS: PHOSPHOR BRONZE 0.20REF THICK.
 PLATING: 127µm NICKEL UNDERCOAT OVERALL
 GOLD FLASH 0.1µm MIN OVER PALLADIUM NICKEL
 10µm MIN IN THE CONTACT AREA. 3.0µm TIN
 ON THE SOLDER TAIL.
 2. COMPONENT PACKAGING: TO BE PACKED IN EMBOSSED TAPE
 SEE 50A-90811-9001 SHEET
 3. ALL SIGNAL SMT TAILS TO LIE WITHIN A COPLANARITY BAND OF
 100µm FROM EACH OTHER.
 4. MATES WITH 90813 SERIES PLUS CONNECTOR
 90852 SERIES CRADLE CONNECTOR
 5. SEE PRODUCT SPECIFICATION PS-90811-001.
 LAST INSPECTION No. 43



ADDED CRITICAL DIMENSIONS EC NO: E2008-0262 DRAWN BY: MDR/WINDGARTON CHECKED BY: MDR/WINDGARTON APPROVED BY: APPR:BMAGUIRE DATE: 2008/03/20 DATE: 2008/03/20 DATE: 2008/03/20	QUALITY SYMBOLS ▽=0 ▽=5	GENERAL TOLERANCES (UNLESS SPECIFIED) mm INCH 4 PLACES ± --- ± --- 3 PLACES ± --- ± --- 2 PLACES ± 0.05 ± --- 1 PLACE ± 0.1 ± --- ANGULAR ± 2 °	DIMENSION STYLE MM ONLY DRAWN BY: FDUGGAN DATE: 2006/11/21 CHECKED BY: SMC/GREEVEY DATE: 2006/11/21 APPROVED BY: EFOLAN DATE: 2006/11/21	SCALE: 5:1 DESIGN UNITS: METRIC TITLE: 1MM PITCH I/O RCPT 16CKT	THIRD ANGLE PROJECTION
	DRAFT WHERE APPLICABLE MUST REMAIN WITHIN DIMENSIONS	MATERIAL NO.: 90811-2131 DOCUMENT NO.: SD-90811-010 SHEET NO.: 1 OF 1	MOLEX INCORPORATED		

7 6 5 4 3 2 1

E

E

D

D

C

C

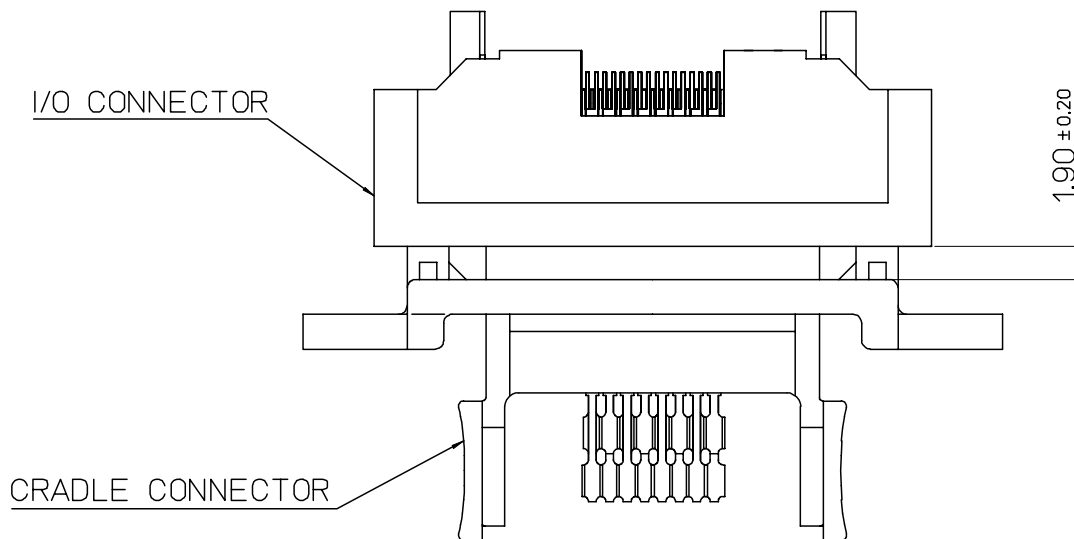
B

B

A

A

MATED GAP SPECIFICATION



NOTE:
1. SEE SHEET 1 FOR ALL UNSPECIFIED NOTES AND DIMENSIONS.

SEE SHEET 1 EC NO: E2007-0933 DRWN:FDUGGAN CHKD: APPR:EFOLAN	2007/06/08 2007/06/20 2007/06/21	QUALITY SYMBOLS	GENERAL TOLERANCES (UNLESS SPECIFIED)		DIMENSION STYLE MM ONLY		SCALE ---	DESIGN UNITS METRIC	THIRD ANGLE PROJECTION																													
		$\nabla = 0$ $\triangle = 0$	<table border="1"> <thead> <tr> <th></th> <th>mm</th> <th>INCH</th> </tr> </thead> <tbody> <tr> <td>4 PLACES</td> <td>± ---</td> <td>± ---</td> </tr> <tr> <td>3 PLACES</td> <td>± ---</td> <td>± ---</td> </tr> <tr> <td>2 PLACES</td> <td>± 0.10</td> <td>± ---</td> </tr> <tr> <td>1 PLACE</td> <td>± 0.2</td> <td>± ---</td> </tr> </tbody> </table>		mm	INCH	4 PLACES	± ---	± ---	3 PLACES	± ---	± ---	2 PLACES	± 0.10	± ---	1 PLACE	± 0.2	± ---	<table border="1"> <thead> <tr> <th>DRAWN BY</th> <th>DATE</th> <th>TITLE</th> </tr> </thead> <tbody> <tr> <td>F DUGGAN</td> <td>2007/05/01</td> <td rowspan="2">1MM PITCH I/O RCPT 16CKT</td> </tr> <tr> <td>S MCGREEVY</td> <td>2007/05/01</td> </tr> <tr> <td colspan="2">APPROVED BY</td> <td></td> </tr> <tr> <td>E FOLAN</td> <td>2007/05/01</td> <td></td> </tr> </tbody> </table>	DRAWN BY	DATE	TITLE	F DUGGAN	2007/05/01	1MM PITCH I/O RCPT 16CKT	S MCGREEVY	2007/05/01	APPROVED BY			E FOLAN	2007/05/01		MOLEX INCORPORATED		MATERIAL NO. 90811-2131	DOCUMENT NO. SD-90811-010	SHEET NO. 2 OF 2
			mm	INCH																																		
		4 PLACES	± ---	± ---																																		
		3 PLACES	± ---	± ---																																		
2 PLACES	± 0.10	± ---																																				
1 PLACE	± 0.2	± ---																																				
DRAWN BY	DATE	TITLE																																				
F DUGGAN	2007/05/01	1MM PITCH I/O RCPT 16CKT																																				
S MCGREEVY	2007/05/01																																					
APPROVED BY																																						
E FOLAN	2007/05/01																																					
DRAFT WHERE APPLICABLE MUST REMAIN WITHIN DIMENSIONS			THIS DRAWING CONTAINS INFORMATION THAT IS PROPRIETARY TO MOLEX INCORPORATED AND SHOULD NOT BE USED WITHOUT WRITTEN PERMISSION																																			
A	REV																																					

6

5

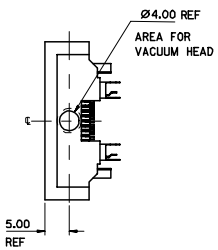
4

3

2

1

COMPONENT DETAIL
(W/UNSWITCHED RF)

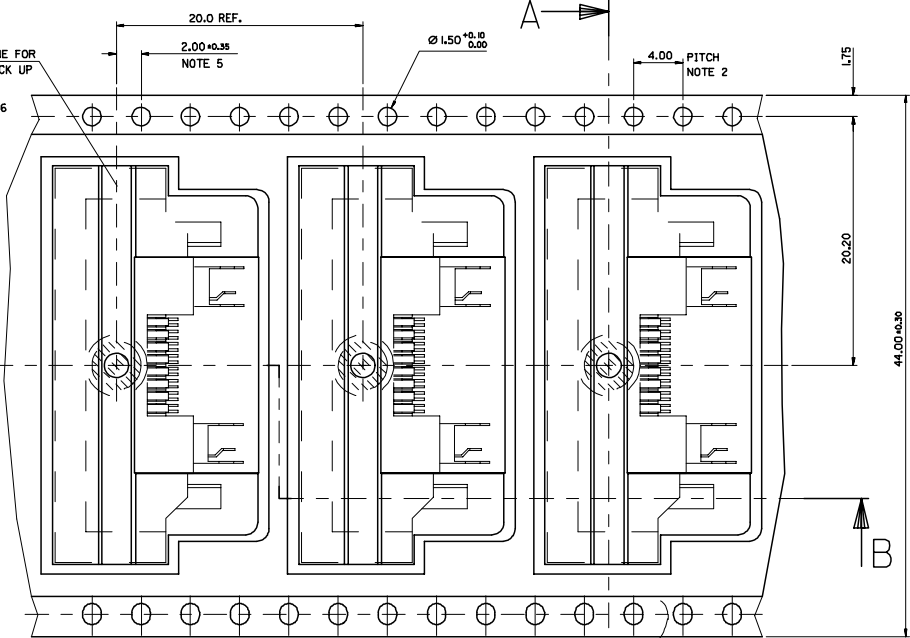


SCALE 2:1

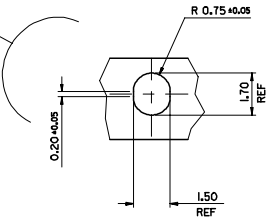
99044-1066

CENTRE LINE FOR VACUUM PICK UP

99044-5006

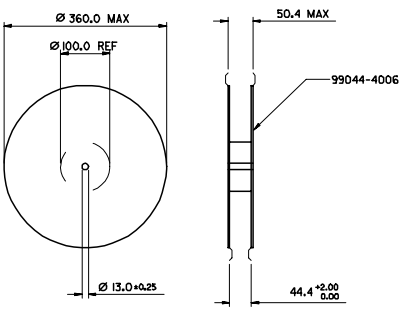


DIRECTION OF UNREELING



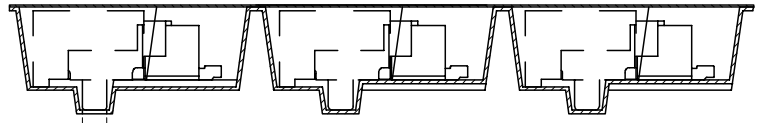
SCALE 10:1

REFERENCE ONLY

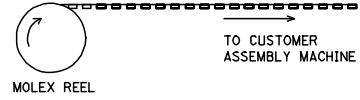


REEL DIMENSIONS
DO NOT SCALE

(400) PIECES / REEL (SUBJECT TO CHANGE)
(THREE) REELS / CARDBOARD BOX (96707-0007)
(1200) PIECES / CARDBOARD BOX (SUBJECT TO CHANGE)



B - B



MOLEX REEL

COMPONENT	DESCRIPTION
90811-2129	MOBILE PHONE I/O CONNECTOR
90811-2130	1mm Pitch I/O Rpt 16Ckt W/RF
90811-2131	1mm Pitch I/O Rpt 16Ckt W/O RF

NOTES:

- MATERIAL :
CARRIER TAPE : VOLUME CONDUCTIVE POLYSTYRENE , 0.4 REF THICK , BLACK
COVER TAPE : COLD SEAL POLYESTER , 0.06 REF THICK, TRANSPARENT
- PITCH TOLERANCE OVER ANY 10 PITCHES ±0.2
- PEEL FORCE OF THE COVER TAPE IS 0.1N TO 1.0N
AT A MAXIMUM PEEL SPEED OF 300mm/min ±10%.
- REFERENCE TO IEC 286-3 EXCEPT WHERE NOTED

ADDED PART NO ECHANGE 2007-0458 2007/05/08 DRIVING DUGGAN 2007/05/13 CHKD: APPROVED: 2007/05/16	QUALITY SYMBOLS ▽=0 ▽=0	GENERAL TOLERANCES (UNLESS SPECIFIED)		DIMENSION STYLE MM ONLY		SCALE 5:1	DESIGN UNITS METRIC	THIRD ANGLE PROJECTION
		4 PLACES ± --- ± --- 3 PLACES ± --- ± --- 2 PLACES ± 0.10 ± --- 1 PLACE ± 0.2 ± ---	ANGULAR ± 5°	DRAWN BY T. MAHON 1998/06/16	DATE 1998/06/16	TITLE BLISTER PACKAGING FOR MOBILE PHONE HANDSET	MATERIAL NO. SDA-90811-9001	

DRAFT WHERE APPLICABLE MUST REMAIN WITHIN DIMENSIONS

THIS DRAWING CONTAINS INFORMATION THAT IS PROPRIETARY TO MOLEX INCORPORATED AND SHOULD NOT BE USED WITHOUT WRITTEN PERMISSION