

Pb THIS PRODUCT MANUFACTURED WITH LEAD-FREE PROCESSING

DESIGNED & DIMENSIONED IN MILLIMETERS [INCHES]

BNC7T-P-C-XX-ST-CA6X

GENDER
-P: PLUG

TYPE
-C: CABLE

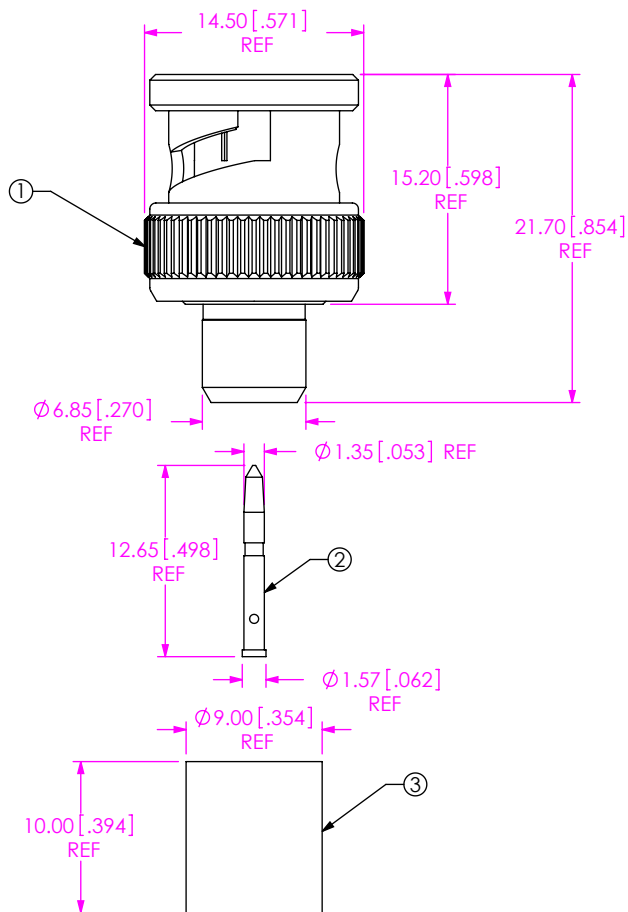
OPTION
-CA6: CCA-6/CCA-1694A (USE SOLDERED CENTER CONTACT)
-CA6B: CCA-4694R (USE SOLDERED CENTER CONTACT)
-CA6C: CCA-6/CCA-1694A (USE CRIMPABLE CENTER CONTACT)

ORIENTATION
-ST: STRAIGHT

PLATING SPECIFICATION
-GN: GOLD / NICKEL
10µ" Au / 50µ" Ni MIN ON PIN
100µ" Ni MIN ON OUTER CONTACT

DO NOT SCALE FROM THIS PRINT

TABLE 1				
ITEM	COMPONENT	-CA6	-CA6B	-CA6C
1	SUB-ASSEMBLY	SUB-BNC7T-P-C-N-ST-CA6	SUB-BNC7T-P-C-N-ST-CA6B	SUB-BNC7T-P-C-N-ST-CA6
2	PIN	BNC7T-P-C-G-ST-CA6-PIN	BNC7T-P-C-G-ST-CA6-PIN	BNC7T-P-C-G-ST-CA6-PIN-C
3	FERRULE	BNC-FER-001-N		



NOTES:

1. REPRESENTS A CRITICAL DIMENSION.
2. PUSHOUT FORCE FOR CENTER CONTACT: 26.69 N [6.0 LB] MIN.
3. PRODUCT TO BE PACKAGED PER PACKAGING STANDARD CO-HD-WI-3040-M.
4. RoHS COMPLIANT.

UNLESS OTHERWISE SPECIFIED DIMENSIONS ARE IN MILLIMETERS [INCHES]

TOLERANCES ARE:

DECIMALS	ANGLES
.X: ± 0.3 [.01]	5°
.XX: ± 0.13 [.005]	
.XXX: ± 0.051 [.0020]	

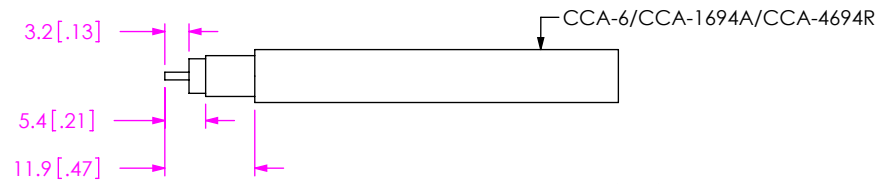
PROPRIETARY NOTE
THIS DOCUMENT CONTAINS CONFIDENTIAL AND PROPRIETARY INFORMATION AND ALL DESIGN, MANUFACTURING, REPRODUCTION, USE, PATENT RIGHTS AND SALES RIGHTS ARE EXPRESSLY RESERVED BY SAMTEC, INC. THIS DOCUMENT SHALL NOT BE DISCLOSED, IN WHOLE OR PART, TO ANY UNAUTHORIZED PERSON OR ENTITY NOR REPRODUCED, TRANSFERRED OR INCORPORATED IN ANY OTHER PROJECT IN ANY MANNER WITHOUT THE EXPRESS WRITTEN CONSENT OF SAMTEC, INC.

MATERIAL: DO NOT SCALE DRAWING SHEET SCALE: 1:1
SHELL, FERRULE, NUT: BRASS
CONTACT: BRASS
DIELECTRIC: PTFE
GASKET: SILICONE

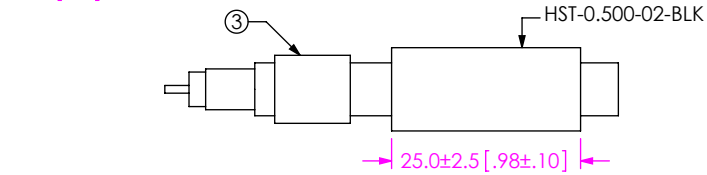


520 PARK EAST BLVD, NEW ALBANY, IN 47150
PHONE: 812-944-6733 FAX: 812-948-5047
e-Mail: info@SAMTEC.com code: 55322

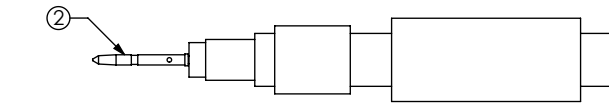
DESCRIPTION:	TRUE 75 OHM BNC STRAIGHT PLUG RG-6
DWG. NO.	BNC7T-P-C-XX-ST-CA6X
BY: G. HERMAN	09/29/2008 SHEET 1 OF 2



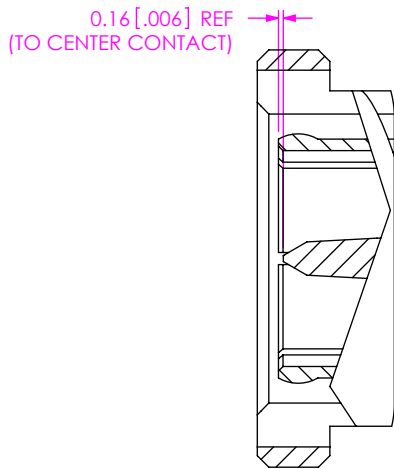
IN-PROCESS 1
STRIP AND TIN INNER CONDUCTOR



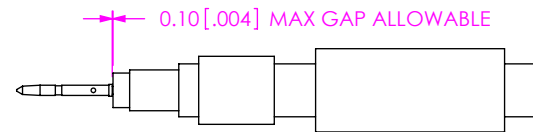
IN-PROCESS 2
ADD HEAT SHRINK TUBE AND FERRULE



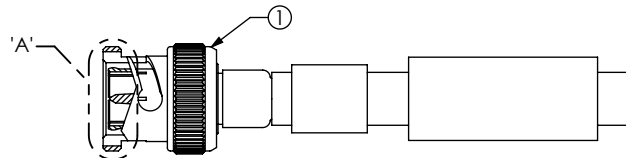
IN-PROCESS 3
ADD SIGNAL PIN



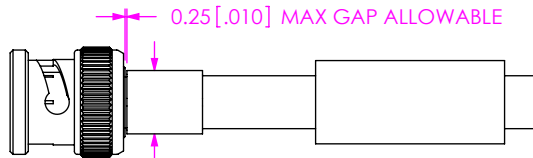
DETAIL 'A'
SCALE 4:1



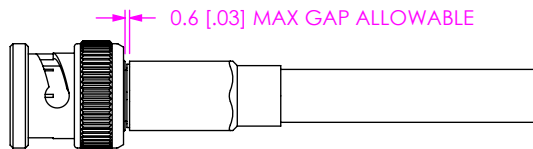
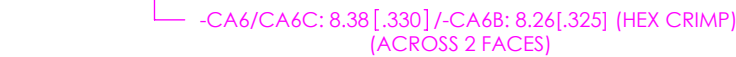
IN-PROCESS 4
SOLDER SIGNAL PIN, OR CRIMP
(USE DANIELS WA22CJ TOOL AND K1764 POSITIONER, CRIMP ON SETTING 6)



IN-PROCESS 5
FLARE BRAIDED SHIELD AND ADD SUB-BNC7T-P-C-X-ST-CA6
CABLE FOIL WRAP TO BE INSERTED INSIDE CABLE BODY



IN-PROCESS 6
CRIMP FERRULE
(USE .324 HEX DIE)
(USE .325 HEX DIE FOR CCA-4694R CABLE)



IN-PROCESS 7
APPLY HEAT SHRINK TUBE

PROPRIETARY NOTE
THIS DOCUMENT CONTAINS CONFIDENTIAL AND PROPRIETARY INFORMATION AND ALL DESIGN, MANUFACTURING, REPRODUCTION, USE, PATENT RIGHTS AND SALES RIGHTS ARE EXPRESSLY RESERVED BY SAMTEC, INC. THIS DOCUMENT SHALL NOT BE DISCLOSED, IN WHOLE OR PART, TO ANY UNAUTHORIZED PERSON OR ENTITY NOR REPRODUCED, TRANSFERRED OR INCORPORATED IN ANY OTHER PROJECT IN ANY MANNER WITHOUT THE EXPRESS WRITTEN CONSENT OF SAMTEC, INC.

DO NOT SCALE DRAWING

SHEET SCALE: 1:1



520 PARK EAST BLVD, NEW ALBANY, IN 47150
PHONE: 812-944-6733 FAX: 812-948-5047
e-Mail: info@SAMTEC.com code: 55322

DESCRIPTION:
TRUE 75 OHM BNC STRAIGHT PLUG RG-6

DWG. NO.
BNC7T-P-C-XX-ST-CA6X

BY: G. HERMAN 09/29/2008 SHEET 2 OF 2