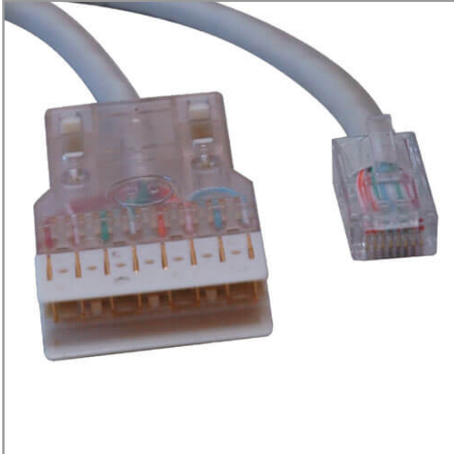


Cat5e 350 MHz (UTP) Ethernet Cable (RJ45M/110) - Gray, 25 ft. (7.62 m)

MODEL NUMBER: N017-025-GY



Highlights

- RJ45 to 110, 25-ft. (7.62 m)
- Easily connects to 110 Punch Down blocks
- Cat5e 100mb rated

Package Includes

25-ft. (7.62 m) RJ45 to 110 Cat5e Patch Cable

Features

- RJ45 to 110, 25-ft. (7.62 m)
- 4-pair stranded Cat5e patch cable
- Gray PVC jacket

Specifications

OVERVIEW	
UPC Code	037332142382
Technology	Cat5/5e
PHYSICAL	
Color	Gray
Cable Shielding	UTP
Wire Type	Stranded
Cable Length (ft.)	25
Cable Length (m)	7.6
Cable Length (in.)	300
Cable Length (cm)	762
Shipping Dimensions (hwd / cm)	27.94 x 17.78 x 1.27
Shipping Dimensions (hwd / in.)	11.00 x 7.00 x 0.50



Tripp Lite
1111 W. 35th Street
Chicago, IL 60609 USA
Telephone: 773.869.1234
www.tripplite.com

Shipping Weight (kg)	0.34
Shipping Weight (lbs.)	0.75
CONNECTIONS	
Side A - Connector 1	RJ45 (MALE)
Side B - Connector 1	110 (MALE)
FEATURES & SPECIFICATIONS	
Cable Style	Unshielded
SPECIAL FEATURES	
Snagless Connector	No
WARRANTY	
Product Warranty Period (Worldwide)	Lifetime limited warranty

© 2021 Tripp Lite. All rights reserved. All product and company names are trademarks or registered trademarks of their respective holders. Use of them does not imply any affiliation with or endorsement by them. Tripp Lite has a policy of continuous improvement. Specifications are subject to change without notice. Tripp Lite uses primary and third-party agencies to test its products for compliance with standards. See a list of Tripp Lite's testing agencies: <https://www.tripplite.com/products/product-certification-agencies>