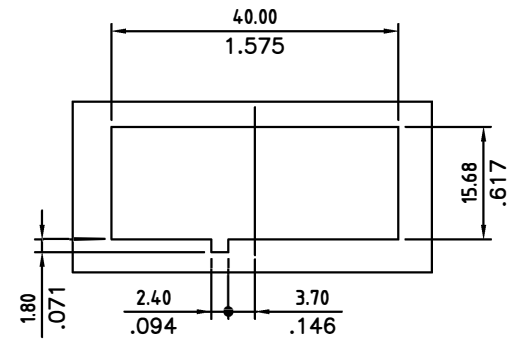
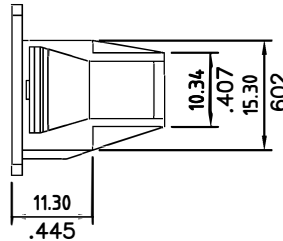
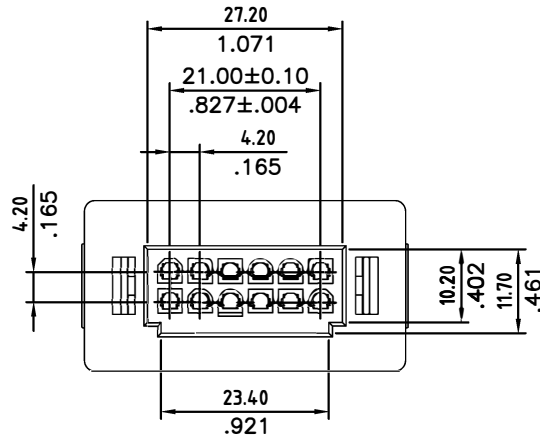
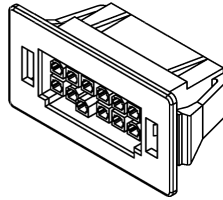
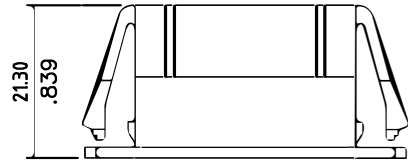


SIGN	DATE	DESCRIPTION	APPROVER
		<i>THIS IS CAD DRAWING, DO NOT REVISE MANUALLY!!!</i>	

Material

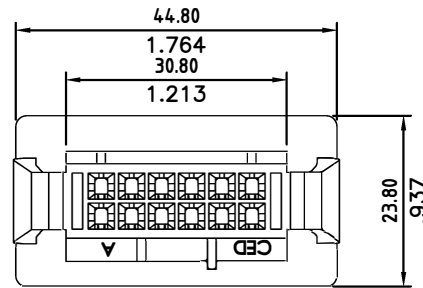
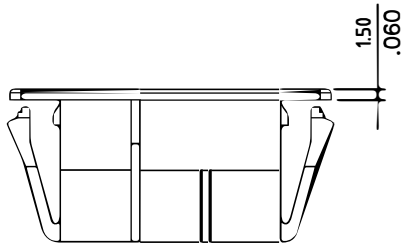
Body: PA 66 (Grilon AS V0)
 Color: Nature
 Contacts: 420CP-T-X series

RoHS Compliant



Mounting Hole Details

suitable for Panel thickness between 1.8 to 2.0mm



Back View

THESE DRAWINGS AND SPECIFICATIONS ARE THE PROPERTY OF ON-SHORE TECHNOLOGY, INC. AND SHALL NOT BE REPRODUCED, COPIED OR USED IN ANY MANNER WITHOUT THE PRIOR WRITTEN CONSENT OF ON-SHORE TECHNOLOGY, INC.



TITLE 420C2PM Series - 4.2mm dual row housing, cable side, panel mount, 12 circuits, first mate/last break							
PART NO. 420C2PM12FL0		DWG NO. 420C2PM12FL0.DWG		4050			
APPROVED	CHECKED	DESIGNED	DRAWN	Tolerance			
David 2016.04.13	Eisley 2016.04.13	Eisley 2016.04.13	Hank 2016.04.13	X.X ±0.30/.012		X.XX ±0.20/.008	
				UNIT: mm/in		X.XXX ±0.10/.004	
				SCALE: NONE		X* ±1°	
				SHEET: 01/01		REV.: A	