

Change Notice YB Series Illuminated Pushbuttons

Change of Bicolor LED Specification for AT621 2-Volt without Resistor

Type of Change:


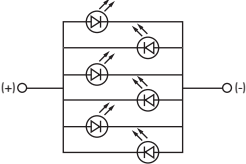
- Engineering Part Number
 Product Appearance

The YB Series Illuminated Pushbuttons and Indicators will have a change to the AT621 2-volt 6-element bicolor LEDs without resistors. The change will effect all models, both standard and custom. Differences in the LED specification values are outlined in the following table.



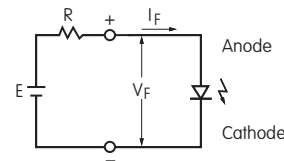
YB Pushbuttons

Electrical Specifications for AT621 Bicolor LED

Bicolor AT621	Electrical specifications are determined at a basic temperature of 25°C.	Before Change	After Change	
<div style="border: 1px solid black; padding: 2px; display: inline-block;">2CF</div> Red/Green  T-1½ Bi-pin	Bicolor LED is translucent white in OFF state.	<div style="border: 1px solid black; padding: 2px; display: inline-block;">02</div>	<div style="border: 1px solid black; padding: 2px; display: inline-block;">02</div>	 AT621 Bicolor LED 2-volt 6-element without Resistor
Maximum Forward Current	I_{FM}	60 mA	60 mA	
Typical Forward Current	I_F	45 mA	45 mA	
Forward Voltage (Red/Green)	V_F	2.0 / 2.1V	1.9 / 2.1V	
Current Reduction Rate Above 25°C	ΔI_F	0.80 mA/°C	0.80 mA/°C	
Ambient Temperature Range		-25 ~ +50 °C	-25 ~ +50 °C	

Notes

- The LED circuit is isolated and requires an external power source.
- If the source voltage exceeds the rated voltage, a ballast resistor is required. The resistor value can be calculated by using the formula shown here.
- The change to AT621 bicolor LED does not effect any external dimensions of the switches or indicators.
- Contact the factory if further details are needed.



$$R = \frac{E - V_F}{I_F}$$

Where: R = Resistor Value (Ohms)
 E = Source Voltage (V)
 V_F = Forward Voltage (V)
 I_F = Forward Current (A)

Effective Date

Changes to AT621 Bicolor LEDs will be effective September 2015.

NIKK
SWITCHES

<http://www.nkkswitches.com> • 1.877.2BUYNKK (228.9655)

7850 East Gelding Drive • Scottsdale, AZ 85260 • Telephone 480.991.0942 • Fax 480.998.1435

Change Notice **YB Series Illuminated Pushbuttons**

Change of Bicolor LED Specification for AT621 2-Volt without Resistor

The AT621 bicolor LEDs will have changes to electrical specifications. These changes will effect all models, both standard and custom, of YB illuminated pushbuttons and indicators. Standard part numbers effected by these changes are listed in the following tables.



AT621 Bicolor LED

YB15 Part Numbers Effected by AT621 Bicolor LED Specification Change

YB15SKW01-2CF02-JB	YB15SKW03-2CF02-JB	YB15SKG01-2CF02-JB	YB15SKG03-2CF02-JB
YB15CKW01-2CF02-JB	YB15CKW03-2CF02-JB	YB15CKG01-2CF02-JB	YB15CKG03-2CF02-JB
YB15RKW01-2CF02-JB	YB15RKW03-2CF02-JB	YB15RKG01-2CF02-JB	YB15RKG03-2CF02-JB
YB15KKW01-2CF02-JB	YB15KKW03-2CF02-JB	YB15KKG01-2CF02-JB	YB15KKG03-2CF02-JB
YB15MKW01-2CF02-JB	YB15MKW03-2CF02-JB	YB15MKG01-2CF02-JB	YB15MKG03-2CF02-JB
YB15NKW01-2CF02-JB	YB15NKW03-2CF02-JB	YB15NKG01-2CF02-JB	YB15NKG03-2CF02-JB
YB15WSKW01-2CF02-JB	YB15WSKW03-2CF02-JB	YB15WSKG01-2CF02-JB	YB15WSKG03-2CF02-JB
YB15WCKW01-2CF02-JB	YB15WCKW03-2CF02-JB	YB15WCKG01-2CF02-JB	YB15WCKG03-2CF02-JB
YB15WRKW01-2CF02-JB	YB15WRKW03-2CF02-JB	YB15WRKG01-2CF02-JB	YB15WRKG03-2CF02-JB

YB16 Part Numbers Effected by AT621 Bicolor LED Specification Change

YB16SKW01-2CF02-JB	YB16SKW03-2CF02-JB	YB16SKG01-2CF02-JB	YB16SKG03-2CF02-JB
YB16CKW01-2CF02-JB	YB16CKW03-2CF02-JB	YB16CKG01-2CF02-JB	YB16CKG03-2CF02-JB
YB16RKW01-2CF02-JB	YB16RKW03-2CF02-JB	YB16RKG01-2CF02-JB	YB16RKG03-2CF02-JB
YB16KKW01-2CF02-JB	YB16KKW03-2CF02-JB	YB16KKG01-2CF02-JB	YB16KKG03-2CF02-JB
YB16MKW01-2CF02-JB	YB16MKW03-2CF02-JB	YB16MKG01-2CF02-JB	YB16MKG03-2CF02-JB
YB16NKW01-2CF02-JB	YB16NKW03-2CF02-JB	YB16NKG01-2CF02-JB	YB16NKG03-2CF02-JB
YB16WSKW01-2CF02-JB	YB16WSKW03-2CF02-JB	YB16WSKG01-2CF02-JB	YB16WSKG03-2CF02-JB
YB16WCKW01-2CF02-JB	YB16WCKW03-2CF02-JB	YB16WCKG01-2CF02-JB	YB16WCKG03-2CF02-JB
YB16WRKW01-2CF02-JB	YB16WRKW03-2CF02-JB	YB16WRKG01-2CF02-JB	YB16WRKG03-2CF02-JB



7850 East Gelding Drive • Scottsdale, AZ 85260 • Telephone 480.991.0942 • Fax 480.998.1435

<http://www.nkkswitches.com> • 1.877.2BUYNKK (228.9655)

Change Notice YB Series Illuminated Pushbuttons

Change of Bicolor LED Specification for AT621 2-Volt without Resistor

YB25 Part Numbers Effected by AT621 Bicolor LED Specification Change

YB25SKW01-2CF02-JB	YB25SKW03-2CF02-JB	YB25SKG01-2CF02-JB	YB25SKG03-2CF02-JB
YB25CKW01-2CF02-JB	YB25CKW03-2CF02-JB	YB25CKG01-2CF02-JB	YB25CKG03-2CF02-JB
YB25RKW01-2CF02-JB	YB25RKW03-2CF02-JB	YB25RKG01-2CF02-JB	YB25RKG03-2CF02-JB
YB25KKW01-2CF02-JB	YB25KKW03-2CF02-JB	YB25KKG01-2CF02-JB	YB25KKG03-2CF02-JB
YB25MKW01-2CF02-JB	YB25MKW03-2CF02-JB	YB25MKG01-2CF02-JB	YB25MKG03-2CF02-JB
YB25NKW01-2CF02-JB	YB25NKW03-2CF02-JB	YB25NKG01-2CF02-JB	YB25NKG03-2CF02-JB
YB25WSKW01-2CF02-JB	YB25WSKW03-2CF02-JB	YB25WSKG01-2CF02-JB	YB25WSKG03-2CF02-JB
YB25WCKW01-2CF02-JB	YB25WCKW03-2CF02-JB	YB25WCKG01-2CF02-JB	YB25WCKG03-2CF02-JB
YB25WRKW01-2CF02-JB	YB25WRKW03-2CF02-JB	YB25WRKG01-2CF02-JB	YB25WRKG03-2CF02-JB

YB26 Part Numbers Effected by AT621 Bicolor LED Specification Change

YB26SKW01-2CF02-JB	YB26SKW03-2CF02-JB	YB26SKG01-2CF02-JB	YB26SKG03-2CF02-JB
YB26CKW01-2CF02-JB	YB26CKW03-2CF02-JB	YB26CKG01-2CF02-JB	YB26CKG03-2CF02-JB
YB26RKW01-2CF02-JB	YB26RKW03-2CF02-JB	YB26RKG01-2CF02-JB	YB26RKG03-2CF02-JB
YB26KKW01-2CF02-JB	YB26KKW03-2CF02-JB	YB26KKG01-2CF02-JB	YB26KKG03-2CF02-JB
YB26MKW01-2CF02-JB	YB26MKW03-2CF02-JB	YB26MKG01-2CF02-JB	YB26MKG03-2CF02-JB
YB26NKW01-2CF02-JB	YB26NKW03-2CF02-JB	YB26NKG01-2CF02-JB	YB26NKG03-2CF02-JB
YB26WSKW01-2CF02-JB	YB26WSKW03-2CF02-JB	YB26WSKG01-2CF02-JB	YB26WSKG03-2CF02-JB
YB26WCKW01-2CF02-JB	YB26WCKW03-2CF02-JB	YB26WCKG01-2CF02-JB	YB26WCKG03-2CF02-JB
YB26WRKW01-2CF02-JB	YB26WRKW03-2CF02-JB	YB26WRKG01-2CF02-JB	YB26WRKG03-2CF02-JB

YB Indicator Part Numbers Effected by AT621 Bicolor LED Specification Change

YB01KW01-2CF02-JB	YB02KW01-2CF02-JB	YB03KW01-2CF02-JB	YB04KW01-2CF02-JB
YB01WKW01-2CF02-JB	YB02WKW01-2CF02-JB	YB03WKW01-2CF02-JB	YB05KW01-2CF02-JB
			YB06KW01-2CF02-JB



7850 East Gelding Drive • Scottsdale, AZ 85260 • Telephone 480.991.0942 • Fax 480.998.1435

<http://www.nkkswitches.com> • 1.877.2BUYNKK (228.9655)