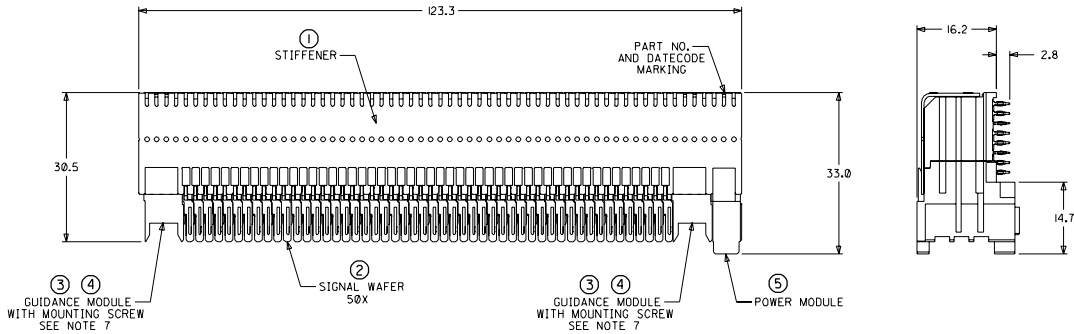
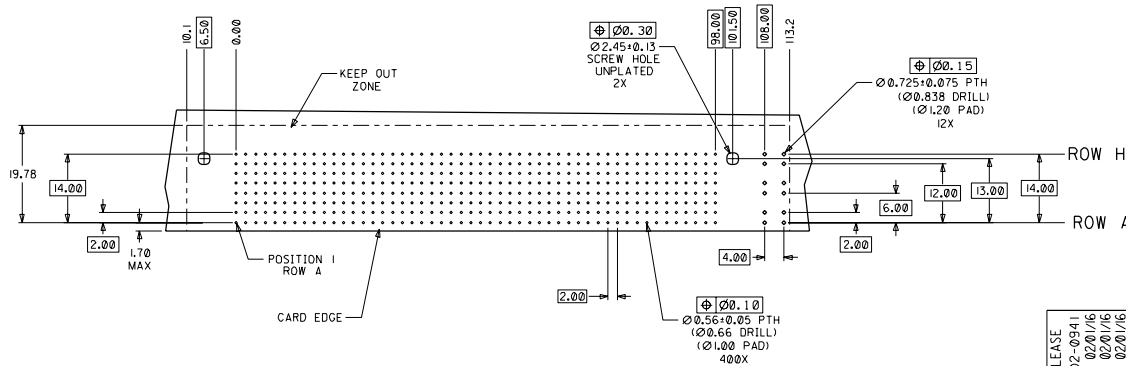
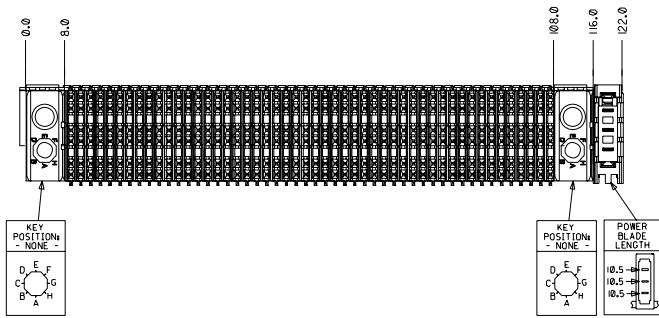


CUSTOMER: BERKELEY



NOTES: (UNLESS OTHERWISE SPECIFIED)

1. MATERIALS: HOUSING - LIQUID CRYSTAL POLYMER (LCP), GLASS-FILLED, UL94V-0, BLACK.
TERMINALS - HIGH PERFORMANCE COPPER ALLOY.
STIFFENER - STAINLESS STEEL.
2. FINISH: SELECTIVE GOLD (Au) IN CONTACT AREA, 0.00076mm MINIMUM THICKNESS; SELECTIVE TIN/LEAD (Sn/Pb) ON PCB TAILS, NICKEL (Ni) OVERALL.
3. REFER TO MOLEX PRODUCT SPECIFICATION PS-74031-999 FOR PERFORMANCE SPECIFICATIONS.
4. REFER TO MOLEX DOCUMENT SD-74681-002 FOR ADDITIONAL DETAIL ON THE HSD8 SIGNAL WAFER.
5. REFER TO MOLEX DOCUMENT SD-74037-006 FOR ADDITIONAL DETAIL ON THE GUIDANCE MODULE.
6. REFER TO MOLEX DOCUMENT SD-74026-002 FOR ADDITIONAL DETAIL ON THE POWER MODULE.
7. MOUNTING SCREWS WILL BE BAGGED WITH EACH CONNECTOR.
8. PARTS ARE PACKAGED IN TUBES PER PK-70873-5041.



DAUGHTERCARD HOLE PATTERN
(CONNECTOR SIDE)

ITEM	PART NUMBER	DESCRIPTION	QTY
1	74046-0123	STIFFENER	1
2	74681-0001	HSD8 WAFER	50
3	74037-0008	POLARIZING/GUIDE MODULE	2
4	73726-0000	GUIDE MODULE MNTG SCREW	2
5	74026-8333	POWER MODULE	1

INITIAL RELEASE EC NO. UDT2002-0941 DRAWN: ATP 02/01/16 CHKD: LAURX 02/01/16 APPR: BIXLER 02/01/16 REV: A	QUALITY SYMBOLS MAJOR: 0 CRITICAL: 0	GENERAL TOLERANCES: (UNLESS SPECIFIED) mm INCH 4 PLACES ±0. -- 2. -- 3 PLACES ±0. -- 2. -- 2 PLACES ±0. -- 2. -- 1 PLACE ±0. -- 2. -- ANGULAR: ± 2°	SCALE: 1:1 DESIGN UNITS: mm INCH THIRD ANGLE PROJECTION DRAWN BY & DATE: ATP 02/01/16 CHECKED BY & DATE: LAURX 02/01/16 APPROVED BY & DATE: BIXLER 02/01/16 CAD FILENAME: SD-74680-108 MATERIAL NO.: 74680-0108 DRAWING NO.: SD-74680-108	DIMENSIONS: mm INCH mm ONLY SHT: 1 REV: 1 REVISION ON CAD ONLY
	TITLE: 8 ROW HSD DAUGHTERCARD ASSEMBLY SALES DRAWING			
	MOLEX INCORPORATED			
	DRAFT WHERE APPLICABLE MUST REMAIN WITHIN DIMENSIONS THIS DRAWING CONTAINS INFORMATION THAT IS PROPRIETARY TO MOLEX INCORPORATED AND SHOULD NOT BE USED WITHOUT WRITTEN PERMISSION.			SHEET NO. 1 OF 1 SIZE D