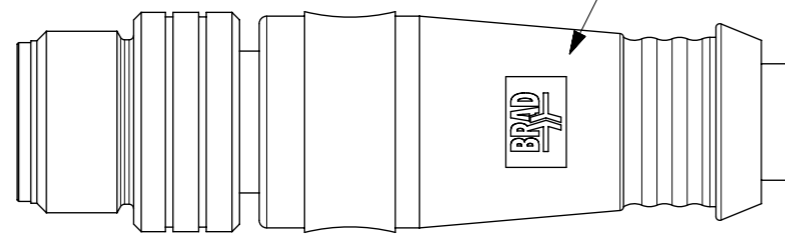
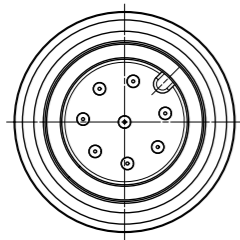
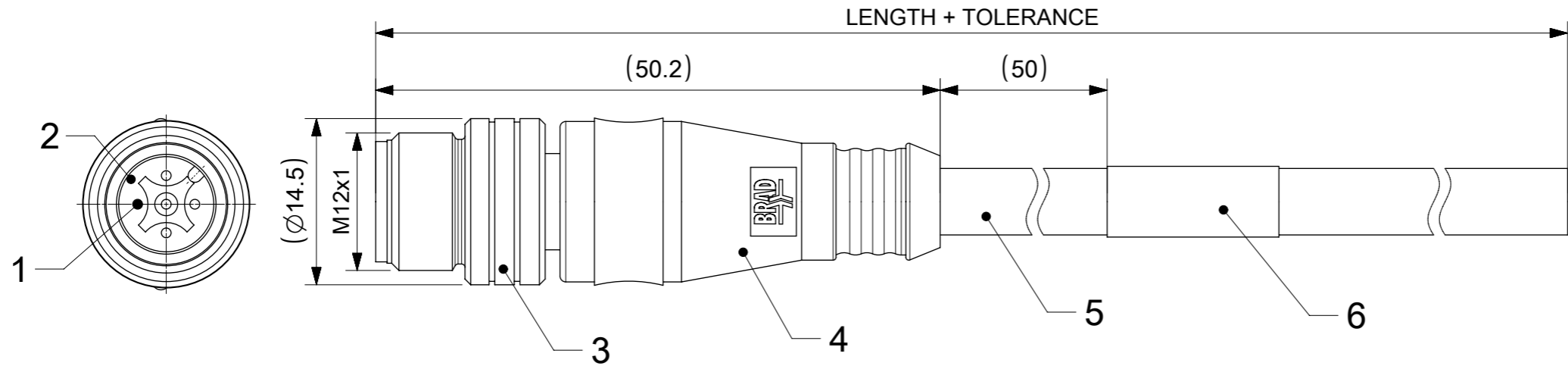


MALE PLUG M12 STRAIGHT



NOTES:

RATED VOLTAGE: 3, 4 contacts 250V
 5 contacts 60V
 8 contacts 30V
 RATED CURRENT: 3, 4, 5 contacts 4A
 8 contacts 2A
 PROTECTION CLASS: IP 67
 TEMPERATURE: -25°C / +85°C

CONTACTS POSITION FRONT VIEW:

| 3 CONTACTS | | 4 CONTACTS | | 5 CONTACTS | | 8 CONTACTS | |
|--------------------------------------|-------|------------|-------|------------|-------|------------|--------|
| | | | | | | | |
| PIN | WIRE | PIN | WIRE | PIN | WIRE | PIN | WIRE |
| 1 | BROWN | 1 | BROWN | 1 | BROWN | 1 | WHITE |
| 2 | --- | 2 | WHITE | 2 | WHITE | 2 | BROWN |
| 3 | BLUE | 3 | BLUE | 3 | BLUE | 3 | GREEN |
| 4 | BLACK | 4 | BLACK | 4 | BLACK | 4 | YELLOW |
| 5 | --- | 5 | --- | 5 | GREY | 5 | GREY |
| | | | | | | 6 | PINK |
| | | | | | | 7 | BLUE |
| | | | | | | 8 | RED |
| SHIELD CONNECTED TO THE COUPLING NUT | | | | | | | |
| CODING REQUIRED TO IEC 61076-2-101 | | | | | | | |

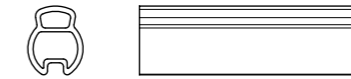
FOR OPTIONS SEE - NUMERICAL CODE - ON SHEET 2

| 6 | 1 | LABEL YELLOW | VINYL | --- |
|------|---------------|---------------------------|-------------|----------------------|
| 5 | - | CABLE | SEE SHEET 2 | --- |
| 4 | - | OVERMOLDING (SEE SHEET 2) | TPU | --- |
| 3 | 1 | COUPLING NUT MALE | SEE SHEET 2 | --- |
| 2 | 1 | INSERT MALE BLACK | PUR | --- |
| 1 | 3 / 4 / 5 / 8 | CONTACT M12 MALE | BRASS | SELECTIVE Au OVER Ni |
| ITEM | QTY. | DESCRIPTION | MATERIAL | FINISH |

THIS DRAWING CONTAINS INFORMATION THAT IS PROPRIETARY TO MOLEX ELECTRONIC TECHNOLOGIES, LLC AND SHOULD NOT BE USED WITHOUT WRITTEN PERMISSION

| | | | | | | | |
|--|------------------------|---|------------|-----------------|----------------|----------|--------------|
| DIMENSION UNITS | SCALE | CURRENT REV DESC: REMOVED OBSOLETE PART NUMBER AS PER PCN#512871. | | | | | |
| mm | 2:1 | CSE M12 XP AC MA STR XM SE SH PRODUCT CUSTOMER DRAWING | | | | | |
| GENERAL TOLERANCES (UNLESS SPECIFIED) | | | | | | | |
| ANGULAR TOL | ± ° | | | | | | |
| 4 PLACES | ± | | | | | | |
| 3 PLACES | ± | | | | | | |
| 2 PLACES | ± | EC NO: 732259 | 2022/12/14 | DOCUMENT NUMBER | DOC TYPE | DOC PART | REVISION |
| 1 PLACE | ± | DRWN: AKONDRACIUK | 2017/07/12 | 1200100015 | PSD | 000 | B4 |
| 0 PLACES | ± | APPR: DSTACHOWIAK | 2017/07/17 | | | | |
| DRAFT WHERE APPLICABLE MUST REMAIN WITHIN DIMENSIONS | THIRD ANGLE PROJECTION | DRAWING | SERIES | MATERIAL NUMBER | CUSTOMER | | SHEET NUMBER |
| | | A3-SIZE | 120010 | SEE TABLE | GENERAL MARKET | | 1 OF 3 |

ENGINEERING NO. - NUMERICAL CODE (Available parts see PART LIST table. Others on request).



OPTIONS

8 0 X S 0 6 X X X X X X X X

H= 2 pcs. of I/D Carrier
PVC Transparent

80=M12x1
Single ended

Contacts:
3=3 Contacts
4=4 Contacts
5=5 Contacts
8=8 Contacts

Heads style:
S06 =Plug Shield Male
Straight

Cable type: See Table

Units:
M=Meter
C=Centimeter

Length
Examples:
005=0.5 unit
010=1 unit
100=10 units

Overmold color:
Blank=Yellow TPU for cables S20,S26
Blank=Black TPU for cables P19,P20, I26
A=Grey / G=Black / Y=Yellow

Coupling Nut:
3=Knurled Brass Ni Plated for cables P19, P20, S20
1=Hexagonal Stainless steel
5=Knurled Derlin
7=Knurled Brass Ni Plated, Teflon Coated
Blank=7 for cables I26, S26
9=Knurled / Hexagonal Brass Ni Plated SW13

CABLE INFORMATION (for more information see Cable Data Sheet).

| CABLE TYPE | NO. OF WIRES | CROSS SECTION | CABLE JACKET | UL | CSA | STATIC: TEMP. / BENDING RADIUS | DYNAMIC: TEMP. / BENDING RADIUS | DRAG CHAIN | SHIELD |
|------------|--------------|---------------------|----------------|--------------|-----------------------|--------------------------------|---------------------------------|---------------------------|--------|
| P19 | 8 | 0.25mm ² | PUR BLACK | - | - | -40°C to +90°C, 7.5xO.D. | -15°C to +90°C, 12.5xO.D. | 2 000 000 cycles, 15xO.D. | YES |
| P20 | 3 / 4 / 5 | 0.34mm ² | PUR BLACK LS0H | - | - | -40°C to +90°C | -25°C to +90°C | - | YES |
| S20 | 3 / 4 / 5 | 0.34mm ² | PVC YELLOW | UL 2661/1731 | C22.2 II A 105°C/300V | -30°C to +105°C | - | - | YES |
| S26 | 5 | 0.34mm ² | PVC YELLOW | UL 2661/1731 | C22.2 II A 105°C/300V | -30°C to +105°C | - | - | YES |
| I26 | 5 | 0.34mm ² | PVC CEI GREY | - | - | -30°C to +70°C | -5°C to +70°C | - | YES |

CABLE LENGTH TOLERANCES


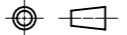
| OVER | UP TO AND INCLUDING | TOLERANCES [mm] |
|---------|---------------------|------------------------|
| 0 | 305mm | +19 |
| 305mm | 915mm | +45 |
| 915mm | 1830mm | +56 |
| 1830mm | 3660mm | +89 |
| 3660mm | 7320mm | +165 |
| 7320mm | 14640mm | +317 |
| 14640mm | 30500mm | +610 |
| 30500mm | > | +2% of finished length |

THIS DRAWING CONTAINS INFORMATION THAT IS PROPRIETARY TO MOLEX ELECTRONIC TECHNOLOGIES, LLC AND SHOULD NOT BE USED WITHOUT WRITTEN PERMISSION

| | | | | | | |
|--|------------------------|---|----------------------------|-----------------|----------------|--------------|
| DIMENSION UNITS mm | SCALE 1:1 | CURRENT REV DESC: REMOVED OBSOLETE PART NUMBER AS PER PCN#512871. | molex | | | |
| GENERAL TOLERANCES (UNLESS SPECIFIED) | | CSE M12 XP AC MA STR XM SE SH | | | | |
| ANGULAR TOL ± ° | | EC NO: 732259 | PRODUCT CUSTOMER DRAWING | | | |
| 4 PLACES ± | | DRWN: SANTHN 2022/12/14 | DOCUMENT NUMBER | | | |
| 3 PLACES ± | | CHK'D: GGA 2022/12/21 | 1200100015 | | | |
| 2 PLACES ± | | APPR: GGA 2022/12/21 | PSD 000 B4 | | | |
| 1 PLACE ± | | INITIAL REVISION: | DOC TYPE DOC PART REVISION | | | |
| 0 PLACES ± | | DRWN: AKONDRACIUK 2017/07/12 | 1200100015 | | | |
| | | APPR: DSTACHOWIAK 2017/07/17 | GENERAL MARKET | | | |
| DRAFT WHERE APPLICABLE MUST REMAIN WITHIN DIMENSIONS | THIRD ANGLE PROJECTION | DRAWING | SERIES | MATERIAL NUMBER | CUSTOMER | SHEET NUMBER |
| | | A3-SIZE | 120010 | SEE TABLE | GENERAL MARKET | 2 OF 3 |

PART LIST

| No | Part No | Engineering No | Cable Length [m] |
|----|------------|-----------------|------------------|
| 1 | 1200698324 | 803S06P20M020 | 2 |
| 2 | 1200100012 | 804S06P20M050 | 5 |
| 3 | 1200698110 | 804S06P20M200 | 20 |
| 4 | 1200698444 | 804S06P20M030 | 3 |
| 5 | 1200698470 | 804S06P20M015 | 1.5 |
| 6 | 1200698480 | 804S06P20M300 | 30 |
| 7 | 1200698084 | 804S06S20M010 | 1 |
| 8 | 1200698443 | 804S06P20M010 | 1 |
| 9 | 1200698472 | 804S06S20M300 | 30 |
| 10 | 1200100015 | 805S06P20M020 | 2 |
| 11 | 1200698025 | 805S06P20M050 | 5 |
| 12 | 1200698026 | 805S06P20M100 | 10 |
| 13 | 1200698101 | 805S06P20C350 | 0.35 |
| 14 | 1200698149 | 805S06P20M0201G | 2 |
| 15 | 1200698150 | 805S06P20M0501G | 5 |
| 16 | 1200698365 | 805S06P20M050H | 5 |
| 17 | 1200698834 | 805S06P20M015 | 1.5 |
| 18 | 1200690196 | 808S06P19M080 | 8 |
| 19 | 1200695051 | 808S06P19M100 | 10 |
| 20 | 1200698152 | 808S06P19M0501G | 5 |
| 21 | 1200698761 | 808S06P19M200 | 20 |
| 22 | 1200699418 | 808S06P19M015 | 1.5 |
| 23 | 1200699419 | 808S06P19M030 | 3 |
| 24 | 1200698085 | 808S06S19M010 | 1 |
| 25 | 1200698076 | 804S06P20M020 | 2 |
| 26 | 1200699704 | 805S06P20M004 | 0.4 |

| | | | | | | | | | |
|---|-------|---|------------|--------|---|----------------|----------|--------------|----------|
| THIS DRAWING CONTAINS INFORMATION THAT IS PROPRIETARY TO MOLEX ELECTRONIC TECHNOLOGIES, LLC AND SHOULD NOT BE USED WITHOUT WRITTEN PERMISSION | | | | | | | | | |
| DIMENSION UNITS | SCALE | CURRENT REV DESC: REMOVED OBSOLETE PART NUMBER AS PER PCN#512871. | | |  | | | | |
| mm | 1:1 | | | | | | | | |
| GENERAL TOLERANCES (UNLESS SPECIFIED) | | | | | CSE M12 XP AC MA STR XM SE SH | | | | |
| ANGULAR TOL | ± ° | | | | PRODUCT CUSTOMER DRAWING | | | | |
| 4 PLACES | ± | EC NO: 732259 | | | | | | | |
| 3 PLACES | ± | DRWN: SANTHN | 2022/12/14 | | | | | | |
| 2 PLACES | ± | CHK'D: GGA | 2022/12/21 | | | | | | |
| 1 PLACE | ± | APPR: GGA | 2022/12/21 | | | | | | |
| 0 PLACES | ± | INITIAL REVISION: | | | DOCUMENT NUMBER | | DOC TYPE | DOC PART | REVISION |
| | | DRWN: AKONDRACIUK | 2017/07/12 | | 1200100015 | | PSD | 000 | B4 |
| | | APPR: DSTACHOWIAK | 2017/07/17 | | | | | | |
| DRAFT WHERE APPLICABLE MUST REMAIN WITHIN DIMENSIONS | | THIRD ANGLE PROJECTION | DRAWING | SERIES | MATERIAL NUMBER | CUSTOMER | | SHEET NUMBER | |
| | |  | A3-SIZE | 120010 | SEE TABLE | GENERAL MARKET | | 3 OF 3 | |

| | | | | |
|-----------------|----|--------------|------------|----------|
| DOCUMENT STATUS | P1 | RELEASE DATE | 2022/12/21 | 07:37:44 |
|-----------------|----|--------------|------------|----------|