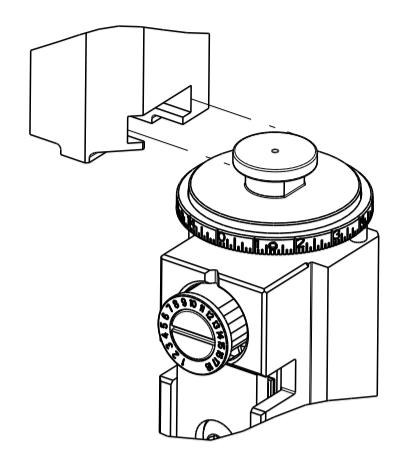


| PART NUMBER | REVISION | DESCRIPTION | FEED TYPE |
|-------------|----------|---------------------------------|-----------|
| 2266445-2 | D | FINE CRIMP HEIGHT ADJUST | PNEUMATIC |
| 7-2266445-2 | D | PNEUMATIC AND CRIMP TOOLING KIT | PNEUMATIC |
| 7-2266445-7 | B | CRIMP TOOLING KIT | - |

ATLANTIC VERSION TERMINATOR INTERFACE ADAPTER

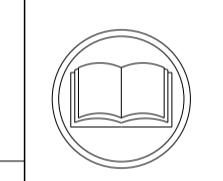


| APPLICATOR DATA | | |
|-----------------|----------------|------|
| CRIMP | SIZE | TYPE |
| WIRE | 2.79 mm [.110] | F |
| INSUL | 3.81 mm [.150] | OV |

APPLICATOR INSTRUCTIONS 408-35042

| TERMINAL DATA: FCI TERMINAL FCI CRIMP SPECIFICATION | | | |
|---|------------------------------|-------------|--------------|
| TERMINAL NAME: 2.8X0.8 FEMALE TERMINAL | | | |
| WIRE STRIP LENGTH | INSULATION DIAMETER RANGE | | |
| 4.31-4.70 mm [.170-.185 IN] | Ø2.10-3.00 mm [.083-.118 IN] | | |
| TERMINAL APPLICATION SPECIFICATION | FCI SPEC Rev F | - | - |
| TERMINALS APPLIED | | | |
| TE TERMINAL | FCI TERMINAL | TE TERMINAL | FCI TERMINAL |
| 2113553-1 | 211CC3S2150 | 2113553-4 | 211CC3S2190 |
| 2113553-2 | 211CC3S2160 | 2082129-1 | 211CC3S2160 |
| 2113553-3 | 211CC3S2460 | 2082129-2 | 211CC3S2150 |

| WIRE SIZE | CRIMP HEIGHT mm [INCH] | CRIMP HEIGHT REFERENCE SETTING |
|---------------|----------------------------|--------------------------------|
| 2.50mm2 | 1.77+/-0.05 [.070+/-0.002] | 3.2 |
| 2.00mm2 | 1.54+/-0.05 [.061+/-0.002] | 5.0 |
| 1.50mm2 | 1.47+/-0.05 [.058+/-0.002] | 6.2 |
| 0.35+1.00 mm2 | 1.40+/-0.05 [.055+/-0.002] | 7.0 |



- 1 RECOMMENDED SPARE PARTS
- 2 REFER TO SUPPLIED INSTRUCTION SHEET FOR CLEANING, LUBRICATION AND STORAGE OF APPLICATOR.
- 3 APPLY PART NUMBER 2-23419-6 LOCTITE TO THREADS OF ITEM 242.
- 4 CRIMP HEIGHT REFERENCE SETTING WAS THE SETTING USED WHEN THE APPLICATOR WAS QUALIFIED AT THE FACTORY. ADJUSTMENT MAY BE NECESSARY WHEN RUNNING APPLICATOR IN THE FIELD.
- 5 TERMINAL PITCH NOT COMPATIBLE WITH MECHANICAL FEED.
- 6. UNLESS SPECIFIED OTHERWISE TORQUE VALUES SHALL BE USED PER DOCUMENT, 101-35000.

***WARNING**
ON INSTALLATION, SET WIRE DISC TO CRIMP HEIGHT REFERENCE SETTING FOR LARGEST WIRE SIZE. CRIMP HEIGHT REFERENCE SETTINGS GREATER THAN THE VALUE SHOWN MAY CAUSE DAMAGE TO THE CRIMP TOOLING, REFER TO THE INSTRUCTION SHEET FOR PROPER SETUP AND ADJUSTMENTS.

| LOC | DIST | REVISIONS | | | | | |
|-----|------|-----------|-----|---------------|-----------|-----|------|
| A | 66 | P | LTN | DESCRIPTION | DATE | OWN | APVD |
| | | A | | RELEASED | 02OCT2014 | LG | TE |
| | | B | | ECR-18-003114 | 01MAR2016 | MZ | CT |
| | | C | | ECR-18-8923 | 11JUN2018 | VLA | JDG |
| | | D | | ECR-20-013395 | 21SEP2020 | TB | RK |

| | | | | | |
|---|-----|-----|-------------|-------------------------------------|-----|
| - | 1 | 1 | 2119641-1 | FEED CAM, AIR FEED | 248 |
| - | 1 | 1 | 2119082-4 | CAM, SNAIL, INSULATION ADJUSTMENT | 244 |
| - | 1 | 1 | 2079764-1 | WASHER, WAVE SPRING, CREST-TO-CREST | 243 |
| - | 1 | 1 | 2119083-1 | RETAINER, INSULATION DIAL | 242 |
| - | 1 | 1 | 7-18023-7 | SCR, SKT HD CAP M3 X 4.0 | 241 |
| - | 1 | 1 | 2844940-1 | AIR FEED MODULE | 238 |
| - | REF | REF | 994970-2 | COUNTER, MAGNETIC | 164 |
| - | 1 | 1 | 2844908-1 | SCREW, LOCKING | 99 |
| - | 1 | 1 | 2844907-1 | POST, LOCKING | 98 |
| - | 1 | 1 | 318563-1 | GUARD, FRONT CHIP | 89 |
| - | 1 | 1 | 455888-4 | SPACER, CRIMPER | 82 |
| - | 1 | 1 | 1803607-3 | DOCUMENTATION PACKAGE | 71 |
| - | 1 | 1 | 2119740-1 | TAG, IDENTIFICATION | 67 |
| - | 2 | 2 | 2168078-1 | SCREW, DRIVE, RH, RoHS, 2 x .188 | 66 |
| - | 1 | 1 | 2168083-2 | SCR, SKT HD CAP, RoHS, M4 X 8.0 | 60 |
| - | 1 | 1 | 5-18022-5 | SCR, HEX HD CAP, M4 X 6.0 | 59 |
| - | 1 | 1 | 1338685-1 | PAWL, FEED | 56 |
| - | 4 | 4 | 2168083-3 | SCR, SKT HD CAP, RoHS, M4 X 12.0 | 54 |
| - | 2 | 2 | 1-2168083-0 | SCR, SKT HD CAP, RoHS, M4 X 10 | 53 |
| - | 1 | 1 | 1803382-6 | HOLD DOWN, SPRING LOADED | 50 |
| - | 1 | 1 | 18023-9 | SCR, SKT HD CAP M4 X 6.0 | 49 |
| - | 1 | 1 | 1803583-9 | APPLICATOR BASIC ASSEMBLY, SF | 46 |
| - | 1 | 1 | 1803515-1 | RAM ASSEMBLY, SF ATLANTIC | 44 |
| - | 1 | 1 | 1803602-1 | SCR, BHSC, RoHS (M8 X 25) | 41 |
| - | 1 | 1 | 1-1752356-8 | SUPPORT, TERMINAL | 34 |
| - | 2 | 2 | 2079383-5 | SCR, BHSC, RoHS (M4 X 20) | 33 |
| - | 2 | 2 | 3-2844962-0 | SPACER, CYLINDRICAL, STRIP GUIDE | 30 |
| - | 1 | 1 | 2844992-2 | ASSEMBLY, STRIP GUIDE | 29 |
| - | 1 | 1 | 455888-3 | SPACER, CRIMPER | 28 |
| - | 1 | 1 | 1320928-2 | STRIP GUIDE | 24 |
| - | 1 | 1 | 2168083-2 | SCR, SKT HD CAP, RoHS, M4 X 8.0 | 21 |
| - | 2 | 2 | 1-18028-2 | WASHER, FLAT, REG M4 | 20 |
| - | 1 | 1 | 2119533-1 | STRIPPER, SIDE FEED | 19 |
| - | 1 | 1 | 2119806-1 | INSERT, SHEAR | 13 |
| - | 1 | 1 | 3-22280-3 | SPRING, COMPRESSION | 12 |
| - | 1 | 1 | 1-356885-4 | STOP, SHEAR | 11 |
| - | 1 | 1 | 2119805-1 | SHEAR HOLDER, FRONT | 10 |
| - | 1 | 1 | 454276-5 | FLOATING SHEAR, FRONT | 9 |
| - | 1 | 2 | 1-1633923-5 | ANVIL, COMBINATION | 8 |
| - | - | - | - | - | 7 |
| - | - | - | - | - | 6 |
| - | 1 | 1 | 2119757-8 | DEPRESSOR, SHEAR | 5 |
| - | 1 | 1 | 4-238011-7 | BLOCK, CRIMPER SPACER | 4 |
| - | 1 | 2 | 5-2119785-8 | CRIMPER, INSULATION OVERLAP PREMIUM | 3 |
| - | 1 | 1 | 455888-4 | SPACER, CRIMPER | 2 |
| - | 1 | 2 | 7-456408-2 | CRIMPER, WIRE PREMIUM | 1 |

ATLANTIC VERSION
Shown on sheets 1 of 4 & 2 of 4
(Pacific version shown on sheets 3 of 4 & 4 of 4)

| DIMENSIONS: | | TOLERANCES UNLESS OTHERWISE SPECIFIED: | | MATERIAL: | | FINISH: | |
|-------------|---------|--|---------|-----------|---------|---------|--------|
| mm | 0 PLC ± | 1 PLC ± | 2 PLC ± | 3 PLC ± | 4 PLC ± | ANGLES | FINISH |
| | | | | | | | |

| ITEM NO | PART NO | DESCRIPTION |
|----------|---------|-------------|
| -77-72-2 | | |

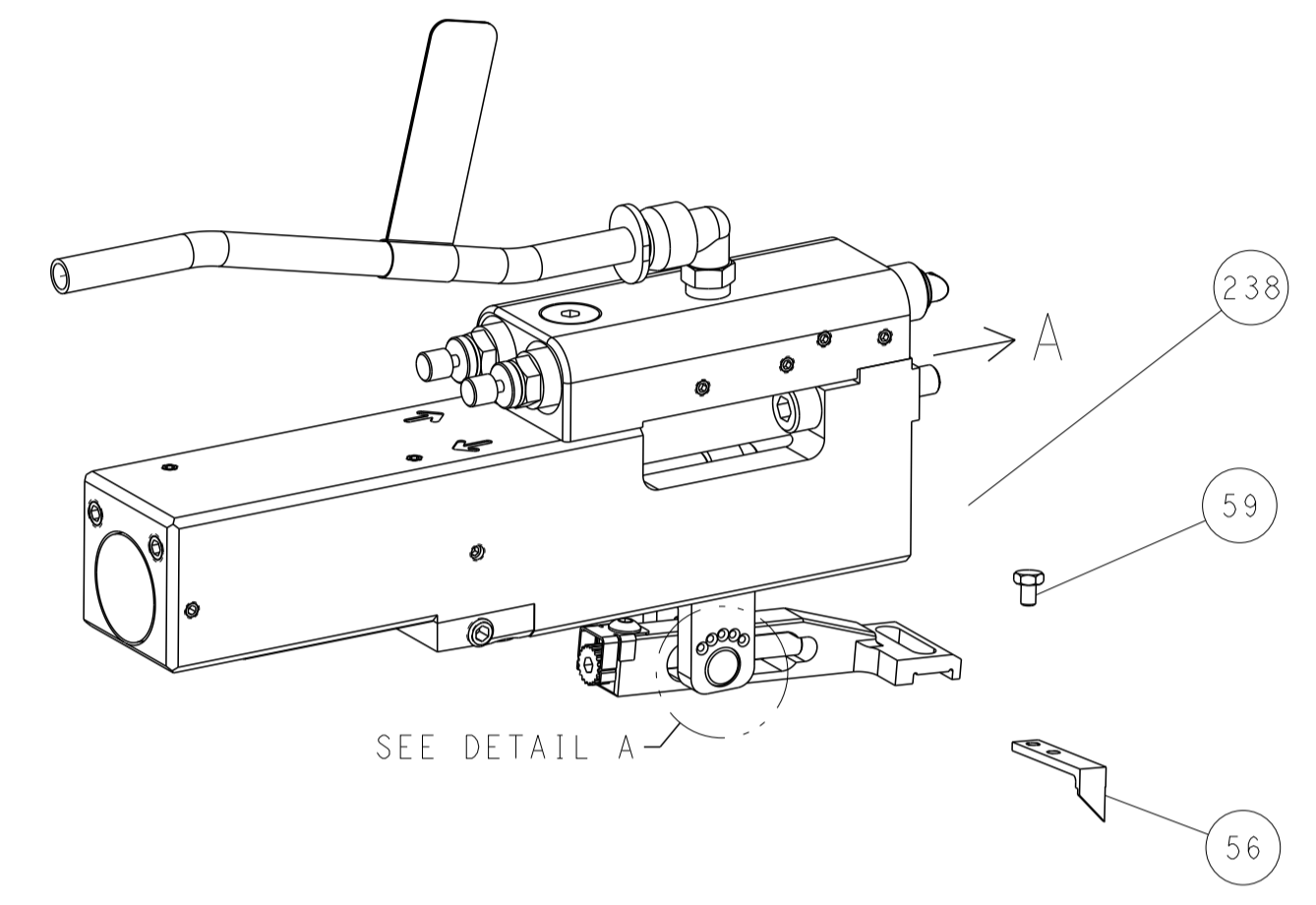
| | | |
|------|--------|--------------|
| OWN | J. HOU | 15AUGUST2014 |
| CHK | Y. YIN | 15AUGUST2014 |
| APVD | J. GUO | 15AUGUST2014 |

| | | | |
|------|----------------------------|------------|---------------|
| NAME | Ocean Side Feed Applicator | | |
| SIZE | CAGE CODE | DRAWING NO | RESTRICTED TO |
| A1 | 00779 | 2266445 | |

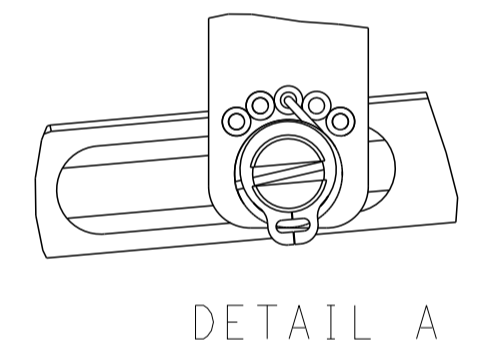
Customer Accessible Production Drawing SCALE 1:2 SHEET 1 OF 4 REV D

| LOC | DIST | REVISIONS | | | | | |
|-----|------|-----------|-----|-------------|------|-----|------|
| | | P | LTN | DESCRIPTION | DATE | OWN | APVD |
| A | 66 | - | - | SEE SHEET 1 | - | - | - |
| | | | | | | | |
| | | | | | | | |

FEED TYPE PNEUMATIC

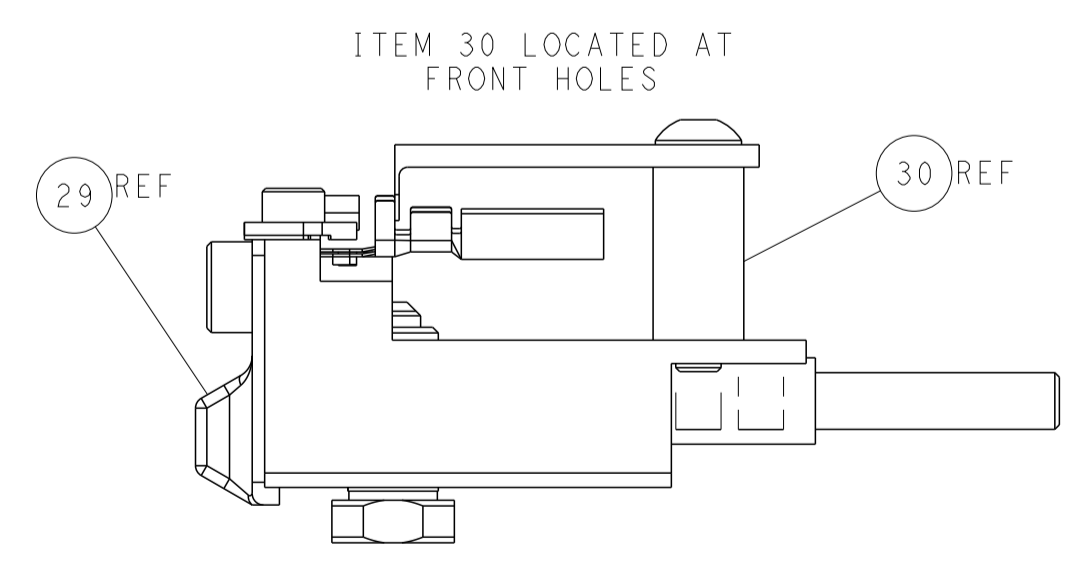
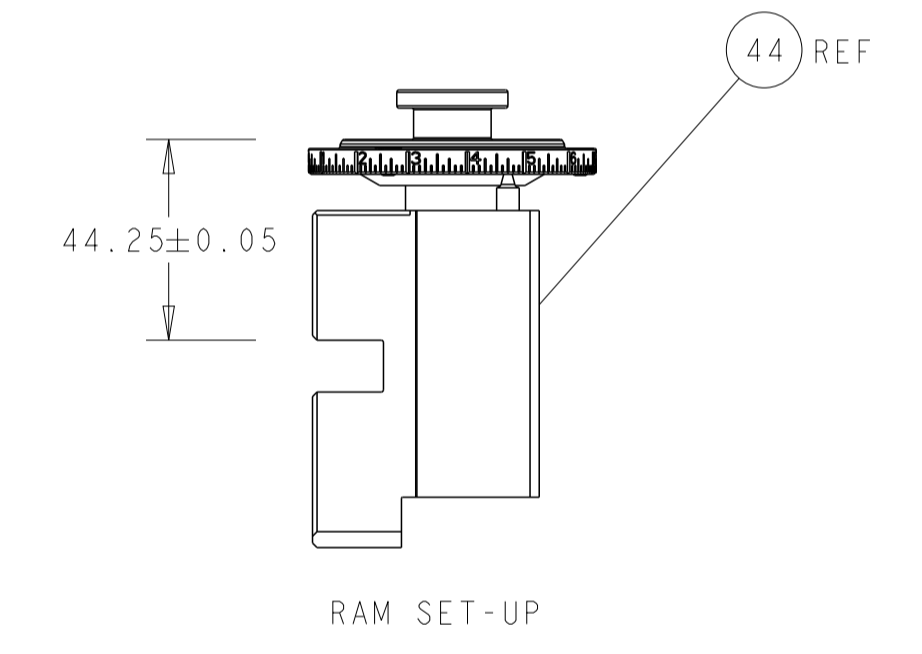
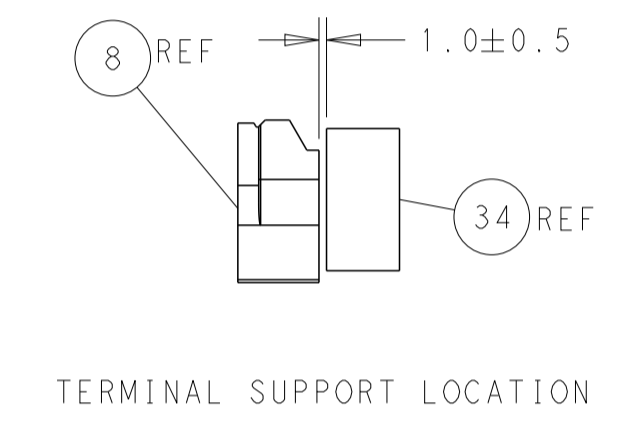
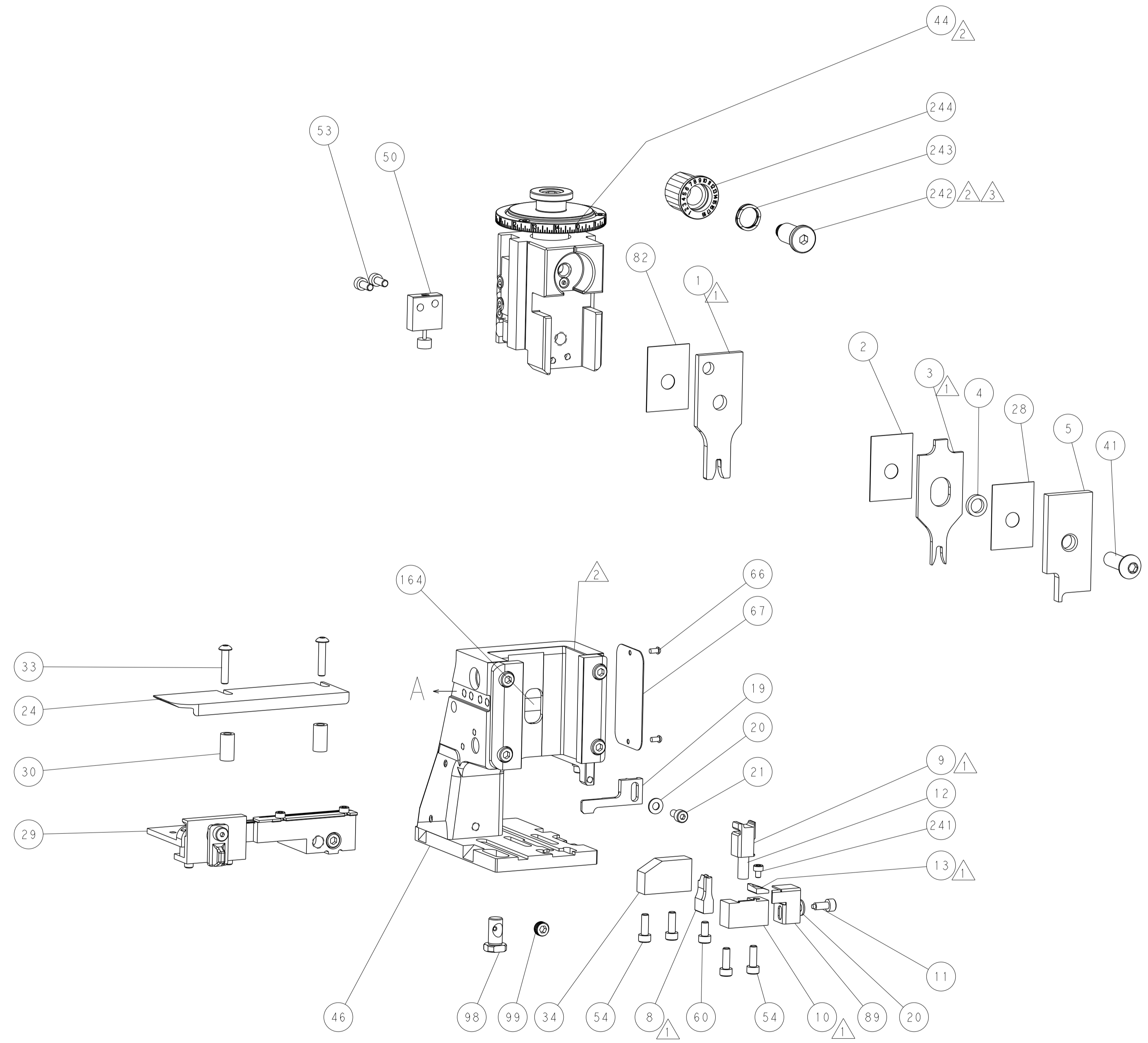
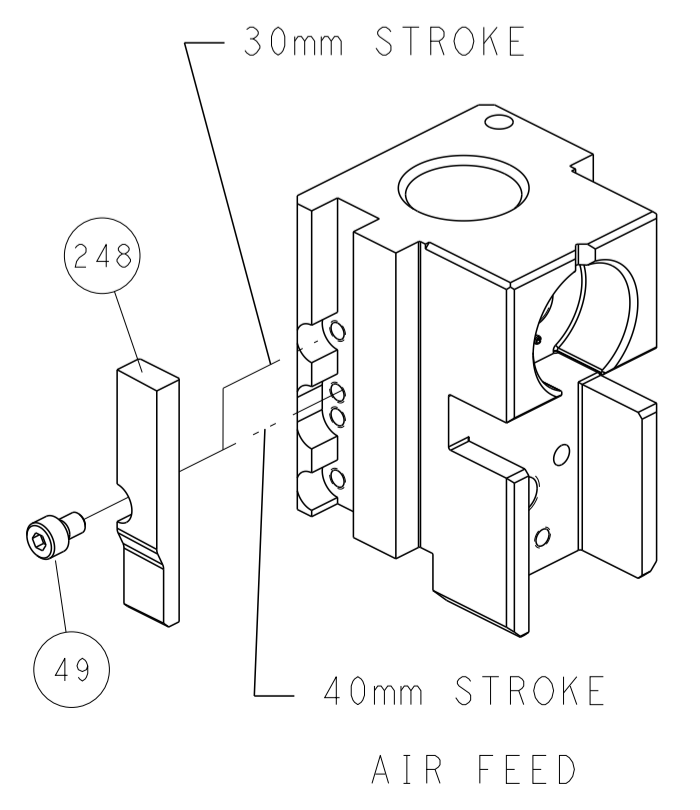


FEED SPRING SETTING POSITION (SHOWN FROM REAR SIDE)



DETAIL A

CAM POSITION



ATLANTIC VERSION
 Shown on sheets 1 of 4 & 2 of 4
 (Pacific version shown on sheets 3 of 4 & 4 of 4)

| | | | | | | | |
|-------------|----------|--|---------|--------------------------|--|---------------------------|-----------------------|
| DIMENSIONS: | | TOLERANCES UNLESS OTHERWISE SPECIFIED: | | DWG: J.HOU 15AUGUST2014 | | TE Connectivity | |
| mm | 0 PLC ± | 1 PLC ± | 2 PLC ± | 3 PLC ± | 4 PLC ± | Harrisburg, PA 17105-3608 | |
| | ANGLES ± | FINISH | | CHK: Y.YIN 15AUGUST2014 | NAME: Ocean Side Feed Applicator | | |
| MATERIAL: | | | | APVD: H.GUO 15AUGUST2014 | SIZE: A1 | CAGE CODE: 00779 | DRAWING NO: C=2266445 |
| | | | | PRODUCT SPEC | RESTRICTED TO: | | |
| | | | | APPLICATION SPEC | SCALE: 1:2 | SHEET: 2 OF 4 | REV: D |
| | | | | WEIGHT: | Customer Accessible Production Drawing | | |

| PART NUMBER | REVISION | DESCRIPTION | FEED TYPE |
|-------------|----------|--------------------------|-----------|
| 2-2266445-2 | D | FINE CRIMP HEIGHT ADJUST | PNEUMATIC |
| 7-2266445-7 | B | CRIMP TOOLING KIT | - |

| APPLICATOR DATA | | |
|-----------------|----------------|------|
| CRIMP | SIZE | TYPE |
| WIRE | 2.79 mm [.110] | F |
| INSUL | 3.81 mm [.150] | OV |

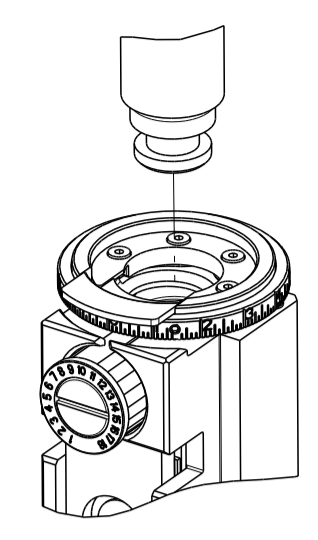
APPLICATOR INSTRUCTIONS
408-35042

| TERMINAL DATA: FCI TERMINAL | | FCI CRIMP SPECIFICATION | |
|--|----------------|------------------------------|--------------|
| TERMINAL NAME: 2.8X0.8 FEMALE TERMINAL | | | |
| WIRE STRIP LENGTH | | INSULATION DIAMETER RANGE | |
| 4.31-4.70 mm [.170-.185 IN] | | Ø2.10-3.00 mm [.083-.118 IN] | |
| TERMINAL APPLICATION SPECIFICATION | FCI SPEC Rev F | - | - |
| TERMINALS APPLIED ⁵ | | | |
| TE TERMINAL | FCI TERMINAL | TE TERMINAL | FCI TERMINAL |
| 2113553-1 | 211CC3S2150 | 2113553-4 | 211CC3S2190 |
| 2113553-2 | 211CC3S2160 | 2082129-1 | 211CC3S2160 |
| 2113553-3 | 211CC3S2460 | 2082129-2 | 211CC3S2150 |

| WIRE SIZE | CRIMP HEIGHT mm [INCH] | CRIMP HEIGHT REFERENCE SETTING |
|---------------------------|----------------------------|--------------------------------|
| 2.50mm ² | 1.77+/-0.05 [.070+/- .002] | 3.2 |
| 2.00mm ² | 1.54+/-0.05 [.061+/- .002] | 5.0 |
| 1.50mm ² | 1.47+/-0.05 [.058+/- .002] | 6.2 |
| 0.35+1.00 mm ² | 1.40+/-0.05 [.055+/- .002] | 7.0 |

- RECOMMENDED SPARE PARTS
- REFER TO SUPPLIED INSTRUCTION SHEET FOR CLEANING, LUBRICATION AND STORAGE OF APPLICATOR.
- APPLY PART NUMBER 2-23419-6 LOCTITE TO THREADS OF ITEM 242.
- CRIMP HEIGHT REFERENCE SETTING WAS THE SETTING USED WHEN THE APPLICATOR WAS QUALIFIED AT THE FACTORY. ADJUSTMENT MAY BE NECESSARY WHEN RUNNING APPLICATOR IN THE FIELD.
- TERMINAL PITCH NOT COMPATIBLE WITH MECHANICAL FEED.
- 6. UNLESS SPECIFIED OTHERWISE TORQUE VALUES SHALL BE USED PER DOCUMENT, 101-35000.

PACIFIC VERSION TERMINATOR INTERFACE ADAPTER



***WARNING**
 ON INSTALLATION, SET WIRE DISC TO CRIMP HEIGHT REFERENCE SETTING FOR LARGEST WIRE SIZE. CRIMP HEIGHT REFERENCE SETTINGS GREATER THAN THE VALUE SHOWN MAY CAUSE DAMAGE TO THE CRIMP TOOLING, REFER TO THE INSTRUCTION SHEET FOR PROPER SETUP AND ADJUSTMENTS.

PACIFIC VERSION
 Shown on sheets 3 of 4 & 4 of 4
 (Atlantic version shown on sheets 1 of 4 & 2 of 4)

| LOC | DIST | REVISIONS | | | | | |
|-----|------|-----------|-----|-------------|------|-----|------|
| A | 66 | P | LTN | DESCRIPTION | DATE | OWN | APVD |
| - | - | - | - | SEE SHEET 1 | - | - | - |

| | | | | |
|---|-----|-------------|-------------------------------------|-----|
| - | 1 | 2119082-4 | CAM, SNAIL, INSULATION ADJUSTMENT | 244 |
| - | 1 | 2079764-1 | WASHER, WAVE SPRING, CREST-TO-CREST | 243 |
| - | 1 | 2119083-1 | RETAINER, INSULATION DIAL | 242 |
| - | 1 | 7-18023-7 | SCR, SKT HD CAP M3 X 4.0 | 241 |
| - | 1 | 2844940-1 | AIR FEED MODULE | 238 |
| - | REF | 994970-2 | COUNTER, MAGNETIC | 164 |
| - | 1 | 2119641-2 | FEED CAM, AIR FEED | 151 |
| - | 1 | 2168083-8 | SCR, SKT HD CAP, RoHS, M4 X 16 | 144 |
| - | 4 | 2168083-9 | SCR, SKT HD CAP, RoHS, M4 X 20 | 143 |
| - | 1 | 1-1803583-0 | APPLICATOR BASIC ASSEMBLY, SF | 141 |
| - | 1 | 1803516-1 | RAM ASSEMBLY, SF PACIFIC | 140 |
| - | 1 | 2844908-1 | SCREW, LOCKING | 99 |
| - | 1 | 2844907-1 | POST, LOCKING | 98 |
| - | 1 | 318563-1 | GUARD, FRONT CHIP | 89 |
| - | 1 | 455888-4 | SPACER, CRIMPER | 82 |
| - | 1 | 1803607-3 | DOCUMENTATION PACKAGE | 71 |
| - | 1 | 2119740-1 | TAG, IDENTIFICATION | 67 |
| - | 2 | 2168078-1 | SCREW, DRIVE, RH, RoHS, 2 x .188 | 66 |
| - | 1 | 5-18022-5 | SCR, HEX HD CAP, M4 X 6.0 | 59 |
| - | 1 | 1338685-1 | PAWL, FEED | 56 |
| - | 2 | 1-2168083-0 | SCR, SKT HD CAP, RoHS, M4 X 10 | 53 |
| - | 1 | 1803382-6 | HOLD DOWN, SPRING LOADED | 50 |
| - | 1 | 18023-9 | SCR, SKT HD CAP M4 X 6.0 | 49 |
| - | 1 | 1803602-1 | SCR, BHSC, RoHS (M8 X 25) | 41 |
| - | 1 | 1-1752356-8 | SUPPORT, TERMINAL | 34 |
| - | 2 | 2079383-5 | SCR, BHSC, RoHS (M4 X 20) | 33 |
| - | 2 | 3-2844962-0 | SPACER, CYLINDRICAL, STRIP GUIDE | 30 |
| - | 1 | 2844992-2 | ASSEMBLY, STRIP GUIDE | 29 |
| - | 1 | 455888-3 | SPACER, CRIMPER | 28 |
| - | 1 | 1320928-2 | STRIP GUIDE | 24 |
| - | 1 | 2168083-2 | SCR, SKT HD CAP, RoHS, M4 X 8.0 | 21 |
| - | 2 | 1-18028-2 | WASHER, FLAT, REG M4 | 20 |
| - | 1 | 2119533-1 | STRIPPER, SIDE FEED | 19 |
| - | 1 | 2119806-1 | INSERT, SHEAR | 13 |
| - | 1 | 3-22280-3 | SPRING, COMPRESSION | 12 |
| - | 1 | 1-356885-4 | STOP, SHEAR | 11 |
| - | 1 | 2119805-1 | SHEAR HOLDER, FRONT | 10 |
| - | 1 | 454276-5 | FLOATING SHEAR, FRONT | 9 |
| - | 1 | 1-1633923-5 | ANVIL, COMBINATION | 8 |
| - | - | - | - | 7 |
| - | - | - | - | 6 |
| - | 1 | 2119757-8 | DEPRESSOR, SHEAR | 5 |
| - | 1 | 4-238011-7 | BLOCK, CRIMPER SPACER | 4 |
| - | 1 | 5-2119785-8 | CRIMPER, INSULATION OVERLAP PREMIUM | 3 |
| - | 1 | 455888-4 | SPACER, CRIMPER | 2 |
| - | 1 | 7-456408-2 | CRIMPER, WIRE PREMIUM | 1 |

| DIMENSIONS: | | TOLERANCES UNLESS OTHERWISE SPECIFIED: | | MATERIAL: | | FINISH: | | WEIGHT: | | SCALE: | | SHEET: | | REV: | |
|-------------|---------|--|---------|-----------|---------|---------|--------|---------|--|--|-----|--------|---|------|--|
| mm | 0 PLC ± | 1 PLC ± | 2 PLC ± | 3 PLC ± | 4 PLC ± | ANGLES | FINISH | | | Customer Accessible Production Drawing | 1:2 | 3 | 4 | D | |



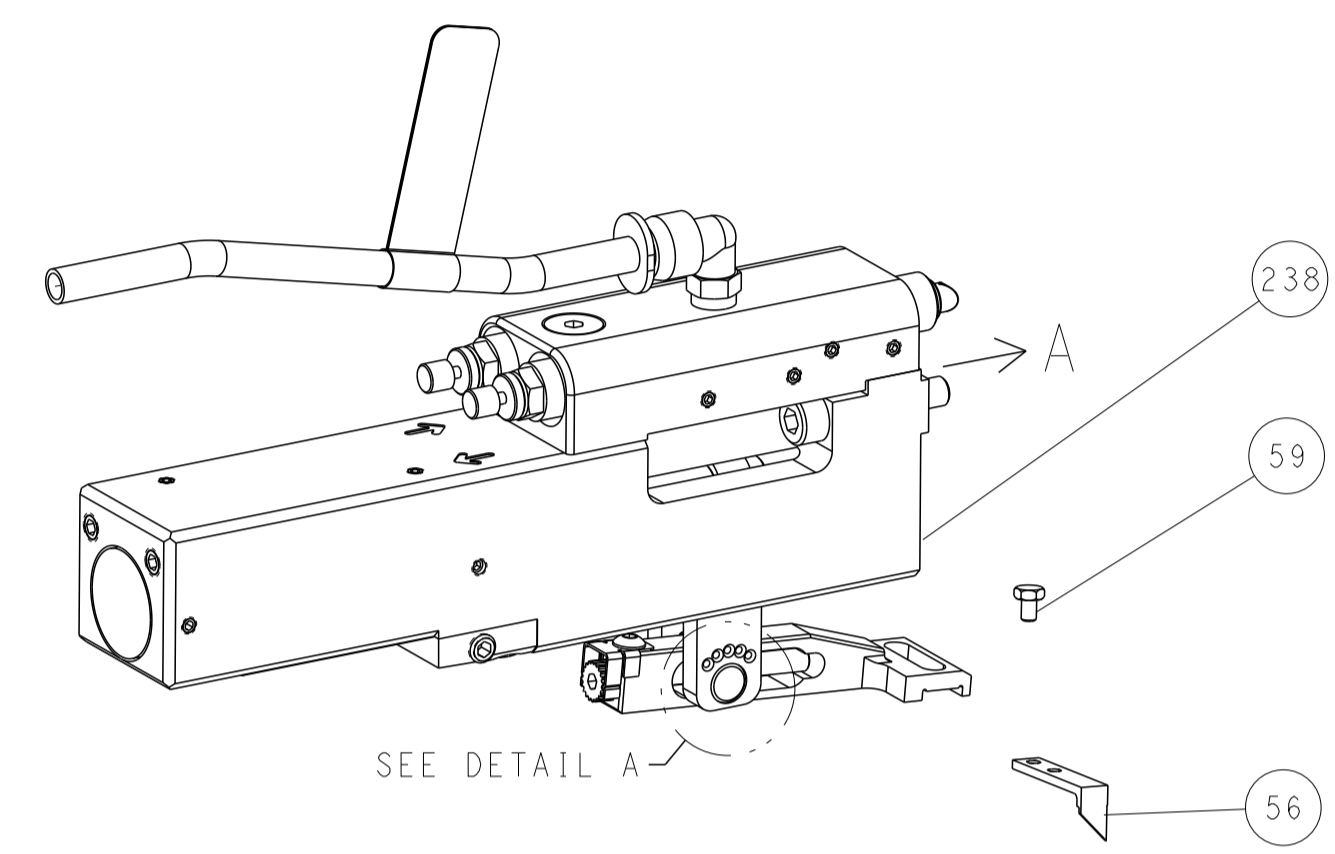
Ocean Side Feed Applicator

SIZE: A1 CAGE CODE: 00779 DRAWING NO: 2266445

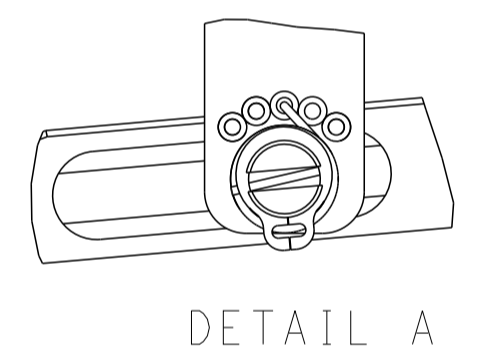
| LOC | DIST | REVISIONS | | | | | |
|-----|------|-----------|-----|-------------|------|-----|------|
| | | P | LTN | DESCRIPTION | DATE | OWN | APVD |
| A | 66 | - | - | SEE SHEET 1 | - | - | - |

FEED TYPE

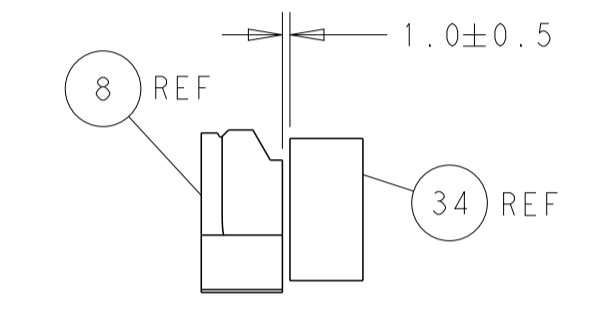
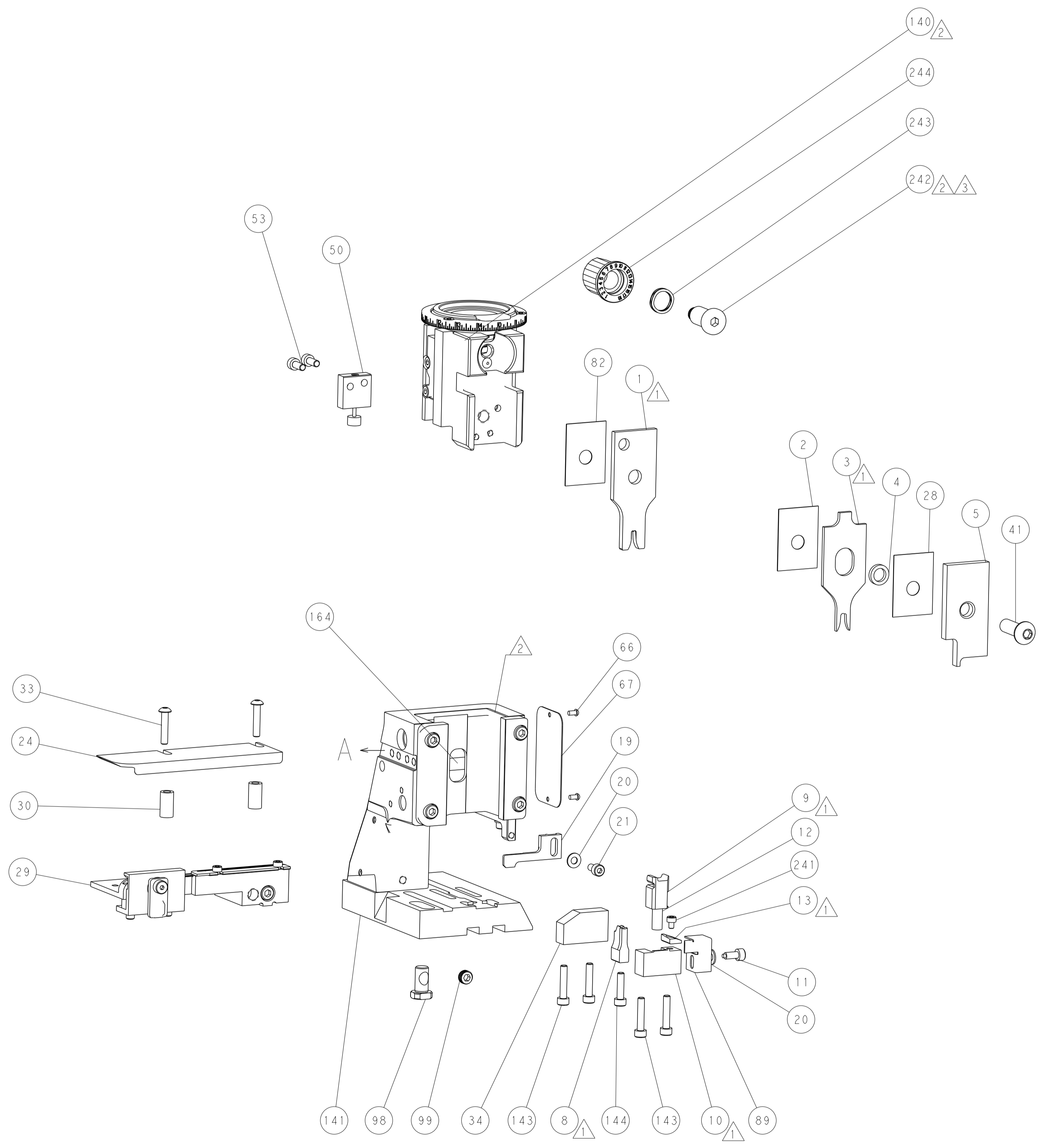
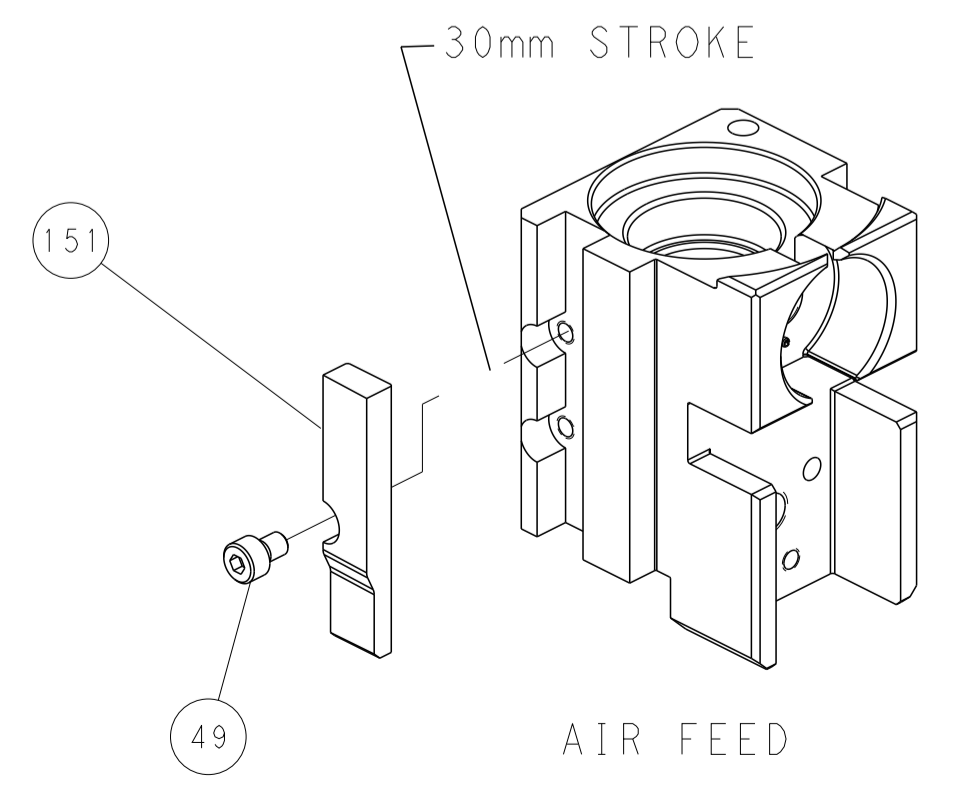
PNEUMATIC



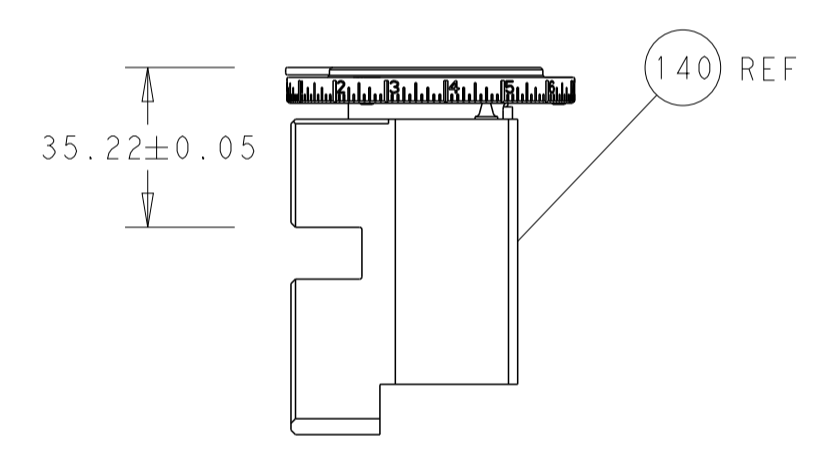
FEED SPRING SETTING POSITION (SHOWN FROM REAR SIDE)



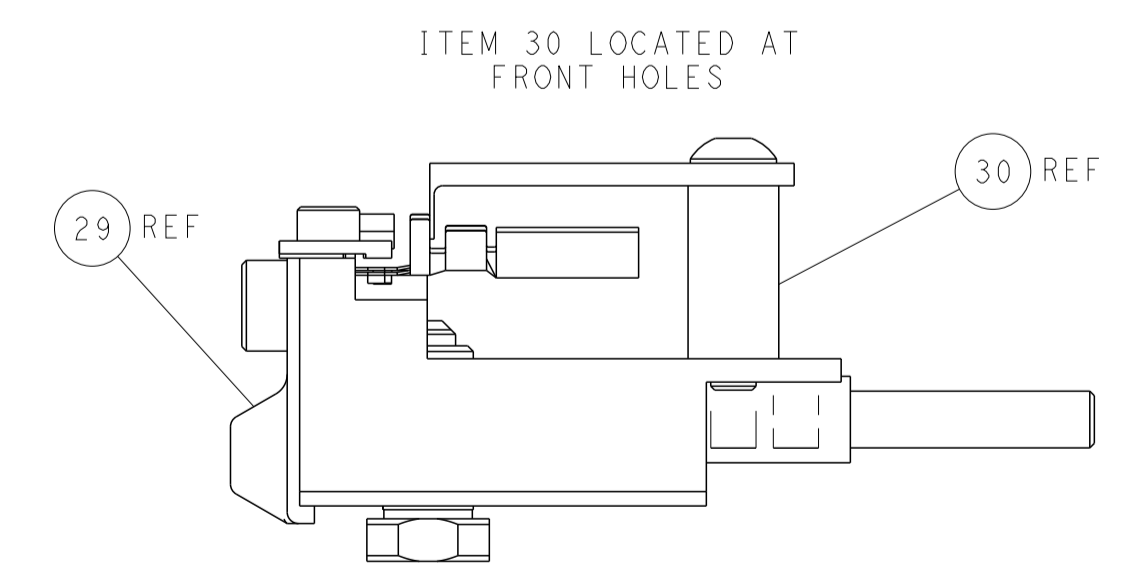
CAM POSITION



TERMINAL SUPPORT LOCATION



RAM SET-UP



FEED TRACK POSITION
GUIDE BY INSULATION BARREL

PACIFIC VERSION
 Shown on sheets 3 of 4 & 4 of 4
 (Atlantic version shown on sheets 1 of 4 & 2 of 4)

| | | | | |
|---|--|--|---|---|
| <small>THIS DRAWING IS UNPUBLISHED. RELEASED FOR PUBLICATION BY TYCO ELECTRONICS CORPORATION. ALL RIGHTS RESERVED.</small> | | DWN: J.HOU 15AUGUST2014 CHK: Y.YIN 15AUGUST2014 APVD: H.GUO 15AUGUST2014 | NAME: Ocean Side Feed Applicator SIZE: A1 CAGE CODE: 00779 DRAWING NO: C=2266445 | RESTRICTED TO: - SCALE: 1:2 SHEET: 4 OF 4 REV: D |
| DIMENSIONS: mm TOLERANCES UNLESS OTHERWISE SPECIFIED: 0 PLC ± 1 PLC ± 2 PLC ± 3 PLC ± 4 PLC ± ANGLES ± MATERIAL: - FINISH: - | | STE TE Connectivity Harrisburg, PA 17105-3608 | | |