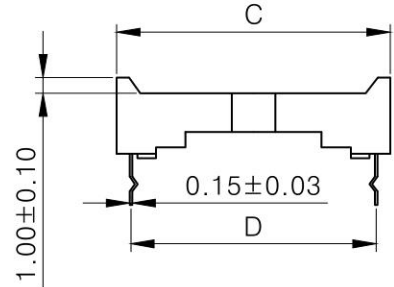
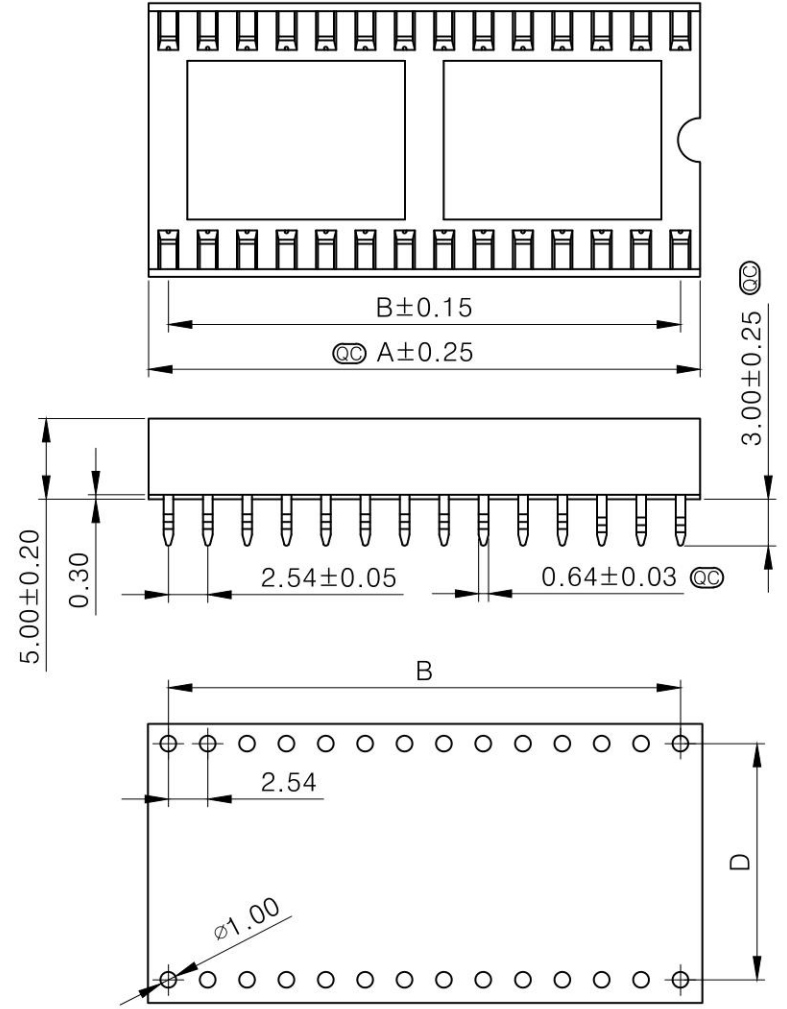


Dimensions

No.Of Contacts	A	B	C	D
6	7.62	5.08	10.02	7.62
8	10.16	7.62	10.02	7.62
14	17.78	15.24	10.02	7.62
16	20.32	17.78	10.02	7.62
18	22.86	20.32	10.02	7.62
20	25.40	22.86	10.02	7.62
24	30.48	27.94	10.02	7.62
28	35.56	33.02	10.02	7.62



Technical Specs:
 Insulator: Black glass filled polyester PBT-GF30-FR
 Flammability: UL 94V-0
 Contacts: Brass
 Mechanical life: min 50 cycles
 Rated current: 3 A
 Contact resistance: max 20 Milliohms
 Dielectric strength: min 1000 V RMS
 Ⓞ Important Dimensions

P.C. Board Layout

E			Units	mm	Scale	2:1	Drawing By	Date	CnC Tech, LLC Industrial Cable and Connector Technology				
D			Tolerance Unless Otherwise Specified			Lin-Wu	2019/06/06						
C			.X ~ ±0.30			Revised By	Date	Sheet	1 of 1	Title	IC Socket Pitch:2.54mm		
B			.XX ~ ±0.25			YP-Liang	2019/06/06	Third Angle Projection		Part No.	245-XX-I-03	REV	A
A	RELEASED	06/06/19	.XXX ~ ±0.20			Approval By	Date						
REV	DESCRIPTION.	Date	Angle ~ ± 3°			Kirby-Xiao	2019/06/06						