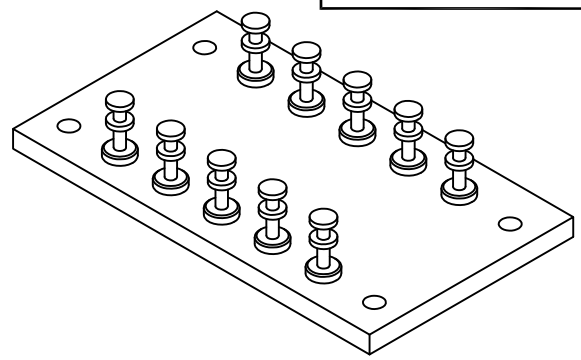
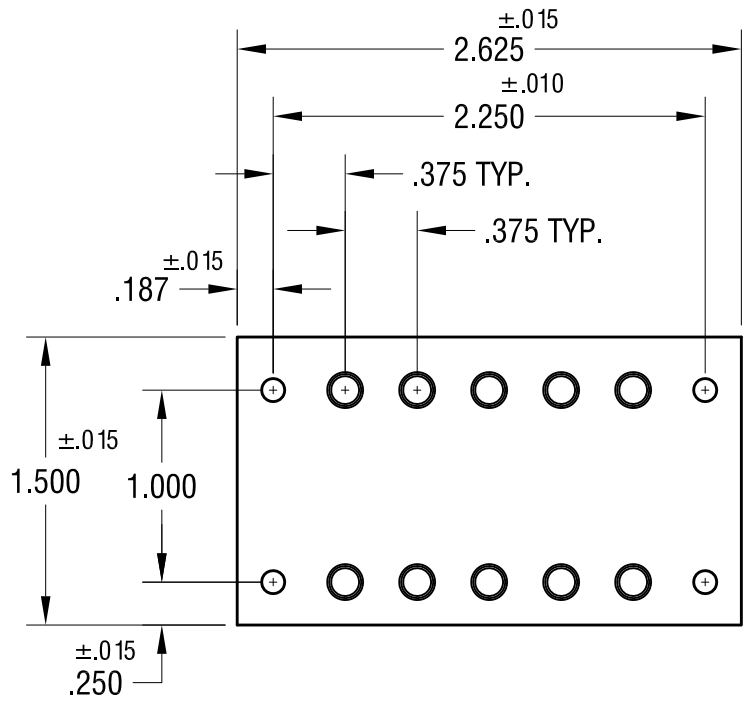
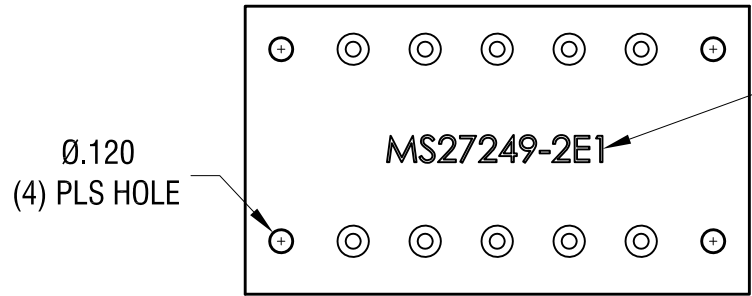
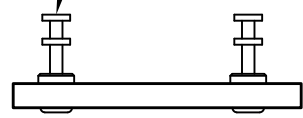
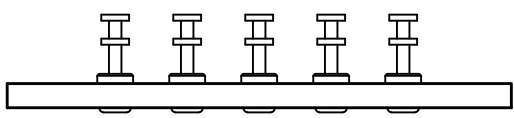


THIS DOCUMENT IS THE PROPERTY OF
KEYSTONE ELECTRONICS CORP. AND
SHALL NOT BE REPRODUCED, DISTRIBUTED
OR USED AS A BASIS FOR MANUFACTURE
WITHOUT PRIOR WRITTEN PERMISSION
FROM KEYSTONE ELECTRONICS CORP.



TERMINAL P/N 1503-4
(TYP. 10 PLS)
MOUNTED INTO .120 DIA. HOLE



STAMP
P/N MS27249-2E1
ON FAR SIDE

NOTE:
TERMINAL: MAT'L- BRASS
FINISH- ELECTRO-SOLDER
BOARD: MAT'L- .125 TH'K G-10 GLASS EPOXY

KEYSTONE ELECTRONICS CORP.			
www.keyelco.com • NEW HYDE PARK NY 11040 • Tel (516)328-7500			
PART NAME			
TERMINAL BOARD, (1) SECTION			
MATERIAL			
AS NOTED			
FINISH		DRN BY	DATE
AS NOTED		BOONE	8..25.93
		APP'D	SCALE
		RH	1X
TOLERANCES	INCH [MM]	CODE	DWG NO.
DECIMAL	± .005 [± 0.13]	C	MS27249-2E1
ANGULAR	± 1°		
UNLESS OTHERWISE SPECIFIED			

DATE	DESCRIPTION	REV.
------	-------------	------