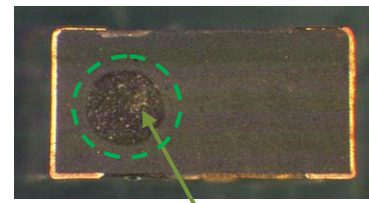
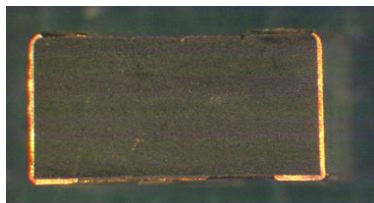
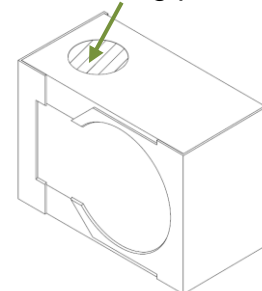


**Objective:** Introduction of laser marking for MIDLED SFH 4645  
**Application:** SFH 4645  
**Background:** Better visual distinction between anode and cathode side.

**Realization:** Status old: Without marking  
Status new: Without or with laser marking  
Illustration: SFH 4645 without marking SFH 4645 with laser marking

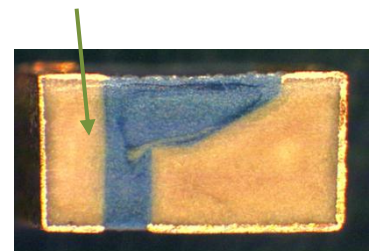


Cathode marking position:



Note: MIDLED is available in two package types. Laser marking will only be introduced for the package type with black body (see the photos above). For the two-colored package (see the photo on the right) no laser marking is planned, as the cathode side can be easily distinguished from the anode side by the package structure.

Cathode side:



**Time schedule:** Earliest phase in: November 2014

**Please direct your inquiry to your local Sales office.**

---

## *Products Affected by Information Notification*

**Number:** OS-IN-2014-028

**Name:** Introduction of laser marking for MIDLED SFH 4645

**Release Date:** 10/15/2014

**Implementation Date:** 11/15/2014

<i>Product</i>	<i>QNumber</i>	<i>QNumber Description</i>	<i>Part Number</i>
SFH 4645	Q65110A9367	SFH 4645	SFH 4645
	Q65110A9606	SFH 4645-UV-Z	SFH 4645-UV-Z