

Light is OSRAM

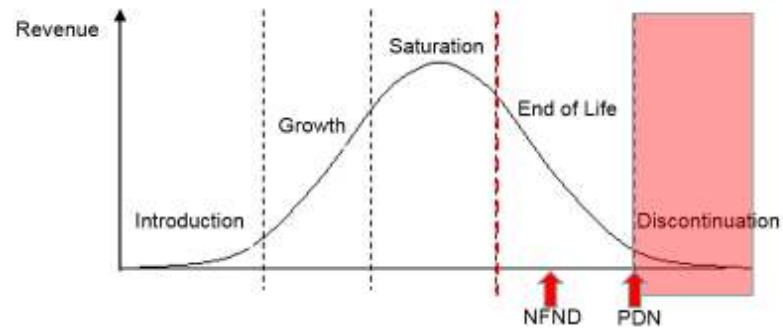
## Product Discontinuation (acc. JEDEC J-STD-048) OS-PD-2017-066

16-Oct-2017

---

<b>Last order:</b>	15-Apr-2018
<b>Last delivery:</b>	15-Oct-2018
<b>Reason:</b>	Brightness Improvement

---



Please direct your feedback to your local Sales office.

DISCONTINUED				NEW (REPLACEMENT)			
Device	Ordering Code	Function	Brand	Device	Datasheet Ordering Code	Function	Brand
<b>GW KAHQB2.EM</b>							
GW KAHLB2.CM-STSU-30B3-T02	Q65111A9202	LED	SOLERIQ S 19	GW KAHLB2.CM-SUTP-30B3-T02	Q65112A4910	LED	SOLERIQ S 19

---

## *Products Affected by Product Discontinuation Notification*

**Number:** OS-PD-2017-066

**Name:** Discontinuation due to brightness improvements

**Release Date:** 10/16/2017

**Last Order:** 4/15/2018

**Last Delivery:** 10/15/2018

***DISCONTINUED***

***NEW (REPLACEMENT)***

<i>Product</i>	<i>QNumber</i>	<i>QNumber Description</i>	<i>Part Number</i>	<i>Product</i>	<i>QNumber</i>	<i>QNumber Description</i>	<i>Part Number</i>
GW KAHLB2	Q65111A9202	GW KAHLB2.CM-STSU-30B3-T02	GW KAHLB2.CM-STSU-30B3	GW KAHLB2	Q65112A4910	GW KAHLB2.CM-SUTP-30B3-T02	