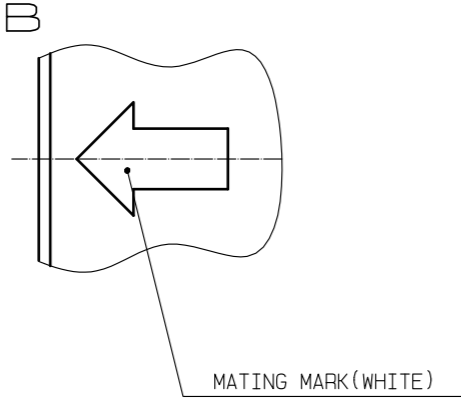
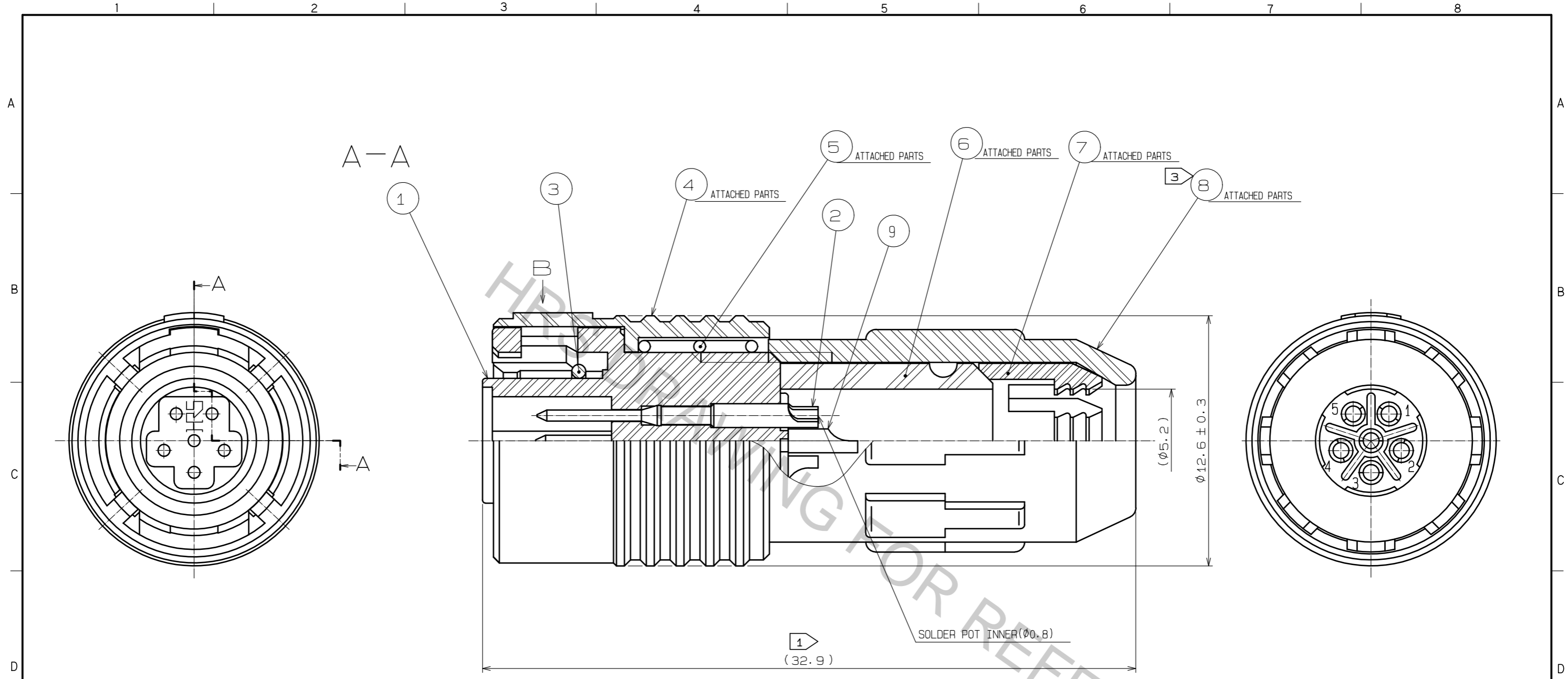


Aug.1.2018 Copyright 2018 HIROSE ELECTRIC CO., LTD. All Rights Reserved.
 In case that the application demands a high level of reliability, such as automotive,
 please contact a company representative for further information.



NOTES 5 THE CABLE PULL AND TWISTING STRENGTH AND OTHER CHARACTERISTICS MAY DIFFER, DEPENDING ON THE CABLE STRUCTURE. PLEASE CONFIRM BEFORE THE USE.

- NOTES 1 TOTAL LENGTH BECOMES 30.3±1 WHEN 8 IS SCREWED INTO 1 COMPLETERY.
 2 TABLE FOR ASSEMBLY AND SOLDERING IS AVAILABLE HR30-6P-6P-T01.
 3 THE RECOMMENDED CLAMP TORQUE OF REF. NO.8 TO BE 0.5N·m.
 SPACER FOR ASSEMBLY IS AVAILABLE HR30-6P-T02.
 4 SURFACE PLATING:GOLD PLATING 0.2µm min.
 UNDER PLATING:NICKEL PLATING 2µm min.

5	STAINLESS STEEL								
4	PBT	(BLACK)	UL94V-0	9	BRASS				
3	SIR	(RED)		8	PBT (BLACK) UL94V-0				
2	BRASS	4		7	POLYACETAL (NATURAL)				
1	PPS	(BLACK)	UL94V-0	6	CR (BLACK)				
NO.	MATERIAL	FINISH	REMARKS	NO.	MATERIAL	FINISH	REMARKS		
UNITS	mm	SCALE	5 : 1	COUNT	DESCRIPTION OF REVISIONS		DESIGNED	CHECKED	DATE
APPROVED		: HY. KOBAYASHI		18.02.26		DRAWING NO.		EDC-112010-31-00	
CHECKED		: HY. KOBAYASHI		18.02.26		PART NO.		HR30-6P-6P(31)	
DESIGNED		: DS. MATSUNE		18.02.26		CODE NO.		CL130-0009-5-31	
DRAWN		: DS. MATSUNE		18.02.26				1/1	