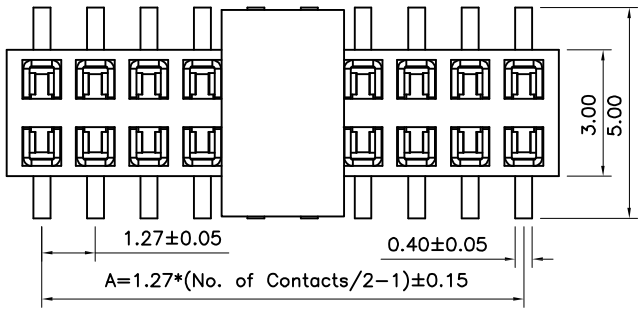
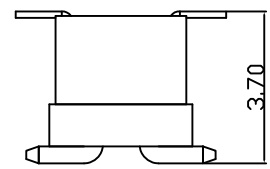
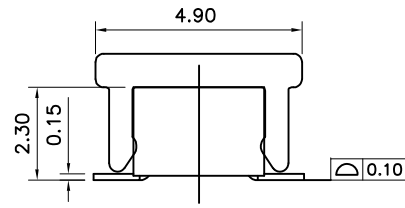
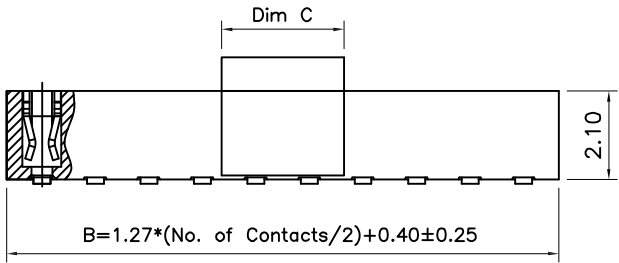


REV.	DESCRIPTION	DATE
A	New Drawing	2018/04/25

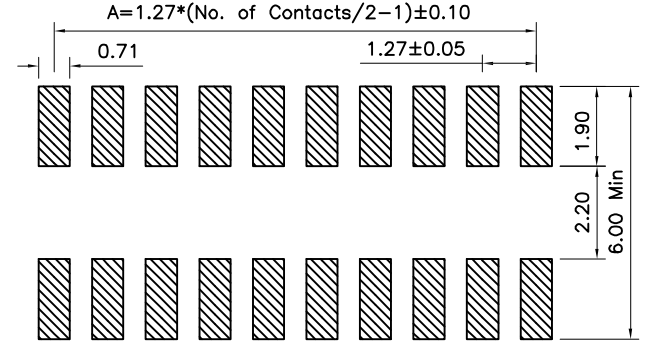


Compliance with:  
 USB3.2 Gen2 Type C(10Gbps),  
 USB3.2 Gen1(5Gbps)  
 Mating with:  
 "PHCD-SSXXXG1CBOLE-B346"  
 Mating Height: 3.70mm

Note:  
 04&06 Pin  
 Dim C=2.92  
 08~40 Pin  
 Dim C=5.00



Mating Drawing



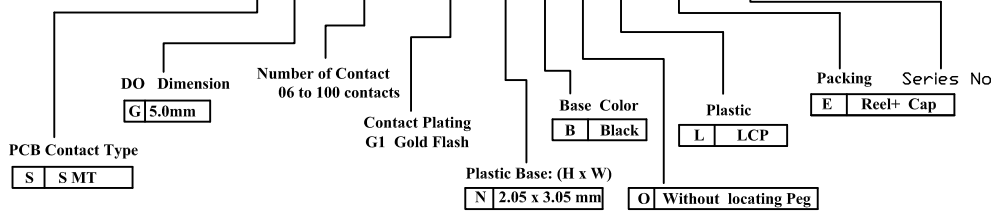
PCB Layout

RoHS compliant

LTR	Part Name	Material	Description	QTY
1	Housing	LCP UL94V-0	260°C for 10 Seconds . Initial : 1000M Ohms Min. After Test : 500M Ohms Min.	1
2	Contact	Bronze C5191	Current Rating : 1.0A Initial : 20m Ohms Max. After Test : 40m Ohms Max.	XX
3	Cap	LCP	260°C for 10 Seconds .	1

Temperature Rating : -40°C ~ +125°C .  
 Dielectric Withstanding Voltage : 500V AC/Min .

**FHCD-SGXXXG1NBOL-E-F01**



General Tolerance		TITLE	Pitch 1.27x1.27mm Female Header SMT,Dual Row	
X.	± 0.5	DRAWN Andy	DATE	NO.
.X	± 0.3		04-25-18'	T230
.XX	± 0.2	CHECK	DATE	PART NO.
.XXX	± 0.1			FHCD-SGXXXG1NBOL-E-F01
Angle	± 5°	APPROVED	DATE	CUSTOMER NO.
				DK

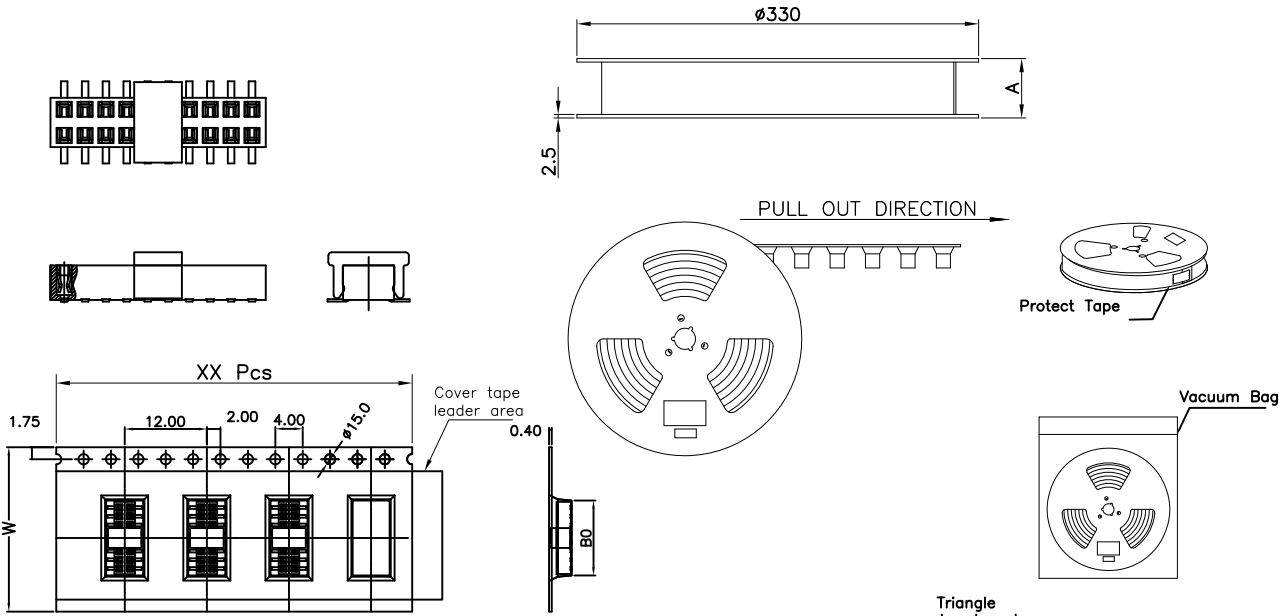
**Superior Tech Co., Ltd.**

REV.	UNIT	SCALE	
A	mm	4:1	

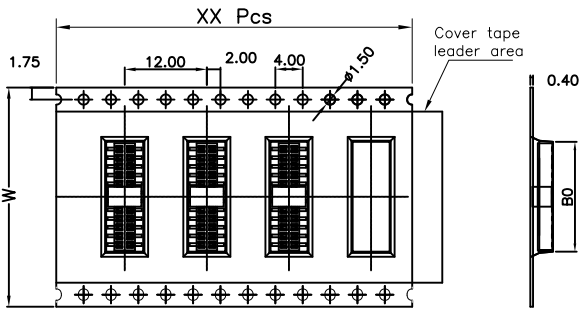
REV.	DESCRIPTION	DATE
A	New Drawing	2022/05/31

Note:

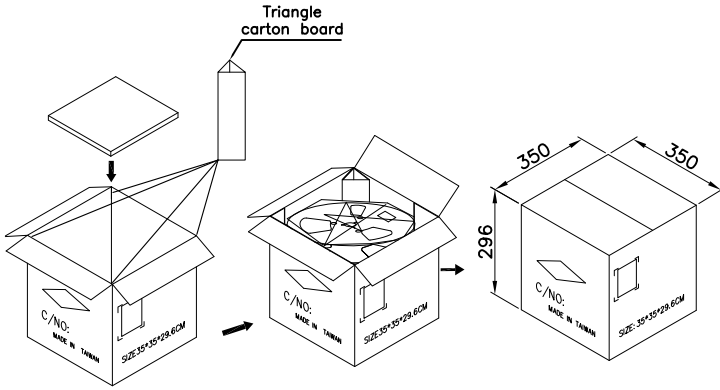
- All dimensions meet EIA-481-3 requirements.
- Material : Black Conductive Polystyrene Alloy  
100% recyclable.
- Thickness :  $0.40 \pm 0.05$ mm
- Component load per 13" reel :1500 pcs.
- Carton Size:350\*350\*296(MM)



For Reel width (dimension W)16/24mm  
Single row hole



For Reel width (dimension W)32/44/56/72mm  
Double rows hole



RoHS compliant

Pin No.	W	A	PCS/R	R/CTN	PCS/CTN	Pin No.	W	A	PCS/R	R/CTN	PCS/CTN
04	16	21	1500	12	18000	44	44	49	1500	5	7500
06	16	21	1500	12	18000	46	44	49	1500	5	7500
08	16	21	1500	12	18000	48	44	49	1500	5	7500
10	16	21	1500	12	18000	50	44	49	1500	5	7500
12	16	21	1500	12	18000	52	56	61	1500	4	6000
14	24	29	1500	9	13500	54	56	61	1500	4	6000
16	24	29	1500	9	13500	56	56	61	1500	4	6000
18	24	29	1500	9	13500	58	56	61	1500	4	6000
20	24	29	1500	9	13500	60	56	61	1500	4	6000
22	32	37	1500	7	10500	62	56	61	1500	4	6000
24	32	37	1500	7	10500	64	56	61	1500	4	6000
26	32	37	1500	7	10500	66	56	61	1500	4	6000
28	32	37	1500	7	10500	68	56	61	1500	4	6000
30	44	49	1500	5	7500	70	56	61	1500	4	6000
32	44	49	1500	5	7500	72	72	77	1500	3	4500
34	44	49	1500	5	7500	74	72	77	1500	3	4500
36	44	49	1500	5	7500	76	72	77	1500	3	4500
38	44	49	1500	5	7500	78	72	77	1500	3	4500
40	44	49	1500	5	7500	80	72	77	1500	3	4500
42	44	49	1500	5	7500						

**Superior Tech Co., Ltd.**

General Tolerance		TITLE	FHCD-SGXXXG1NBOL-E-F01_Packing	
X. ± 0.5		DRAWN	DATE	DWG. NO.
.X ± 0.3		Tom	05-31-22'	T230
.XX ± 0.2		CHECK	DATE	PART NO.
.XXX ± 0.1		APPROVED	DATE	FHCD-SGXXXG1NBOL-E-F01
Angle	± 5°			CUSTOMER NO. DK

REV.	UNIT	SCALE	
A	mm	1:5	