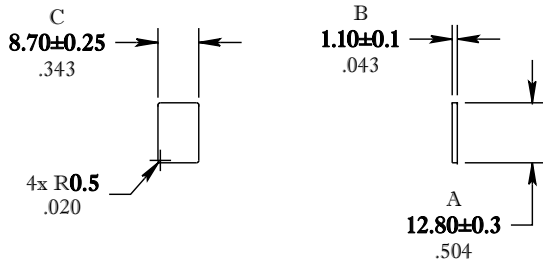


** Not all features are shown in this drawing. For more detailed information, please contact your Fair-Rite representative.

UNCONTROLLED ~CATALOG~ DRAWING

SIZE	PART NO.	REV.
B	9367053002	~



DIMENSIONS
BOLD NUMBERS ARE IN MILLIMETERS
 LIGHT NUMBERS ARE IN INCHES

ELECTRICAL SPECIFICATIONS						
$\Sigma l/A(\text{mm}^{-1})$	l_e (mm)	A_e (mm ²)	A_{Min} (mm ²)	V_e (mm ³)	A_L (nH) @10kHz <10gauss	Q @ 50MHz <1gauss
0.697	13.9	20.0	19.2	278	56 Min.	> 50
MATE WITH FR# 9567130302: CLAMPING FORCE = 3 lbs.						

POWER LOSS @ 25°C

f = 5 MHz, 100g P.L. < TBD Watts
 f = 10 MHz, 100g P.L. < TBD Watts

FR# 67

FAIR-RITE PRODUCTS CORP.						
TITLE "1" CORE						
DRAWN BY D. FOOTE	DATE 4/3/2019	SIZE	PART NO.	REV.		
CHKD BY			B 9367053002	~		
APPRVD BY		SCALE	NONE	SHEET	1 of 1	