



ANATECH ELECTRONICS INC
RF & Microwave Filters & Products

**5G/LTE Band 1/1920-1980 MHz / 2110-2170 MHz
Connectorized Ceramic Duplexer**



Part Number: AM1950-2140D1112-C

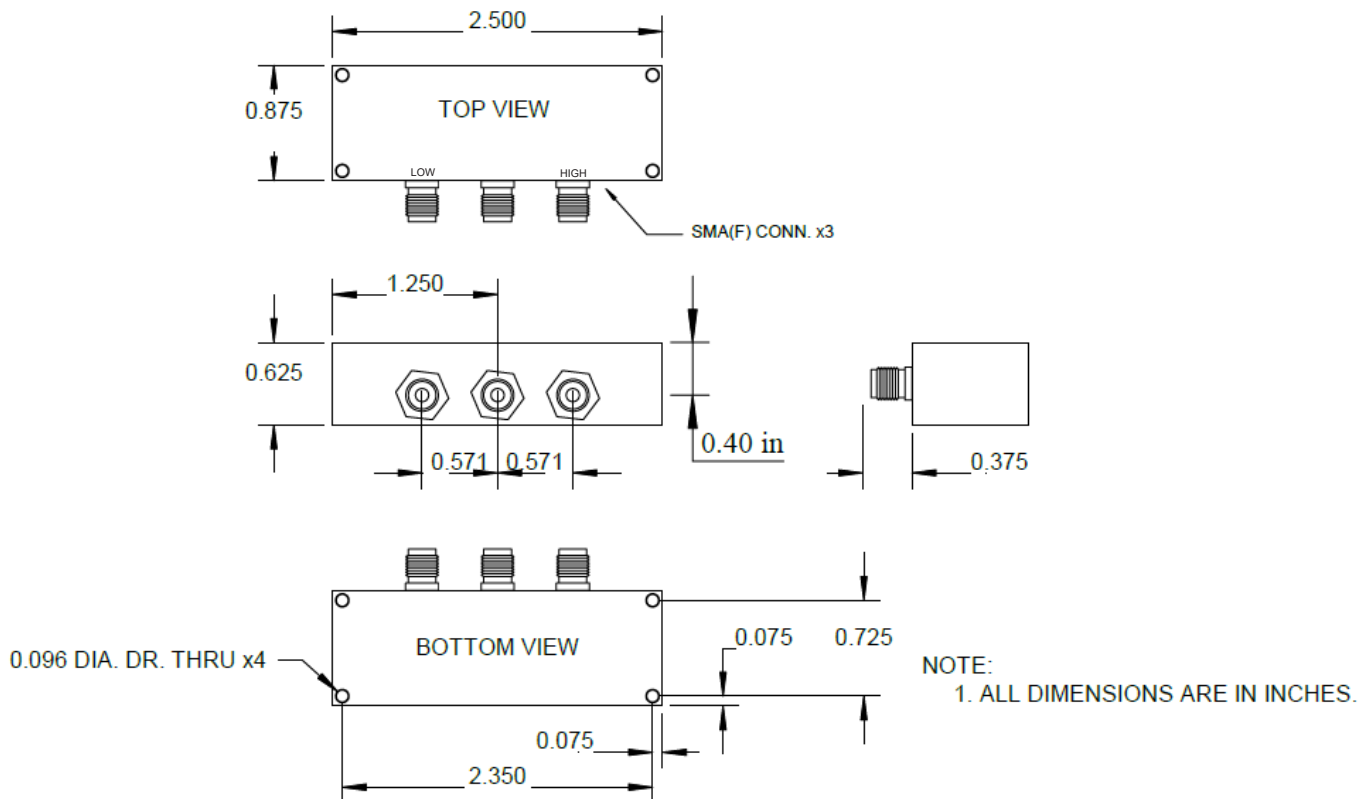
<u>Characteristics</u>	<u>Band 1</u>	<u>Band 2</u>
Passband:	1920-1980 MHz	2110-2170 MHz
Bandwidth:	Fo +/- 30 MHz	Fo +/- 30 MHz
VSWR:	1.5:1 Max	1.5:1 Max
Passband Insertion Loss:	1.5 dB max	1.5 dB max
Passband Ripple:	0.6 dB max	0.6 dB max
Input / Output Impedance:	50 Ohms	50 Ohms
Isolation:	50 dB min	50 dB min
Power Handling:	5 W	5 W

<u>Mechanical</u>	
Connector Type:	SMA (F)
Dimensions:	2.5 x 0.875 x 0.625 in.

<u>Environmental</u>	
Operating Temperature:	-40 to +85 deg.C
Storage Temperature:	-50 to +90 deg.C

This product is RoHs compliant.

Outline Drawing:



Tolerance: +/-0.01 inches [+/- 0.3mm]

Angles: +/- 1 Deg.

*Tolerance as shown unless otherwise specified in the datasheet electrical specification tables above.

*When max dimensions are called out the above tolerances do not apply as long as it is under the max call out.

DS-D1112-C-07212015-Rev0

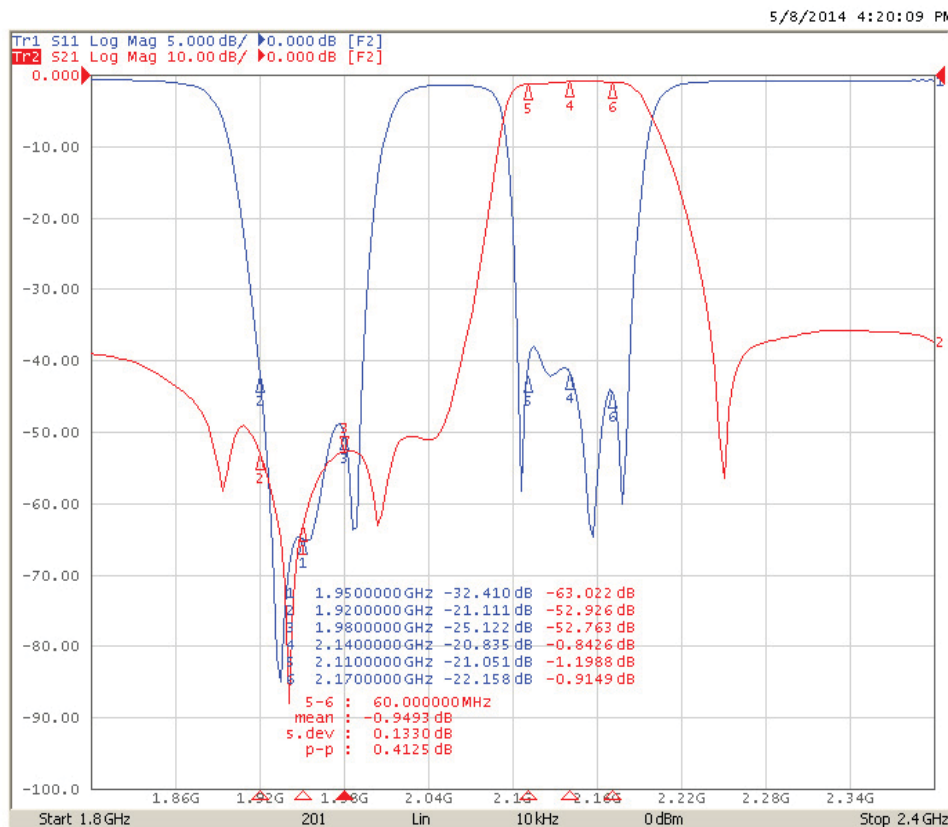
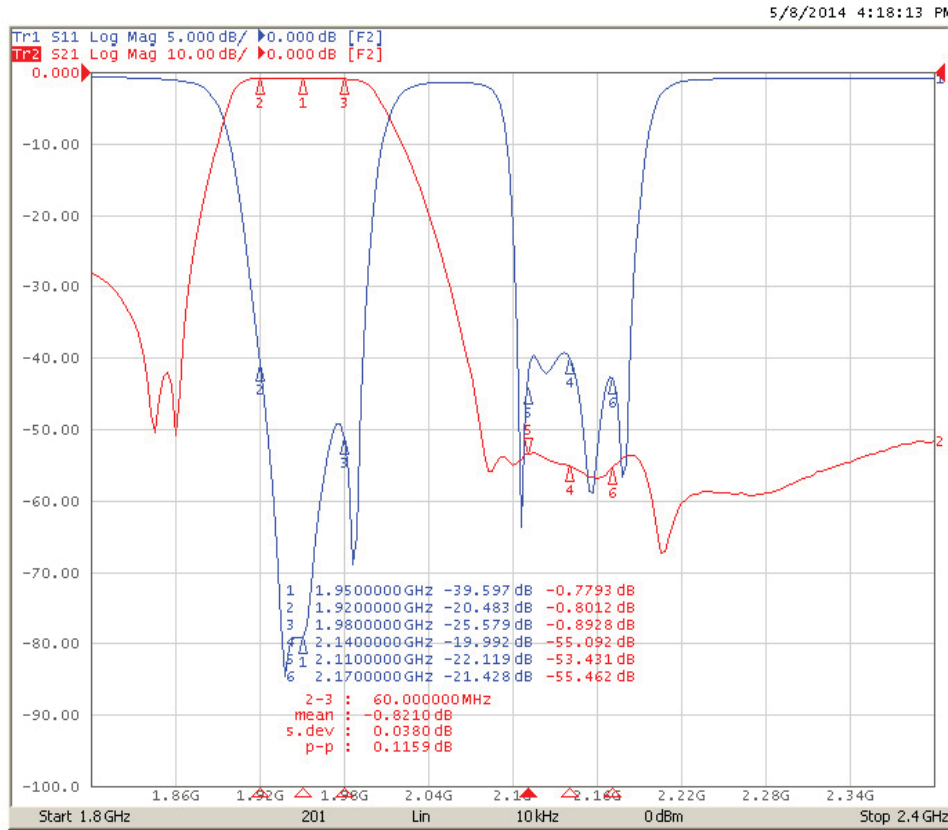


ANATECH ELECTRONICS INC
RF & Microwave Filters & Products

**5G/LTE Band 1/1920-1980 MHz / 2110-2170 MHz
Connectorized Ceramic Duplexer**



Part Number: AM1950-2140D1112-C



DS-D1112-C-07212015-Rev0