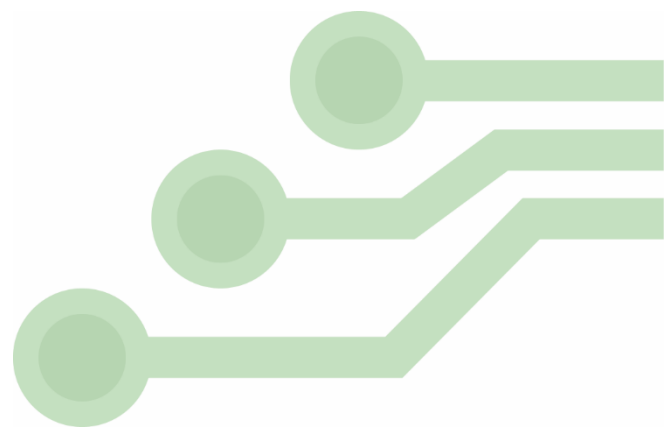


2661 Galvin Court
 Elgin, IL 60124, USA
 847.844.8795
nhtech@newhavendisplay.com



December 14th, 2018

Engineering Change Notification

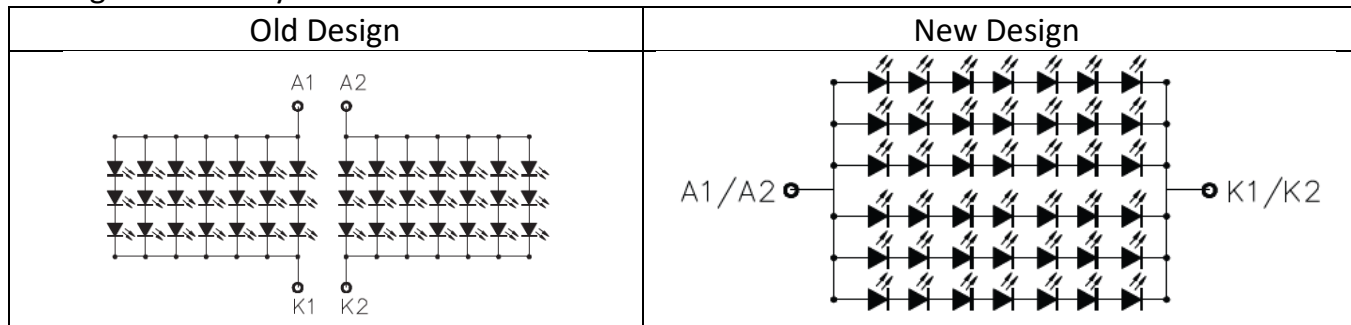
To: All Relevant Customers
From: Newhaven Display Quality

This notice is to inform you of a change to the following product(s):

- NHD-10.1-1024600AF-LSXV#**
- NHD-10.1-1024600AF-LSXV#-CTP**
- NHD-10.1-1024600MB-LSXV**
- NHD-10.1-1024600MB-LSXV-CTP**
- NHD-10.1-1024600AF-LSXV-CTPFA**

The backlight circuit has been redesigned to improve its efficiency and accept a wider input voltage range. This will help reduce the drive current and overall power consumption.

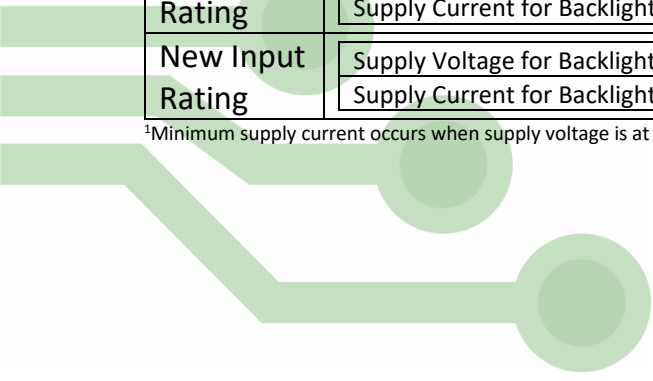
Backlight Circuit Layout:



Backlight Electrical Ratings

Old Input Rating	Supply Voltage for Backlight Driver	LED_V _{DD}	4	7	7.3	V
		Supply Current for Backlight Driver ¹	LED_I _{DD}	0.45	0.9	1.4
New Input Rating	Supply Voltage for Backlight Driver	LED_V _{DD}	4.5	12.0	22.4	V
	Supply Current for Backlight Driver	LED_I _{DD}	0.16	0.36	1.2	A

¹Minimum supply current occurs when supply voltage is at max; maximum supply current when supply voltage is at minimum.





We understand that each project is unique and therefore recommend you evaluate new samples to validate the change is viable for your project.

Please visit www.newhavendisplay.com or email nhtech@newhavendisplay.com for further information or assistance with this change.