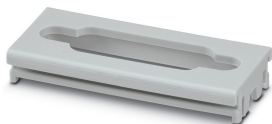


Connection plate - ICS20-F45D15-7035 - 2203893

Please be informed that the data shown in this PDF Document is generated from our Online Catalog. Please find the complete data in the user's documentation. Our General Terms of Use for Downloads are valid (<http://phoenixcontact.com/download>)

DIN rail housing, ICS filler, with D-SUB 15 function cutout, width: 20 mm, height: 7 mm, depth: 45 mm, color: light gray (7035)




Your advantages

- ✓ Flexible use, thanks to the modular system and unique modularity in the connection technology
- ✓ Standardized connections such as RJ45, USB, D-SUB and antenna sockets as components that can be integrated
- ✓ Optimal space utilization, as well as adaptability of design, colors, and printing
- ✓ Eight-position DIN rail connectors with parallel and up to two serial contacts for easy module-to-module communication



Key Commercial Data

| | |
|------------------------|---|
| Packing unit | 10 pc |
| Minimum order quantity | 10 pc |
| GTIN |  4 055626 465982 |
| GTIN | 4055626465982 |

Technical data

Item properties

| | |
|------------------------------|---|
| Brief article description | Connection plate |
| Type | ICS20-F45D15-7035 |
| Order No. | 2203893 |
| Housing type | DIN rail housing |
| Housing series | ICS |
| Range of articles | ICS20 |
| Type | ICS filler, with D-SUB 15 function cutout |
| Max. IP code to attain | IP20 |
| Mounting type | Slot |
| Ventilation openings present | no |

Dimensions

Connection plate - ICS20-F45D15-7035 - 2203893

Technical data

Dimensions

| | |
|--------------|---|
| Caption | Schematic figure for illustrating the item dimensions. The figure is not of the desired product. For further details, refer to the product drawings in the "Downloads" tab. |
| Width [w] | 20 mm |
| Height [h] | 7 mm |
| Depth [d] | 45 mm |

Material data

| | |
|--|-------------------|
| Housing material | Polyamide |
| Surface characteristics | untreated |
| Color (RAL) | light gray (7035) |
| Flammability rating according to UL 94 | V0 |

Ambient conditions

| | |
|---|--|
| Ambient temperature (storage/transport) | -40 °C ... 55 °C |
| Ambient temperature (assembly) | -5 °C ... 100 °C |
| Ambient temperature (operation) | -40 °C ... 105 °C (depending on power dissipation) |
| Relative humidity (storage/transport) | 80 % |

General information

| | |
|--------------|---|
| Type of note | Assembly instruction: |
| Note | Refer to the data sheet for the range in the download area. |

Packaging information

| | |
|----------------------------|----------------|
| Pieces per package | 10 |
| Denomination packing units | Pcs. |
| Outer packaging type | Resealable bag |

Standards and regulations

| | |
|--|----|
| Flammability rating according to UL 94 | V0 |
|--|----|

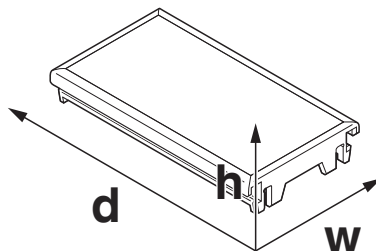
Environmental Product Compliance

| | |
|------------|---|
| China RoHS | Environmentally friendly use period: unlimited = EFUP-e |
| | No hazardous substances above threshold values |

Drawings

Connection plate - ICS20-F45D15-7035 - 2203893

Dimensional drawing



Schematic figure for illustrating the item dimensions. The figure is not of the desired product. For further details, refer to the product drawings in the "Downloads" tab.

Classifications

eCl@ss

| | |
|---------------|----------|
| eCl@ss 10.0.1 | 27182702 |
| eCl@ss 11.0 | 27182702 |
| eCl@ss 5.1 | 27180506 |
| eCl@ss 6.0 | 27180800 |
| eCl@ss 7.0 | 27182702 |
| eCl@ss 9.0 | 27182702 |

ETIM

| | |
|----------|----------|
| ETIM 6.0 | EC001031 |
| ETIM 7.0 | EC001031 |

UNSPSC

| | |
|-------------|----------|
| UNSPSC 18.0 | 31261501 |
| UNSPSC 19.0 | 31261501 |
| UNSPSC 20.0 | 31261501 |
| UNSPSC 21.0 | 31261501 |

Approvals

Approvals

Approvals

UL Recognized

Ex Approvals

Approval details

Connection plate - ICS20-F45D15-7035 - 2203893

Approvals

UL Recognized



<http://database.ul.com/cgi-bin/XYV/template/LISEXT/1FRAME/index.htm>

FILE E 240868

Phoenix Contact 2021 © - all rights reserved
<http://www.phoenixcontact.com>

PHOENIX CONTACT GmbH & Co. KG
Flachsmarktstr. 8
32825 Blomberg
Germany
Tel. +49 5235 300
Fax +49 5235 3 41200
<http://www.phoenixcontact.com>