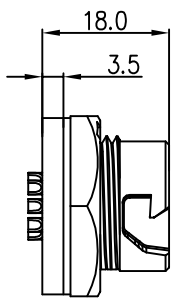


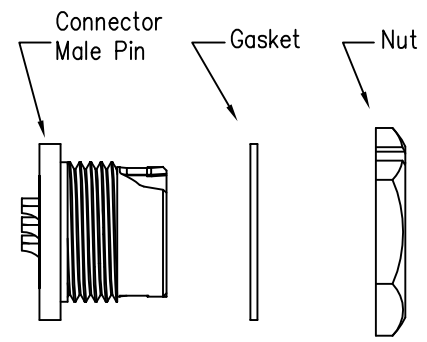
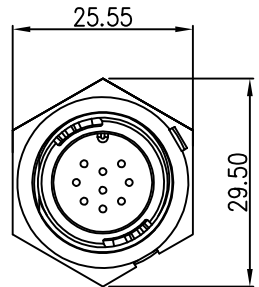
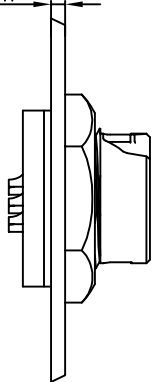
REV.	ECN NO.	DESCRIPTION	SIGN	DATE
C1	N/A	INITIAL DRAWING	Liu	2020/05/17



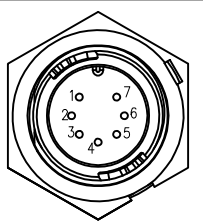
Recommended Panel Cut-Out



Panel T: Max 2.5mm

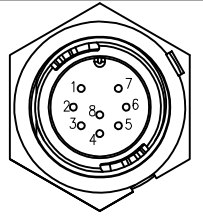


23XXX535-01  
Pin Number



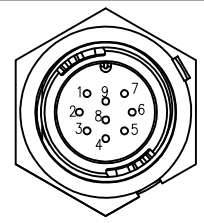
7 Pin

P/N: 23007535-01



8 Pin

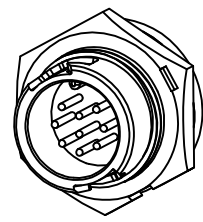
P/N: 23008535-01



9 Pin

P/N: 23009535-01

Pin Assignments Front View



Specification:

- 1.Operation Temperature: -45°C~105°C.
- 2.Insulation Resistance:100MΩ at DC500V.
- 3.Contact Resistance:<10mΩ.
- 4.Withstand Voltage: 1300V AC
- 5.Operating Current:5A
- 6.Operating Voltage:DC 60V
- 7.Waterproof Rate:IP67 (Mated)
- 8.Housing:Nylon, Black
- 9.Male Pin:Copper Alloy, Gold Plated
- 10.Gasket:Silicon Gray
- 11.Panel Nut:Nylon, Orange
- 12.Torque Rate:0.8~1.0N·m
- 13.RoHS Compliant.
- 14.UL Compliant.(Only 7Pin & 8Pin)
- 15.Mating Cap P/N:806-00047-00

UNIT:mm	
TOLERANCE	
.X	±0.25
.XX	±0.15
.XXX	±0.05
ANGLES	±1°

DESCRIPTION		Middle Series Push Lock Front Mount With Male Pin	
SCALE:	1:1	SHEET	1 OF 1
REV.	C1	SIZE	A4
* :Inspection Item			

**CHOGORI**

PART NO	23XXX535-01	DRAWN BY	Liu	DATE	2020/05/17
DWG NO		CHECKED BY	Mo	DATE	2020/05/17
CUSTOMER		APPROVED BY	Adley	DATE	2020/05/17

THIS INFORMATION IS CONFIDENTIAL AND IS DISCLOSED TO YOU ON CONDITION THAT NO FURTHER DISCLOSURE IS MADE BY YOU TO OTHER THAN CHOGORI PERSONNEL WITHOUT AUTHORIZATION FROM CHOGORI CORP.