

THIS DRAWING IS UNPUBLISHED.

RELEASED FOR PUBLICATION

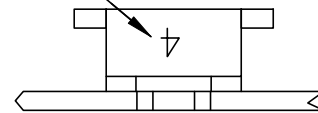
ALL RIGHTS RESERVED.

© COPYRIGHT - By -

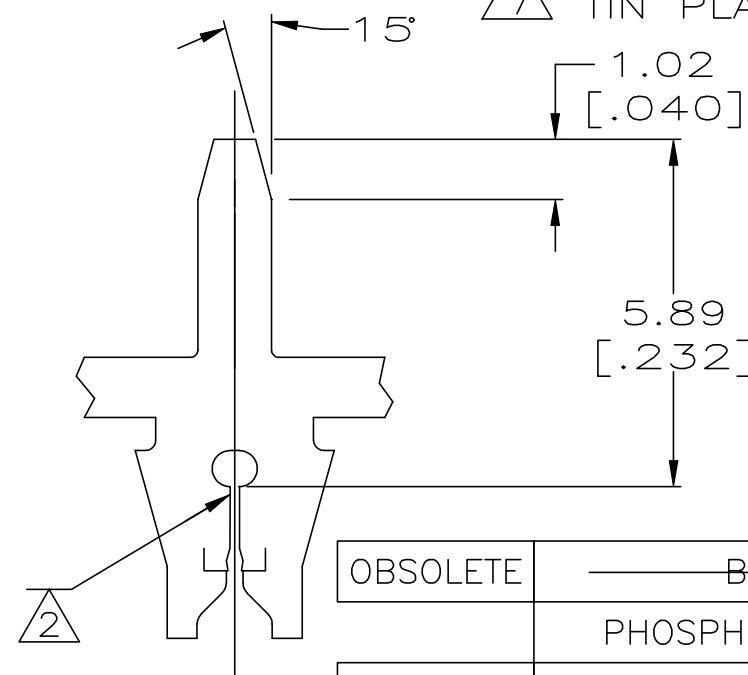
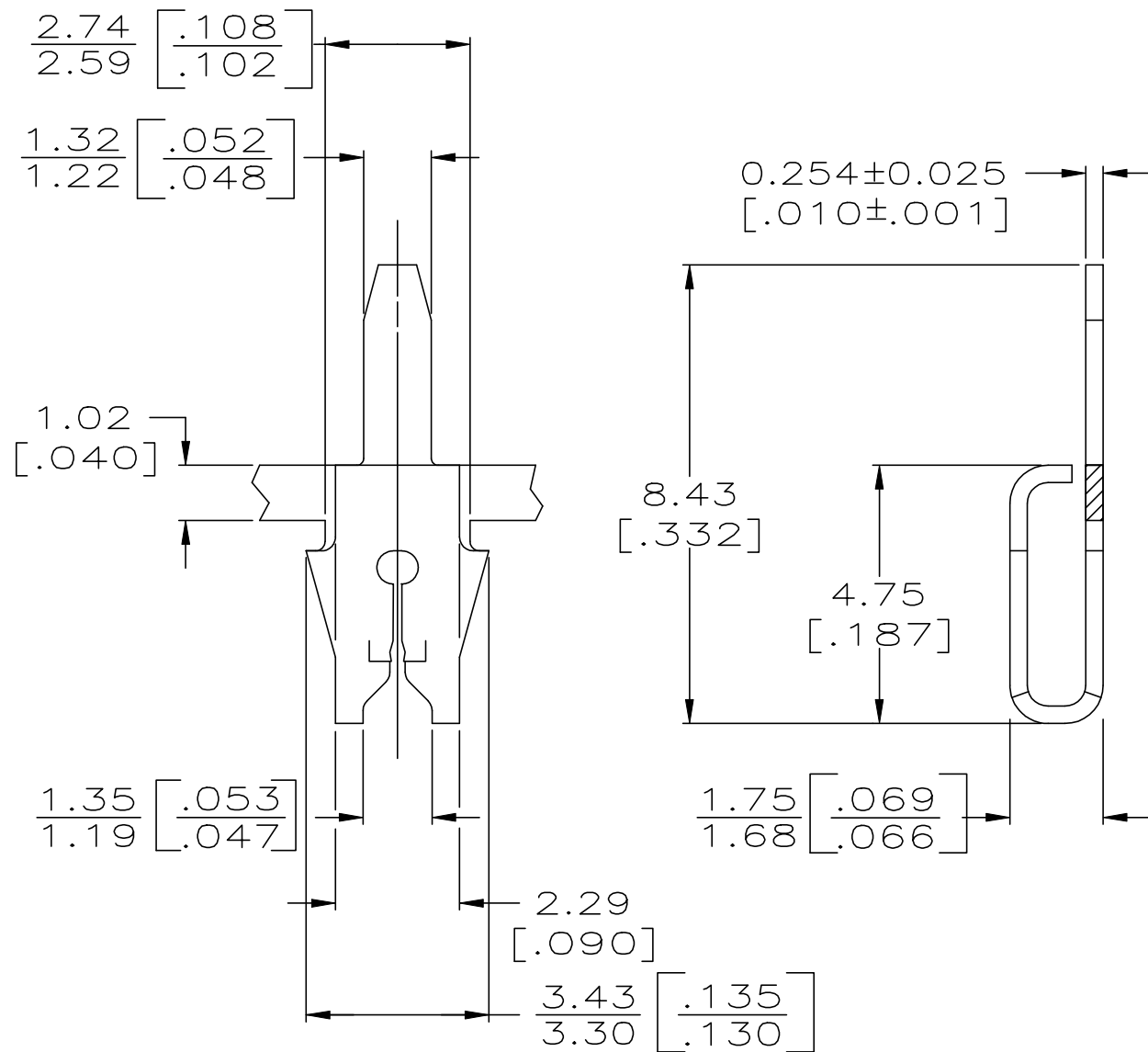
REVISIONS

P	LTR	DESCRIPTION	DATE	DWN	APVD
	H3	OBSOLETE 62938-4	22FEB2019	SV	PKS

IDENTIFICATION NUMBER 4 FOR MAGNET WIRE RANGE



- 1 CONTINUOUS STRIP ON REELS WITH TERMINALS LOCATED ON 5.08±0.08 [.200±.003] CENTERS.
- 2 SLOT ACCEPTS 0.18-0.23mm DIA [#33-#31]AWG COPPER MAGNET WIRE
- 3 TIN OVER NICKEL PLATE
- 4 REELED FOR APPLICATION THROUGH MAG-MATE INSERTION MACHINE.
- 5 REELED FOR INSERTION INTO PRINTED CIRCUIT BOARD.
- 6 PRELIMINARY - NOT FOR PRODUCTION.
- 7 TIN PLATE



OBSOLETE	BRASS	7	4	62938-4
	PHOSPHOR BRONZE	3	4	62938-3
OBSOLETE	BRASS	3	5	62938-2
	BRASS	3	4	62938-1
	MATERIAL		REELING	PART NUMBER

THIS DRAWING IS A CONTROLLED DOCUMENT.		DWN 24JAN2003 MICHAEL S. FEHER	<b>STE</b> TE Connectivity	
DIMENSIONS: INCHES		CHK 24JAN2003 KURT A. RANDOLPH		
TOLERANCES UNLESS OTHERWISE SPECIFIED:		APVD 24JAN2003 KURT A. RANDOLPH	NAME	
0 PLC ± -		PRODUCT SPEC	TERMINAL, POSTED, 187 SERIES MAG-MATE™	
1 PLC ± -		108-2012	-	
2 PLC ± 0.25 [.010]		APPLICATION SPEC	-	
3 PLC ± -		114-2069	SIZE	RESTRICTED TO
4 PLC ± -		WEIGHT	A3	-
ANGLES ± -		CUSTOMER DRAWING	CAGE CODE	DRAWING NO
FINISH -		SCALE	00779	62938
MATERIAL SEE TABLE		SHEET	1 of 1	REV H3