



Electrical Specifications

Center Frequency: 70 MHz
Bandwidth: 20 MHz
Passband: 60-80 MHz
Group Delay: 5 nsec
Rejection: >50 dB @ 0-45 MHz
>50 dB @ 95-500 MHz

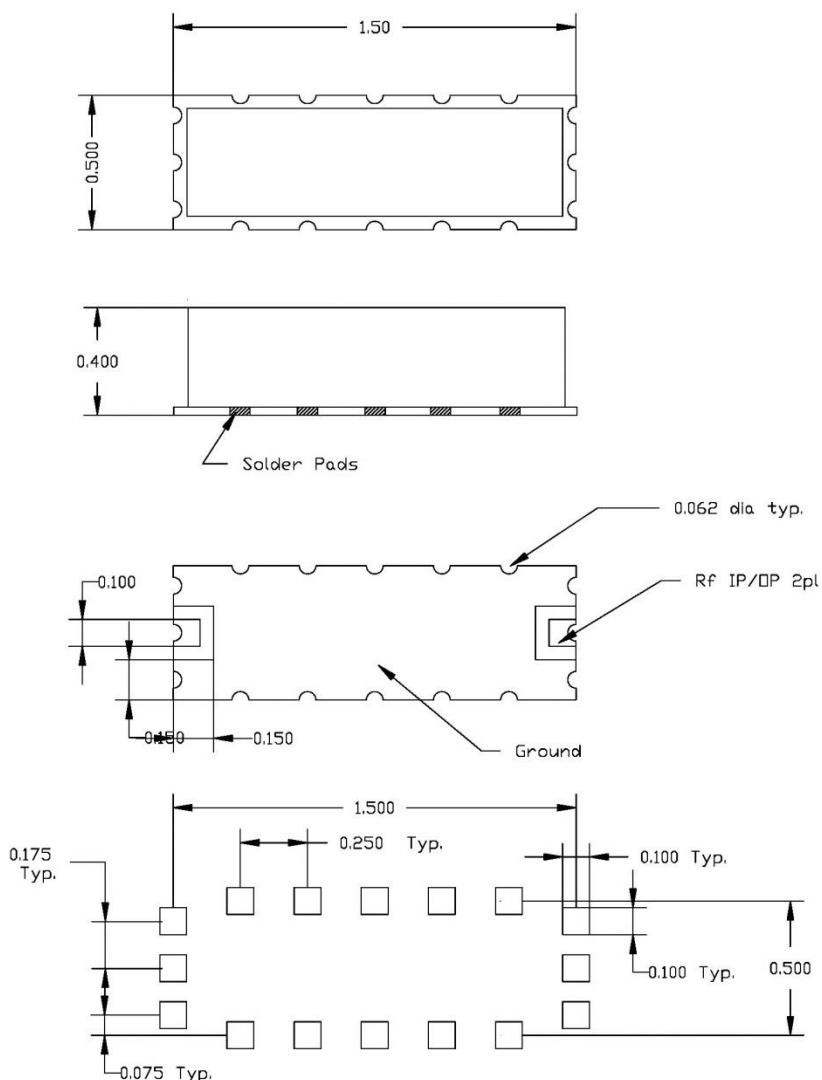
Mechanical

Mounting Method: SMT
Dimensions: 1.50 x 0.50 x 0.40 Inches

Environmental

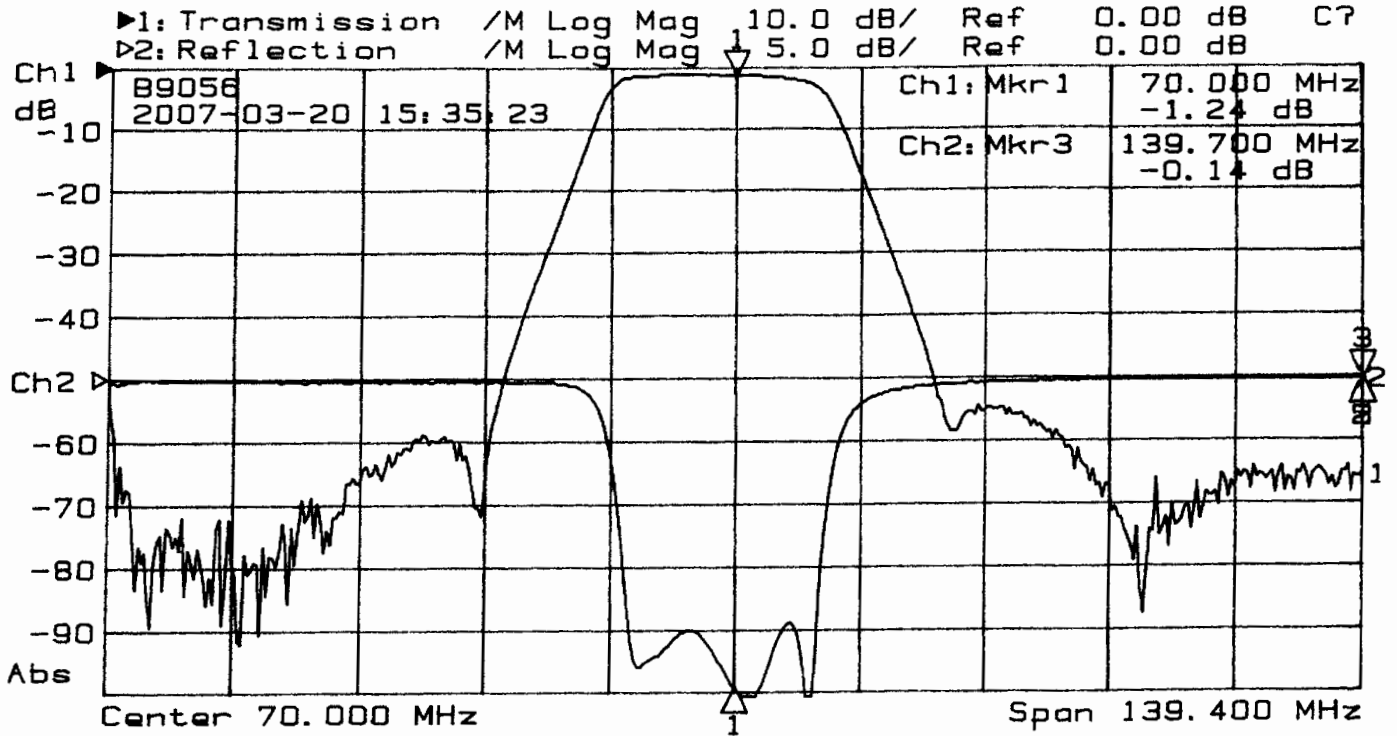
Operating Temperature: -30 to +70° C
Storage Temperature: -40 to +85° C

Outline Drawing:





Response Plot:



1: Mkr (MHz)	dB	2: Mkr (MHz)	dB
1> 70.00	-1.24	1: 70.00	-24.56
		2: 139.70	-0.14
		3> 139.70	-0.14
		5: 139.70	-0.14