

**NOTES:**

1. SEE CABLE SPECIFICATION ES-99027-0006.
2. SEE PRODUCT SPECIFICATION PS-99020-0015
3. HARNESS TO BE 100% ELECTRICALLY TESTED
4. CABLE I.D. TO BE SURFACE MARKED AS SHOWN

ITEM	COMPONENT	DESCRIPTION	QUANTITY	NOTE
▽1	99026-0034	40 CCT RIBBON CABLE 28 AWG	1	1,3,4
▽2	90781-6540	QF50 40 CCT CONNECTOR (REEL)	3	2,3

5	E
4	E
3	E
2	F
1	F

CABLE I.D.	MOLEX PART No.	DIM A	DIM B
HDDCBLO14AAWW	92305-0001	216±5	63.5±3
HDDCBLO15AAWW	92305-0002	381±5	63.5±3
CDRCBL004AAWW	92305-0004	476±5	159±5

FOR PREVIOUS DRAWING ISSUES SEE MRI.

SHEET 2 UPDATED  
ECN E71073  
14 MAY 1997 MCUR

**LTR REVISIONS**

DIMENSIONS SHOWN ( METRIC ) INCH	
UNLESS OTHERWISE SPECIFIED TOLERANCES: ANGULAR ± 1/2°	
INCH	( METRIC )
3 PLACE ± .	
2 PLACE ± .	±
1 PLACE ± .	±

DRAFT WHERE APPLICABLE MUST REMAIN WITHIN DIMENSIONS

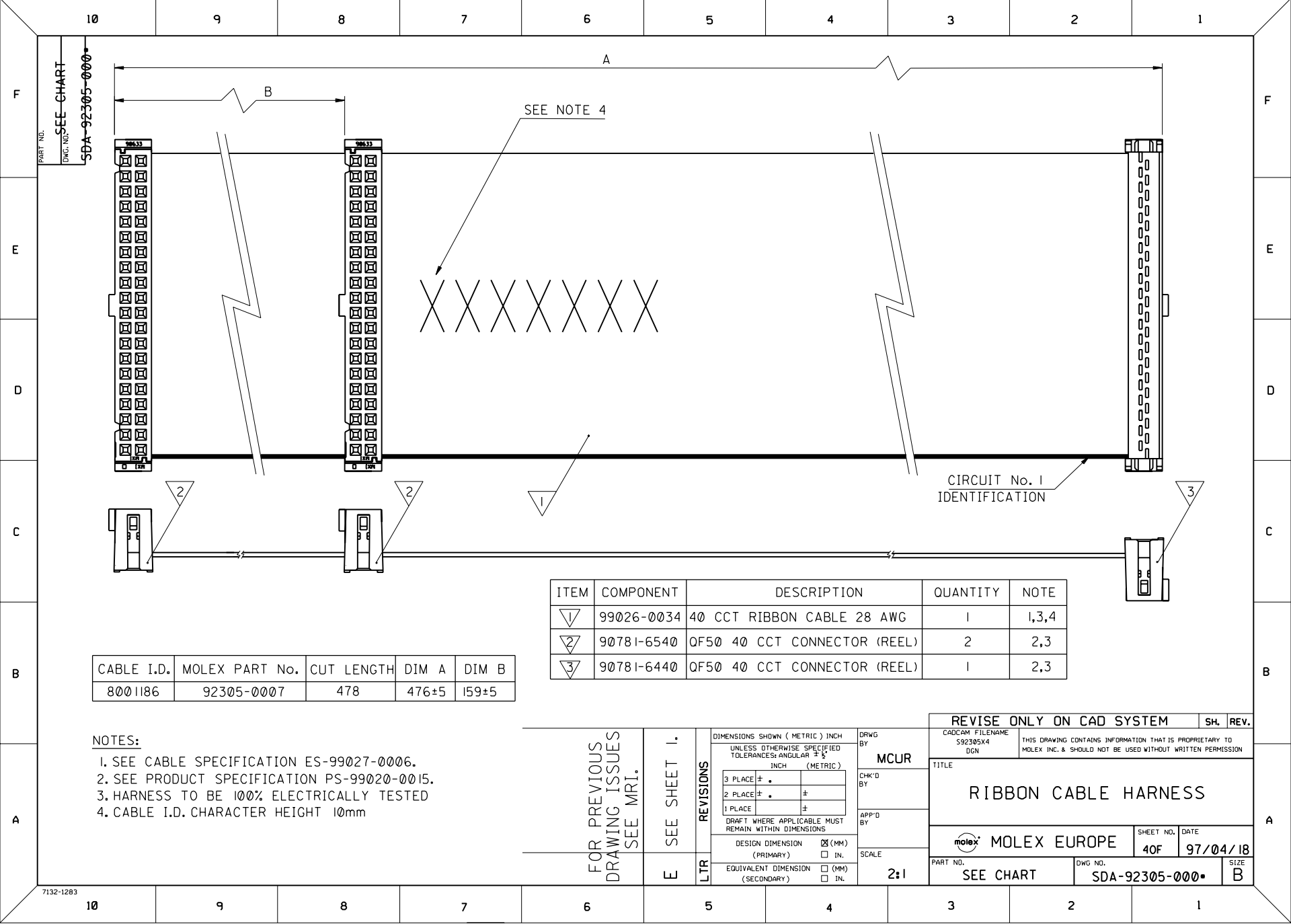
DESIGN DIMENSION  (MM) (PRIMARY)  IN.

EQUIVALENT DIMENSION  (MM) (SECONDARY)  IN.

DRWG BY: MOR  
CHK'D BY:  
APP'D BY:  
SCALE: 2:1

**REVISE ONLY ON CAD SYSTEM**

CAD/CAM FILENAME S92305X1 DGN	THIS DRAWING CONTAINS INFORMATION THAT IS PROPRIETARY TO MOLEX INC. & SHOULD NOT BE USED WITHOUT WRITTEN PERMISSION
<b>TITLE</b> RIBBON CABLE HARNESS	
<b>MOLEX EUROPE</b>	
SHEET NO. DATE 10F5 96/12/18	
PART NO. SEE CHART	DWG NO. SDA-92305-000
SIZE B	



PART NO. SEE CHART  
 DWG. NO. SDA-92305-000

SEE NOTE 4

CIRCUIT No. 1 IDENTIFICATION

ITEM	COMPONENT	DESCRIPTION	QUANTITY	NOTE
▽	99026-0034	40 CCT RIBBON CABLE 28 AWG	1	1,3,4
▽	90781-6540	QF50 40 CCT CONNECTOR (REEL)	2	2,3
▽	90781-6440	QF50 40 CCT CONNECTOR (REEL)	1	2,3

CABLE I.D.	MOLEX PART No.	CUT LENGTH	DIM A	DIM B
8001186	92305-0007	478	476±5	159±5

NOTES:

1. SEE CABLE SPECIFICATION ES-99027-0006.
2. SEE PRODUCT SPECIFICATION PS-99020-0015.
3. HARNESS TO BE 100% ELECTRICALLY TESTED
4. CABLE I.D. CHARACTER HEIGHT 10mm

FOR PREVIOUS DRAWING ISSUES SEE MRI.

SEE SHEET I.

DIMENSIONS SHOWN ( METRIC ) INCH UNLESS OTHERWISE SPECIFIED TOLERANCES: ANGULAR ± 1/2°	INCH	( METRIC )
	3 PLACE ± .	
	2 PLACE ± .	
	1 PLACE ±	
DRAFT WHERE APPLICABLE MUST REMAIN WITHIN DIMENSIONS		
DESIGN DIMENSION (PRIMARY)	<input type="checkbox"/> IN.	<input checked="" type="checkbox"/> (MM)
EQUIVALENT DIMENSION (SECONDARY)	<input type="checkbox"/> IN.	<input type="checkbox"/> (MM)

DRWG BY: MCLR  
 CHK'D BY:  
 APP'D BY:  
 SCALE: 2:1

REVISE ONLY ON CAD SYSTEM		SHL. REV.
CAD/CAM FILENAME 592305X4 DGN	THIS DRAWING CONTAINS INFORMATION THAT IS PROPRIETARY TO MOLEX INC. & SHOULD NOT BE USED WITHOUT WRITTEN PERMISSION	
TITLE <b>RIBBON CABLE HARNESS</b>		
MOLEX EUROPE	SHEET NO. 40F	DATE 97/04/18
PART NO. SEE CHART	DWG. NO. SDA-92305-000	SIZE B